

Extrait No 3
223. Fach 9. Lage
No 211 c. part. cav.
Zelenna



L c. profusion

Motion de l'âme

Fiedl
1729
24. April

2.
1729

W. et Chor. Alleluia al. Saltem. *Deprofundis*

ten

ten

Coro

Coro

Coro

Coro

Coro

Coro

Coro

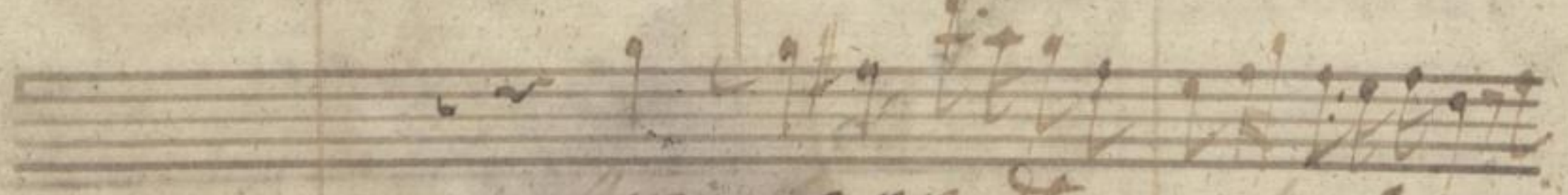
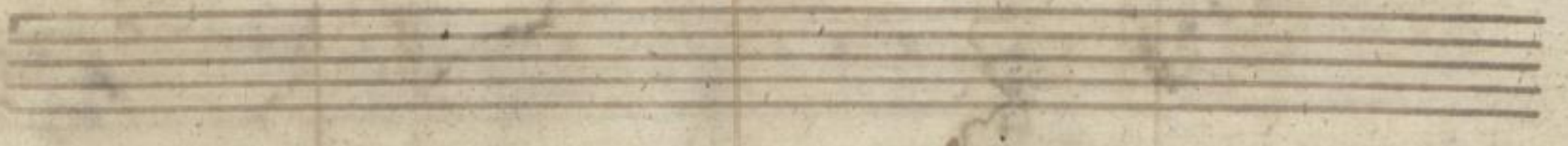
Coro

Coro

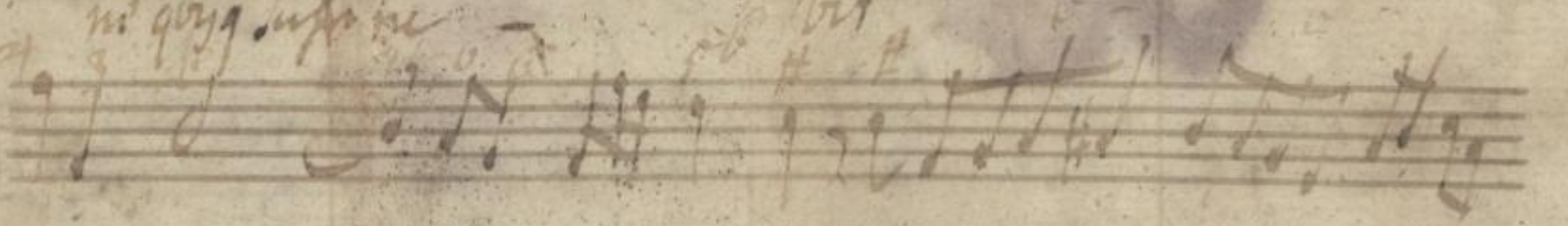
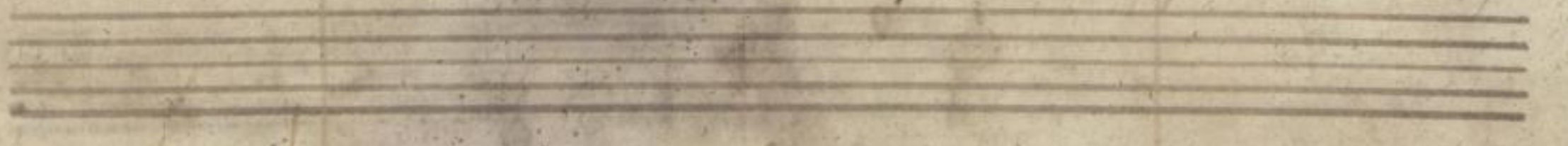
W. Kuhn

a. h.

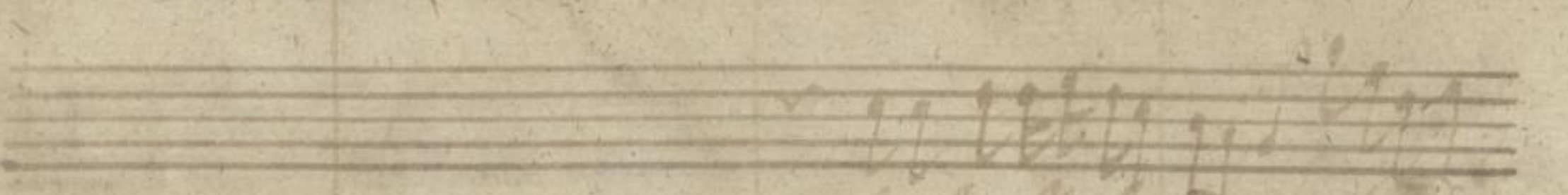
Handwritten musical score on aged paper, featuring multiple staves of music and lyrics. The notation includes various note values, rests, and clefs. The lyrics are written in a cursive hand, with some words appearing to be "me a", "Si in quibus", "supra", "animu", and "olla in". The paper shows signs of age, including staining and discoloration.



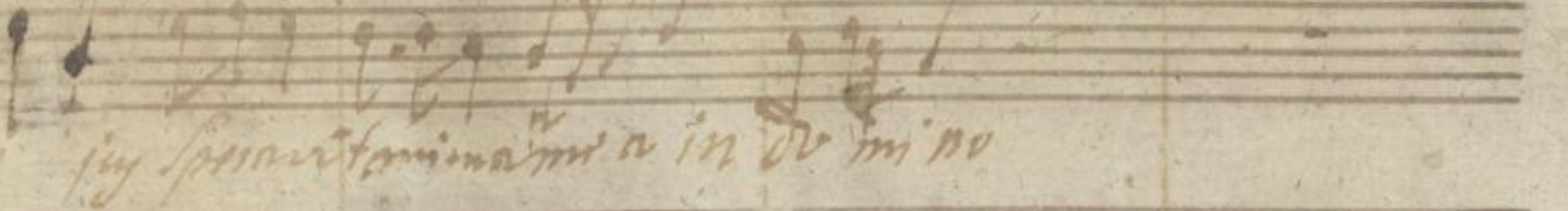
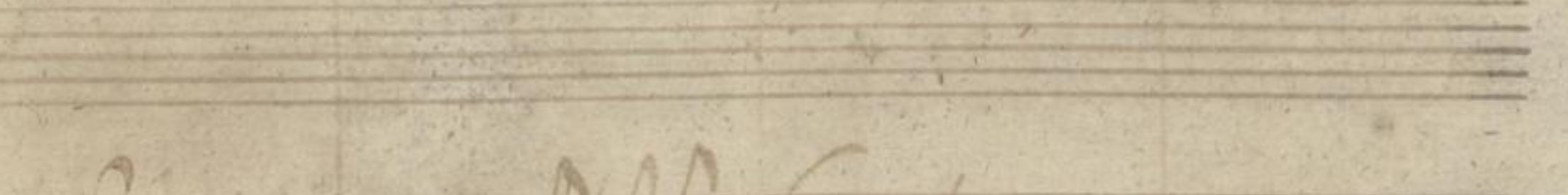
Quis a seipso seipsum seipsum seipsum



ni quia seipsum seipsum seipsum



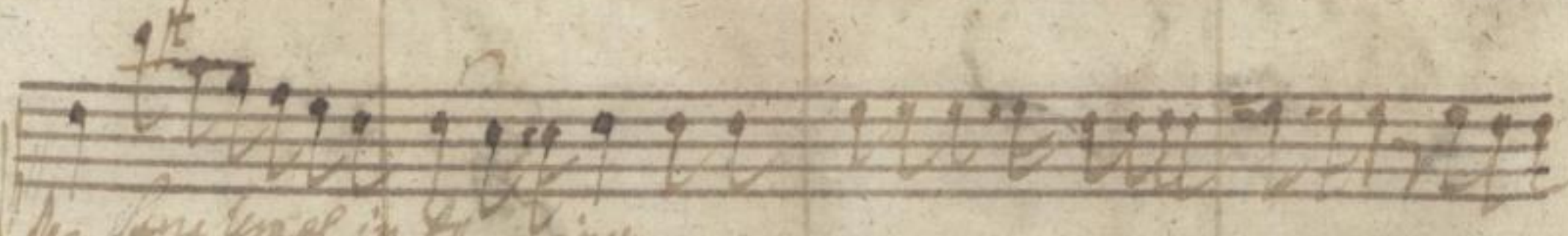
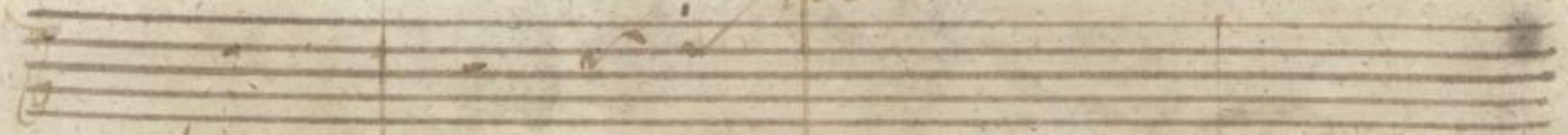
seipsum seipsum seipsum seipsum



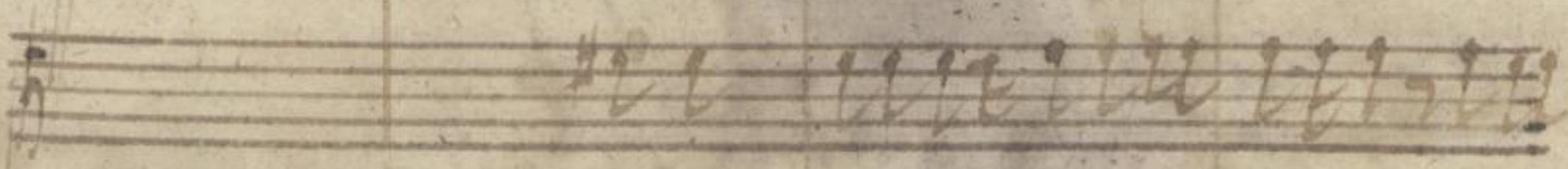
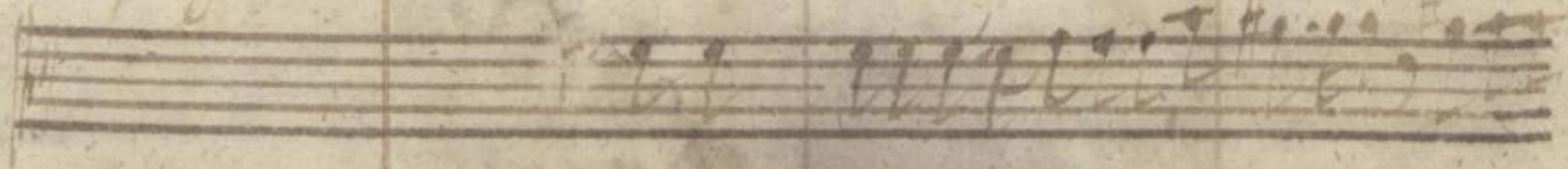
seipsum seipsum seipsum seipsum



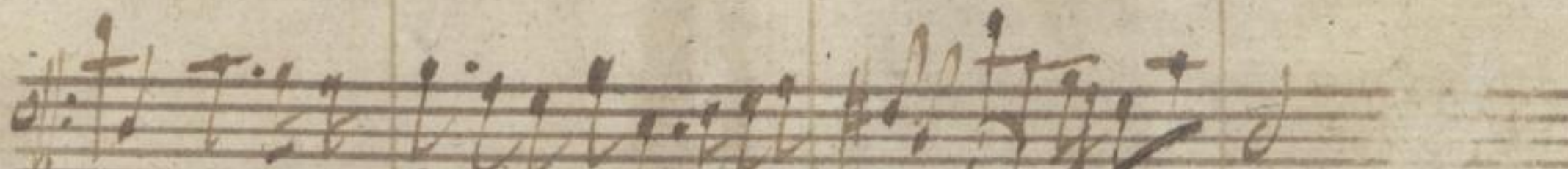
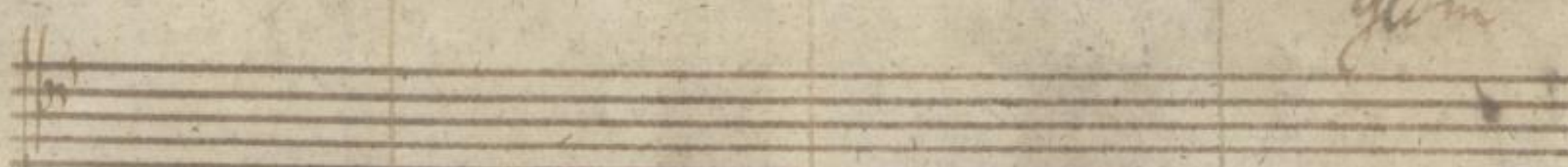
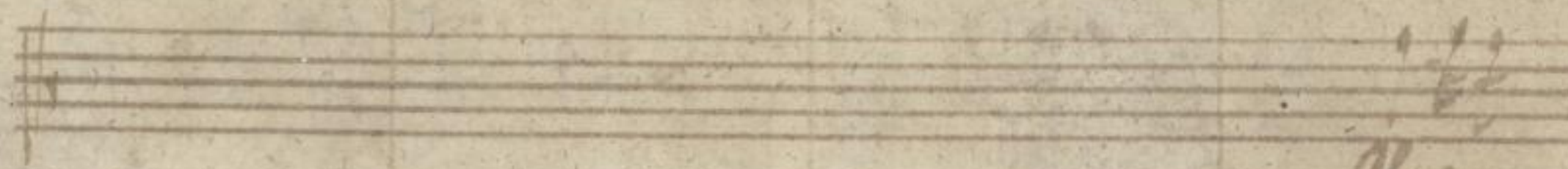
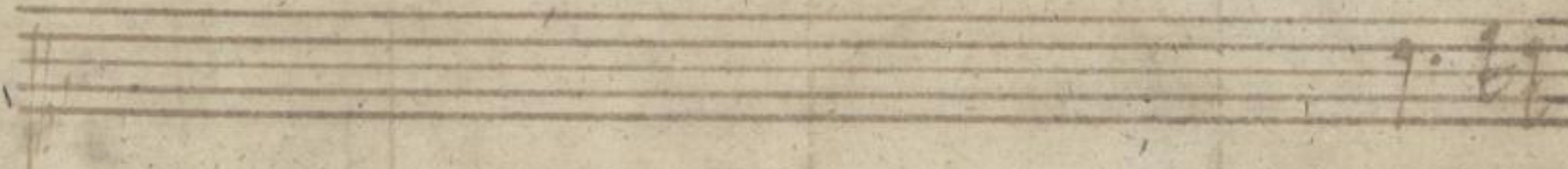
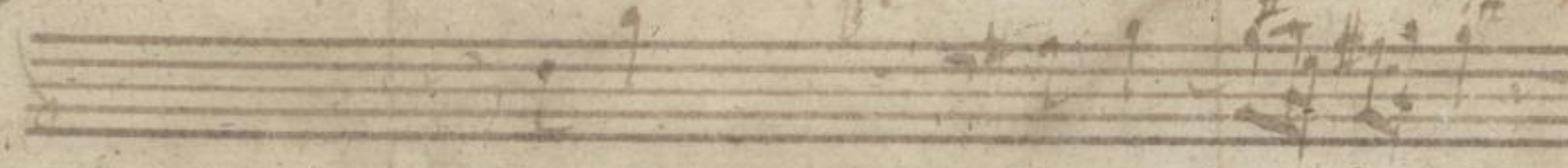
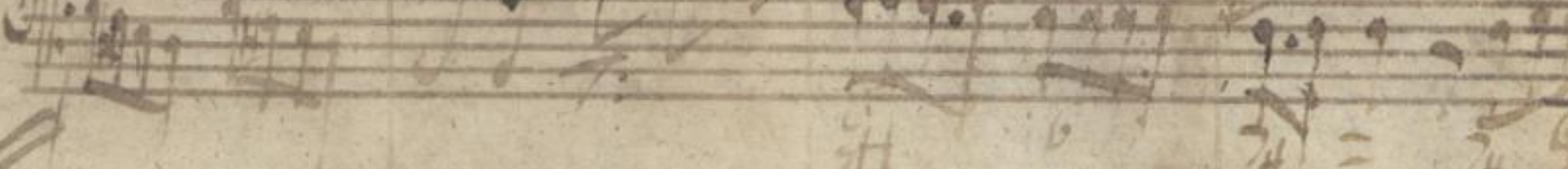
colle viri al. litta



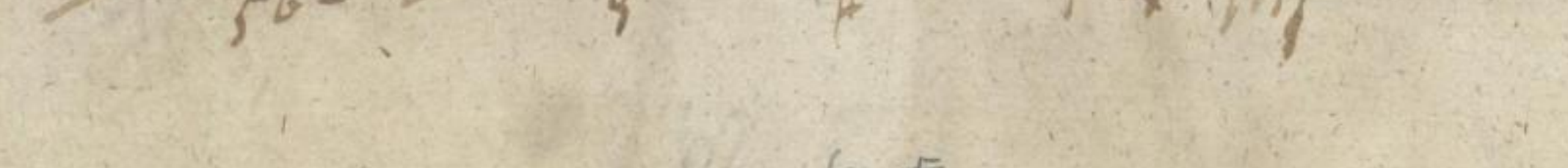
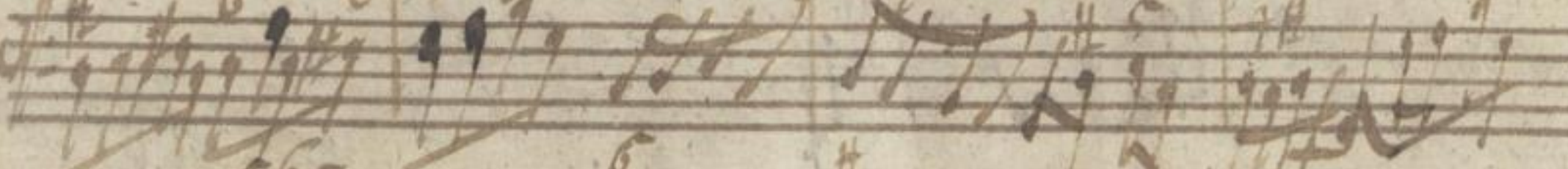
per spem semel in se regnu



super terram super maria super

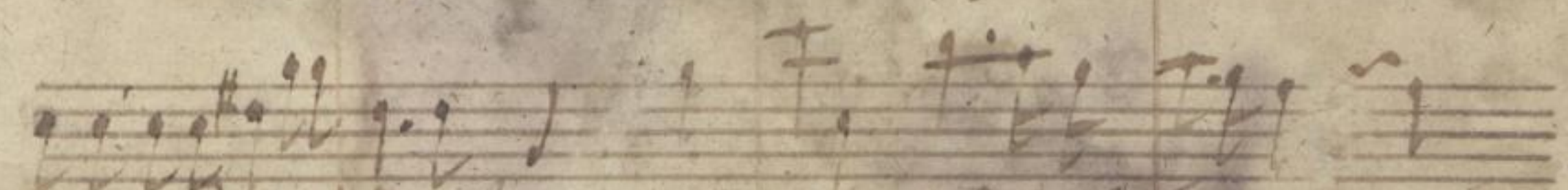
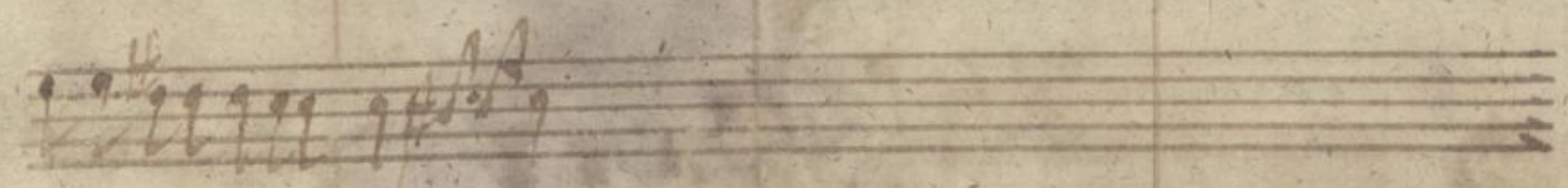
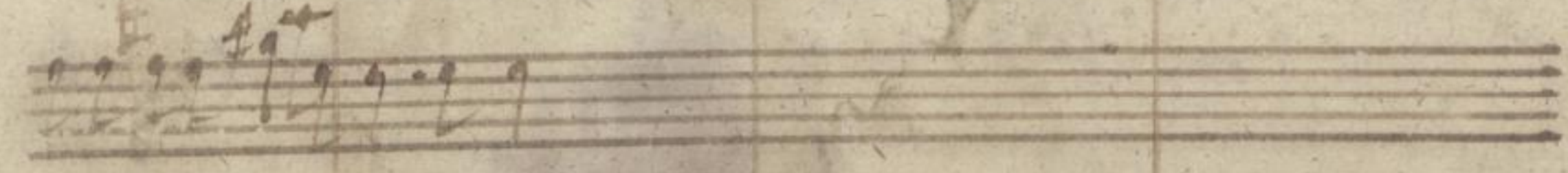
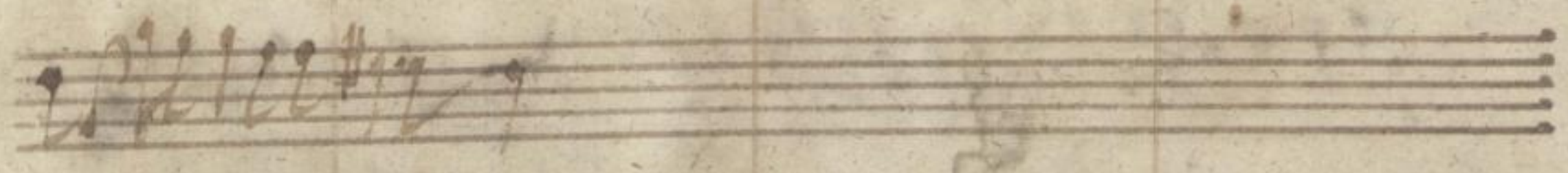
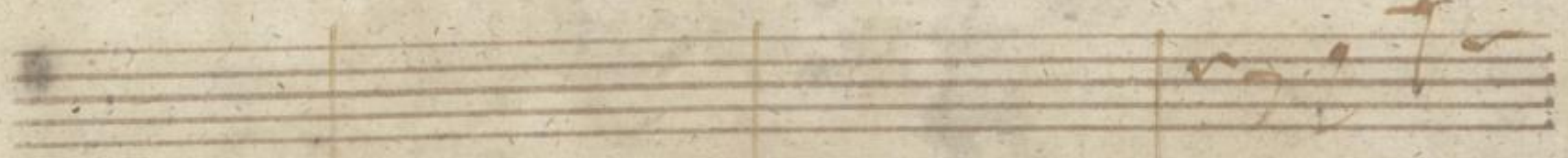


ipse regnat sem et saeculorum in regna

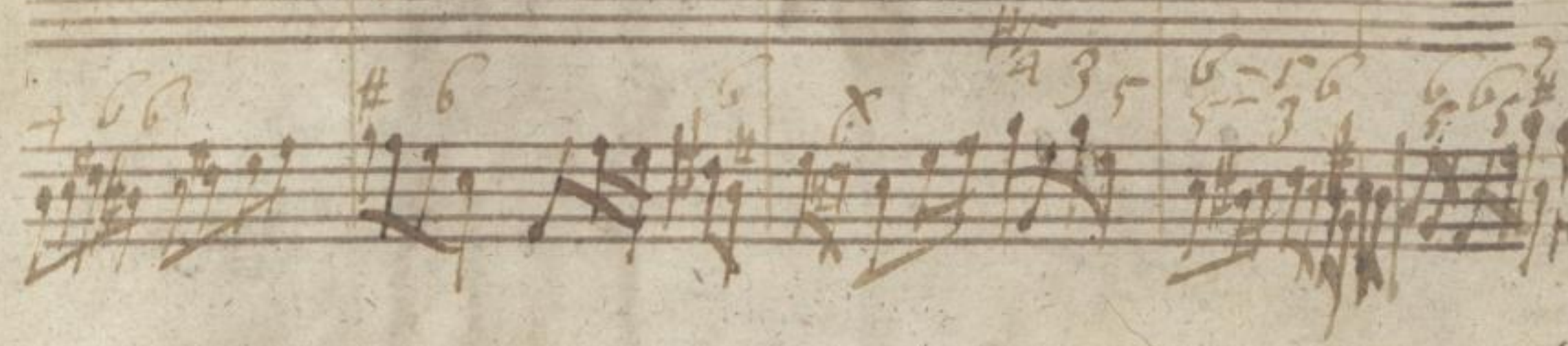
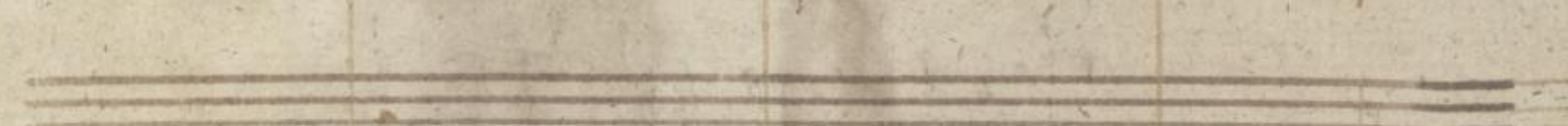
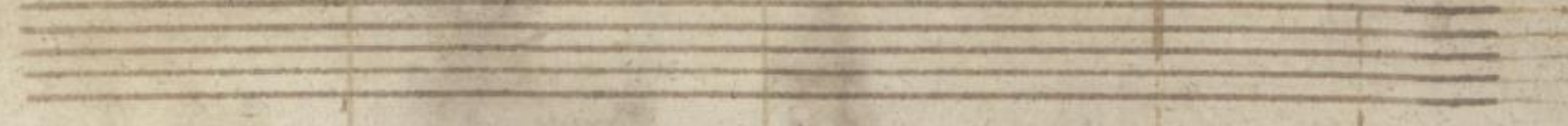
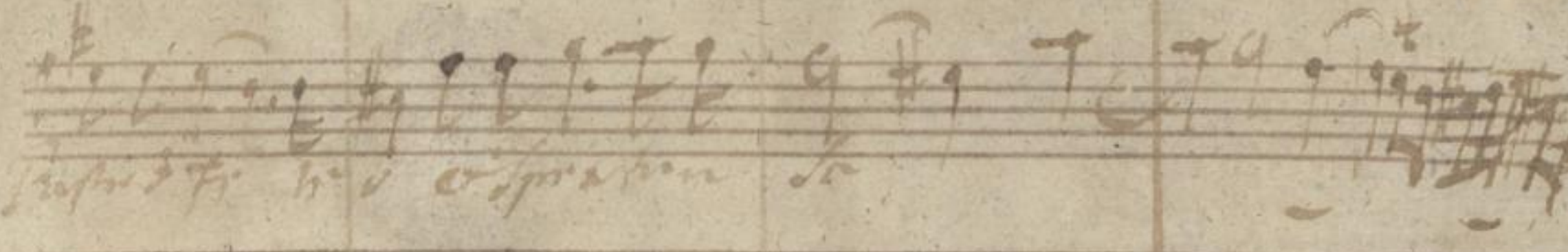
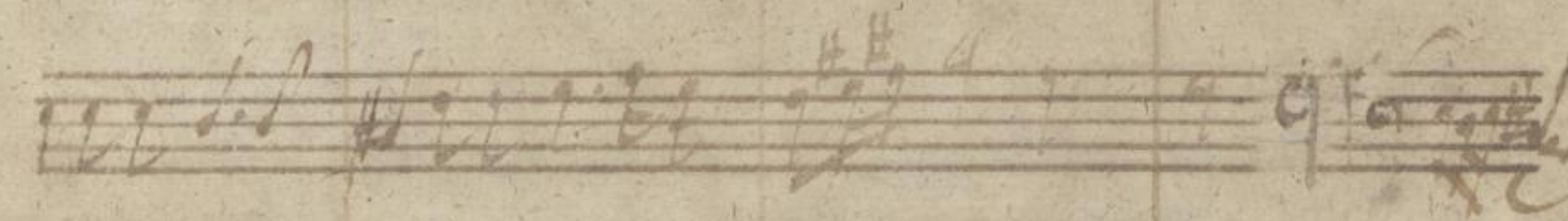
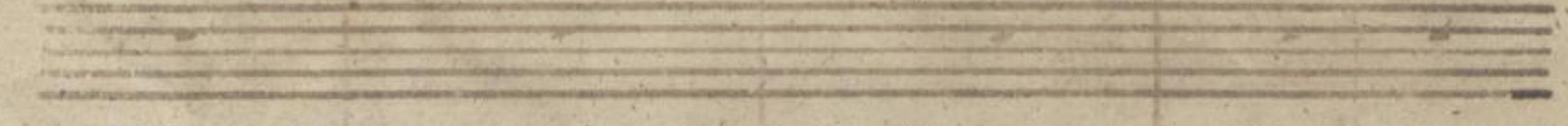


6 4

No.



Handwritten text in a cursive script, likely a vocal line or lyrics.



Handwritten musical score on aged paper. The score consists of several staves of music. The notation is in brown ink and includes various note values, rests, and clefs. There are some lyrics written in a cursive hand below the staves, including the words "in dem Jahr" and "diesem". The paper shows signs of age, including discoloration and a large water stain in the lower half.

In dem Jahr: 1724. No. 10. 1724

Am 24. Jun 1724.

Handwritten musical score on aged paper, consisting of five systems of staves. The notation includes various notes, rests, and clefs. The first system has a treble clef and a common time signature. The second system has a treble clef and a common time signature. The third system has a treble clef and a common time signature. The fourth system has a treble clef and a common time signature. The fifth system has a treble clef and a common time signature. The text "mit dem..." is written below the first system, and "mit dem..." is written below the fourth system.

Handwritten signature or name, possibly "A. Bach" or similar, written in a cursive style.



(Autogr. 233)

(Autogr. 233)

10
Df 68