

Ignus II.

Ignus Dei

a 4.

C. A. B.

Witz über 2 Nöcher

Passo Contin.

Druck li 2 y Mem.

1725.

di.
Gron: Dym
Celenka.



11

Agnus Dei a 9. d. G. F. E.

Oboe Solo

Musical notation for Oboe Solo and two string parts. The Oboe part is in treble clef with a key signature of one sharp (F#) and a 3/4 time signature. It features a melodic line with slurs and accents. The two string parts are in bass clef, with the first part in F major and the second in F minor. They provide harmonic support with rhythmic patterns.

Musical notation for Viola. The part is in bass clef with a key signature of one sharp (F#) and a 3/4 time signature. It consists of a rhythmic accompaniment of eighth and sixteenth notes.

Musical notation for Violin I, Violin II, and Cello/Double Bass. The Violin I part is in treble clef with a key signature of one sharp (F#) and a 3/4 time signature. The Violin II part is in treble clef with a key signature of one sharp (F#) and a 3/4 time signature. The Cello/Double Bass part is in bass clef with a key signature of one sharp (F#) and a 3/4 time signature. The lyrics "a gnus Dei qui tollis" are written below the Cello/Double Bass staff.

Handwritten musical score for five staves. The notation includes treble clefs, a key signature of one sharp (F#), and various rhythmic values such as eighth and sixteenth notes. The music is dense and appears to be a vocal or instrumental piece.

Tutti *Voce col Soprano* *Chiole col Alto & Ten.*

Handwritten musical score for five staves with Latin lyrics. The lyrics are: "Agnus Dei qui tollis peccata mundi - ta peccata mundi". The notation includes treble clefs, a key signature of one sharp (F#), and various rhythmic values. The lyrics are written below the notes.

A handwritten musical score on aged, yellowed paper. The score consists of approximately 12 staves of music, arranged in two systems of six staves each. The notation is dense and includes various rhythmic values, accidentals, and dynamic markings. The first system begins with a treble clef and a key signature of one sharp (F#). The notation includes notes, rests, and beams. A dynamic marking "Dma" is visible in the fourth staff of the first system. The second system continues the piece with similar notation. The paper shows signs of age, including some staining and discoloration.

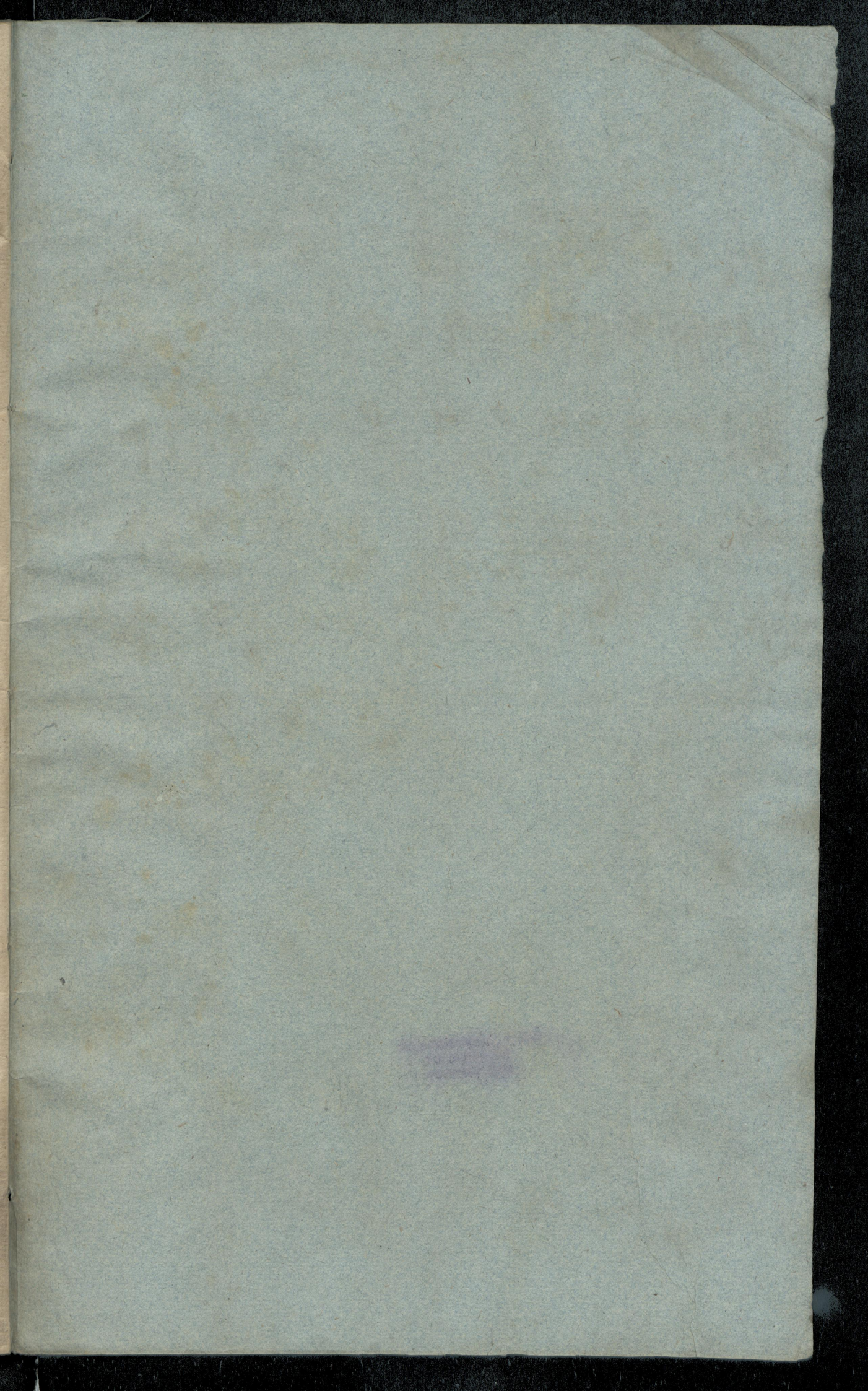
Handwritten musical notation on a five-line staff. The notation includes various notes, rests, and accidentals (sharps and flats). The first measure shows a treble clef and a key signature of one sharp (F#). The notation is dense and appears to be a single melodic line.

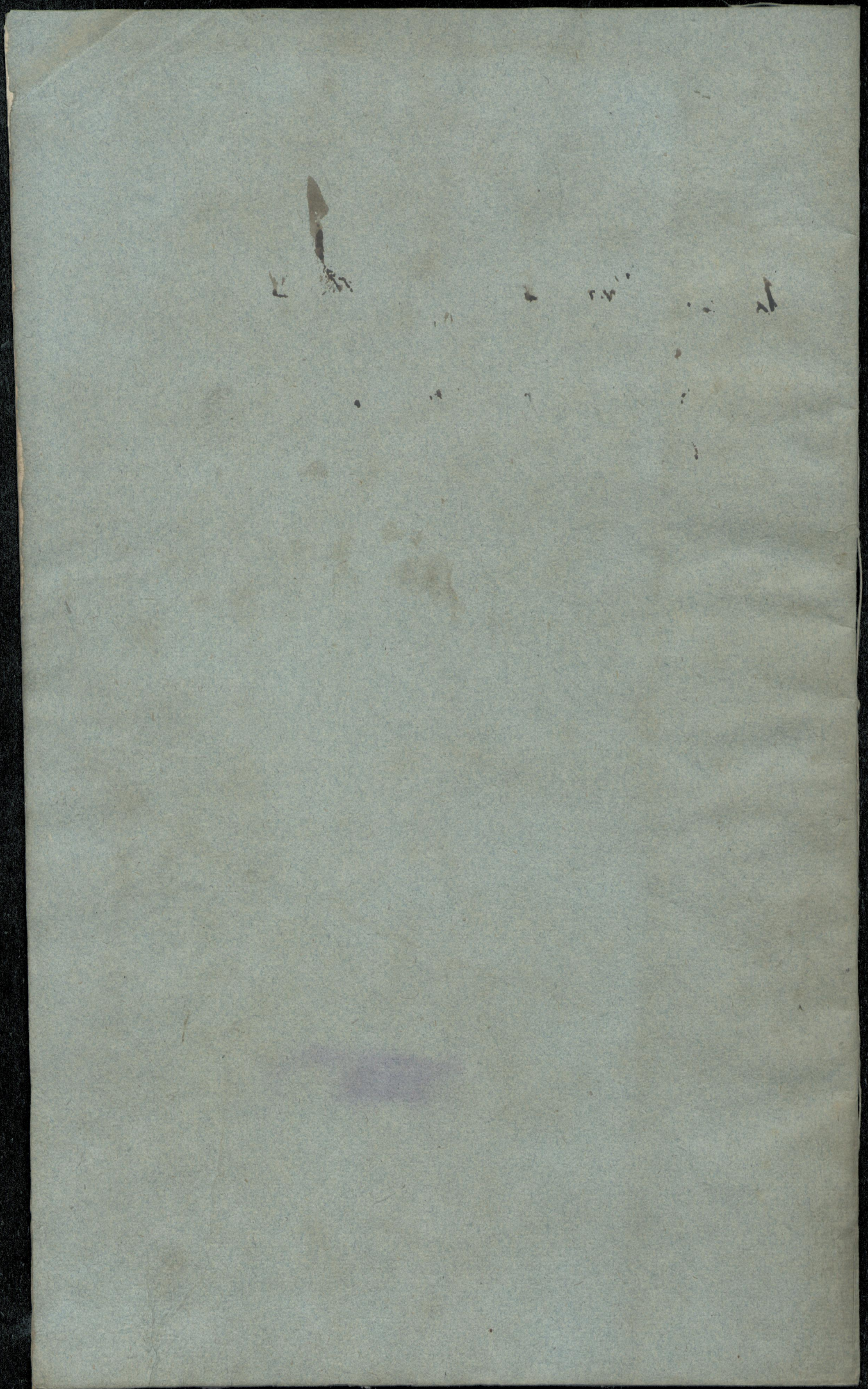
Handwritten musical notation on a five-line staff, continuing from the first system. It features a treble clef and a key signature of one sharp (F#). The notation includes notes, rests, and accidentals, with some notes beamed together. The system concludes with a double bar line and a fermata-like symbol.

Handwritten musical score on aged paper, featuring ten staves of music. The notation includes various rhythmic values, clefs, and accidentals. The lyrics "am dona nobis" and "in semidona nobis pa" are written below the staves.

am dona nobis

in semidona nobis pa





N^m

II:

Agnus Dei
à 4.

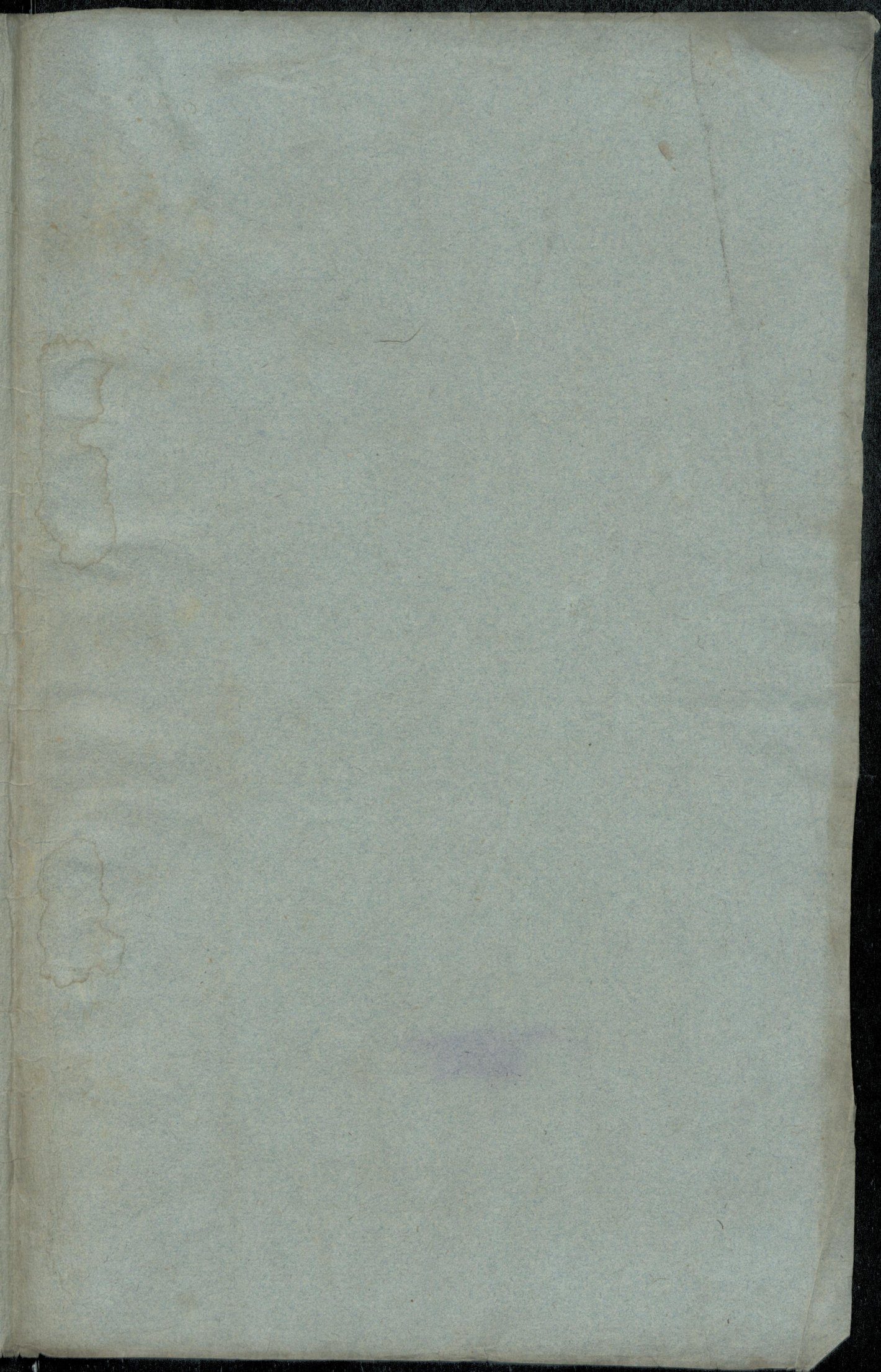
C: A: T: B:

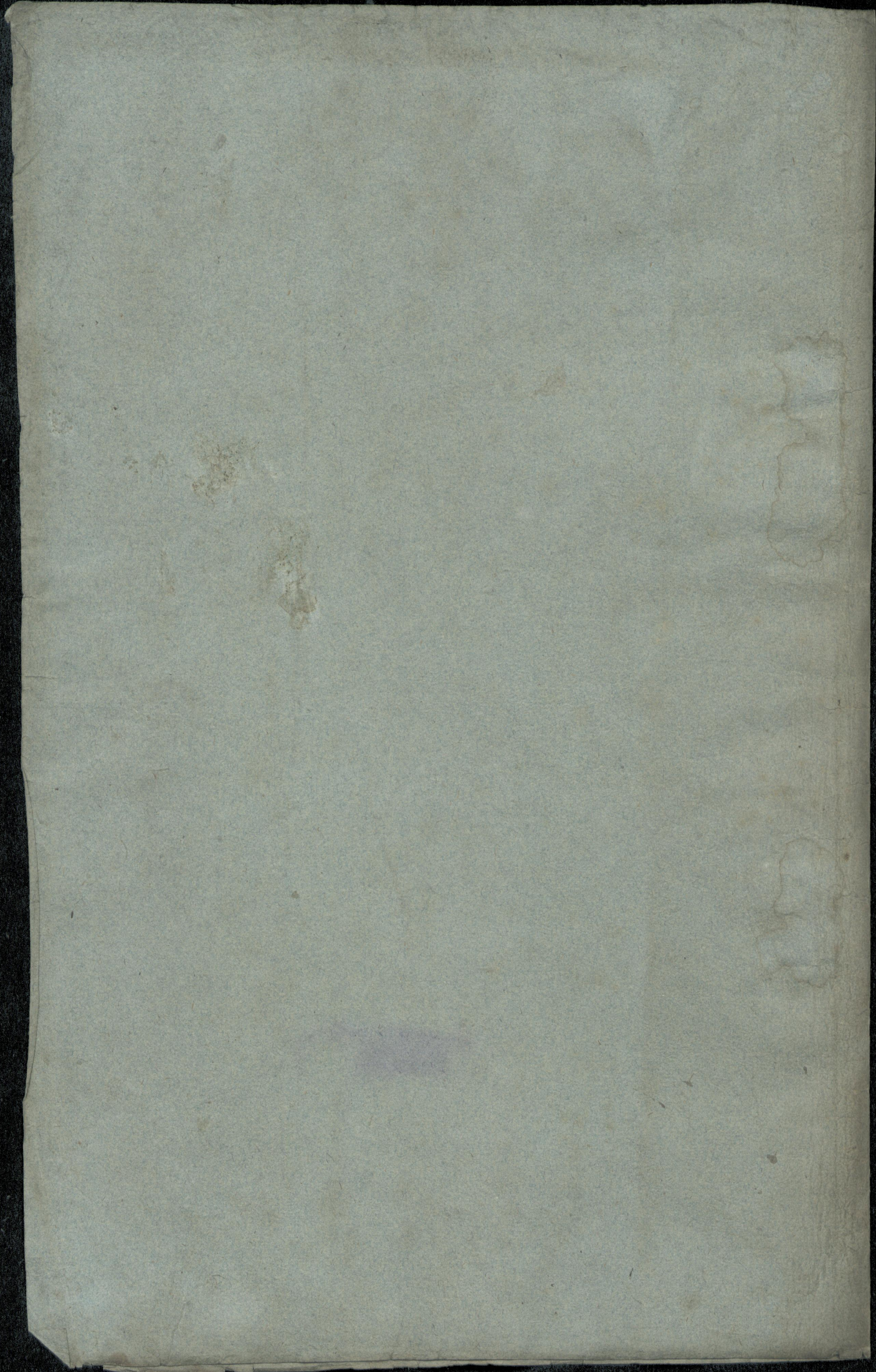
Vcl. 2. Oboe 2 con: Viol. 2
e

Basso continuo.

di Gio: Vigna
Celinda.







Lit: Schranck N^o. III
13. Facl. 9. Lage

No. 10. 1777

à 4. voc.

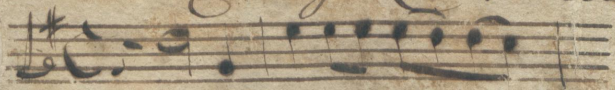
2^{te} Violini, Oboi, Viola ed. Org.

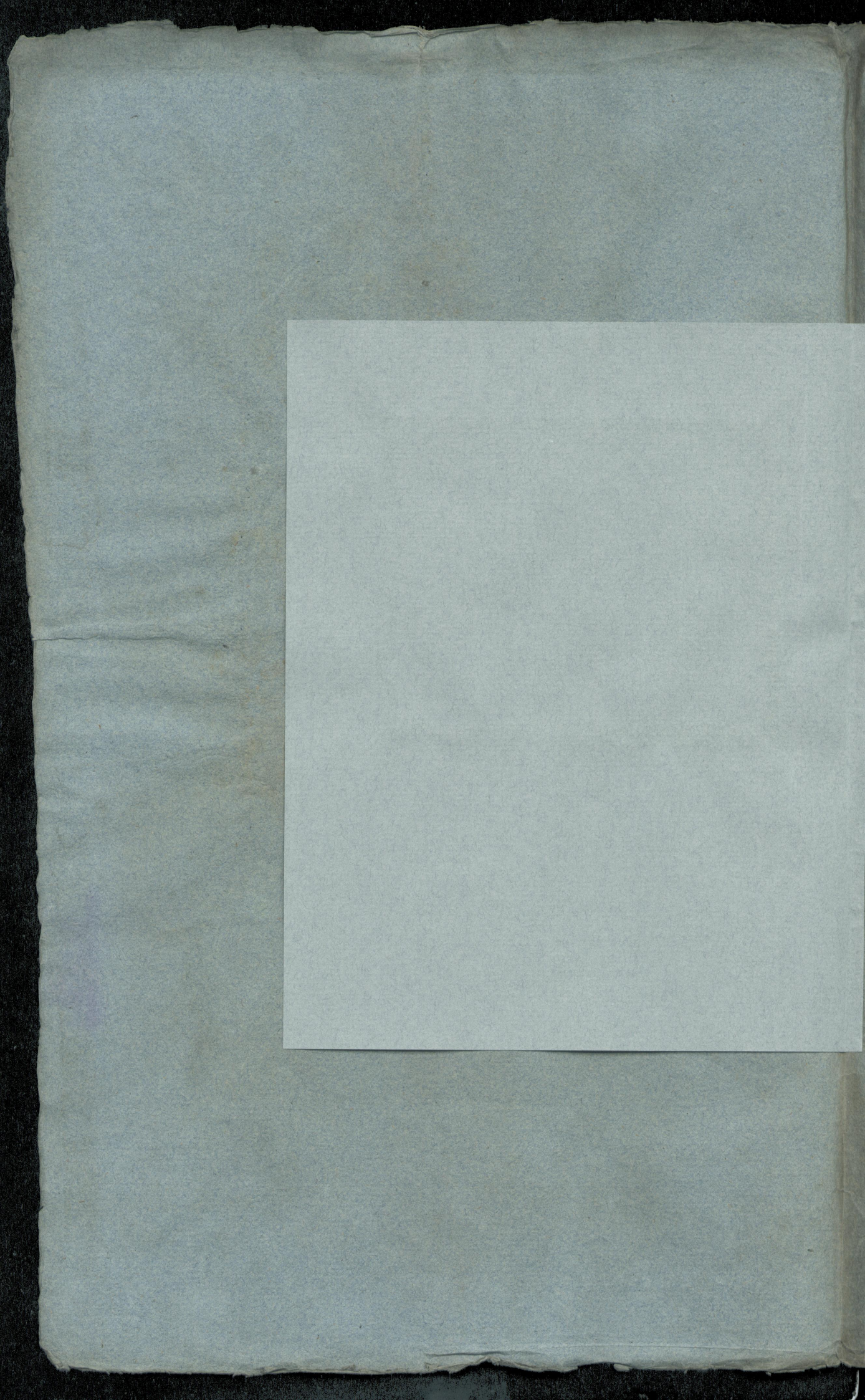
Partitura e parti

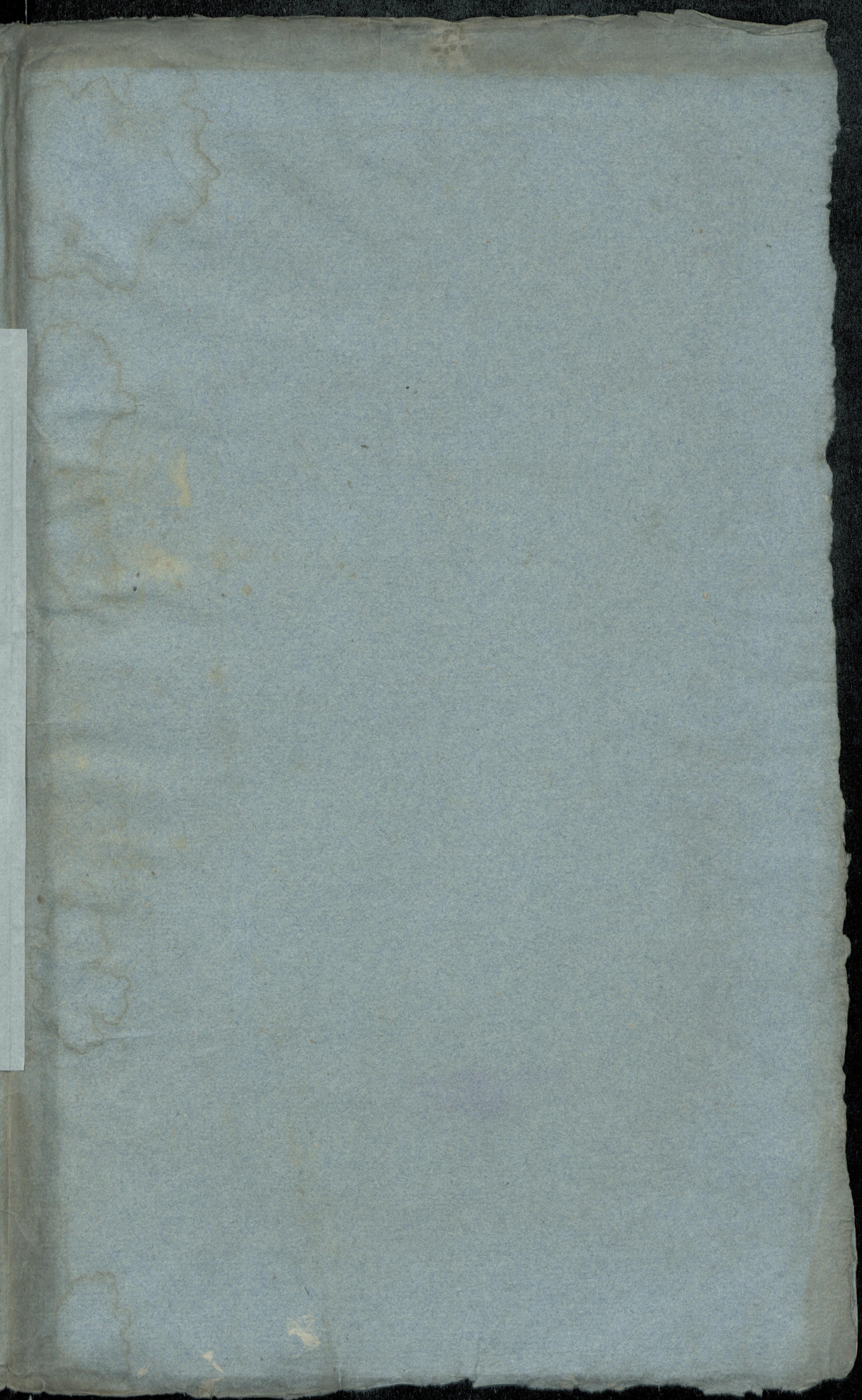
del Sign. Zelenka

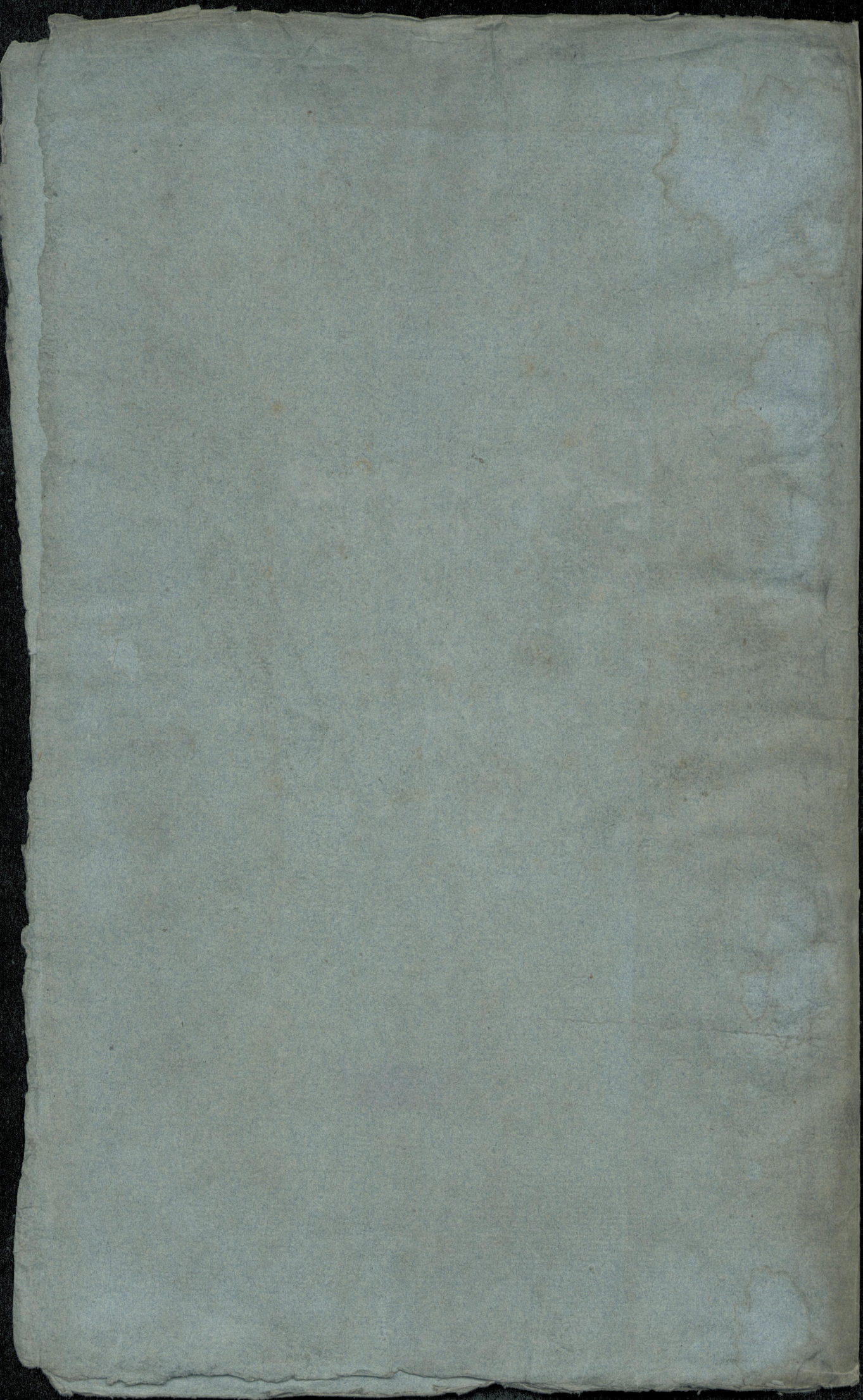


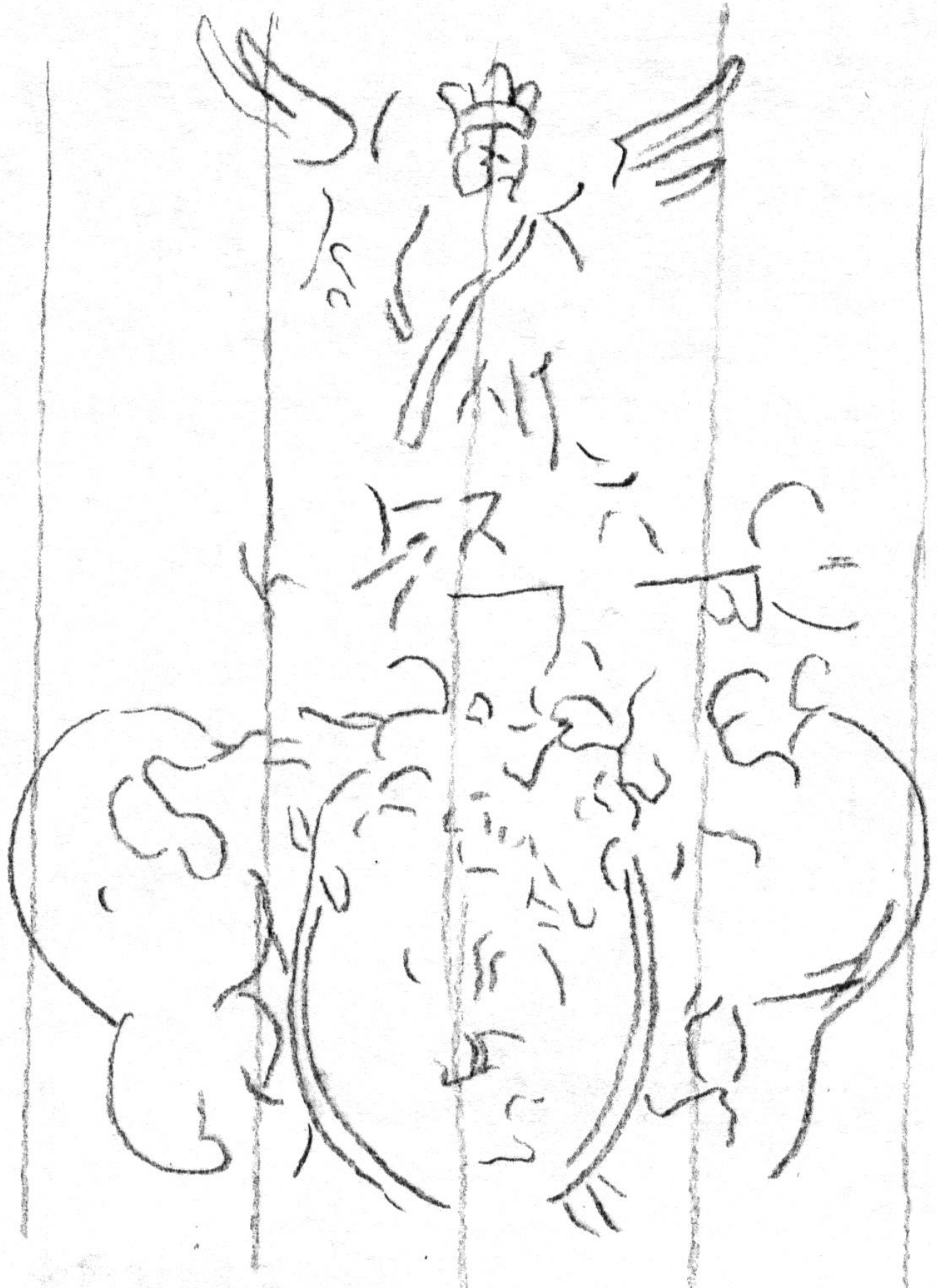
Schranck N^o. III.
Z. 17. Fach 14. Lage
N^o. 36. | Agnus Dei
à 4. voix
co' Vni. Viola. Basso
e Oboe concertato
Partitura e parti cav.
del Sig^{ro} Zelenka











D-DI Mus. 2358-D-16

p. 1/2

0 1 2 3 4 5 6 7 8 9 10

D-DE MUS. 2358-D-16

p. 12

