

Handwritten musical notation on a five-line staff, featuring various note values and rests.

Handwritten musical notation on a five-line staff, featuring various note values and rests.

Handwritten musical notation on a five-line staff, featuring various note values and rests.

Handwritten musical notation on a five-line staff, featuring various note values and rests.

Handwritten musical notation on a five-line staff, featuring various note values and rests.

Handwritten musical notation on a five-line staff, featuring various note values and rests.

Handwritten musical notation on a five-line staff, featuring various note values and rests.

Handwritten musical notation on a five-line staff, featuring various note values and rests.

Vostro Principi Divino portas aereas Celi estol

Handwritten musical notation on a five-line staff, featuring various note values and rests.



Musical notation on a single staff, featuring a treble clef and a series of notes with stems, including a sharp sign (#) above the staff.

Musical notation on a single staff, featuring a treble clef and a series of notes with stems.

Musical notation on a single staff, featuring a bass clef and a series of notes with stems.

Musical notation on a single staff, featuring a treble clef and a series of notes with stems. Includes the handwritten text: *lita extol = lita*

Musical notation on a single staff, featuring a bass clef and a series of notes with stems.

Musical notation on a single staff, featuring a treble clef and a series of notes with stems.

Musical notation on a single staff, featuring a treble clef and a series of notes with stems.

Musical notation on a single staff, featuring a bass clef and a series of notes with stems.

Musical notation on a single staff, featuring a treble clef and a series of notes with stems. Includes the handwritten text: *vestro Principi dmi = no potes aueray Celi extollite*

Musical notation on a single staff, featuring a bass clef and a series of notes with stems. Includes the handwritten text: *dmi = no uestro Principi d =*



uino uosko Principi extolli=te por = = = tas extollite por =

= = = = = tas extol = lite



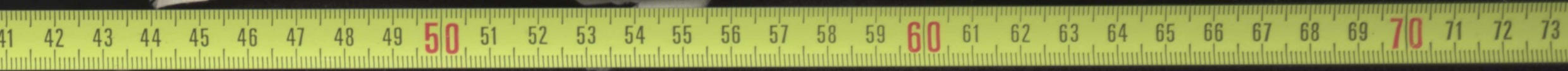
Handwritten musical score on aged paper, featuring ten staves of music. The notation includes various rhythmic values, beams, and some dense clusters of notes. The bottom two staves contain Latin text: "Genitrici et uno, et Trino nosse laudis gloria extol".

Genitrici et uno, et Trino nosse laudis gloria extol

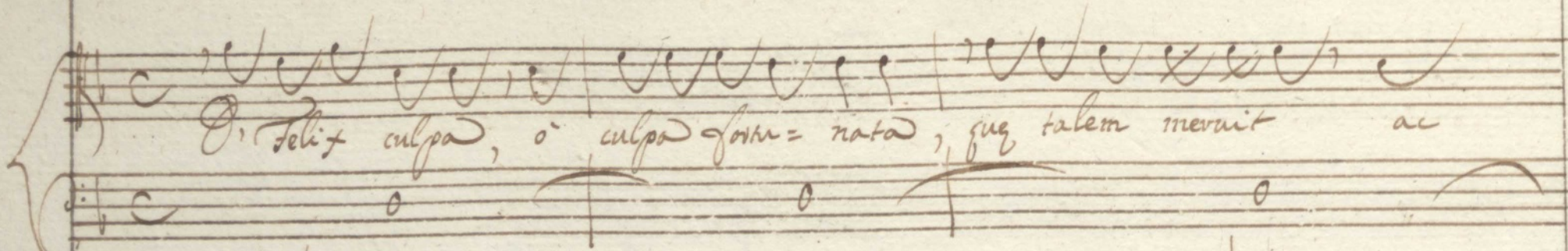
Handwritten musical score for the first system. It consists of five staves. The top two staves are for piano accompaniment, showing dense chordal textures. The third staff is the vocal line, with lyrics written below it: "lito extol = lito". The fourth and fifth staves are for a lower vocal part or bass line, with lyrics "Uno Trino lita extol = =".

J.C.

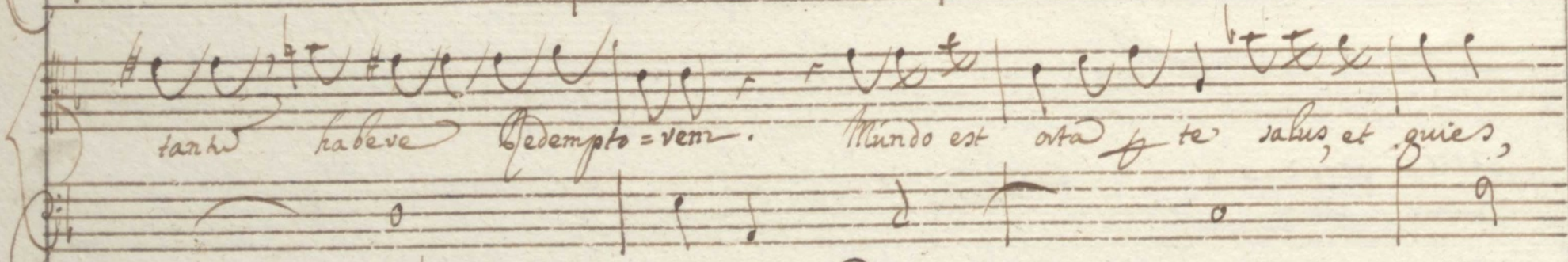
Handwritten musical score for the second system. It consists of three staves. The top staff is the vocal line, with lyrics "lita = = ex = = tollite". The bottom two staves are for piano accompaniment.



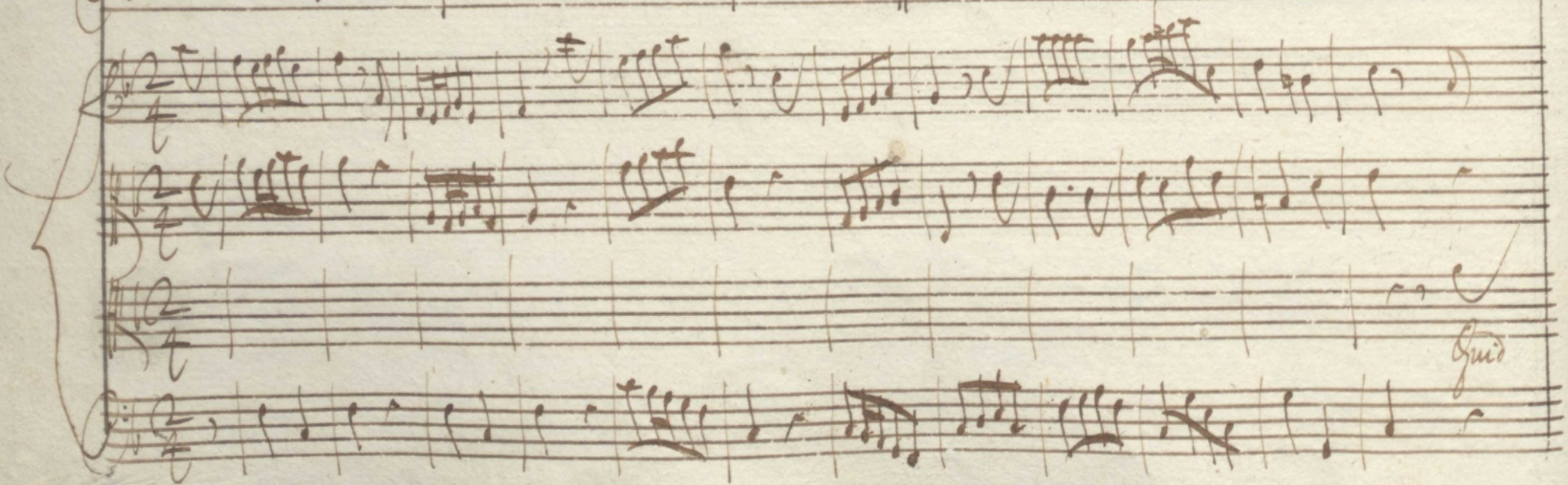
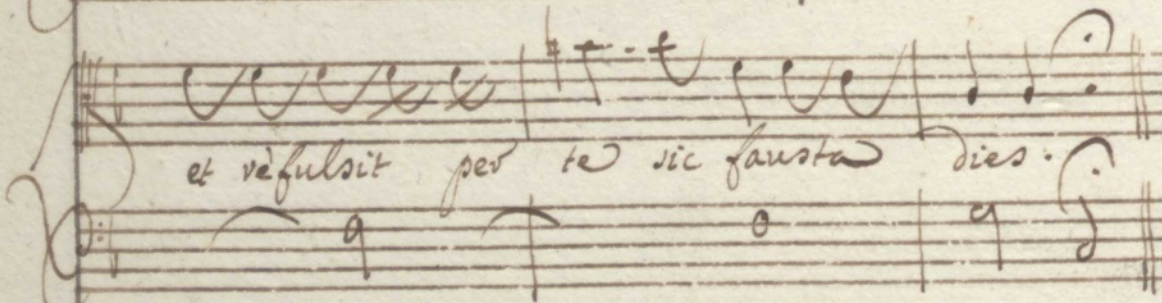
O felix culpa, o culpa formata, que talem meruit ac



tanti habere redemptorem. Mundo est orta pro te salus, et quies,



et refluxit per te sic fausta dies.



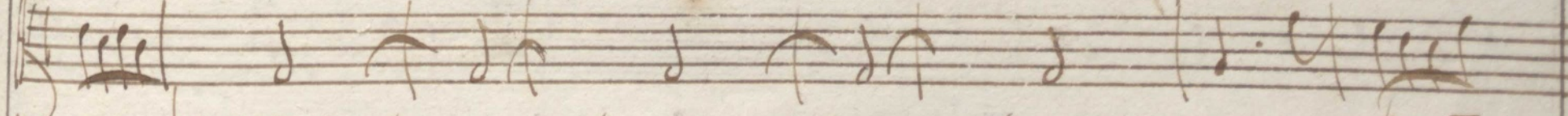
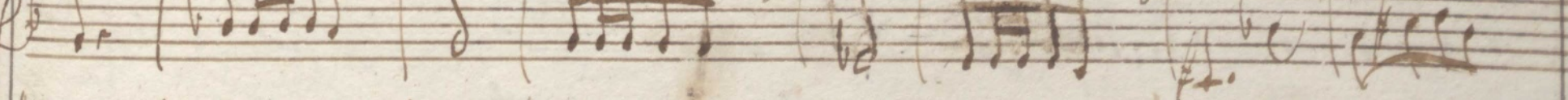
Quid



loqueris ad cor o' nouu cor in me. si gaudes in Na te de be-ne bene gesta ve o =



=tiosa non sit spes non non otiosa non sit spes sed curat cor et pes, sed curat cor et



pes ubi serena fax ubi tranquilla lux ubi serena pax regna = ve ve =



grave facit nos *Toto* = ves penę suaves et ameneq; delicia; filij dei
= ticia; cordis mei suaves ameneq; leticia; cordis mei non a = = no *des*
lando nos non a = = no lando nos

The image shows a page of handwritten musical notation on aged, yellowed paper. The notation is arranged in two systems of staves. The first system consists of five staves, and the second system consists of four staves. The music is written in a cursive, historical style. The lyrics are written in Latin and are interspersed between the staves. The paper shows signs of age, including some staining and wear at the edges. A ruler is visible at the bottom of the page, indicating the page's width and providing a scale for the notation.

Prata visete sicut florere et asper = se ges = mira =

= se lacte et melle o mol = ley herbe



Missa 1^{ta}

Grata uisete freg florere prata uisete freg = florere fla-

uete freg prata asperq gaminare o mol

Missa 2^a

ley o mollesq asperq gaminare

Handwritten musical score on aged paper, featuring ten staves of music. The notation includes various rhythmic values, clefs, and dynamic markings. The bottom two staves contain Latin lyrics.

to o molto forte

flores videte *collas gerentes*

scuto in beate cordis mei super aquas *deus super aquas*

Vertical handwritten musical notation on the right edge of the page, consisting of several staves with notes and clefs.



Handwritten musical notation on aged paper, consisting of several staves. The notation includes various notes, rests, and clefs. The first staff shows a treble clef and a key signature of one sharp (F#). The second staff contains a series of notes, some with accidentals. The third staff has some notes and rests, with the word "Cantata" written below it. The fourth staff has a treble clef and a key signature of one sharp, with the word "Cantata" written below it. The fifth staff has a treble clef and a key signature of one sharp, with the word "Cantata" written below it. The sixth staff has a treble clef and a key signature of one sharp, with the word "Cantata" written below it. The seventh staff has a treble clef and a key signature of one sharp, with the word "Cantata" written below it. The eighth staff has a treble clef and a key signature of one sharp, with the word "Cantata" written below it. The ninth staff has a treble clef and a key signature of one sharp, with the word "Cantata" written below it. The tenth staff has a treble clef and a key signature of one sharp, with the word "Cantata" written below it. The eleventh staff has a treble clef and a key signature of one sharp, with the word "Cantata" written below it. The twelfth staff has a treble clef and a key signature of one sharp, with the word "Cantata" written below it. The thirteenth staff has a treble clef and a key signature of one sharp, with the word "Cantata" written below it. The fourteenth staff has a treble clef and a key signature of one sharp, with the word "Cantata" written below it. The fifteenth staff has a treble clef and a key signature of one sharp, with the word "Cantata" written below it. The sixteenth staff has a treble clef and a key signature of one sharp, with the word "Cantata" written below it. The seventeenth staff has a treble clef and a key signature of one sharp, with the word "Cantata" written below it. The eighteenth staff has a treble clef and a key signature of one sharp, with the word "Cantata" written below it. The nineteenth staff has a treble clef and a key signature of one sharp, with the word "Cantata" written below it. The twentieth staff has a treble clef and a key signature of one sharp, with the word "Cantata" written below it.



Handwritten musical score for the first system, consisting of five staves. The notation includes various clefs (treble, alto, and bass), time signatures, and rhythmic markings. The music is written in a historical style with some complex rhythmic patterns.

Alleluia alleluia

at =

Handwritten musical score for the second system, consisting of five staves. The notation continues from the first system, showing similar rhythmic and melodic structures. The handwriting is consistent with the first system.

= = leluia

Alleluia alleluia



Handwritten musical score for the first system. It consists of three staves: treble clef (top), alto clef (middle), and bass clef (bottom). The music is written in brown ink on aged paper. The lyrics "Alleluia alleluia alleluia" are written below the middle staff. There are some corrections and scribbles in the music, particularly in the middle and right sections of the system.

Handwritten musical score for the second system. It consists of three staves: treble clef (top), alto clef (middle), and bass clef (bottom). The music is written in brown ink on aged paper. The lyrics "alleluia Alleluia" are written below the middle staff. There are some corrections and scribbles in the music, particularly in the middle and right sections of the system.



Handwritten musical score for the first system. It consists of three staves. The top staff is a vocal line with lyrics: "ia alleluia alleluia alleluia alleluia alle". The middle and bottom staves are accompaniment lines. The notation includes various rhythmic values and clefs.

Handwritten musical score for the second system. It consists of three staves. The top staff is a vocal line with lyrics: "luia alleluia alleluia". The middle and bottom staves are accompaniment lines. The notation includes various rhythmic values and clefs.

Vertical handwritten musical notation on the right edge of the page, consisting of several staves with notes and clefs.



Handwritten musical score for the first system, consisting of four staves. The notation includes various note values, rests, and dynamic markings. The first staff begins with a treble clef and a key signature of one sharp (F#). The second staff begins with a bass clef and a key signature of one sharp (F#). The third staff begins with a treble clef and a key signature of one sharp (F#). The fourth staff begins with a bass clef and a key signature of one sharp (F#). The music is written in a cursive, historical style. There are several instances of crossed-out notation, particularly in the first and third staves. Dynamic markings include *f* (forte) and *al* (all). The word *allegria* is written across the third and fourth staves. The system concludes with a double bar line and a key signature change to one sharp (F#).

Handwritten musical score for the second system, consisting of four staves. The notation is highly stylized and cursive, with large, sweeping flourishes. The first staff begins with a treble clef and a key signature of one sharp (F#). The second staff begins with a bass clef and a key signature of one sharp (F#). The third staff begins with a treble clef and a key signature of one sharp (F#). The fourth staff begins with a bass clef and a key signature of one sharp (F#). The system concludes with a double bar line and a key signature change to one sharp (F#).

Finis

