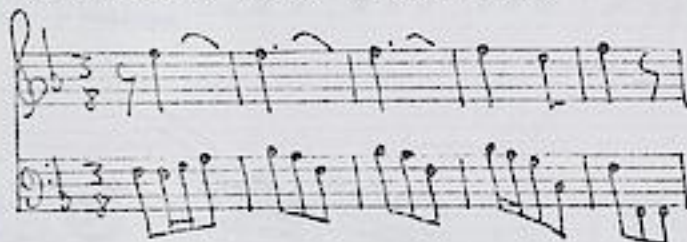


Telemann, Georg Philipp (1681-1767)

BRD DS Mus.ms 1042/11

Sonata a 3. Traverso, Viola di Gamba/e Continuo./del Sigr/  
Teleman./ (F-dur) [Kopftitel]



Dolce 3/8 F-dur - Alle-  
gro C F-dur - Largo 3/2  
d-moll - [ohne Satzbez.]  
3/4 (9/8) F-dur.

Ms. 1. H. 18. Jh. (Graupner). 34,5 x 21 cm.

partitur: 2 Bl.

Alte Sign.: Stempel: L mit Krone. 599. 3775/11.

Graener E34

TWV 42 F 5

1042 <sup>3775</sup> / *M. sgg* Sonata a 3. Traversa, Viola di Gamba del Signor <sup>1</sup> Telemann.  
*Coltino.*

Handwritten musical notation for the first system, consisting of three staves with treble, alto, and bass clefs.

Handwritten musical notation for the second system, consisting of three staves with treble, alto, and bass clefs.

Handwritten musical notation for the third system, consisting of three staves with treble, alto, and bass clefs.

*Allegro*

Handwritten musical notation for the fourth system, consisting of three staves with treble, alto, and bass clefs.

*Allegro.*

Handwritten musical notation for the fifth system, consisting of three staves with treble, alto, and bass clefs.

Handwritten musical notation for the sixth system, consisting of three staves with treble, alto, and bass clefs.

*fol (2)*

Großherzoglich  
Hessische  
Ratsbibliothek

Handwritten musical score on aged paper, consisting of six systems of three staves each. The notation is dense and includes various musical symbols such as clefs, notes, rests, and bar lines. The paper shows signs of age, including yellowing and some staining.

Largo.

Handwritten musical notation for the first system, featuring three staves with various notes and rests.

Handwritten musical notation for the second system, continuing the piece with three staves.

Handwritten musical notation for the third system, showing more complex rhythmic patterns.

Handwritten musical notation for the fourth system, characterized by dense, repetitive rhythmic figures.

Handwritten musical notation for the fifth system, with intricate rhythmic patterns across three staves.

Handwritten musical notation for the sixth system, concluding the page with three staves.

Handwritten musical notation on three staves. The top staff begins with a treble clef and a common time signature (C). The notation consists of rhythmic patterns and notes, typical of early manuscript notation.

Handwritten musical notation on three staves. The top staff begins with a treble clef and a common time signature (C). The notation continues with rhythmic patterns and notes.

Handwritten musical notation on three staves. The top staff begins with a treble clef and a common time signature (C). The notation continues with rhythmic patterns and notes.

Handwritten musical notation on three staves. The top staff begins with a treble clef and a common time signature (C). The notation continues with rhythmic patterns and notes.

Handwritten musical notation on three staves. The top staff begins with a treble clef and a common time signature (C). The notation continues with rhythmic patterns and notes. To the right of the notation is a large, stylized signature or initial.