

Schranck O. II.
25. Fach II. Lage.

cop. Oboe & Basso. 10. 18.
Del Sig. Telemann



Musica	
2392	
N	15



1

(URFN.M 62/1976 Nr. 1006)

Sächsische Landesbibliothek in Dresden

S 11/85 Nr. 202 = 33

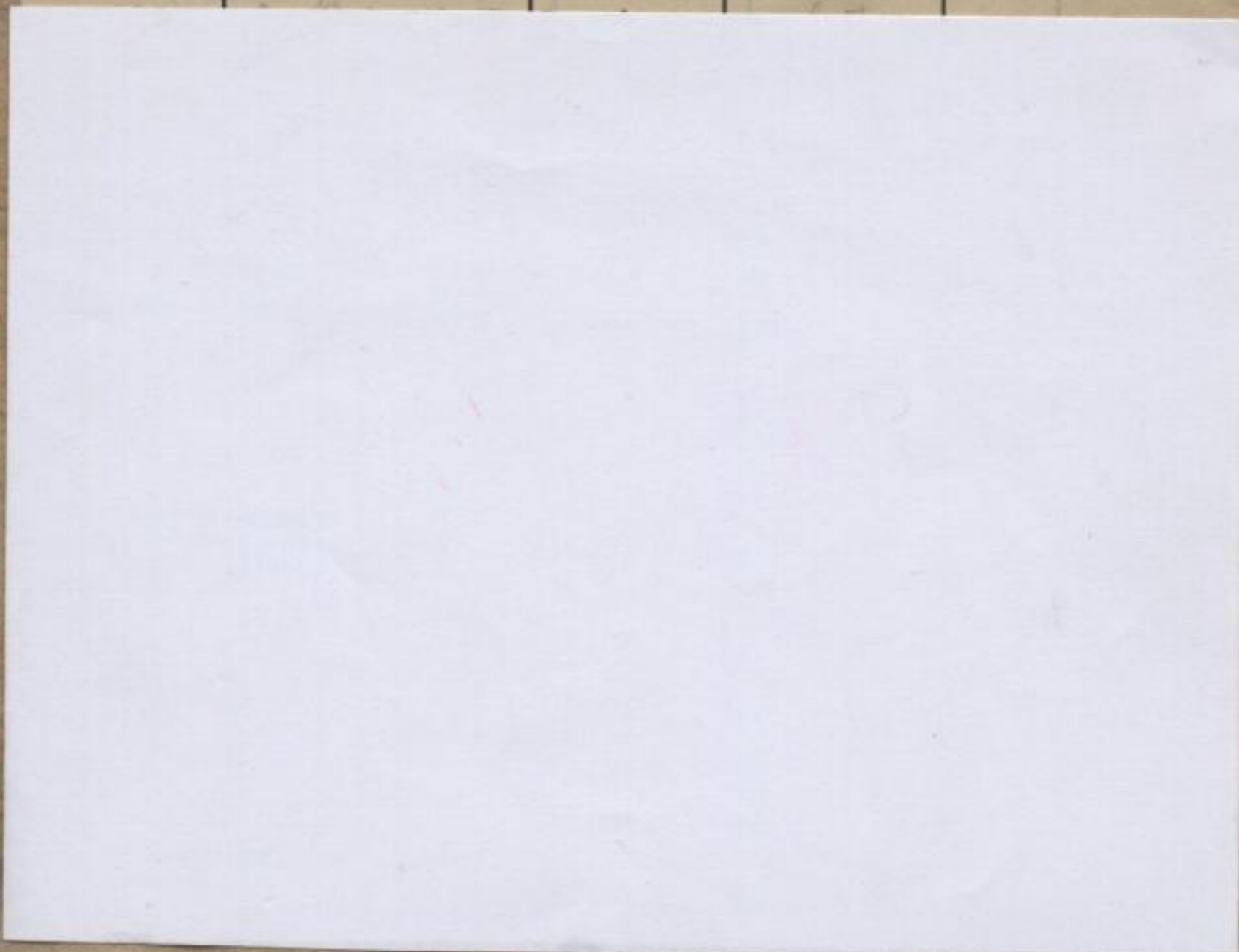
Handschrift Nr. *Mis.* 2392
n/15

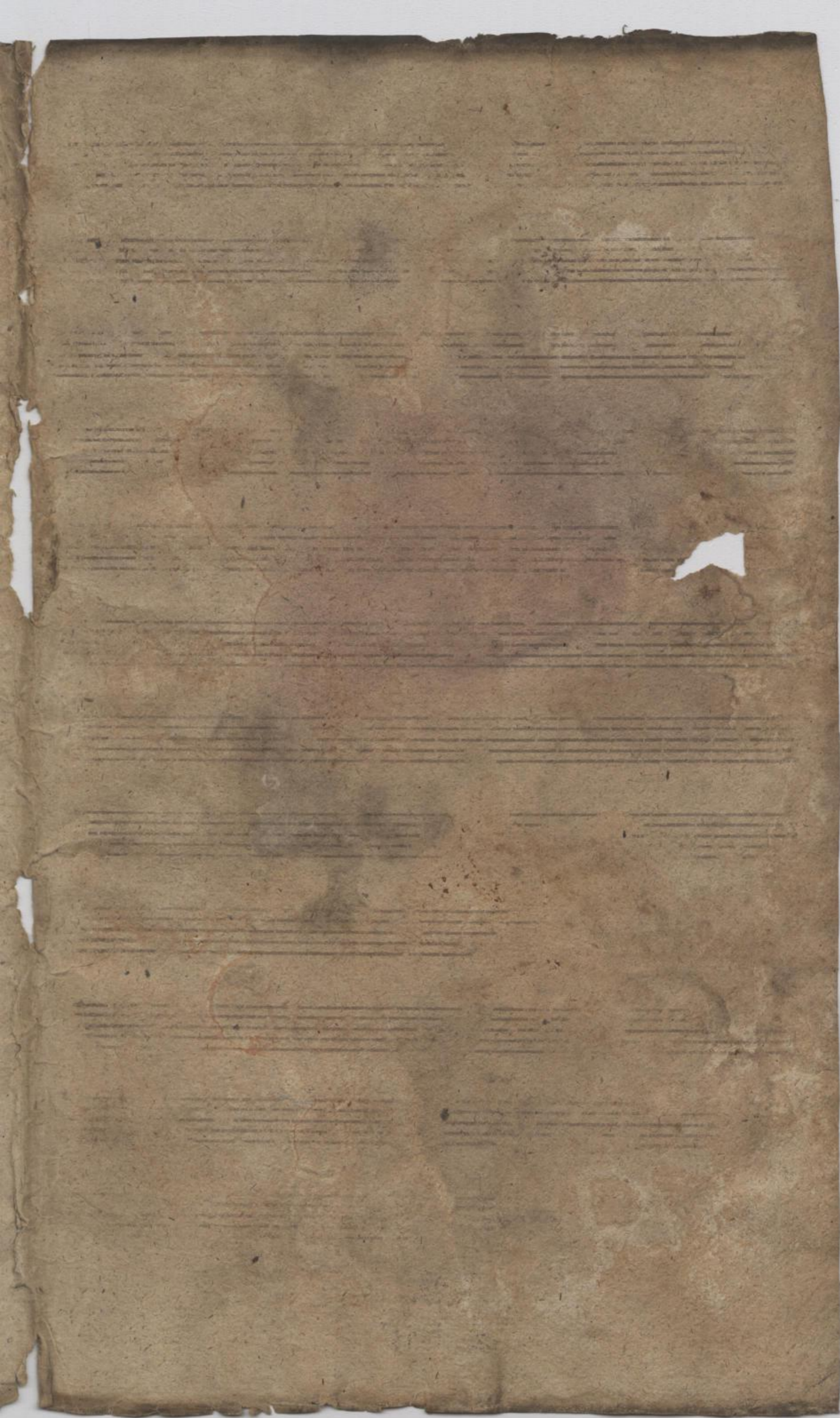
Die Benutzung dieser Handschrift ist nur unter der Bedingung gestattet, daß der Entleiher der hiesigen Bibliothek ein Stück seiner auf die Handschrift bezüglichen Veröffentlichung geschenkweise überläßt, sofern die Bibliotheksverwaltung nicht ausdrücklich auf die Überlassung verzichtet. Zum Durchzeichnen oder zur Herstellung von Lichtbildern ist besondere Erlaubnis einzuholen.

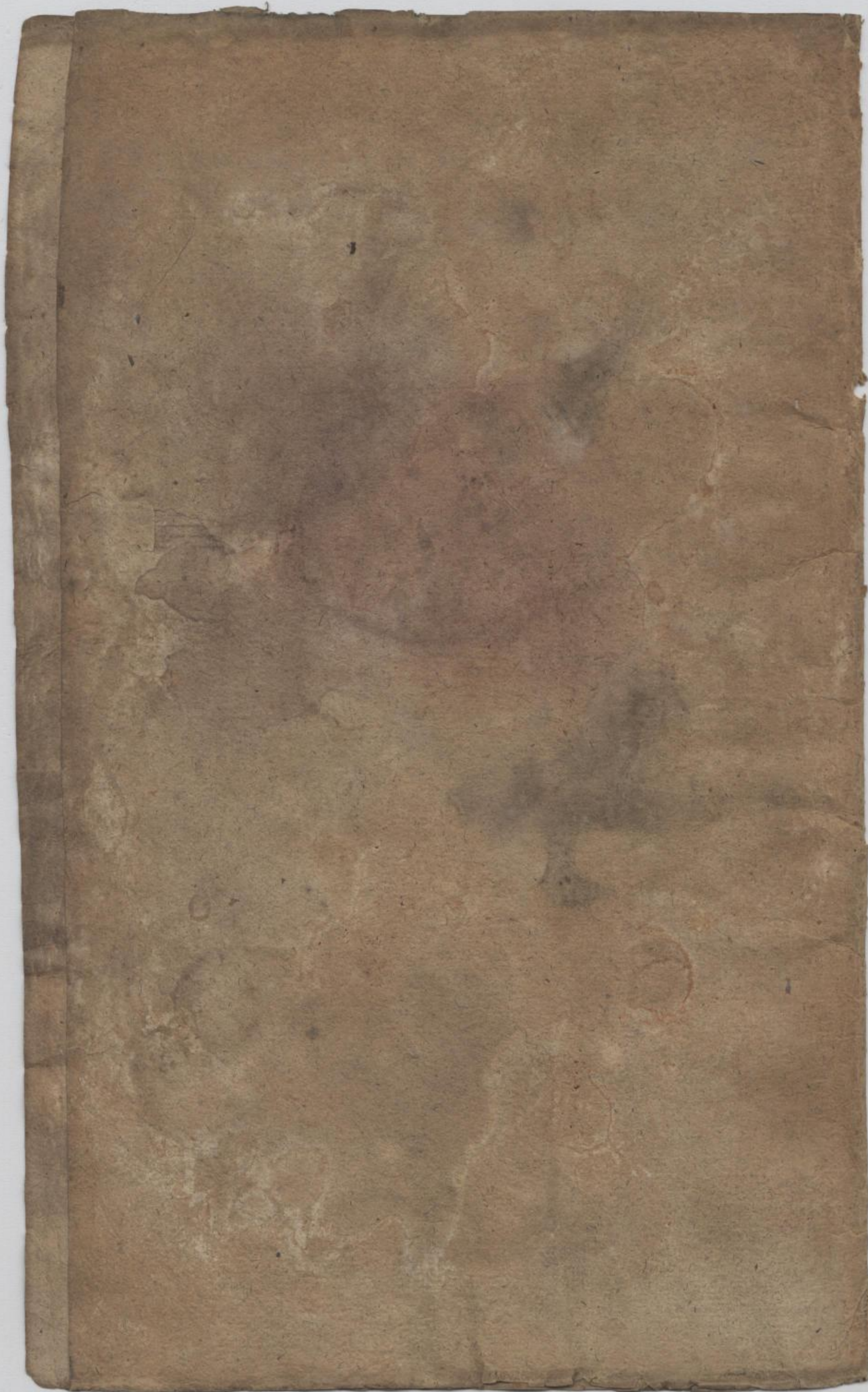
Belehrende Auskünfte oder Hinweise auf der Bibliotheksverwaltung unbekanntes Veröffentlichungen über diese Handschrift werden dankbar entgegengenommen.

Benutzer der Handschrift seit 1950

Datum	Name, Stand und Wohnung des Benutzers	Ort der Benutzung	Art der Benutzung (nur eingesehen?, ganz od. teilw. abgeschrieben?, ganz od. teilw. verglichen?)	Zweck der Benutzung (Ist Veröffentlichung beabsichtigt und in welcher Form?)







Sonata

Violino I^{mo}

Affettuoso

Volti Subito



(log 938)

Mus. 2392-N-15

5 4 2

27

Allegro

8

22 12 5
21 15 3

Sonata

Violino I^{mo}

Affettuoso

Tutti Subito

Hof 938

Mus. 2392-N-15



8

Alllegro # C

Handwritten musical notation on a five-line staff, featuring a treble clef, a key signature of one sharp (F#), and a common time signature (C). The notation includes various note values and rests.

Handwritten musical notation on a five-line staff, including a second ending bracket labeled "2." above the staff.

Handwritten musical notation on a five-line staff, continuing the piece with various note values and rests.

Handwritten musical notation on a five-line staff, featuring a treble clef, a key signature of one sharp (F#), and a common time signature (C). The notation includes various note values and rests.

Handwritten musical notation on a five-line staff, continuing the piece with various note values and rests.

Handwritten musical notation on a five-line staff, including a second ending bracket labeled "2." above the staff.

Handwritten musical notation on a five-line staff, continuing the piece with various note values and rests.

Handwritten musical notation on a five-line staff, featuring a treble clef, a key signature of one sharp (F#), and a common time signature (C). The notation includes various note values and rests.

Handwritten musical notation on a five-line staff, continuing the piece with various note values and rests.

Handwritten musical notation on a five-line staff, featuring a treble clef, a key signature of one sharp (F#), and a common time signature (C). The notation includes various note values and rests.

Handwritten musical notation on a five-line staff, including a second ending bracket labeled "2." above the staff.

Handwritten musical notation on a five-line staff, continuing the piece with various note values and rests.

40

1392 7
10 15 5

Sonata

Violino I ¹⁷²⁰

Andante

Handwritten musical score for Violino I, first movement. The score is written on six staves. The first staff begins with the tempo marking "Andante" and a treble clef. The key signature has one sharp (F#) and the time signature is common time (C). The music consists of a series of eighth and sixteenth notes, with some slurs and accents. The piece concludes with a double bar line on the sixth staff.

Tutti Subito.

Ms. 2392-N-15

Mus. 2392-N-15



6

41

Allegro

12

7/15

Sonata

Violino 2^{do}

ffettuoso

The first part of the sonata is written on six staves. It begins with a treble clef, a key signature of one sharp (F#), and a common time signature (C). The tempo/mood is marked 'ffettuoso'. The notation includes various note values, rests, and dynamic markings such as 'ff' and 'f'. The piece concludes with a double bar line.

Tolti Subito

The lower half of the page contains several empty musical staves, indicating that the second part of the sonata is not present on this page.

Flora 138

Mus. 2392-N-15

Sächs. Landesbibl.
8

113

Allegro 3.

Handwritten musical score on aged paper, featuring 12 staves of music. The score is in treble and bass clefs, with a key signature of one sharp (F#) and a 3/4 time signature. The tempo marking is *Allegro*. The notation includes various note values, rests, and dynamic markings like *p* and *f*. The piece concludes with a double bar line and a large scribble.

14)

14

2299

17.45

Sonata

Violino

L. d. d.

Affettuoso

Tutti Subito

42



10

(No. 938)

Ms. 2392-N-15

15

Allegro 3.

16

13
2392 11
20175

Sonata

Violino 2^o

Affettuoso

Voti Subito.

10 29387

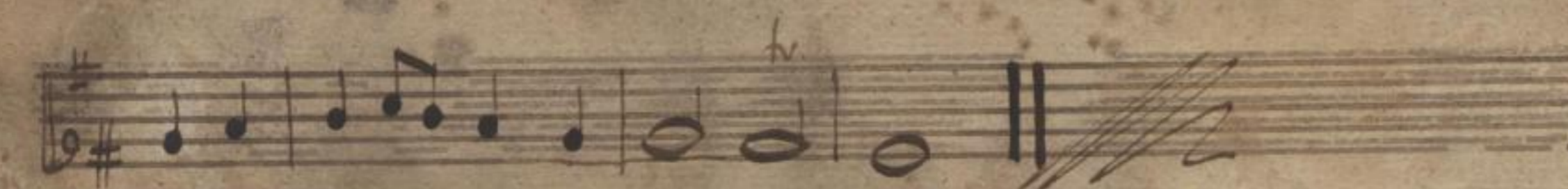
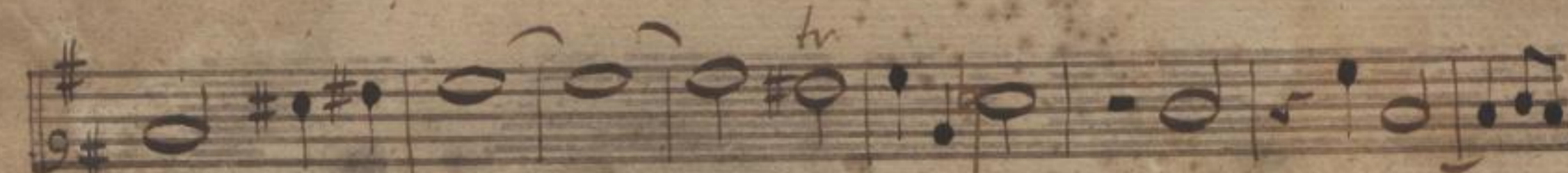
Mus. 2392-N-15



12

47

Alllegro 3.



15
13

18

13
145

Sonata Bassò.

Affettuoso



Tutti subito

16 29387

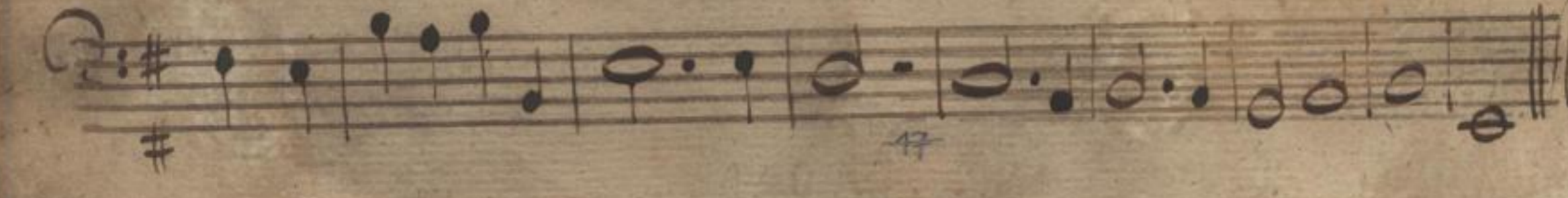
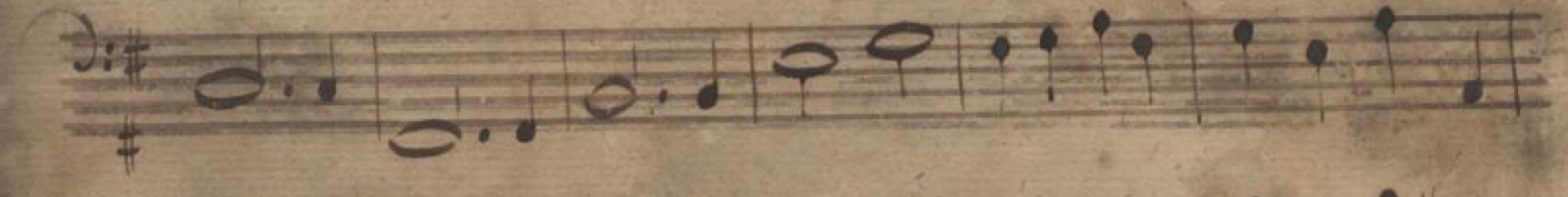
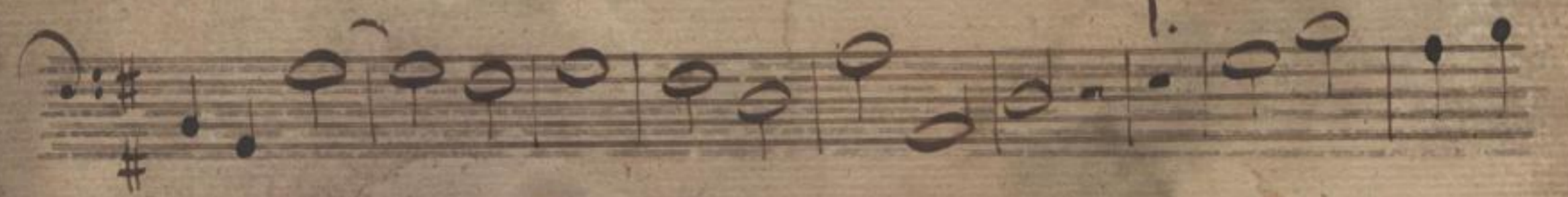
Mus. 2392-N-15

Sächs. Landesbibl.

14

(19)

Allegro # C



(20)

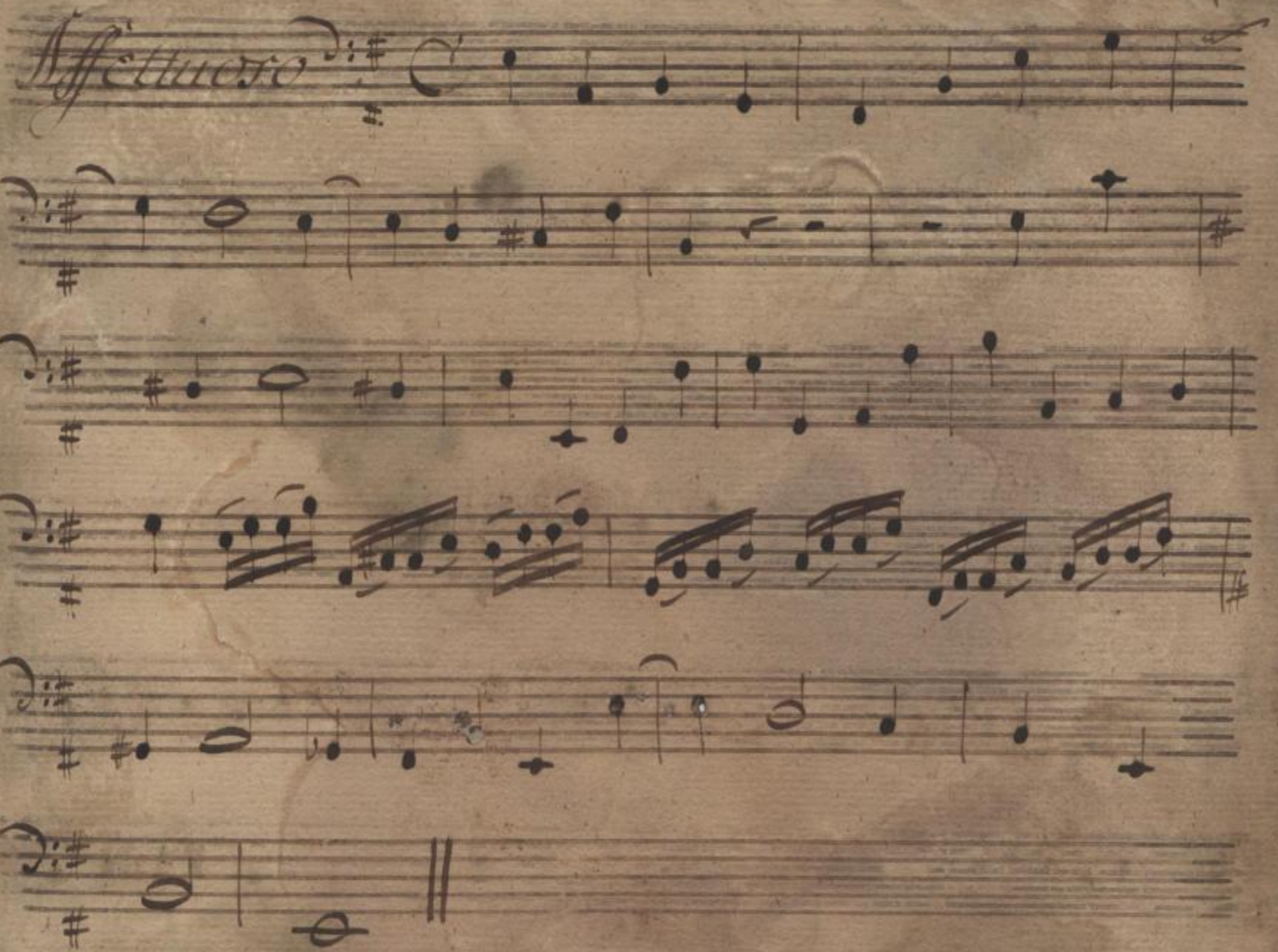
17

15

15

Sonata Bassò.

Affettuoso



Tutti subito

Mus. 2392-N-15

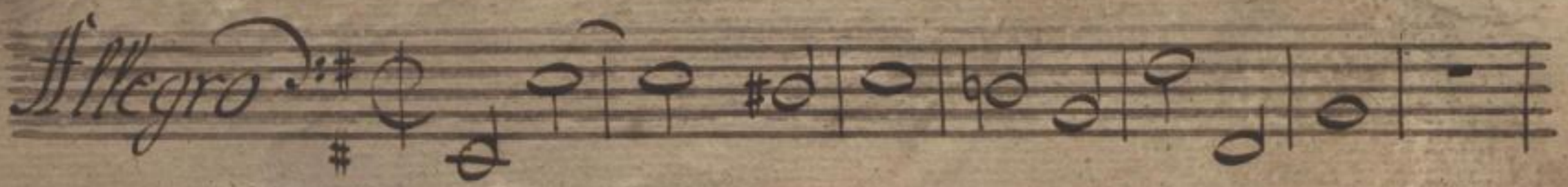
48



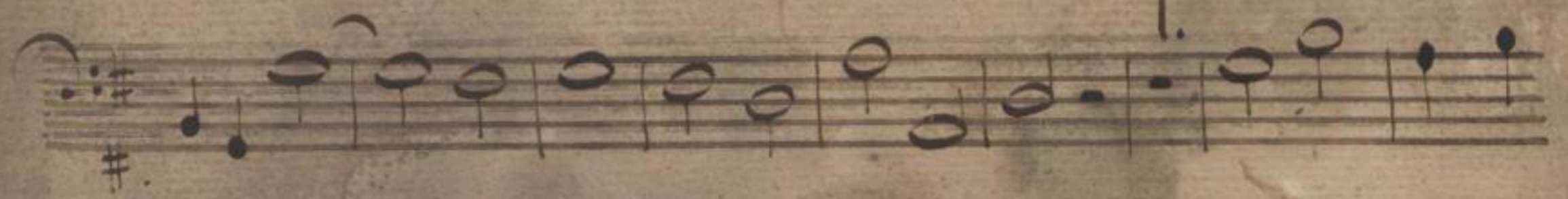
16

(Co 938)

121

Allegro 

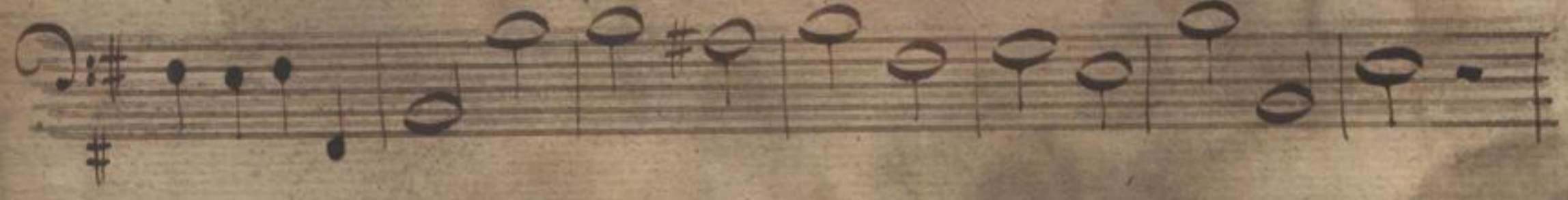























22

Wald 2292
17
45

49

17

Sonata Basfo.

Affettuoso

Volti

16 7438

Mus. 2392 - N-15

13



20

18

123

Allegro

A handwritten musical score on aged, yellowed paper. The score consists of 12 staves of music, each beginning with a treble clef, a key signature of one sharp (F#), and a common time signature (C). The notation includes various note values such as half notes, quarter notes, and eighth notes, along with rests and accidentals. The paper shows signs of age, including foxing and some staining. The word "Allegro" is written in cursive at the top left. At the bottom of the page, there are several handwritten numbers: "24" in the bottom left, "24" and "19" near the bottom center, and "76 | 45" at the bottom center.

24

24

19

76 | 45

Sonata Basso.

Affettuoso

Handwritten musical score for Bassoon Sonata, Affettuoso. The score consists of six staves. The first staff begins with a treble clef, a key signature of one sharp (F#), and a common time signature (C). The music is written in a cursive hand. The fourth staff contains a complex passage with many beamed notes. The sixth staff ends with a double bar line and repeat dots.

Molti Subito

Ms. 2392-N-15

Ms. 2392-N-15



25

Alllegro 





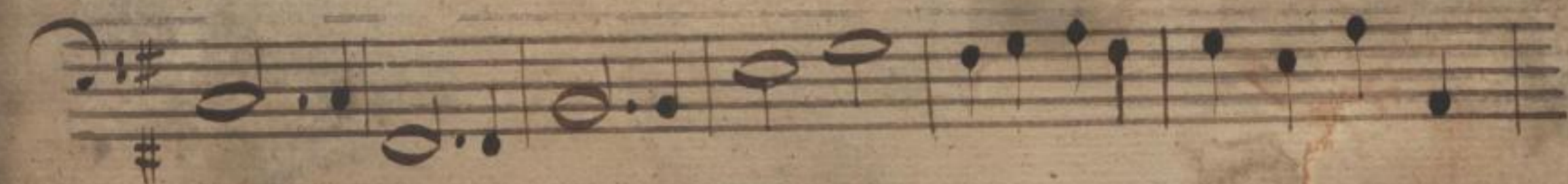


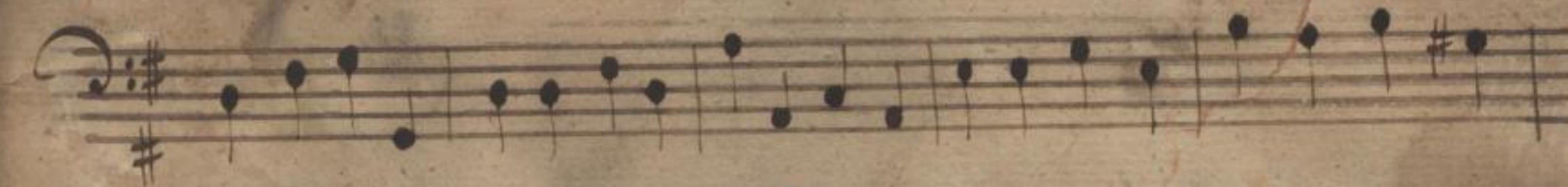




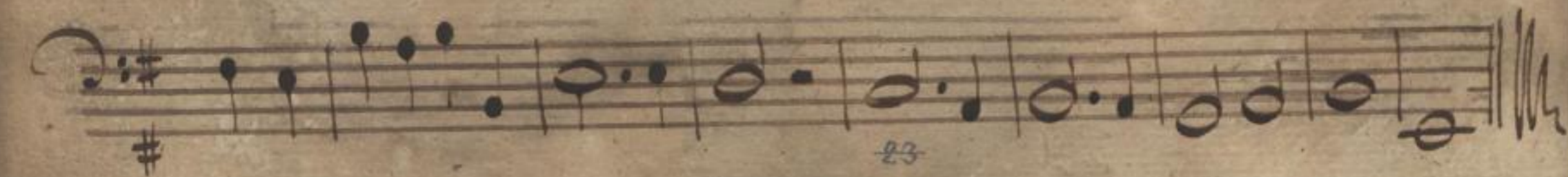












23

Handwritten signature

21

Handwritten number

26

Sonata

Basso

Affettuoso

Molti Subito.

Handwritten number: 16 928

Mus. 2392-N-15

Handwritten signature or initials

Sächs. Landesbibl.

22

24

27

Allegri

A handwritten musical score on aged, yellowed paper. The score consists of 12 staves of music, each with a treble clef and a key signature of one sharp (F#). The tempo is marked 'Allegri' at the beginning. The notation includes various note values, rests, and dynamic markings. The paper shows signs of age, including foxing and some staining.

25

23

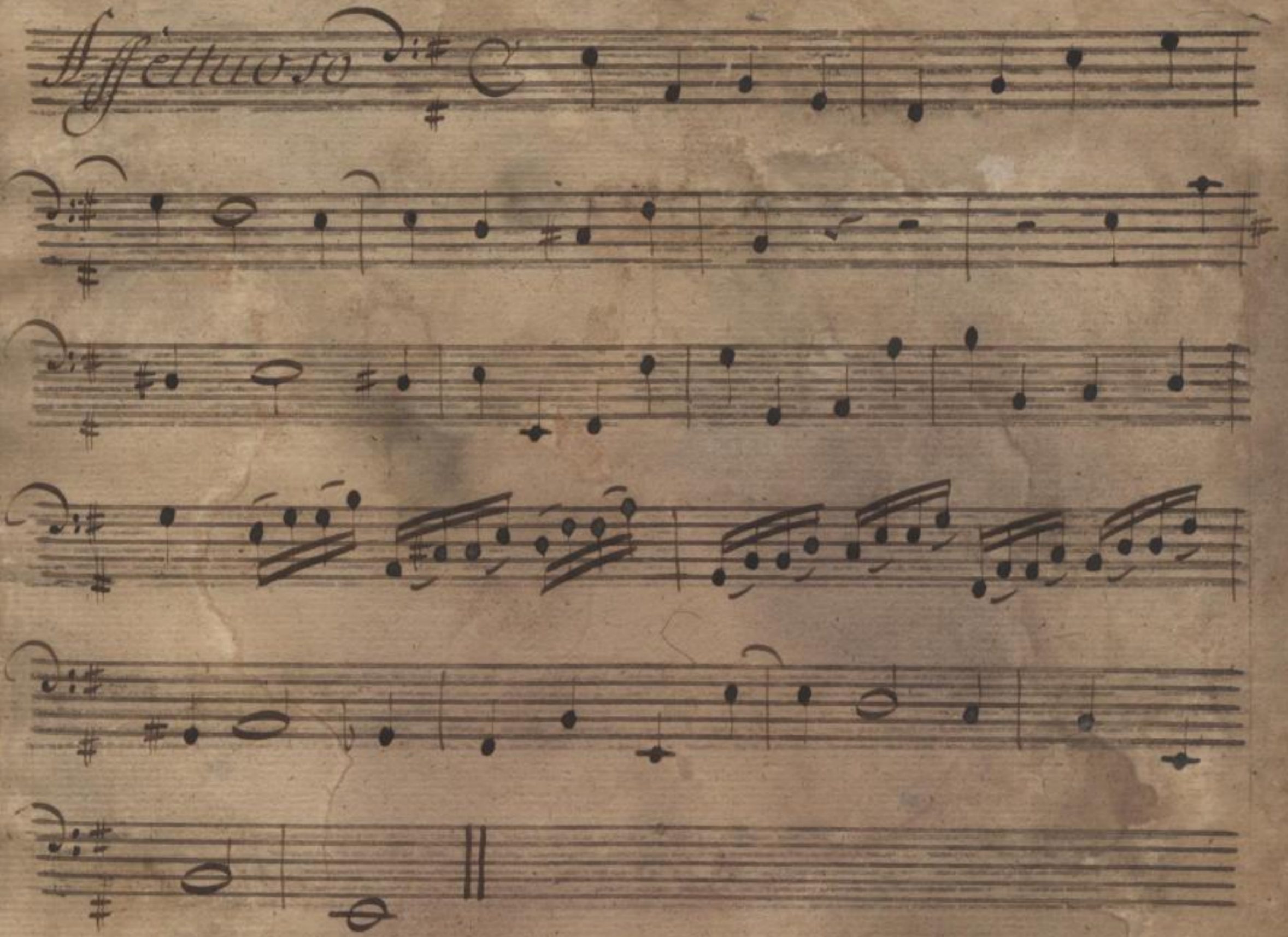
24

2392
9/11/10

Sonata

Basso.

Affettuoso



Tolti Subito.

26

Al 938

Mus. 2392-N-15



24

29

Alllegro

A handwritten musical score on aged, yellowed paper. The score consists of 12 staves of music. The first staff begins with the tempo marking 'Alllegro' in a cursive hand. The key signature is one sharp (F#) and the time signature is common time (C). The notation includes various note values such as half notes, quarter notes, and eighth notes, along with rests and accidentals. The paper shows signs of age, including foxing and some staining. A small '1.' is written at the end of the first staff. The bottom of the page features some faint markings, including the number '25' and a scribble.

~~30~~

25

Sonata

Basso Continuo.

Affettuoso

Volti subito

28

Handwritten number: 165938

Mus. 2392-N-15



26

31

Allegro $\text{D}^{\#}$

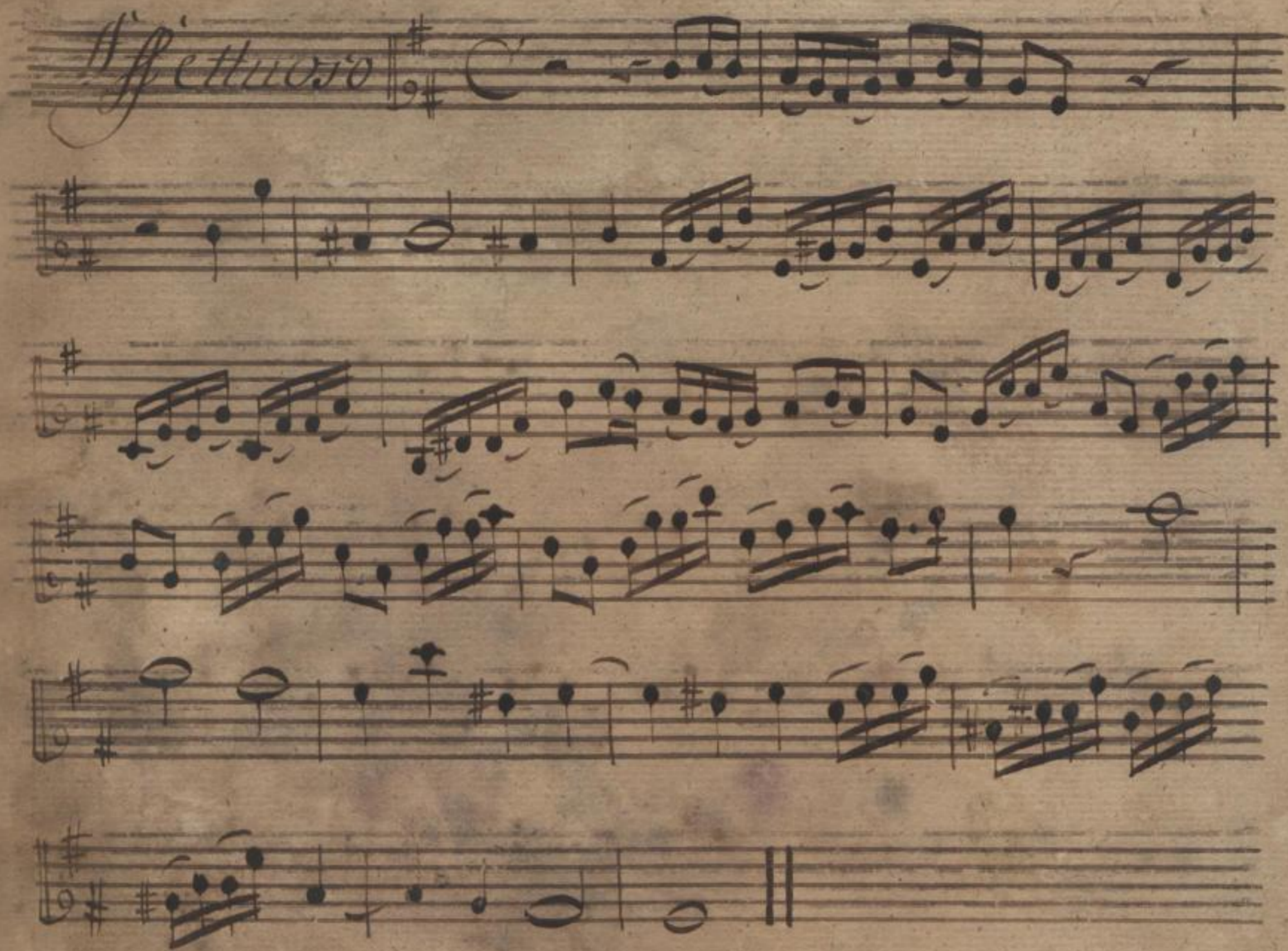
2392
M 27

3/2

16
Sonata

Oboë I^{mo}

Allegretto



Tutti Subito.

Mus 2392-N-15

30



28

(Wolf 938)

4

Allegro

34

2

2292
W 145 29

Sonata

Oboe 2^{da}

Affettuoso

Handwritten musical score for Oboe 2nd part. The score begins with a treble clef, a key signature of one sharp (F#), and a common time signature (C). The tempo marking is *Affettuoso*. The music consists of six staves of notation, featuring various rhythmic values, slurs, and dynamic markings such as *br* (bristando). The piece concludes with a double bar line on the sixth staff.

Molto Subito.

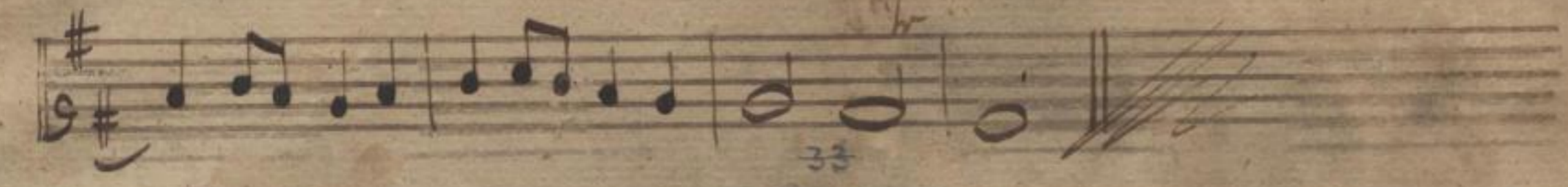
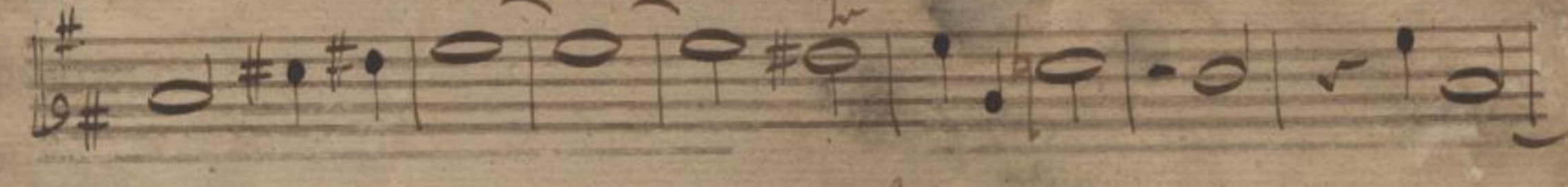
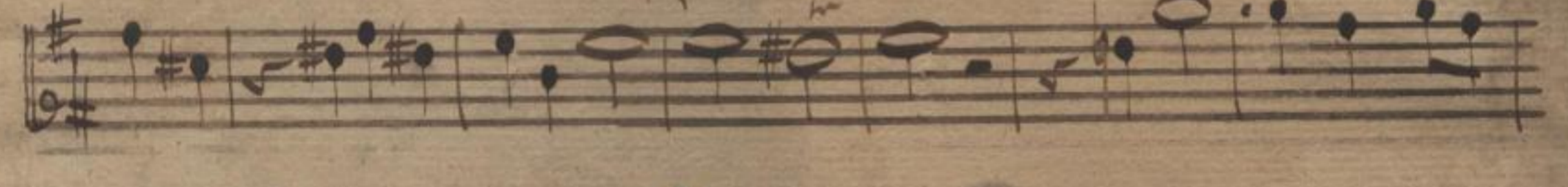
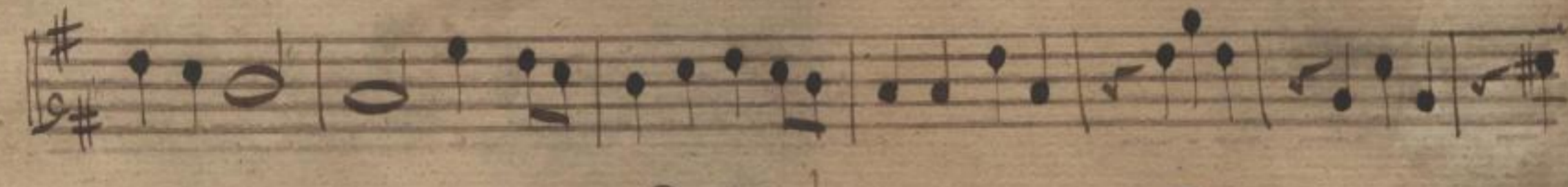
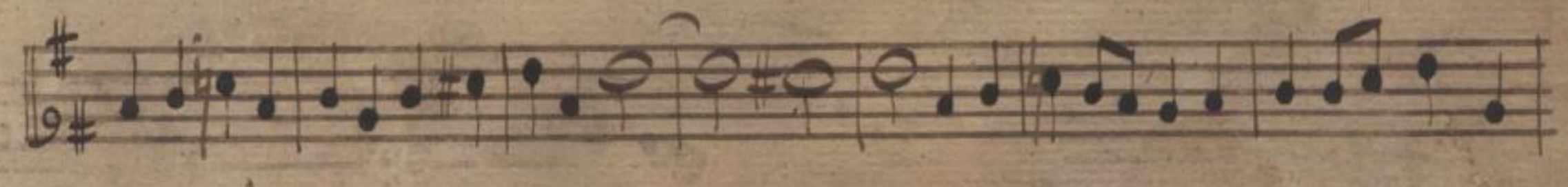
Mus. 2392-N-15

Ag 11 9381

Sächs. Landes-Bibl. 30

3

Allegro 3.



33
2309
31
4-115

4

Sonata

Violino I.

Andelluoso.

Allegro.



3
32

Handwritten: *Allegro*
Mus. 2392-N-45

3
33
15

6

