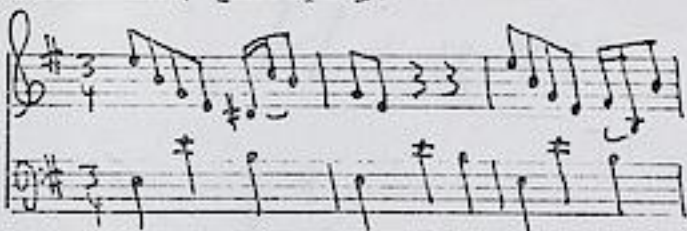


Telemann, Georg Philipp (1681-1767) BRD DS Mus.ms 1042/64

SONATA./à/Flauto traverso./Violino./e/Cembalo./Del Sign:/
Telemann./[Incipit]/ (e-moll)



Largo 3/4 e-moll - Vi-
vace 3/4 e-moll - Andan-
te 3/4 G-dur - Allegro
2/4 e-moll.

Ms.1.H.18.Jh.(J.S.Endler). 35 x 21,5 cm.

3 St.:fl,vl,b. 1,1,2 Bl. b unbez.

Alte Sign.: 652. 3775/64.

Graese?

TWV 42 e 10

1042
~~3445~~, 64.

652.

SONATA.

à

Flauto traverso.

Violino.

Cembalo.

Großherzoglich
Hessische
Hofbibliothek.

Del Sign:
Telemann.

pt. (4)

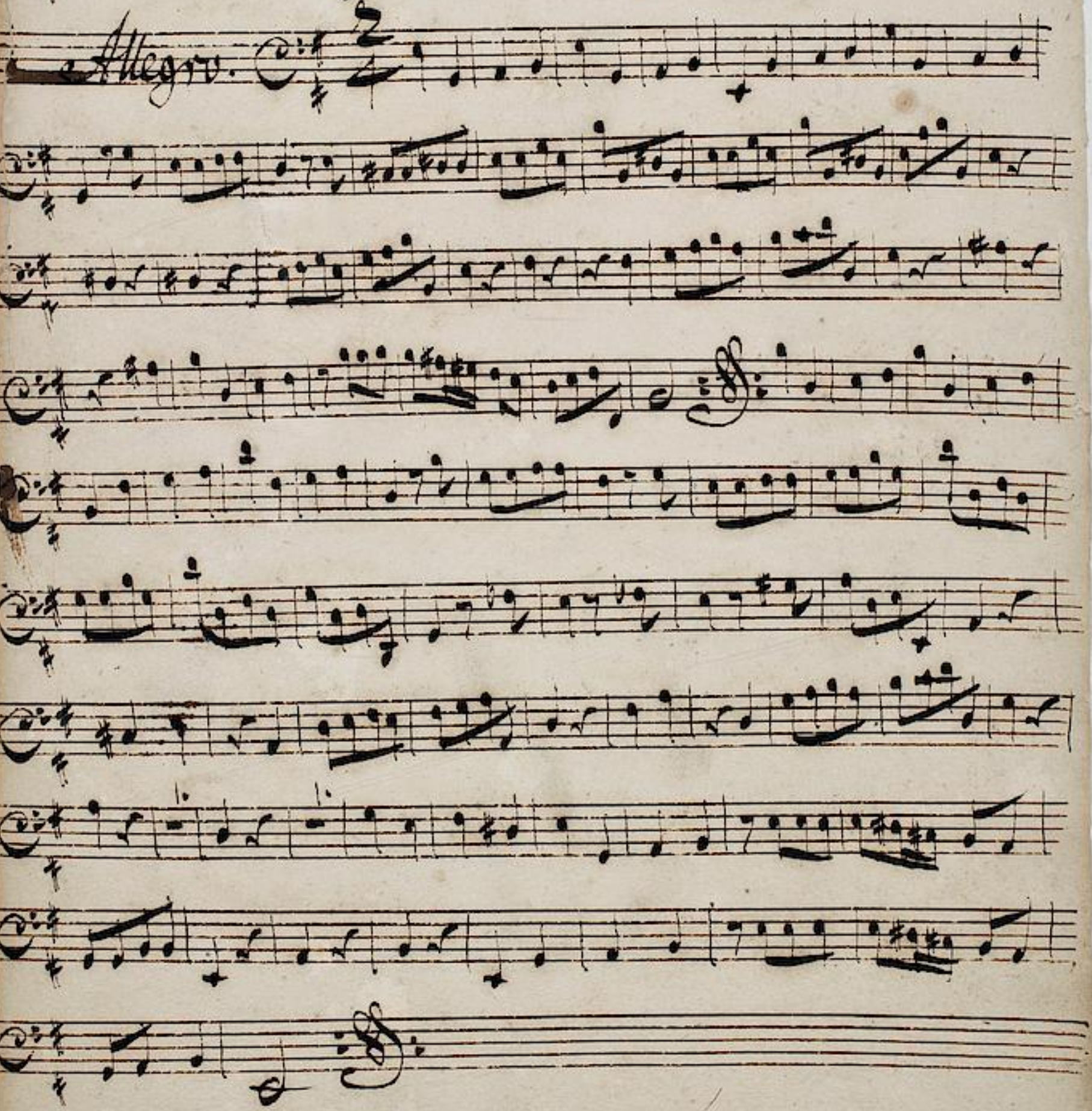


Basso.

Largo

Allegro

Andante. 

Allegro. 

Flauto Traverso. 3

Largo.

The first section of the manuscript is marked 'Largo'. It consists of five staves of music. The notation is in treble clef with a key signature of one sharp (F#) and a common time signature (C). The music features a melodic line with various rhythmic values, including eighth and sixteenth notes, and rests. There are several dynamic markings, including 'p' (piano) and 'f' (forte), and some articulation marks like slurs and accents. The section concludes with a double bar line.

Vivace.

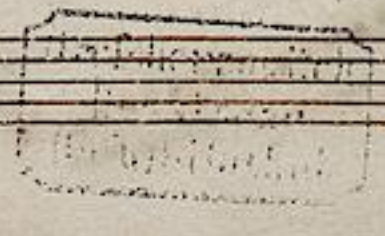
The second section of the manuscript is marked 'Vivace'. It consists of ten staves of music. The notation is in treble clef with a key signature of one sharp (F#) and a common time signature (C). The music is more rhythmic and energetic than the first section, featuring many sixteenth and thirty-second notes. There are several dynamic markings, including 'p' (piano) and 'f' (forte), and some articulation marks like slurs and accents. The section concludes with a double bar line.

Andante.

Handwritten musical notation for the *Andante* section, consisting of five staves of music. The notation is in a single system with a treble clef and a key signature of one sharp (F#). The music features a variety of note values, including eighth and sixteenth notes, and rests. The first staff begins with a treble clef and a key signature of one sharp. The music concludes with a double bar line.

Allegro.

Handwritten musical notation for the *Allegro* section, consisting of ten staves of music. The notation is in a single system with a treble clef and a key signature of one sharp (F#). The music is characterized by a faster tempo and includes complex rhythmic patterns, such as sixteenth-note runs and triplets. The first staff begins with a treble clef and a key signature of one sharp. The music concludes with a double bar line.



Violino.

Largo.

Handwritten musical notation for the Largo section, consisting of five staves of music in G major and 3/4 time. The notation includes various note values, rests, and dynamic markings.

Vivace.

Handwritten musical notation for the Vivace section, consisting of ten staves of music in G major and 3/4 time. The notation is more complex, featuring many sixteenth and thirty-second notes, and includes various dynamic markings.

Andante

Handwritten musical notation for the Andante section, consisting of four staves of music. The notation is in a single system with a treble clef and a key signature of one sharp (F#). The music features a melodic line with various note values and rests, and a bass line with a steady rhythmic accompaniment. The piece concludes with a double bar line.

Vivace

Handwritten musical notation for the Vivace section, consisting of ten staves of music. The notation is in a single system with a treble clef and a key signature of one sharp (F#). The music is characterized by a faster tempo and more complex rhythmic patterns, including sixteenth and thirty-second notes. The piece concludes with a double bar line and a decorative flourish.

Gräflich
Hessische
Hofbibliothek

