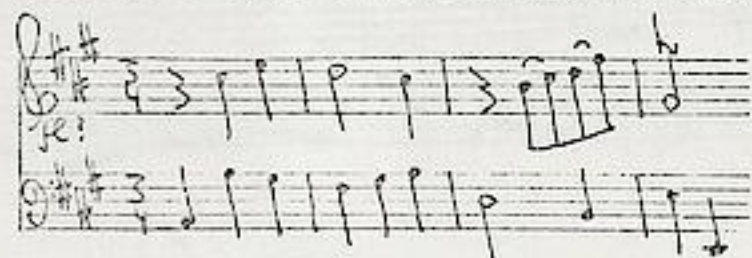


Telemann, Georg Philipp (1681-1767) · BRD DS Mus.ms 1042/27  
[Sonata A-dur] Telemann./[Überschrift]



Cantabile 3/4 A-dur -  
Vivace C A-dur - Andante  
C E-dur - [ohne Satz-  
bez.] 3/8 A-dur.

Ms. l. H. 18. Jh. 33,5 x 21 cm.  
partitur [fl, dessus de viole, b?]: 1 Bl.

Alte Sign.: Stempel: L mit Krone. 615. 3775/XXVII.

Graessner E 67  
TWV 42 A 10

Bis.

Telemann.

*Cantabile.*

Handwritten musical score for the 'Cantabile' section, consisting of three systems of three staves each. The notation includes various note values, rests, and clefs.

*Vivace.*

Handwritten musical score for the 'Vivace' section, consisting of three systems of three staves each. The notation is more rhythmic and includes many sixteenth and thirty-second notes.

Großherzoglich Hessische Hofbibliothek
--

*fol. (1)*

*Andante*

The image displays a page of handwritten musical notation, likely a score for piano. The page is divided into ten systems, each consisting of three staves. The notation is written in black ink on aged, slightly yellowed paper. The first system begins with the tempo marking "Andante" and a common time signature. The music features a variety of note values, including eighth and sixteenth notes, and rests. There are also some decorative flourishes and ornaments. The paper shows signs of wear, including some staining and a small tear at the bottom left corner.