

Telemann, Georg Philipp (1681-1767) BRD DS Mus.ms 1042/85  
E. H./SONATA./3/Violino/Viola di Gamba/et/Cembalo./Telemann./  
[Incipit]/(E-dur)



Siciliana 12/8 E-dur -  
Presto C E-dur - Andante  
3/4 cis-moll - Viva-  
ce 3/8 E-dur.

Ms. 1. H. 18. Jh. (J. S. Endler). 34,5 x 21 cm.  
3 St.: vl, vla di gamba, cembalo (unbez.). je 2 Bl.  
Alte Sign.: 673. 3775/85.

Grasser E 24  
TWV 42 E 7



1042  
3775/85

C. #.  
673.

# SONATA.

<sup>a</sup>  
Violino

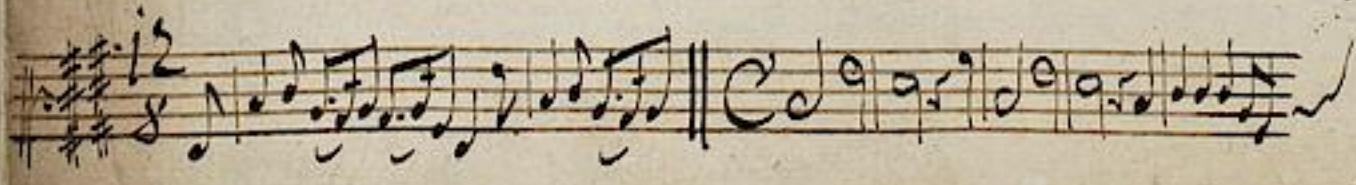
Viola diamba

et  
Cembalo.

Telemann.

to durr

fol 8





1042/85

2819 80.

# Violino.

## Siciliana.

Handwritten musical score for the first section, *Siciliana*. It consists of eight staves of music. The notation includes treble clefs, a key signature of two sharps (F# and C#), and a 12/8 time signature. The music features a mix of eighth and sixteenth notes, often beamed together, with some rests and dynamic markings. The piece concludes with a double bar line.

## Presto.

Handwritten musical score for the second section, *Presto*. It consists of five staves of music. The notation includes treble clefs, a key signature of two sharps (F# and C#), and a 2/4 time signature. The music is characterized by a fast tempo and features many sixteenth and thirty-second notes, often beamed together in rapid passages. The piece concludes with a double bar line.



A page of handwritten musical notation on aged paper, featuring 14 staves. The notation is written in a cursive hand and includes various musical symbols such as clefs, key signatures (two sharps), time signatures, and notes. The music appears to be a single melodic line. The staves are numbered 1 through 14. The notation includes many sixteenth and thirty-second notes, often beamed together. There are also some rests and dynamic markings. The paper shows signs of age, including some staining and discoloration.

*Andante.*





*Andante.*

Handwritten musical notation for the *Andante* section. It consists of three staves of music. The first staff begins with a treble clef, a key signature of one sharp (F#), and a 3/4 time signature. The music is written in a flowing, melodic style with various note values and rests.

*Vivace.*

Handwritten musical notation for the *Vivace* section. It consists of ten staves of music. The first staff begins with a treble clef, a key signature of one sharp (F#), and a 3/8 time signature. The music is more rhythmic and energetic than the *Andante* section, featuring many eighth and sixteenth notes.



Handwritten musical score on aged paper, featuring ten staves. The notation is in treble clef with a key signature of one sharp (F#). The first five staves contain musical notation, including eighth and sixteenth notes, rests, and a triplet of eighth notes on the third staff. The fifth staff ends with a double bar line. The remaining five staves are mostly empty, with some faint notation visible on the left edge of the page.



1042/85

3819 Edu.

Siciliana.

# Viola di Tamba.

The first system of the handwritten musical score consists of ten staves. The first staff begins with a treble clef, a key signature of two sharps (F# and C#), and a 3/8 time signature. The music is written in a cursive, handwritten style. The first staff contains a melodic line with various note values and rests. The subsequent staves provide accompaniment, featuring rhythmic patterns and chordal structures. The system concludes with a double bar line.

The second system of the handwritten musical score consists of ten staves. It begins with the tempo marking 'Allegro' written in a decorative script. The key signature remains two sharps, and the time signature is now common time (C). The notation continues with a mix of melodic and rhythmic elements. The system ends with a double bar line.



A page of handwritten musical notation on aged paper, featuring 14 staves. The notation is in a single system, likely for a single melodic line. The key signature is three sharps (F#, C#, G#), and the time signature is common time (C). The music consists of various rhythmic values including eighth, sixteenth, and thirty-second notes, as well as rests and slurs. There are several 'x' marks above specific notes, possibly indicating fingerings or performance instructions. The piece concludes with a double bar line on the final staff.

162

*Andante.*



*Andante.*

*Vivace.*



Handwritten musical score on aged paper, featuring multiple staves of music. The notation includes various rhythmic values, accidentals, and a double bar line. The number 184 is written below the fifth staff. The left edge shows the continuation of the score from the previous page.

184





1042/85.

2819 Edus.

Cembalo.

*Siciliana.*

Handwritten musical score for 'Siciliana' in G major, 3/8 time. The score consists of ten staves. The first staff begins with a treble clef, a key signature of one sharp (F#), and a 3/8 time signature. The music is written in a cursive hand and includes various rhythmic values such as eighth and sixteenth notes, as well as rests. There are several '77' markings above notes in the second, fourth, fifth, seventh, and eighth staves, likely indicating fingerings. A '6' with a cross is written above a note in the fifth staff. The piece concludes with a double bar line and a final note on the tenth staff.

*Presto.*

Handwritten musical score for 'Presto' in G major, common time (C). The score consists of four staves. The first staff begins with a treble clef, a key signature of one sharp (F#), and a common time signature. The music is written in a cursive hand and features a more rhythmic and active melody than the 'Siciliana'. It includes eighth and sixteenth notes, as well as rests. The piece concludes with a double bar line and a final note on the fourth staff.



Handwritten musical score on 12 staves. The notation includes treble clefs, a key signature of one sharp (F#), and various rhythmic values such as eighth and sixteenth notes. There are several 'x' marks above specific notes on the second, eighth, and ninth staves. The piece concludes with a double bar line on the tenth staff, followed by a large, stylized 'C' on the eleventh staff.

*Andante.*



*Andante.*

Handwritten musical score for the 'Andante' section, consisting of three staves. The first staff begins with a treble clef, a key signature of one sharp (F#), and a 3/4 time signature. The music features a series of notes with various ornaments and rests. The second and third staves continue the melodic line with similar notation and ornaments.

*Vivace.*

Handwritten musical score for the 'Vivace' section, consisting of ten staves. The first staff begins with a treble clef, a key signature of one sharp (F#), and a 3/8 time signature. The music is characterized by a more rhythmic and active melody compared to the 'Andante' section, with frequent eighth and sixteenth notes.



Handwritten musical score on five staves. The notation includes treble clefs, a key signature of one sharp (F#), and a common time signature (C). The music consists of a series of eighth and sixteenth notes, some beamed together, and rests. The fifth staff concludes with a double bar line and a fermata symbol.

Seven empty musical staves on the right side of the page, with some faint notation visible on the left edge of the page.