

Telemann, Georg Philipp (1681-1767)

BRD DS Mus.ms 1034/35a

G. b. / OUVERTURE. / A. / 2. Hautbois / 2 Dessus, pour les Violons, /  
Viole / Basson / et / Basse. / Telemann. / [Incipit] /



10 Sätze.  
vgl. Hoffmann.

Ms. l. H. 18. Jh. (J. S. Endler). 34,5 x 21 cm.

8 St.: dessus 1, 2, vla, b, bc (bez.), ob 1, 2, fag.  
4, 2, 2, 2, 2, 3, 3, 2 Bl. [1. Stimmensatz]

Alte Sign.: 3360.

Hoffmann, G 5.



S. 4. ~~1034/35~~

# OVERTURE<sup>5.</sup>

2. Hautbois *Mus 1034/35*  
2. Dessus, pour les Violons,  
Viole  
Basson  
et  
Basse. *Telemann.*





III





#

3360/35  
1034

# Ouverture

a

2 Hautbois

Deessus pour les Violons,

Ataute Contre } pour les Violons,  
Taille

Basson

et

Basse pour les Violons.

de Mr. Telemann.

folle (44) u

G. H.



Mus





Mus 3360/35  
1034

39

Premier Dessus.





Ouverture.

Handwritten musical score for the Overture section, consisting of 12 staves of music. The notation is in G major (one sharp) and common time (C). The score features a variety of rhythmic patterns, including eighth and sixteenth notes, and rests. There are some dynamic markings and phrasing slurs throughout the piece.

Partial handwritten musical score on the right page, showing the beginning of the 'Les Angures' section. The notation is in G major and common time, continuing from the previous page.

Les Angures.

Handwritten musical score for the 'Les Angures' section, consisting of 12 staves of music. The notation is in G major and common time. The score features a variety of rhythmic patterns, including eighth and sixteenth notes, and rests. There are some dynamic markings and phrasing slurs throughout the piece.

Rondeau.

Partial handwritten musical score on the right page, showing the beginning of the 'Rondeau' section. The notation is in G major and common time, continuing from the previous page.



*Les Anglaises*

*Tris tac:*

*Rondeau*



Entrée.

Handwritten musical score for 'Entrée' in G major, 3/4 time. It consists of six staves of music. The notation includes various rhythmic values, accidentals, and dynamic markings. A 'Cresc.' marking is visible on the fifth staff.

La Joye.

Handwritten musical score for 'La Joye' in G major, 2/4 time. It consists of five staves of music. The notation is characterized by frequent sixteenth-note patterns and rests.



Sarabande.

Sarabande.

Handwritten musical score for 'Sarabande' on the top right page, in G major, 3/4 time. It consists of six staves of music.

Handwritten musical score for 'La Joye' on the bottom right page, in G major, 2/4 time. It consists of five staves of music.



Sarabande.

Handwritten musical score for Sarabande, consisting of approximately 12 staves. The notation includes various note values (quarter, eighth, and sixteenth notes), rests, and clefs (treble and bass). The music is written in a single system across the page.

Figure.

Handwritten musical score for Figure, consisting of approximately 12 staves. The notation includes various note values and rests. The music is written in a single system across the page.

Favorite.

Sarabande.

Empty musical staves on the bottom half of the page, with the word 'Sarabande.' written at the beginning of the first staff.



Sarotte  
en  
Londeau.

Handwritten musical notation for 'Sarotte en Londeau' on four staves. The notation includes treble clefs, a key signature of one sharp (F#), and a common time signature (C). The music features various rhythmic values and ornaments. A fermata is present over a note on the second staff, and a '7.' is written above a measure on the same staff. The piece concludes with a double bar line and the word 'Fin' written below the staff.

Plainte.

Handwritten musical notation for 'Plainte' on five staves. The notation includes treble clefs, a key signature of one sharp (F#), and a common time signature (C). The music features various rhythmic values and ornaments. A fermata is present over a note on the second staff, and a 't' is written above a measure on the same staff. The piece concludes with a double bar line and a fermata below the staff.

Menuet.

Menuet  
I.

Handwritten musical notation for 'Menuet I' on three staves. The notation includes treble clefs, a key signature of one sharp (F#), and a 3/4 time signature. The music features various rhythmic values and ornaments. The piece concludes with a double bar line.

Menuet 3.

Handwritten musical notation for 'Menuet 3' on two staves. The notation includes treble clefs, a key signature of one sharp (F#), and a 3/4 time signature. The music features various rhythmic values and ornaments. The piece concludes with a double bar line.





Mennet

Musical notation for the first system, including a treble clef, a key signature of one sharp (F#), and a 3/4 time signature. The notation consists of a single melodic line on a five-line staff.

Da Capo || Mennet 2. var. || Mennet 1. rep. ||

Musical notation for the second system, starting with the label "Mennet 3." and a 3/4 time signature. It features a single melodic line on a five-line staff.

Musical notation for the third system, ending with the label "Mennet 1. rep." and a double bar line. It features a single melodic line on a five-line staff.





Ouverture. mus 3360  
1034 35

Secondo Dessus. 43



*Handwritten musical notation at the end of the page, including a treble clef and a common time signature.*



Les Augures.

La Foye

Handwritten musical notation for 'Les Augures' on a single staff. The notation includes a treble clef, a key signature of one sharp (F#), and a common time signature (C). The music consists of a series of eighth and sixteenth notes, with some rests and a double bar line near the end.

Handwritten musical notation for 'La Foye' on a single staff. The notation includes a treble clef, a key signature of one sharp (F#), and a common time signature (C). The music consists of a series of eighth and sixteenth notes.

Trio tac.

Saraba

Handwritten musical notation for 'Fondeau' on a single staff. The notation includes a treble clef, a key signature of one sharp (F#), and a 3/4 time signature. The music features a series of eighth and sixteenth notes, with some rests and a double bar line. There are markings '1.', '2.', and '22.' above the staff.

Handwritten musical notation for 'Saraba' and 'Figue' on a single staff. The notation includes a treble clef, a key signature of one sharp (F#), and a common time signature (C). The music consists of a series of eighth and sixteenth notes.

Da Capo

Handwritten musical notation for 'Entre' on a single staff. The notation includes a treble clef, a key signature of one sharp (F#), and a common time signature (C). The music consists of a series of eighth and sixteenth notes, with some rests and a double bar line. There are markings '1.', '10', and '2.' above the staff.

Handwritten musical notation for 'Entre' on a single staff. The notation includes a treble clef, a key signature of one sharp (F#), and a common time signature (C). The music consists of a series of eighth and sixteenth notes.

La Foye.





La Joye.

Handwritten musical score for 'La Joye'. It consists of four staves of music. The first staff is the treble clef, and the second is the bass clef. The key signature has one sharp (F#). The music is written in a cursive hand with various note values and rests.

Sarabande.

Handwritten musical score for 'Sarabande'. It consists of three staves of music. The first staff is the treble clef, and the second is the bass clef. The key signature has one sharp (F#). The music is written in a cursive hand with various note values and rests.

Figure.

Handwritten musical score for 'Figure'. It consists of seven staves of music. The first staff is the treble clef, and the second is the bass clef. The key signature has one sharp (F#). The music is written in a cursive hand with various note values and rests.

oye.

Favotte.



# Savotte

*en*  
Rondeau.  $\text{G}\sharp\text{C}$

$\text{G}\sharp\text{C}$

$\text{G}\sharp\text{C}$

$\text{G}\sharp\text{C}$  Da Capo //

Plainte.  $\text{G}\sharp\text{C}$

$\text{G}\sharp\text{C}$

$\text{G}\sharp\text{C}$

$\text{G}\sharp\text{C}$

Menuet.  $\text{G}\sharp\text{C}$  3/4

$\text{G}\sharp\text{C}$  3/4

$\text{G}\sharp\text{C}$  3/4 Men. 2. *tr.* // Menuet 1. *rep.* //

Menuet 3.  $\text{G}\sharp\text{C}$  3/4

$\text{G}\sharp\text{C}$  3/4

$\text{G}\sharp\text{C}$  3/4 Men. 1. *rep.* //





Overture. 1034

Mus 3560/35

Viola.

13

Handwritten musical score for Viola, Overture. 1034, Mus 3560/35. The score consists of 13 staves of music in G major and 3/4 time. It features various rhythmic patterns, including eighth and sixteenth notes, and rests. Performance markings include "pizz." and "fz.".





Les Augures.

Handwritten musical notation for the first section of 'Les Augures', consisting of four staves with various notes and rests.

Trio tac.

Handwritten musical notation for the 'Trio tac.' section, including a 'Ritornel' section with multiple staves and dynamic markings like 'piano'.

Handwritten musical notation for the 'Entrée' section, featuring several staves of music with a 'piano' marking at the bottom.

La Foye.

Handwritten musical notation for the first part of 'La Foye', including two staves.

Sarabande

Handwritten musical notation for the 'Sarabande' section, including two staves.

Figure.

Handwritten musical notation for the 'Figure' section, including two staves.

Handwritten musical notation for the final part of the page, including two staves.



La Foye.

Handwritten musical notation for the piece 'La Foye'. It consists of four staves. The first staff begins with a treble clef, a key signature of one sharp (F#), and a 2/2 time signature. The music is written in a cursive hand with various note values and rests.

Sarabande.

Handwritten musical notation for the piece 'Sarabande'. It consists of three staves. The first staff begins with a treble clef, a key signature of one sharp (F#), and a 3/4 time signature. The music features a slower tempo and includes some dynamic markings.

Figura.

Handwritten musical notation for the piece 'Figura'. It consists of seven staves. The first staff begins with a treble clef, a key signature of one sharp (F#), and a 3/4 time signature. The notation is dense with many notes and rests.

Da Capell

Handwritten musical notation for the piece 'Da Capell'. It consists of seven staves. The first staff begins with a treble clef, a key signature of one sharp (F#), and a 3/4 time signature. The notation is dense with many notes and rests.

Favotte.



*Savotte*

*en Rondeau.*

Handwritten musical notation for the first section, *Savotte en Rondeau*. It consists of four staves of music in G major and common time. The first staff begins with a treble clef, a key signature of one sharp (F#), and a common time signature (C). The music features a mix of eighth and sixteenth notes. The section concludes with the instruction *Da Capo* followed by a double bar line.

*Plainte.*

Handwritten musical notation for the second section, *Plainte*. It consists of four staves of music in G major and common time. The notation includes various note values and rests, with some notes beamed together. The section ends with a double bar line.

*Menuet 1.* Handwritten musical notation for the first minuet, starting with a treble clef, a key signature of one sharp, and a 3/4 time signature.

Handwritten musical notation for the second minuet, starting with a treble clef, a key signature of one sharp, and a 3/4 time signature.

*Menuet 2. ter. Menuet 1. rep.*

*Menuet 3.* Handwritten musical notation for the third minuet, starting with a treble clef, a key signature of one sharp, and a 3/4 time signature.

Handwritten musical notation for the first minuet, continuing from the previous staff.

Handwritten musical notation for the first minuet, concluding with a double bar line.

*Menuet 1. rep.*

*Ouvr*

Partial view of handwritten musical notation on the right page, showing the beginning of a section labeled *Ouvr*. The notation is in G major and common time, with a treble clef and a key signature of one sharp.



Overture. mus 3360/35 *Basso.*

26

Handwritten musical score for Bassoon, consisting of 12 staves. The notation includes various rhythmic values, accidentals, and dynamic markings. The piece concludes with a double bar line and repeat dots on the final staff.



*C*



Les Augures.

La Foye.

Handwritten musical notation for the first section of 'Les Augures'. It consists of five staves of music in C major, 3/4 time. The notation includes various note values, rests, and dynamic markings such as 'piano'.

Handwritten musical notation for the first section of 'La Foye'. It consists of five staves of music in C major, 3/4 time.

Trio tacet

Sarabande

Handwritten musical notation for the second section of 'Les Augures'. It consists of five staves of music in C major, 3/4 time. The notation includes various note values, rests, and dynamic markings such as 'piano'. The section concludes with the instruction 'Da Capo'.

Handwritten musical notation for the second section of 'La Foye'. It consists of five staves of music in C major, 3/4 time.

Handwritten musical notation for the third section of 'Les Augures'. It consists of five staves of music in C major, 3/4 time. The notation includes various note values, rests, and dynamic markings such as 'piano'.

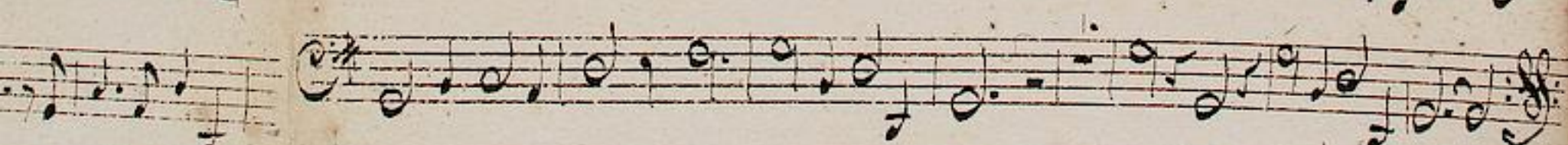
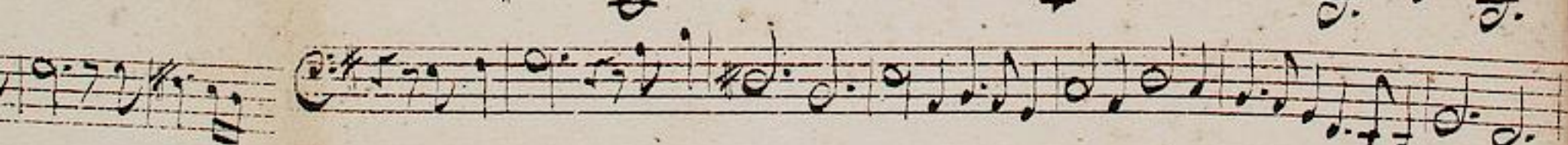
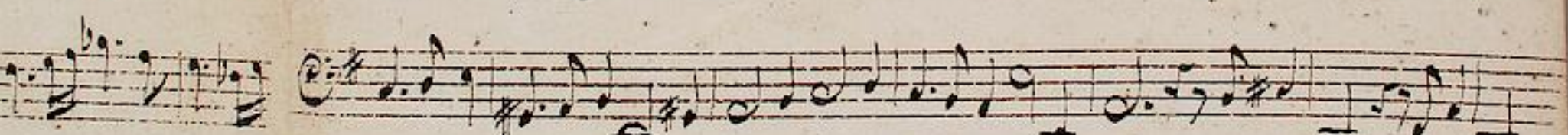
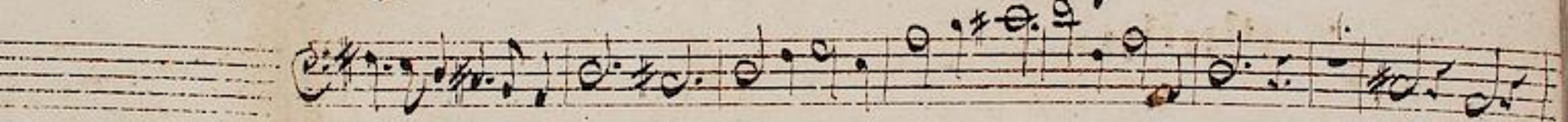
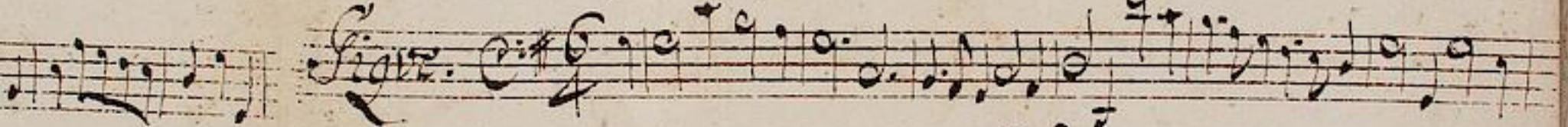
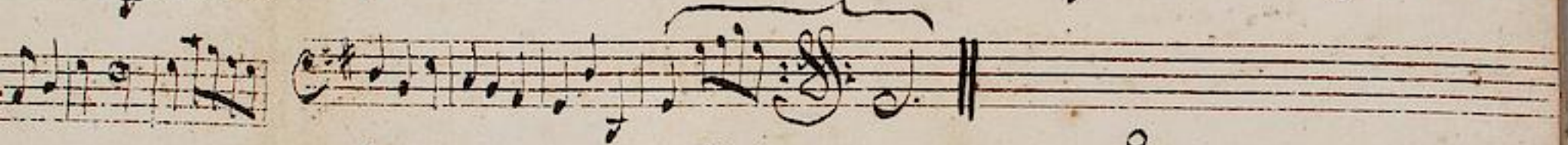
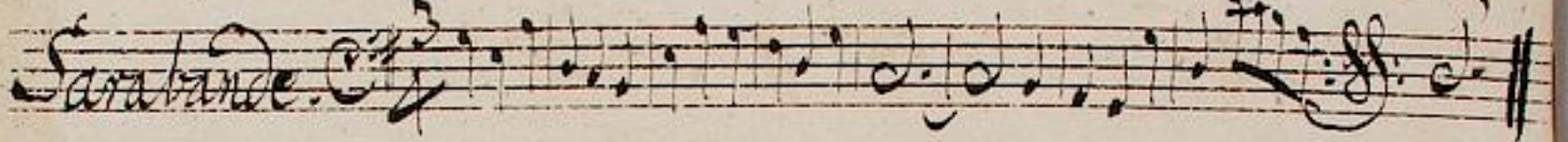
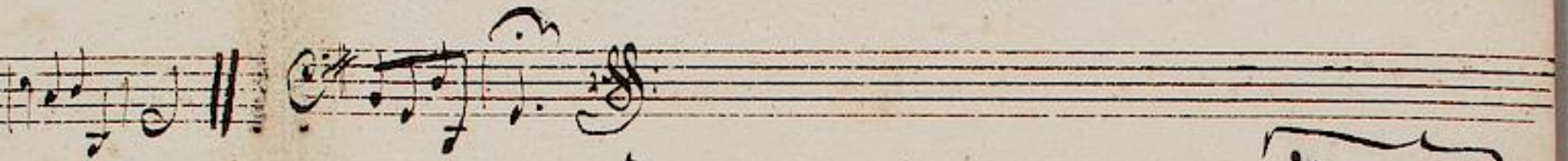
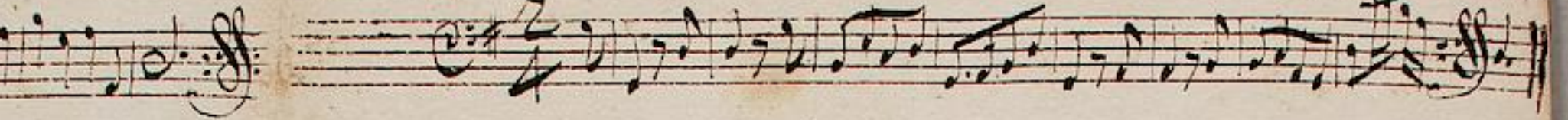
Handwritten musical notation for the third section of 'La Foye'. It consists of five staves of music in C major, 3/4 time.

La Foye.



La Joye.

24



La Joye.

Favotte.





Savotte.

*en*  
Londeau.

*8.*

*Da Capo* ||

Haute.

Muet 1. *altern:*

*Muet tac. || Muet 1. repet.*

Muet 2.

Ouwe



Ouverture. Mus 1034/35

Basse Continue.

The image shows a page of handwritten musical notation for a piece titled "Ouverture. Mus 1034/35" and "Basse Continue." The score is written on 14 staves. The notation is in a historical style, featuring various rhythmic values, accidentals, and fingerings. A purple circular library stamp is visible in the lower right corner of the page.



Les Augures.

Handwritten musical score for 'Les Augures' consisting of five staves. The notation includes treble and bass clefs, a key signature of one sharp (F#), and various rhythmic values such as sixteenth and thirty-second notes. Fingerings are indicated by numbers 1-5 above or below notes. A 'piano' marking is present in the fifth staff.

Trio tac.

Handwritten musical score for 'Rondeau' consisting of four staves. The notation includes treble and bass clefs, a key signature of one sharp (F#), and a 4/4 time signature. It features complex rhythmic patterns with many sixteenth and thirty-second notes. Fingerings are indicated throughout. A 'Da Capo' marking is at the end of the fourth staff.

Handwritten musical score for 'Entrée' consisting of four staves. The notation includes treble and bass clefs, a key signature of one sharp (F#), and a 4/4 time signature. It features complex rhythmic patterns with many sixteenth and thirty-second notes. Fingerings are indicated throughout. A 'piano' marking is present in the second staff.

La Foye.

Handwritten musical score for 'La Foye' consisting of three staves. The notation includes treble and bass clefs, a key signature of one sharp (F#), and various rhythmic values.

Sarabande

Handwritten musical score for 'Sarabande' consisting of two staves. The notation includes treble and bass clefs, a key signature of one sharp (F#), and various rhythmic values.

Figure

Handwritten musical score for 'Figure' consisting of four staves. The notation includes treble and bass clefs, a key signature of one sharp (F#), and various rhythmic values.



La Joye.

Handwritten musical score for 'La Joye'. It consists of four staves of music. The first staff begins with a treble clef, a key signature of one sharp (F#), and a 2/4 time signature. The notation includes various rhythmic values such as eighth and sixteenth notes, along with rests and bar lines. The piece concludes with a double bar line and repeat dots.

Sarabande.

Handwritten musical score for 'Sarabande'. It consists of two staves of music. The first staff begins with a treble clef, a key signature of one sharp (F#), and a 3/4 time signature. The notation features a mix of eighth and sixteenth notes. The piece ends with a double bar line and repeat dots.

Figure.

Handwritten musical score for 'Figure'. It consists of one staff of music. The staff begins with a treble clef, a key signature of one sharp (F#), and a 2/4 time signature. The notation is primarily composed of quarter and eighth notes.

Capo

Handwritten musical score for 'Capo'. It consists of four staves of music. The first staff begins with a treble clef, a key signature of one sharp (F#), and a 2/4 time signature. The notation includes various rhythmic values and rests. The piece concludes with a double bar line and repeat dots.

La Joye.

Sarabande.



Savotte

en Rondeau

Handwritten musical notation for Savotte en Rondeau, measures 1-12. The piece is in C major and common time. It features a melody with various ornaments and a bass line with figured bass notation. The notation includes treble and bass clefs, a key signature of one sharp (F#), and a common time signature (C). The melody is written on a single staff, and the bass line is on a second staff. The piece concludes with a double bar line and the words 'Da Capo'.

Haute

Handwritten musical notation for Haute, measures 1-12. The piece is in C major and common time. It features a melody with various ornaments and a bass line with figured bass notation. The notation includes treble and bass clefs, a key signature of one sharp (F#), and a common time signature (C). The melody is written on a single staff, and the bass line is on a second staff. The piece concludes with a double bar line.

Handwritten musical notation for Menuet 1, measures 1-12. The piece is in C major and common time. It features a melody with various ornaments and a bass line with figured bass notation. The notation includes treble and bass clefs, a key signature of one sharp (F#), and a common time signature (C). The melody is written on a single staff, and the bass line is on a second staff. The piece concludes with a double bar line.

Handwritten musical notation for Menuet 2 and Menuet 1, measures 1-12. The piece is in C major and common time. It features a melody with various ornaments and a bass line with figured bass notation. The notation includes treble and bass clefs, a key signature of one sharp (F#), and a common time signature (C). The melody is written on a single staff, and the bass line is on a second staff. The piece concludes with a double bar line and the words 'Menuet 2' and 'Menuet 1'.

Handwritten musical notation for Menuet, measures 1-12. The piece is in C major and common time. It features a melody with various ornaments and a bass line with figured bass notation. The notation includes treble and bass clefs, a key signature of one sharp (F#), and a common time signature (C). The melody is written on a single staff, and the bass line is on a second staff. The piece concludes with a double bar line.

Ulver

Handwritten musical notation for Ulver, measures 1-12. The piece is in C major and common time. It features a melody with various ornaments and a bass line with figured bass notation. The notation includes treble and bass clefs, a key signature of one sharp (F#), and a common time signature (C). The melody is written on a single staff, and the bass line is on a second staff. The piece concludes with a double bar line.



Ouverture

1034  
mus 3360/35

Bisson.

19

The image shows a page of handwritten musical notation. At the top, the title 'Ouverture' is written in a cursive hand. To its right, the manuscript number '1034' and 'mus 3360/35' are written. Further right, the name 'Bisson.' is written. In the top right corner, the page number '19' is written. The musical score itself consists of approximately 15 staves of music. The notation includes various note values, rests, and clefs. There are some markings above the staves, possibly indicating fingerings or performance instructions. The paper is aged and shows some staining.



*C.C.*



Les Augures.

Entrée.

Handwritten musical score for 'Les Augures' on the left page. It consists of 13 staves of music. The first staff begins with a treble clef, a key signature of one sharp (F#), and a common time signature (C). The music is written in a cursive style. The word 'Trio' is written across the fifth staff. The word 'Fincedu' is written across the eighth staff. The word 'La Capo' is written across the thirteenth staff, followed by a double bar line. There are various musical notations including notes, rests, and dynamic markings like 'piano'.

Handwritten musical score on the right page. It consists of 13 staves of music. The first staff begins with a treble clef, a key signature of one sharp (F#), and a common time signature (C). The word 'La Foye' is written across the fifth staff. The word 'Sarabande' is written across the eighth staff. The word 'Figue' is written across the tenth staff. The music continues with various notes and rests.



Entrée.

Handwritten musical notation for the first system, consisting of three staves. The top staff is in treble clef with a key signature of one sharp (F#) and a common time signature (C). The middle and bottom staves are in bass clef. The notation includes various rhythmic values, accidentals, and dynamic markings.

Handwritten musical notation for the second system, consisting of three staves. The top staff is in treble clef with a key signature of one sharp (F#) and a common time signature (C). The middle and bottom staves are in bass clef. The notation includes various rhythmic values, accidentals, and dynamic markings.

La Foye

Handwritten musical notation for the third system, consisting of three staves. The top staff is in treble clef with a key signature of one sharp (F#) and a common time signature (C). The middle and bottom staves are in bass clef. The notation includes various rhythmic values, accidentals, and dynamic markings.

Handwritten musical notation for the fourth system, consisting of three staves. The top staff is in treble clef with a key signature of one sharp (F#) and a common time signature (C). The middle and bottom staves are in bass clef. The notation includes various rhythmic values, accidentals, and dynamic markings.

Sarabande

Handwritten musical notation for the fifth system, consisting of three staves. The top staff is in treble clef with a key signature of one sharp (F#) and a common time signature (C). The middle and bottom staves are in bass clef. The notation includes various rhythmic values, accidentals, and dynamic markings.

Handwritten musical notation for the sixth system, consisting of three staves. The top staff is in treble clef with a key signature of one sharp (F#) and a common time signature (C). The middle and bottom staves are in bass clef. The notation includes various rhythmic values, accidentals, and dynamic markings.

Figure

Handwritten musical notation for the seventh system, consisting of three staves. The top staff is in treble clef with a key signature of one sharp (F#) and a common time signature (C). The middle and bottom staves are in bass clef. The notation includes various rhythmic values, accidentals, and dynamic markings.

Handwritten musical notation for the eighth system, consisting of three staves. The top staff is in treble clef with a key signature of one sharp (F#) and a common time signature (C). The middle and bottom staves are in bass clef. The notation includes various rhythmic values, accidentals, and dynamic markings.

Handwritten musical notation for the ninth system, consisting of three staves. The top staff is in treble clef with a key signature of one sharp (F#) and a common time signature (C). The middle and bottom staves are in bass clef. The notation includes various rhythmic values, accidentals, and dynamic markings.

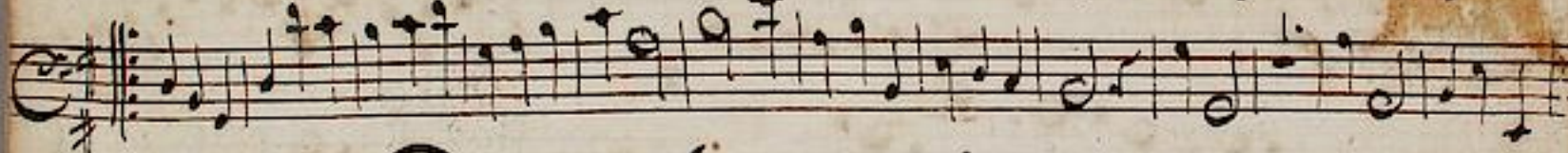
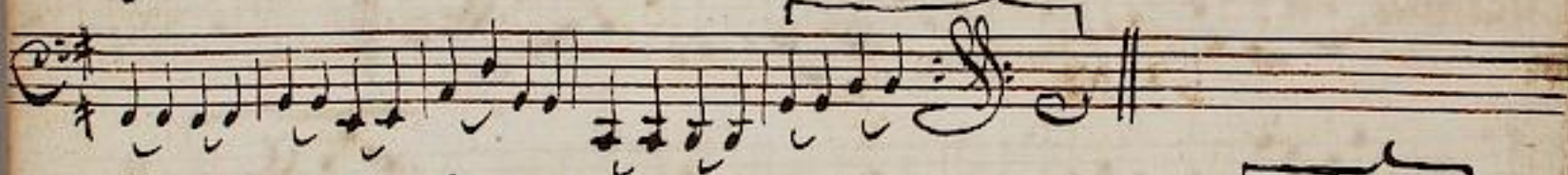
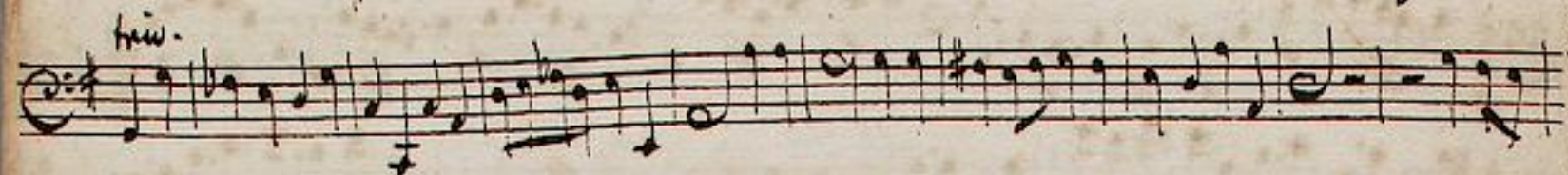
Handwritten musical notation for the tenth system, consisting of three staves. The top staff is in treble clef with a key signature of one sharp (F#) and a common time signature (C). The middle and bottom staves are in bass clef. The notation includes various rhythmic values, accidentals, and dynamic markings.

Handwritten musical notation for the eleventh system, consisting of three staves. The top staff is in treble clef with a key signature of one sharp (F#) and a common time signature (C). The middle and bottom staves are in bass clef. The notation includes various rhythmic values, accidentals, and dynamic markings.

Favite.

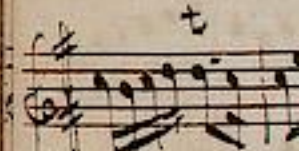
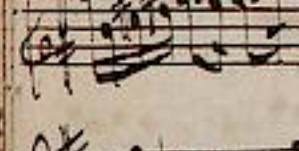
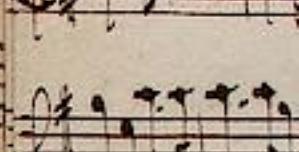


Savotte  
en



Menuet 3. fac. Menuet 1. rep.

Juven





1034  
35  
Jouvert. mus 3360 Hauptbois I. 27



Les Augures.

Handwritten musical notation for the first section of "Les Augures". It consists of four staves of music in G major and common time. The notation includes various note values, rests, and dynamic markings such as *dim.* and *rit.*

Handwritten musical notation for the second section of "Les Augures", labeled "Trio". It consists of three staves of music in G major and common time, featuring a melodic line and a more rhythmic accompaniment.

Handwritten musical notation for the third section of "Les Augures", labeled "Rondeau". It consists of three staves of music in G major and common time, with a repeating melodic motif.

Handwritten musical notation for the fourth section of "Les Augures", consisting of three staves of music in G major and common time.

Handwritten musical notation for the fifth section of "Les Augures", labeled "Da Capo". It consists of one staff of music in G major and common time, ending with a double bar line.

Entrée

Handwritten musical notation for the first section of "Entrée", consisting of two staves of music in G major and common time.

La Foye

Handwritten musical notation for the section "La Foye", consisting of two staves of music in G major and common time.

Saraba

Handwritten musical notation for the section "Saraba", consisting of two staves of music in G major and common time.



Entrée

Handwritten musical score for the 'Entrée' section, consisting of six systems of staves. The notation includes treble and bass clefs, a common time signature (C), and various rhythmic values such as eighth and sixteenth notes. There are several trill ornaments (marked with 't') and a 'Doux' marking above the fourth system. The piece concludes with a double bar line.

La Foye

Handwritten musical score for the 'La Foye' section, consisting of three systems of staves. The notation includes treble and bass clefs, a common time signature (C), and various rhythmic values. The piece concludes with a double bar line.

Sarabance

Handwritten musical score for the 'Sarabance' section, consisting of two systems of staves. The notation includes treble and bass clefs, a 3/4 time signature, and various rhythmic values. The piece concludes with a double bar line.

Figure.





*Figure.*

Handwritten musical notation for the 'Figure' section, consisting of seven staves of music in a single system. The notation includes various note values, rests, and clefs.

*Plainte*

Handwritten musical notation for the 'Plainte' section, consisting of three staves of music.

*Muet*

Handwritten musical notation for the 'Muet' section, consisting of two staves of music.

*Favotte  
en  
Rondeau.*

Handwritten musical notation for the 'Favotte en Rondeau' section, consisting of four staves of music. The notation includes various note values, rests, and clefs.

*Muet*

Handwritten musical notation for the 'Muet' section, consisting of two staves of music.

*Da Capo* //

*Plainte.*



*Sainte.*

Handwritten musical score for the piece "Sainte". It consists of five systems of music, each with a single staff. The notation includes various note values, rests, and bar lines. The first system begins with a treble clef and a common time signature.

*Menuet 1*

Handwritten musical score for "Menuet 1". It consists of three systems of music, each with a single staff. The notation includes a treble clef, a key signature of one sharp (F#), and a 3/4 time signature.

*Menuet 2*

Handwritten musical score for "Menuet 2". It consists of two systems of music, each with a single staff. The notation includes a treble clef, a key signature of one sharp (F#), and a 3/4 time signature.

*ans //*

Handwritten musical score for "Menuet 1. rep.". It consists of one system of music with a single staff. The notation includes a treble clef, a key signature of one sharp (F#), and a 3/4 time signature.

Handwritten musical score for "Menuet 3. fac. // Menuet 1. rep. //". It consists of one system of music with a single staff. The notation includes a treble clef, a key signature of one sharp (F#), and a 3/4 time signature.

*Sainte.*





Overture. mus 1034/35 Hautbois 2. 32

Handwritten musical score for Overture, Hautbois 2, page 32. The score consists of 14 staves of music in G major and common time. The notation includes various rhythmic values, slurs, and dynamic markings such as 'p' and 'f'. The piece concludes with a double bar line and a final cadence.





Les Augures.

The left page of the manuscript contains the musical score for 'Les Augures'. It is written in G major (one sharp) and common time (C). The score consists of 14 staves of music. The first staff begins with a treble clef and a common time signature. The second staff has a repeat sign. The third staff has a common time signature. The fourth staff has a common time signature and a 'piano' marking. The fifth staff is labeled 'Trio' and has a common time signature. The sixth staff has a common time signature. The seventh staff has a common time signature. The eighth staff is labeled 'Rondeau' and has a 3/4 time signature. The ninth staff has a common time signature and a 'trio' marking. The tenth staff has a common time signature and a '12.' marking. The eleventh staff has a common time signature and a 'trio' marking. The twelfth staff has a common time signature. The thirteenth staff has a common time signature. The fourteenth staff is labeled 'La Capri' and has a common time signature. The score is written in a clear, elegant hand.

Entrée

The right page of the manuscript contains the musical score for 'Entrée'. It is written in G major (one sharp) and common time (C). The score consists of 14 staves of music. The first staff begins with a treble clef and a common time signature. The second staff has a common time signature. The third staff has a common time signature. The fourth staff has a common time signature. The fifth staff has a common time signature. The sixth staff has a common time signature. The seventh staff has a common time signature. The eighth staff has a common time signature. The ninth staff has a common time signature. The tenth staff has a common time signature. The eleventh staff has a common time signature. The twelfth staff has a common time signature. The thirteenth staff has a common time signature. The fourteenth staff has a common time signature. The score is written in a clear, elegant hand.



Entrée.

Handwritten musical score for 'Entrée'. The score is written on ten staves. The first staff is a treble clef with a key signature of one sharp (F#) and a common time signature (C). The music consists of a series of eighth and sixteenth notes, with some rests and dynamic markings. The notation is in a cursive, historical style. There are some markings like 'Cresc.' and 'Dim.' visible on the staves.

La Joye.

Handwritten musical score for 'La Joye'. The score is written on three staves. The first staff is a treble clef with a key signature of one sharp (F#) and a 2/4 time signature. The music is characterized by a rhythmic pattern of eighth and sixteenth notes, with some rests and dynamic markings. The notation is in a cursive, historical style.

Sarabance.

Handwritten musical score for 'Sarabance'. The score is written on three staves. The first staff is a treble clef with a key signature of one sharp (F#) and a 3/4 time signature. The music consists of a series of eighth and sixteenth notes, with some rests and dynamic markings. The notation is in a cursive, historical style.

Figure.





*Figure.*

Handwritten musical score for 'Figure' in G major, 2/4 time. It consists of eight staves of music. The notation includes treble clef, a key signature of one sharp (F#), and a common time signature (C). The music features a variety of note values, including eighth and sixteenth notes, and rests. There are some decorative flourishes and a double bar line near the end of the piece.

*Savotte  
en  
Londreau.*

Handwritten musical score for 'Savotte en Londreau' in G major, 2/4 time. It consists of three staves of music. The notation includes treble clef, a key signature of one sharp (F#), and a common time signature (C). The music features a variety of note values, including eighth and sixteenth notes, and rests. There are some decorative flourishes and a double bar line near the end of the piece. The word 'Da Capo' is written at the end of the third staff.

*Plainte.*

Handwritten musical score for 'Plainte' in G major, 2/4 time. It consists of five staves of music. The notation includes treble clef, a key signature of one sharp (F#), and a common time signature (C). The music features a variety of note values, including eighth and sixteenth notes, and rests.

*Menuet  
I.*

Handwritten musical score for 'Menuet I' in G major, 3/4 time. It consists of three staves of music. The notation includes treble clef, a key signature of one sharp (F#), and a 3/4 time signature. The music features a variety of note values, including eighth and sixteenth notes, and rests.

*Plainte.*



Plainte.

Handwritten musical notation on the left side of the page, corresponding to the 'Plainte' section. It consists of several staves of music in a single system.

Handwritten musical notation for the 'Plainte' section on the right side of the page. It consists of several staves of music in a single system, including a treble clef and a common time signature.

Menuet

Handwritten musical notation on the left side of the page, corresponding to the 'Menuet' section. It consists of several staves of music in a single system.

Handwritten musical notation for the 'Menuet' section on the right side of the page. It includes a first ending ('1. Ende') and a second ending ('2. Ende'). The notation is in a single system with multiple staves.

Capo //

// Men. 1. rep. // Menuet 3. fac. //

// Menuet 1. rep. //

Plainte.

