

Telemann, Georg Philipp (1681-1767) BRD DS Mus.ms 1042/31

Sonata/a/2 Violin/Viola/e/Cembalo./[Incipit]/Telemann/  
(F-dur)



Vivace 3/4 F-dur - An-  
dante 3/4 d-moll -  
Allegro C F-dur.

Ms.1.H.18.Jh. (Graupner). 35 x 21,5 cm.

4 St.: vl 1,2, vla, cembalo (bez.). 1,1,1,2 Bl.

Alte Sign.: 619. 3775/31.

Graener F5

TWV 43 F 3

1042  
~~3775~~, 31

1

Big

Sonata

a

2 Violin

Viola

e

Cembalo.

fol. (5)



*pp*

*Plemer*

Großherzoglich  
Hessische  
Bibliothek

Sonata.

Embals.

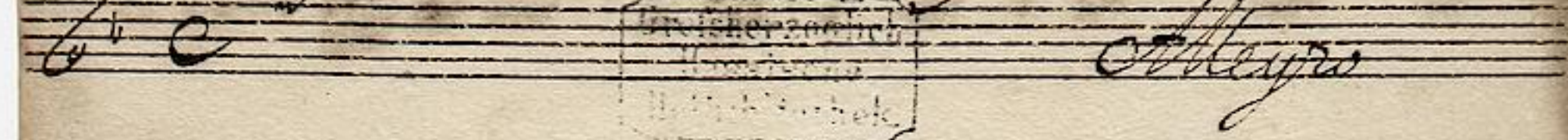
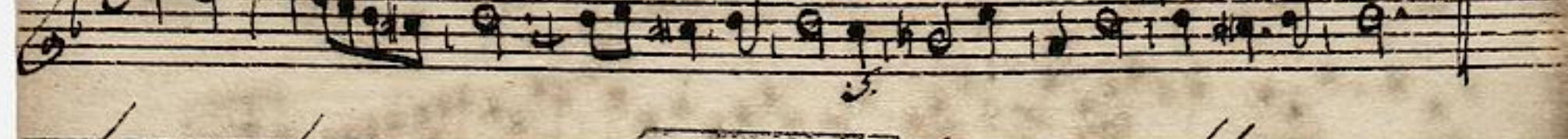
Handwritten musical score for the first section of a Sonata, Embals. It consists of ten staves of music in a single system. The notation includes treble clefs, a key signature of one flat (B-flat), and a common time signature (C). The music features a variety of note values, including eighth and sixteenth notes, and rests. Performance markings such as "Vivace.", "pian.", and "rit." are present throughout the section.

Handwritten musical score for the second section of a Sonata, Embals. It consists of seven staves of music in a single system. The notation includes treble clefs, a key signature of one flat (B-flat), and a common time signature (C). The music features a variety of note values, including eighth and sixteenth notes, and rests. Performance markings such as "Andante." are present throughout the section.

A handwritten musical score on 15 staves. The notation is in a historical style, featuring a treble clef, a key signature of one flat (B-flat), and a common time signature (C). The music consists of a single melodic line with various rhythmic values, including eighth and sixteenth notes, and rests. There are several slurs and accents throughout the piece. The final measure of the score is marked with a double bar line and a large, dense scribble, likely indicating the end of the piece or a correction.

Sonata. 1042/31

Violino 1mo. 3



Deutsches  
Musikarchiv  
Landesbibliothek

Meyer

*Allegro*



*Allegro.*

Handwritten musical score on aged paper, featuring 14 staves of music in a single system. The notation includes various note values, rests, and dynamic markings. The paper shows signs of age, including foxing and staining. The word "Allegro." is written in cursive at the beginning of the first staff. The music concludes with a double bar line and a dense scribble of ink on the final staff.



*Allegro*

*pian.* *f* *pian.* *f* *pian.*

*Andante*

*f*

F # 9 9 7

*Adagio*

Grafshertzoglich Hessische Hofbibliothek

*Allegro*

The image shows a page of handwritten musical notation on aged, yellowed paper. The notation is arranged in 14 horizontal staves. The first staff begins with a treble clef, a common time signature (C), and the tempo marking "Allegro". The music consists of a single melodic line with various note values, including eighth and sixteenth notes, and rests. There are several dynamic markings, such as "p" (piano) and "f" (forte), scattered throughout the score. The notation is dense and fills most of the page, ending with a large, dark scribble on the 14th staff. The paper shows signs of age, including foxing and some staining.