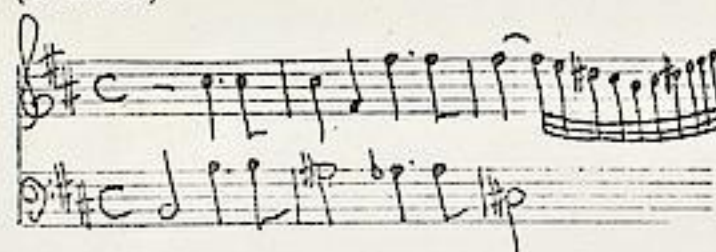


Telemann, Georg Philipp (1681-1767)

BRD DS Mus.ms 1034/74

Ouverture/a/2 Violin/Viola/e/Cembalo./[Incipit]/Telemann/  
(h-moll)



8 Sätze.  
vgl. Hoffmann.

Ms. 1. H. 18. Jh. (Graupner). 34,5 x 21,5 cm.

6 St.: vl 1(2x), 2, vla, vlne, cembalo(unbez.).  
je 2 Bl.

Alte Sign.: 3360.

2. Violinstimme von der Hand Endlers.

Hoffmann, h 2.

24

3360/74  
1034

1

# Overture

a

2 Violin

Viola

e

frc(12)

Cembalo.



pp

Seeman

Overture.

Violine.

The Overture section consists of ten staves of handwritten musical notation. It begins with a treble clef, a key signature of one sharp (F#), and a common time signature (C). The music is characterized by a melodic line with frequent sixteenth-note runs and a more rhythmic accompaniment. The notation includes various note values, rests, and dynamic markings. The piece concludes with a double bar line and a fermata.

Air.

The Air section consists of four staves of handwritten musical notation. It begins with a treble clef, a key signature of one sharp (F#), and a common time signature (C). The melody is more lyrical and features a prominent eighth-note pattern. The accompaniment is simpler, often consisting of quarter and eighth notes. The section ends with a double bar line and a fermata.

Londrau.

Handwritten musical notation for 'Londrau' on six staves. The notation includes various note values, rests, and bar lines. The music is written in a cursive style typical of 18th-century manuscripts. The first staff begins with a treble clef and a key signature of one sharp (F#). The piece concludes with a double bar line on the sixth staff.

Handwritten musical notation for 'Lotte' and 'Entrée' on seven staves. The notation includes various note values, rests, and bar lines. The music is written in a cursive style typical of 18th-century manuscripts. The first staff begins with a treble clef and a key signature of one sharp (F#). The piece concludes with a double bar line on the seventh staff.

fourney



Air.

*en*  
Londres.

Meneret

Meneret. 2.

Figure.



Overture.

<sup>1034</sup>  
3360/74

Violino 1mo. 2

The image shows a page of handwritten musical notation for the first violin part of an overture. The music is written on 14 staves. The key signature is one sharp (F#), and the time signature is 3/4. The notation includes various rhythmic values such as eighth and sixteenth notes, as well as rests. There are some markings above the first few staves, including a circled '1034' and the number '3360/74'. The paper is aged and has some discoloration.





*Entrée*

Handwritten musical score for 'Entrée' in G major, 2/4 time. The score consists of five systems, each with a vocal line and a piano accompaniment line. The music features a mix of quarter, eighth, and sixteenth notes, with some rests and dynamic markings.

*Air en l'oncleau*

Handwritten musical score for 'Air en l'oncleau' in G major, 2/4 time. The score consists of four systems, each with a vocal line and a piano accompaniment line. The music is characterized by a steady eighth-note accompaniment and a vocal line with various rhythmic values.

*Menuet 1.*

Handwritten musical score for 'Menuet 1.' in G major, 3/4 time. The score consists of two systems, each with a single melodic line. The music is a simple, elegant minuet.

*Menuet 2.*

Handwritten musical score for 'Menuet 2.' in G major, 3/4 time. The score consists of two systems, each with a single melodic line. The music is a simple, elegant minuet.

Continuation of the handwritten musical score for 'Menuet 2.', showing the final few notes and a decorative flourish.

*Handwritten signature*





Handwritten musical score on seven staves. The notation includes treble clefs, a key signature of one sharp (F#), and a time signature of 8/8. The music features a variety of rhythmic patterns, including eighth and sixteenth notes, and rests. The seventh staff concludes with a large, decorative flourish.

Ten blank musical staves on aged paper.

Overture <sup>3360/74</sup> <sub>1034</sub> Violino Primo <sup>4</sup>

This image shows a page of handwritten musical notation for a violin part. The score is written on 15 staves. The first staff begins with a treble clef, a common time signature (C), and a key signature of one sharp (F#). The notation is dense, featuring many sixteenth and thirty-second notes, often beamed together in groups. There are several dynamic markings, including 'p' (piano) and 'f' (forte), and various articulation marks like slurs and accents. The paper is aged and shows some staining, particularly a large brownish spot on the left side. The handwriting is in a cursive style typical of 18th or 19th-century manuscripts.



Air.

Sonata.

Course.

Entrée.

Handwritten musical notation for the 'Entrée' section, consisting of five staves of music in a single system. The notation includes various note values, rests, and clefs.

Fin  
en Louveau

Handwritten musical notation for the 'Fin en Louveau' section, consisting of four staves of music in a single system.

Menuet.  
Alternatif.

Handwritten musical notation for the 'Menuet. Alternatif.' section, consisting of two staves of music in a single system.

Menuet. 2.

Handwritten musical notation for the 'Menuet. 2.' section, consisting of three staves of music in a single system.

Journel

Figur.

Handwritten musical score for a single instrument, likely a lute or guitar, in 3/4 time. The score consists of eight staves of music. The notation includes various note values, rests, and ornaments. The paper is aged and shows some staining.

*[Handwritten signature]*



Overture. 3360/74  
1034

Violino 2do. 6

Handwritten musical score for Violino 2do. 6, Overture. 3360/74. The score consists of 15 staves of music in G major and 3/4 time. It features various rhythmic patterns, including eighth and sixteenth notes, and rests. A double bar line with repeat dots is present on the third staff. The manuscript is written in black ink on aged paper.



*Air*  $\frac{3}{2}$

*Rondeau*

*Lowre*  $\frac{3}{4}$

*Entre*

*Air en Rondeau*

*Musette*

*Musette*

*Fig.*





*Andante*

Ouverture. 3360/74  
1034

Viola.

8

Handwritten musical score for Viola, Overture section, measures 1-14. The music is written on ten staves in G major (one sharp) and 3/4 time. It features a variety of note values including quarter, eighth, and sixteenth notes, as well as rests and dynamic markings. The notation is characteristic of the 18th or 19th century.

Air

Handwritten musical score for Viola, Air section, measures 15-18. The music is written on four staves in G major and 3/4 time. It begins with a double bar line and a repeat sign. The notation includes quarter and eighth notes, with some slurs and dynamic markings. The section concludes with a double bar line and a fermata.

Rondeau.



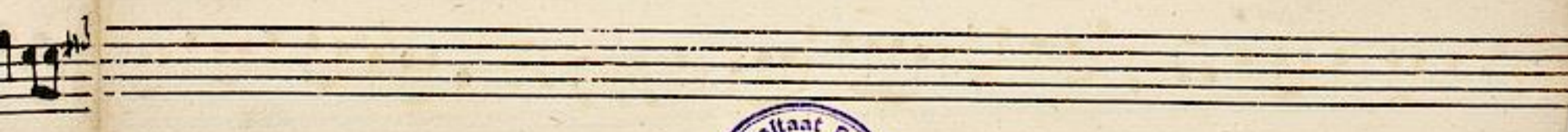
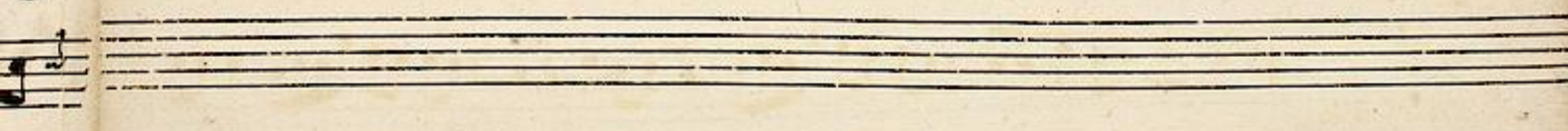
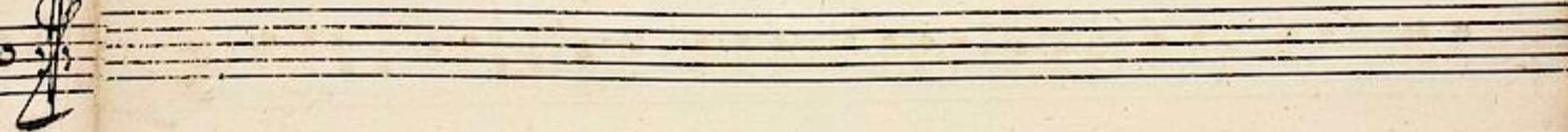
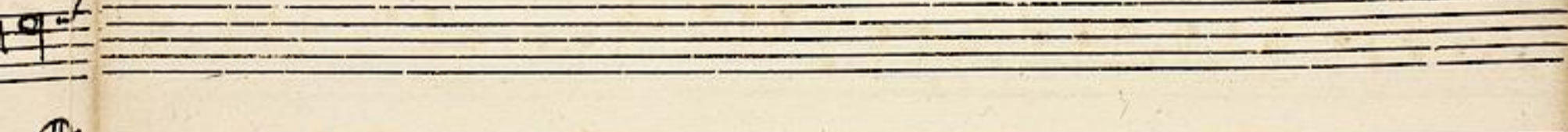
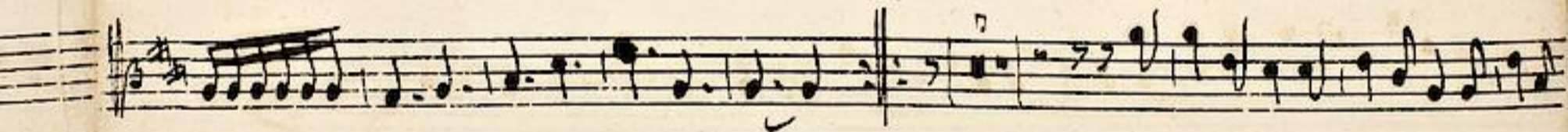
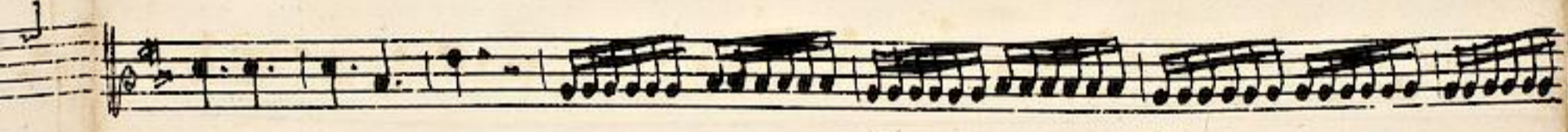
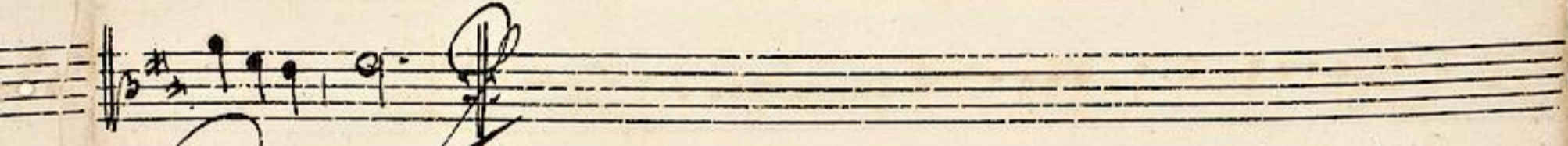
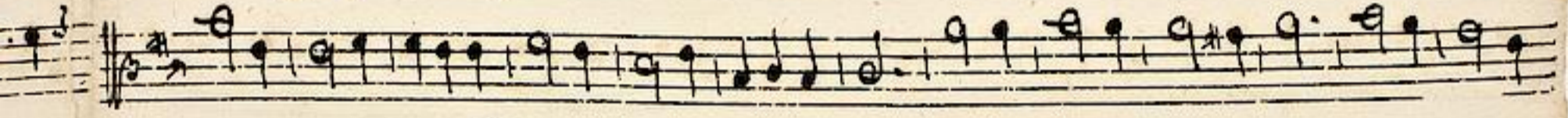
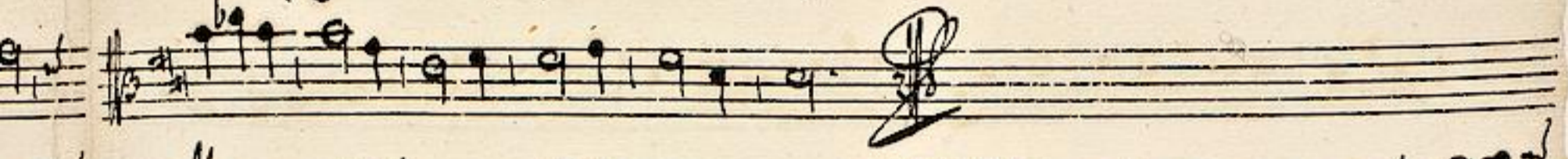
*Rondeau*

*Loure*

*Entrée*

*Air en Rondeau*





1034  
3360/74  
Overture.

Embalo.

The Overture section consists of 12 staves of handwritten musical notation. It begins with a treble clef, a key signature of one sharp (F#), and a common time signature (C). The music is characterized by a complex, rhythmic texture with many sixteenth and thirty-second notes, often beamed together. There are several dynamic markings, including 'f' (forte) and 'p' (piano), and various articulation marks like slurs and accents. The notation is dense and fills most of the staves.

*Air*

The Air section consists of 4 staves of handwritten musical notation. It begins with a treble clef, a key signature of one sharp (F#), and a 3/2 time signature. The music is more melodic and spacious than the Overture, featuring a prominent melody in the upper voice with a steady accompaniment in the lower voice. There are several dynamic markings, including 'f' and 'p', and a final double bar line with a repeat sign.

*Rondieu*

Musical notation staff 1

Musical notation staff 2

Musical notation staff 3

Musical notation staff 4

Musical notation staff 5

Musical notation staff 6

*Loure*

Musical notation staff 7

Musical notation staff 8

*Entrée*

Musical notation staff 9

Musical notation staff 10

Musical notation staff 11

Musical notation staff 12

Musical notation staff 13



*Air en Rondeau*

*Menuet*

*Menuet*

*Fug*

This page contains handwritten musical notation for three pieces. The first piece, 'Air en Rondeau', is written on five staves with a treble clef, a key signature of one sharp (F#), and a common time signature (C). The second piece, 'Menuet', is written on two staves with a treble clef, a key signature of one sharp, and a 3/4 time signature. The third piece, 'Fug', is written on five staves with a treble clef, a key signature of one sharp, and a 2/4 time signature. The notation includes various note values, rests, and bar lines.

