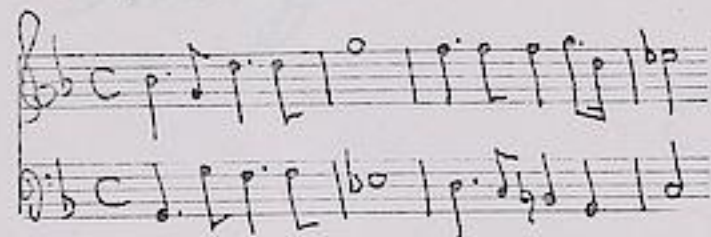


Telemann, Georg Philipp (1681-1767)

BRD DS Mus.ms 1034/87

G.b./OUVERTURE./à/2 Violons,/Viole,/é/Basse./Telemann./[Incipit]/ (g-moll)



5 Sätze.
vgl. Hoffmann.

Ms. 1. H. 18. Jh. (J. S. Endler). 34,5 x 21 cm.

6 St.: dessus 1(2x), 2, taille, b(2x). je 2 Bl.

Alte Sign.: 3360.

Hoffmann, g 5.

37.

S. b.

~~3360~~/87
1034

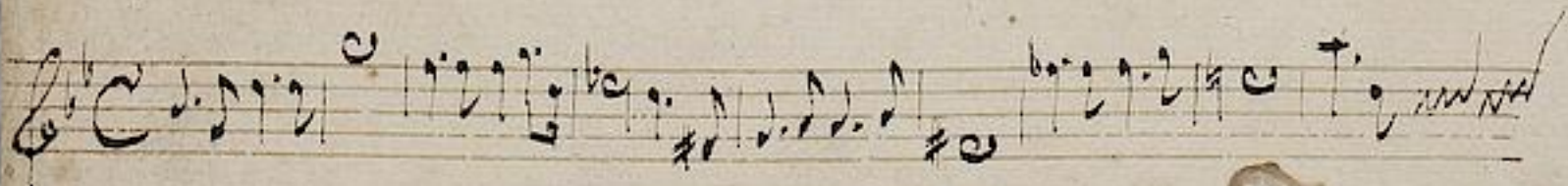
Ouverture.

^a
2 Violons,

Viola,

^e
Basse.

Telemann.



Overture. 3360/84
1034

Basse.

1

Finis.



Loure.

Handwritten musical score for 'Loure'. It consists of seven staves of music. The first staff begins with a treble clef, a key signature of one sharp (F#), and a 2/4 time signature. The notation includes various note values, rests, and dynamic markings. The piece concludes with a double bar line and repeat dots.

Bourée

Handwritten musical score for 'Bourée'. It consists of four staves of music. The first staff begins with a treble clef, a key signature of one sharp (F#), and a 2/4 time signature. The notation includes various note values, rests, and dynamic markings. The piece concludes with a double bar line and repeat dots.

Bourée

Handwritten musical score for 'Bourée'. It consists of three staves of music. The first staff begins with a treble clef, a key signature of one sharp (F#), and a 2/4 time signature. The notation includes various note values, rests, and dynamic markings. The piece concludes with a double bar line and repeat dots.

Mennet.

Mennet

Handwritten musical notation for the first piece, 'Mennet'. It consists of three staves. The first staff begins with a treble clef, a key signature of one flat (B-flat), and a 3/4 time signature. The music features a series of eighth and sixteenth notes, with some rests. The second and third staves continue the melody, with the third staff ending in a double bar line.

Mennet

Handwritten musical notation for the second piece, 'Mennet'. It consists of three staves. The first staff begins with a treble clef, a key signature of one flat (B-flat), and a 3/4 time signature. The music is characterized by a steady eighth-note rhythm. The second and third staves continue the piece, with the third staff ending in a double bar line.

Air Anglaise.

Handwritten musical notation for the third piece, 'Air Anglaise'. It consists of three staves. The first staff begins with a treble clef, a key signature of one flat (B-flat), and a 2/4 time signature. The music features a mix of eighth and sixteenth notes. The second and third staves continue the melody, with the third staff ending in a double bar line.



Mennet.

Ouverture. 3360/84
1034

Premier Dessus. 3

Handwritten musical score for Premier Dessus, page 3. The score consists of 14 staves of music in G major and 3/4 time. It features various rhythmic patterns, including eighth and sixteenth notes, and rests. The notation includes clefs, key signatures, and dynamic markings. The piece concludes with a double bar line and a fermata.

Fin.

Loure.

Handwritten musical score for 'Loure'. The piece is written on six staves. The first staff begins with a treble clef, a key signature of one sharp (F#), and a common time signature (C). The notation includes various rhythmic values such as eighth and sixteenth notes, as well as rests. The piece concludes with a double bar line and repeat dots.

Bourée.

Handwritten musical score for 'Bourée'. The piece is written on three staves. It begins with a treble clef, a key signature of one sharp (F#), and a common time signature (C). The notation features a mix of eighth and sixteenth notes. The piece ends with a double bar line and repeat dots.

Bourée

Handwritten musical score for a second 'Bourée'. The piece is written on four staves. It begins with a treble clef, a key signature of one sharp (F#), and a common time signature (C). The notation is characterized by a dense pattern of sixteenth notes. The piece concludes with a double bar line and repeat dots.

Musuet.

Menuet

Handwritten musical score for a Minuet. The score is written on ten staves. The first staff begins with a treble clef, a key signature of one sharp (F#), and a 3/4 time signature. The notation includes various note values, rests, and bar lines. The piece concludes with a double bar line and a repeat sign.

Air Anglaise

Handwritten musical score for an Air Anglaise. The score is written on five staves. It begins with a treble clef, a key signature of one sharp (F#), and a 2/4 time signature. The notation features a mix of eighth and sixteenth notes, with some slurs and ornaments. The piece ends with a double bar line and a repeat sign.



Menuet.

Ouverture. 3360/84
1034

Premier Dessus. 5

Handwritten musical score for Premier Dessus, page 5. The score consists of 15 staves of music in G major, 3/4 time. It features a variety of rhythmic patterns, including eighth and sixteenth notes, and rests. The notation is in a clear, cursive hand typical of 18th-century manuscripts. The piece concludes with a double bar line and a repeat sign.

Fin.



Loure.

Handwritten musical score for 'Loure'. It consists of six staves of music. The first staff begins with a treble clef and a key signature of one sharp (F#). The notation includes various note values, rests, and dynamic markings such as 'tr' (trill) and 'p' (piano). The piece concludes with a double bar line and a fermata.

Bourée 1.

Handwritten musical score for 'Bourée 1.'. It consists of four staves of music. The first staff begins with a treble clef and a common time signature (C). The notation includes various note values, rests, and dynamic markings such as 'tr' and 'p'. The piece concludes with a double bar line and a fermata.

Bourée 2.

Handwritten musical score for 'Bourée 2.'. It consists of four staves of music. The first staff begins with a treble clef and a common time signature (C). The notation includes various note values, rests, and dynamic markings such as 'tr' and 'p'. The piece concludes with a double bar line and a fermata.

Momet.

Mennet

1. *Mennet*

2. *Mennet*

Air Angloise.



Mennet.

Overture 3360/84
1034 Second Bass.

Fin.



Menuet.

Handwritten musical score for a Minuet, consisting of five staves of music. The notation includes treble clefs, a key signature of one sharp (F#), and a 3/4 time signature. The music features a variety of note values, including eighth and sixteenth notes, and rests.

Bourée
1.

Handwritten musical score for the first Bourée, consisting of four staves of music. The notation includes treble clefs, a key signature of one sharp (F#), and a 3/4 time signature. The music features a variety of note values, including eighth and sixteenth notes, and rests.

Bourée
2.

Handwritten musical score for the second Bourée, consisting of three staves of music. The notation includes treble clefs, a key signature of one sharp (F#), and a 3/4 time signature. The music features a variety of note values, including eighth and sixteenth notes, and rests.

Mouet.

Menuet i.

Handwritten musical notation for the first piece, *Menuet i.* The notation is written on a system of five staves. The first staff begins with a treble clef and a 3/4 time signature. The music consists of a series of eighth and sixteenth notes, with some rests. The piece concludes with a double bar line and a repeat sign.

Menuet 2.

Handwritten musical notation for the second piece, *Menuet 2.* The notation is written on a system of five staves. The first staff begins with a treble clef and a 3/4 time signature. The music consists of a series of eighth and sixteenth notes, with some rests. The piece concludes with a double bar line and a repeat sign.

Air Anglaise.

Handwritten musical notation for the third piece, *Air Anglaise.* The notation is written on a system of five staves. The first staff begins with a treble clef and a 2/4 time signature. The music consists of a series of eighth and sixteenth notes, with some rests. The piece concludes with a double bar line and a repeat sign.



Menuet.

Ouverture. 3360/84
1034

Taille.

9

The image shows a page of handwritten musical notation. It begins with a treble clef and a common time signature (C). The notation is written in a cursive hand. The first staff contains the beginning of the piece, including a key signature change to one sharp (F#). The music consists of various note values, rests, and dynamic markings. There are several measures with slurs and ties. The notation ends with a double bar line and a repeat sign. The paper shows signs of age, with some staining and discoloration.

Fin.

Loure.

Handwritten musical notation for the piece 'Loure'. It consists of seven staves of music. The first staff begins with a treble clef, a key signature of one sharp (F#), and a common time signature (C). The notation includes various note values, rests, and accidentals, with a repeat sign at the end of the first section.

Bourée

Handwritten musical notation for the piece 'Bourée'. It consists of four staves of music. The first staff begins with a treble clef, a key signature of one sharp (F#), and a common time signature (C). The notation includes various note values, rests, and accidentals, with a repeat sign at the end of the first section.

Bourée
2.

Handwritten musical notation for the second 'Bourée' piece. It consists of three staves of music. The first staff begins with a treble clef, a key signature of one sharp (F#), and a common time signature (C). The notation includes various note values, rests, and accidentals, with a repeat sign at the end of the first section.

Musquet.

Mennet 1.

Handwritten musical notation on the left margin.

Handwritten musical notation on the first staff.

Handwritten musical notation on the second staff.

Mennet 2.

Handwritten musical notation on the left margin.

Handwritten musical notation on the third staff.

Handwritten musical notation on the fourth staff.

Air Angloise.

Handwritten musical notation on the left margin.

Handwritten musical notation on the fifth staff.

Handwritten musical notation on the sixth staff.

Empty musical staff.

Empty musical staff.

Empty musical staff.

Empty musical staff.

Empty musical staff.

Empty musical staff.

Empty musical staff.

Empty musical staff.

Mennet.



A handwritten musical score for Bass, consisting of 15 staves of music. The notation is in a cursive style, typical of 18th or 19th-century manuscripts. The score begins with a treble clef and a common time signature (C). The music features a variety of rhythmic patterns, including eighth and sixteenth notes, and rests. A double bar line with a repeat sign is visible on the third staff. The piece concludes with a final cadence on the fifteenth staff.

Source.

Soupe

Handwritten musical score for 'Soupe'. The piece is written on six staves. The first staff begins with a treble clef, a key signature of one sharp (F#), and a 4/4 time signature. The notation includes various note values, rests, and dynamic markings such as 'p' and 'f'. The piece concludes with a double bar line and repeat signs.

Bourée
1.

Handwritten musical score for 'Bourée' (1.). The piece is written on four staves. It begins with a treble clef, a key signature of one sharp (F#), and a 2/4 time signature. The notation features a mix of eighth and sixteenth notes, with some slurs and dynamic markings. The piece ends with a double bar line and repeat signs.

Bourée
2.

Handwritten musical score for 'Bourée' (2.). The piece is written on four staves. It begins with a treble clef, a key signature of one sharp (F#), and a 2/4 time signature. The notation is characterized by a steady eighth-note rhythm. There are some red annotations, including a wavy line above the second staff and a '2' below the third staff. The piece concludes with a double bar line and repeat signs.

Mennet

Handwritten musical notation for the first piece, 'Mennet'. It consists of three staves. The first staff begins with a treble clef, a key signature of one flat (B-flat), and a 3/4 time signature. The music is written in a cursive hand with various note values and rests. The second and third staves continue the piece, with the third staff ending in a double bar line.

Mennet 2.

Handwritten musical notation for the second piece, 'Mennet 2.'. It consists of three staves. The first staff begins with a treble clef, a key signature of one flat (B-flat), and a 3/4 time signature. The music is written in a cursive hand with various note values and rests. The second and third staves continue the piece, with the third staff ending in a double bar line.

Air

Andante.

Handwritten musical notation for the third piece, 'Air'. It consists of three staves. The first staff begins with a treble clef, a key signature of one flat (B-flat), and a 2/4 time signature. The music is written in a cursive hand with various note values and rests. The second and third staves continue the piece, with the third staff ending in a double bar line.

