

Telemann, Georg Philipp (1681-1767)

BRD DS Mus.ms 1034/83

Ouverture/a/2 Violin/Viola/e/Cembalo/Telemann./[Incipit]/
(G-dur)



8 Sätze.
vgl. Hoffmann.

Ms. l. H. 18. Jh. (Graupner). 35 x 21,5 cm.

5 St.: vl 1, 2, vla, vlne, cembalo (unbez.) je 2 Bl.

Alte Sign.: 3360.

Hoffmann, G 11.

33.

1034

1

3360/83

Overture
a

z Violin

Viola

e

Contra

fol (10)

Telemann.



Ouverture.

Cembalo.

The Overture section consists of 14 staves of handwritten musical notation. The notation is written in a cursive hand on aged paper. It begins with a treble clef and a key signature of one sharp (F#). The music features a variety of rhythmic patterns, including eighth and sixteenth notes, and rests. There are several dynamic markings, such as 'p' (piano) and 'f' (forte), and articulation marks like slurs and accents. The piece concludes with a double bar line and a final cadence.

Preludio

Andante.

The Preludio section consists of two staves of handwritten musical notation. It begins with a treble clef and a key signature of one sharp (F#). The music is characterized by a slower tempo, indicated by the 'Andante' marking. It features a simple, melodic line with a few rests and a final cadence.

Musical staff with handwritten notes and clef.

Musical staff with handwritten notes, clef, and markings *pp.* and *rit.*

Musical staff with the word *Aria* written in cursive, followed by notes and the marking *allegro*.

Musical staff with handwritten notes and clef.

Musical staff with handwritten notes and clef.

Musical staff with handwritten notes and clef.

Musical staff with the word *Aria* written in cursive, followed by notes and the marking *allegro*.

Musical staff with handwritten notes and clef.

Musical staff with handwritten notes and clef.

Musical staff with the word *Aria* written in cursive, followed by notes and the marking *trave*.

Musical staff with handwritten notes and clef.

Musical staff with handwritten notes and clef.

Musical staff with handwritten notes and clef.

Musical staff with the word *Aria* written in cursive, followed by the number 4 and a clef.

Musical staff with the word *Aria* written in cursive, followed by the number 5 and a clef.



Aria *presto*

Aria *Tempo & Movimento*

Aria

Couverture.

1034
3360/83

Violino 1mo. 2

The image shows a page of handwritten musical notation for the first violin part of an overture. The score is written on 18 staves, each with a treble clef and a key signature of one sharp (F#). The music is in common time (C). The notation includes various rhythmic values, including eighth and sixteenth notes, and rests. There are several dynamic markings: *Handb.* (Handwritten), *fous.* (f), and *Handb. fous.* (Handwritten forte). The paper is aged and shows some wear, particularly at the edges.



Preludio
4/4
Andante

pp. *f.*

Aria
1.
alleg.

Aria
2.
Alto.

Aria
3.
Alto.

Handwritten musical score on aged paper, featuring multiple systems of staves. The notation includes treble and bass clefs, various time signatures, and dynamic markings. The word "Aria" is written in cursive at the beginning of several sections. The tempo marking "affectuoso" is present in the first system, "poco" in the second, and "tempo di meno" in the third. A "Doux" marking is visible in the fourth system. The score concludes with a double bar line and a decorative flourish.



Overture

3360/83
1034

Violino 2do. 4

Handwritten musical score for Violino 2do. 4, Overture. The score consists of 14 staves of music in G major, 4/4 time. It features various rhythmic patterns, including eighth and sixteenth notes, and rests. Performance markings such as "Haut.", "fous.", and "ff." are present throughout the piece.

Preudio



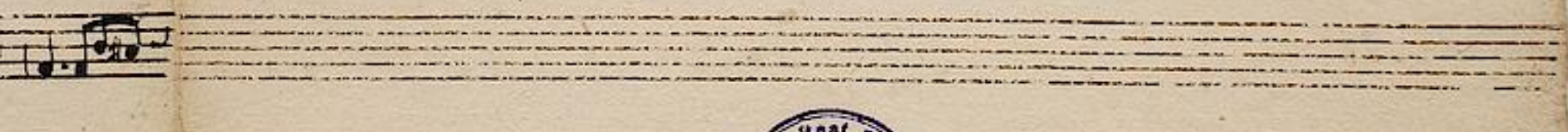
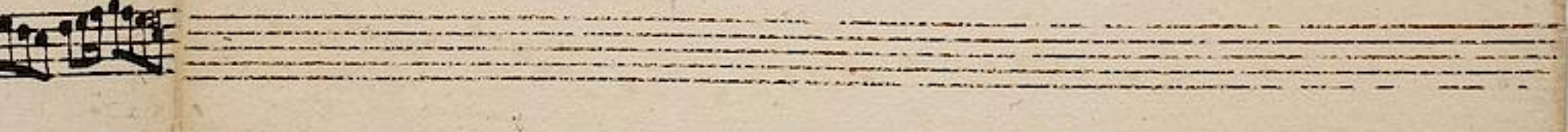
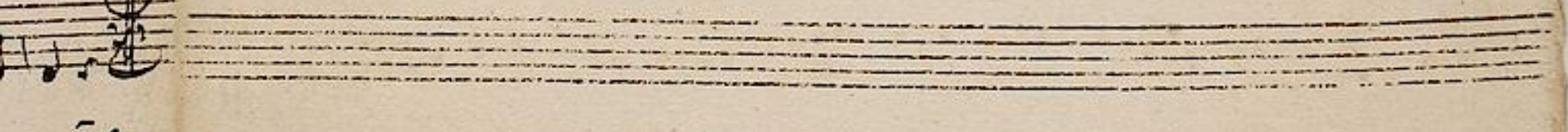
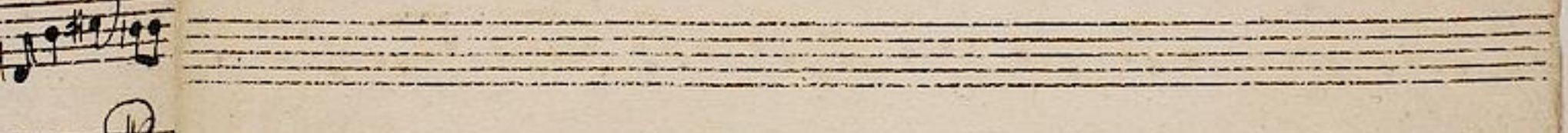
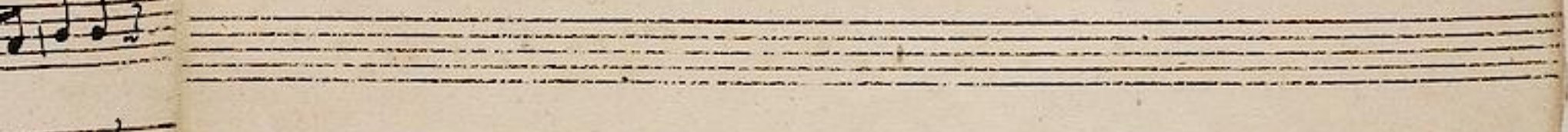
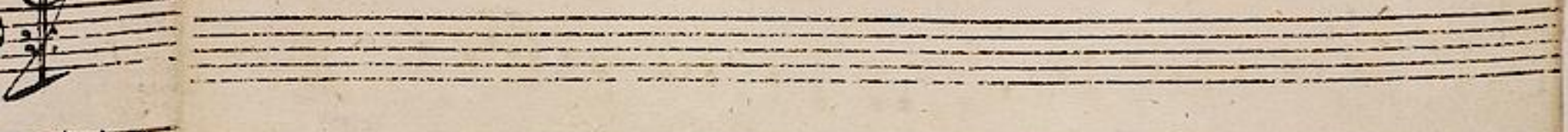
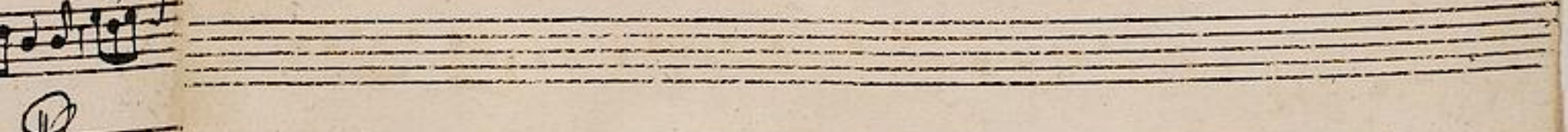
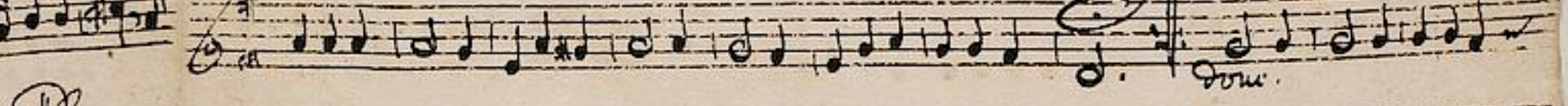
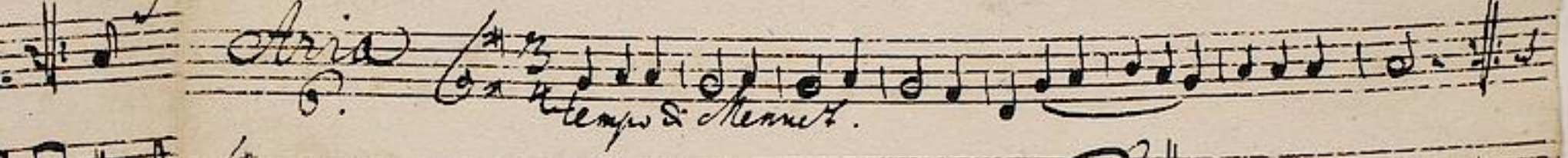
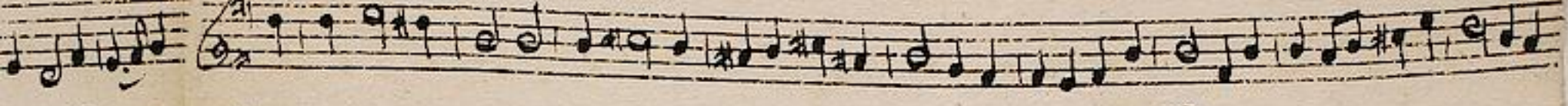
Preludio *Siciliana.*

Aria *1.* *pp.* *f*

Aria *2.* *alleg.*

Aria *3.* *vivace.*

Aria *4.* *affettuoso*



Overture.

3360/83
1034

Viola. 6

Handwritten musical score for Viola, Overture section, consisting of 12 staves of music. The notation includes various note values, rests, and dynamic markings.

Reclama

Siciliana

Handwritten musical score for Viola, Reclama section, consisting of 4 staves of music. The notation includes various note values, rests, and dynamic markings.

pp. *f*



Aria 1. *allegro*

Aria 2.

Aria 3. *triviale*

Aria 4. *affettuoso*

Aria 5. *presto*

Handwritten musical notation on five staves. The first staff contains a melodic line with a fermata. The second staff is labeled "Aria" and includes the tempo marking "Allegro & Menuto". The third staff has a fermata and the word "Solo". The fourth and fifth staves continue the musical notation, with the fifth staff ending in a large scribble.

Handwritten musical notation on ten staves, mostly blank with some faint notes and clefs visible on the left side of the page.



1034
3360/83
Ouverture Violon

The image shows a page of handwritten musical notation for a violin part, titled "Ouverture Violon". The score is written on 14 staves. The first staff begins with a treble clef, a key signature of one sharp (F#), and a common time signature (C). The music consists of a series of rhythmic patterns, including eighth and sixteenth notes, with some rests. There are several measures with repeat signs (double bar lines with dots) and some measures with fermatas. The notation is clear and legible, with some ink bleed-through from the reverse side of the page. The paper is aged and shows some wear at the edges.



Aria 4.

Aria 5. *presto.*

Aria 6. *Tempo & Menuet.*

