

Telemann, Georg Philipp (1681-1767)

BRD DS Mus.ms 1034/56

Ouverture/a/2 Violin/Viola/e/Cembalo./Teleman./[Incipit]/  
(D-dur)



7 Sätze.  
vgl. Hoffmann.

Ms. 1. H. 18. Jh. (Graupner). 35 x 21 cm.

4 St.: vl 1, 2, vla, vlne. je 2 Bl.

Alte Sign.: 3360.

Hoffmann, D 12.

6.

1

~~3360~~/56.  
1034/

# Overture

a

z

Violin

Viola

fol (8)

e

Clav.



Plemer



fr.

Ouverture.

Violone.

*Perpetuum mobile.*



Overture.

1034  
3360/56

Violino I<sup>mo</sup>

2



*Perpetuum mobile*

Handwritten musical score for 'Perpetuum mobile'. It consists of six staves of music. The first staff has a treble clef, a key signature of one sharp (F#), and a 2/4 time signature. The music is written in a cursive hand and features a continuous, flowing melodic line with many sixteenth and thirty-second notes. The piece concludes with a double bar line and a fermata on the final note.

*Sarabande*

Handwritten musical score for 'Sarabande'. It consists of three staves of music. The first staff has a treble clef, a key signature of one sharp (F#), and a 3/2 time signature. The music is written in a cursive hand and features a slower, more rhythmic melody with many quarter and half notes. The piece concludes with a double bar line and a fermata on the final note.

*Pourree*

Handwritten musical score for 'Pourree'. It consists of four staves of music. The first staff has a treble clef, a key signature of one sharp (F#), and a common time signature (C). The music is written in a cursive hand and features a rhythmic melody with many eighth and sixteenth notes. The piece concludes with a double bar line and a fermata on the final note.

*Menuet*

Handwritten musical score for 'Menuet'. It consists of two staves of music. The first staff has a treble clef, a key signature of one sharp (F#), and a 3/4 time signature. The music is written in a cursive hand and features a simple, elegant melody with many quarter and eighth notes. The piece concludes with a double bar line and a fermata on the final note.

3

*Cherret*

*Tourbillon*

*Jig*

*Guy*

Handwritten musical score for a piece titled "Guy". The score is written on six staves, each with a treble clef and a key signature of one sharp (F#). The time signature is 4/4. The notation includes various note values (quarter, eighth, and sixteenth notes), rests, and bar lines. The sixth staff concludes with a double bar line, a fermata, and a decorative flourish consisting of several parallel lines.

Overture.

3360/56  
1034

Violino 2<sup>o</sup>

Handwritten musical score for Violino 2<sup>o</sup>, Overture. The score consists of 13 staves of music in G major and 2/4 time. It features various rhythmic patterns, including eighth and sixteenth notes, and rests. A double bar line with repeat dots is present on the 13th staff, followed by a change in time signature to 3/4 and then 2/4.





*Perpetuum mobile*  $\frac{2}{16}$

*Sarabande*  $\frac{3}{2}$

*Pourree*  $\frac{3}{4}$

*Menuet*  $\frac{3}{4}$

Handwritten musical score on aged paper, featuring two pieces: *Menuet* and *Touabilon*. The score is written on multiple staves. The first piece, *Menuet*, is in G major and 3/4 time, starting with a treble clef and a key signature of one sharp. The second piece, *Touabilon*, is in G major and 3/8 time, starting with a treble clef and a key signature of one sharp. The notation includes various rhythmic values, accidentals, and dynamic markings. A circled number '5' is visible at the top right of the page.

*Jig*

*Fug*

Handwritten musical score for a fugue, featuring a treble clef, a key signature of one sharp (F#), and a 4/4 time signature. The notation includes a large 'P' dynamic marking and a double bar line at the end of the piece, followed by a large scribble.

Overture

1034  
3360/5b

Viola

6

Handwritten musical score for Viola, Overture section. The score consists of ten staves of music. The first staff begins with a treble clef, a key signature of one sharp (F#), and a common time signature (C). The music is written in a cursive hand and includes various rhythmic values, including eighth and sixteenth notes, and rests. The score concludes with a double bar line and a 2/4 time signature.

Perpetuum  
mobile

Handwritten musical score for Viola, Perpetuum mobile section. The score consists of five staves of music. The first staff begins with a treble clef, a key signature of one sharp (F#), and a 2/4 time signature. The music is characterized by a continuous, flowing melodic line with frequent sixteenth-note patterns. The score concludes with a double bar line and a 2/4 time signature.



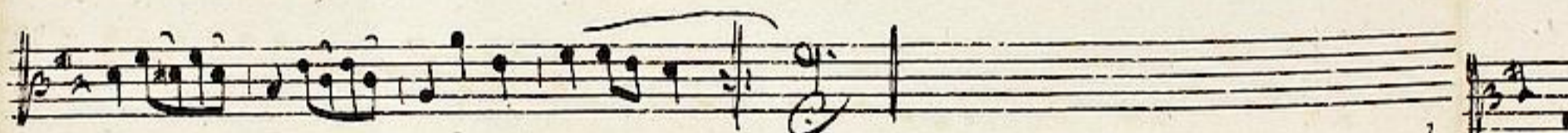
*Sarabande*  $\text{B}^{\flat}$   $\frac{3}{2}$   $\frac{13}{2}$



*Pouree*  $\text{B}^{\flat}$   $\text{C}$



*Menuet*  $\text{B}^{\flat}$   $\frac{3}{4}$   $\frac{13}{4}$



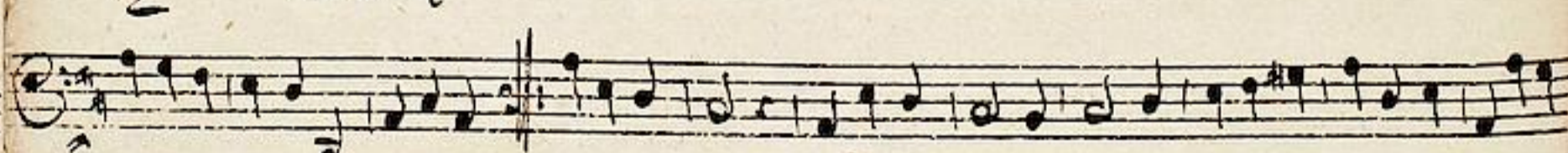
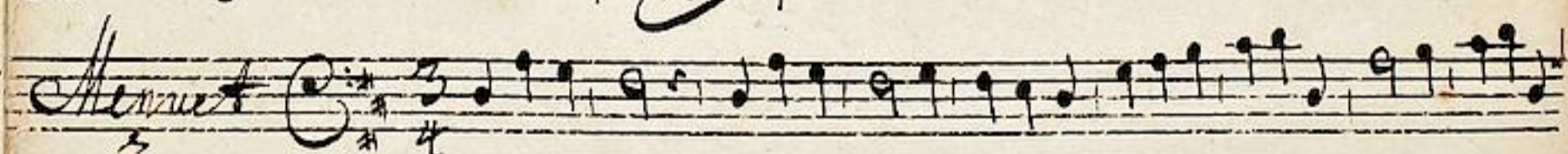
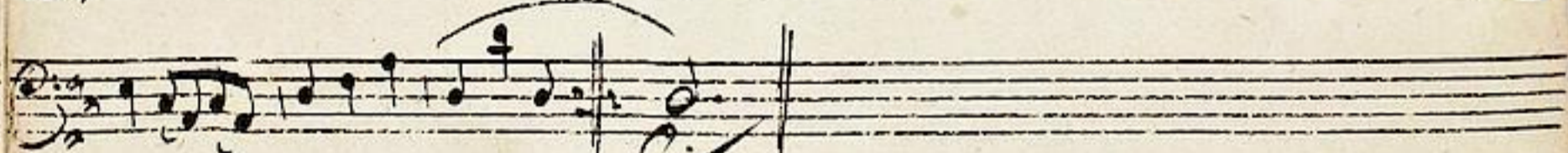
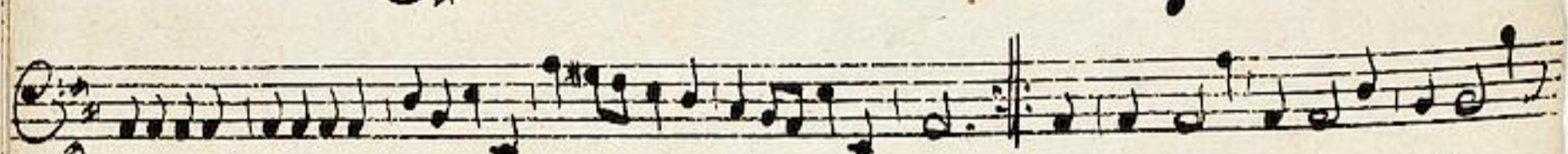
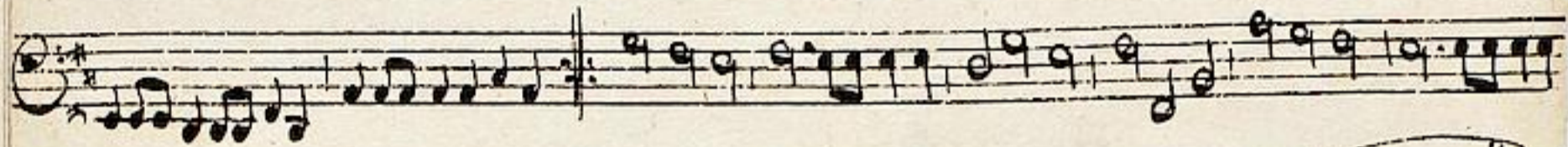
*Menuet*  $\text{B}^{\flat}$   $\frac{3}{4}$   $\frac{4}{4}$



*Fourbilon*  $\text{B}^{\flat}$   $\frac{3}{8}$



This image shows a page of handwritten musical notation on aged, yellowed paper. The page is numbered '7' in the top right corner. It contains approximately 15 staves of music. The notation is dense, featuring many beamed notes and complex rhythmic patterns. A large, stylized signature or word, possibly 'Fitz', is written across the middle of the page. There are several instances of scribbled-out or crossed-out notation, particularly in the lower half of the page. The paper shows signs of age, including some staining and uneven coloring.



*Sourbilon* The first staff of the piece 'Sourbilon' begins with a treble clef, a key signature of one sharp (F#), and a 3/8 time signature. The notation consists of a series of eighth notes and sixteenth notes, often beamed together in groups.

The second staff continues the melodic line with similar rhythmic patterns of eighth and sixteenth notes.

The third staff features more complex rhythmic figures, including some sixteenth-note runs.

The fourth staff continues the piece with a mix of eighth and sixteenth notes.

The fifth staff shows a continuation of the melodic and rhythmic motifs.

The sixth staff includes some sixteenth-note passages.

The seventh staff concludes the 'Sourbilon' section with a final cadence.

*Giz* The second piece, 'Giz', begins with a treble clef, a key signature of one sharp (F#), and a 2/4 time signature. The notation is primarily composed of quarter and eighth notes.

The second staff of 'Giz' continues the simple melodic line.

The third staff of 'Giz' shows a continuation of the piece.

The fourth staff of 'Giz' continues the melodic progression.

The fifth staff of 'Giz' continues the piece.

The sixth staff of 'Giz' continues the melodic line.

The seventh staff of 'Giz' concludes with a double bar line and some scribbled-out notes.