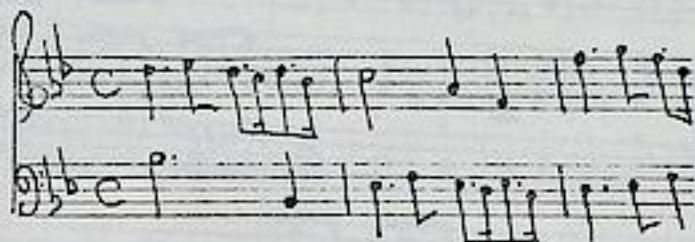


Telemann, Georg Philipp (1681-1767)

BRD DS Mus.ms 1034/31

Ouverture par/Mr:Telemann./ (B-dur) [Kopftitel]



8 Sätze.  
vgl. Hoffmann.

Ms. l. H. 18. Jh.

34 x 21 cm.

W Z: DS 13.

partitur [vl 1, 2, vla, b]: 3 Bl.

Alte Sign.: 3360.

Hoffmann, B 3.



Overture 37.

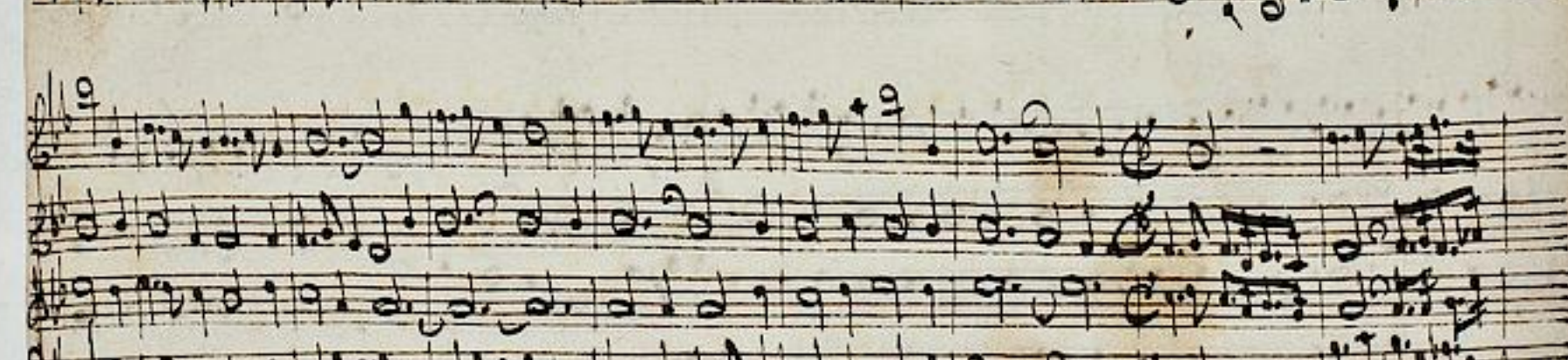
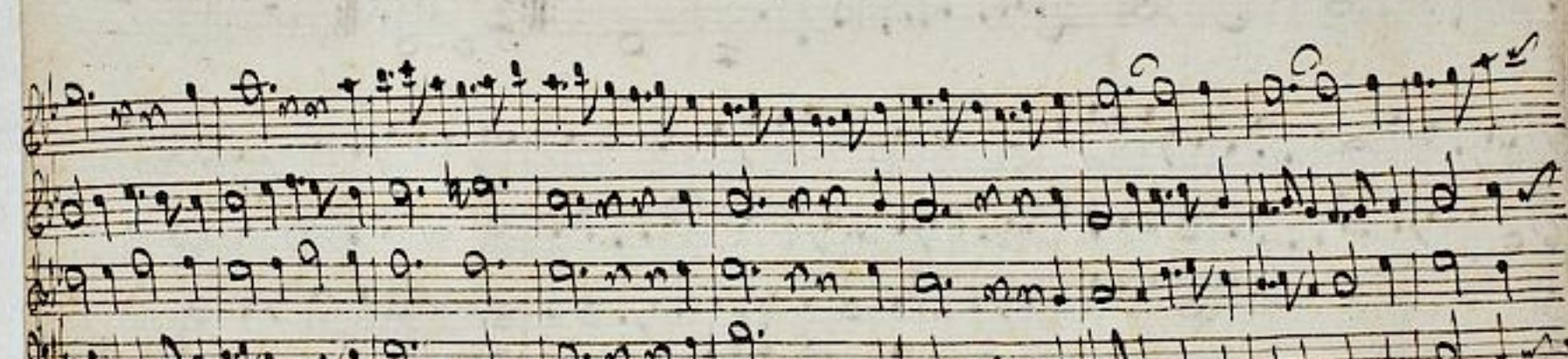
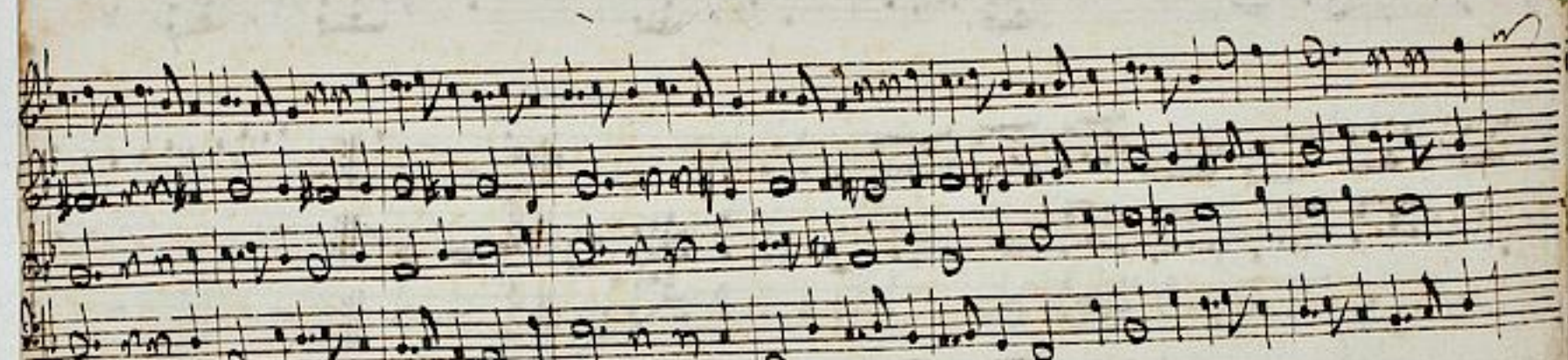
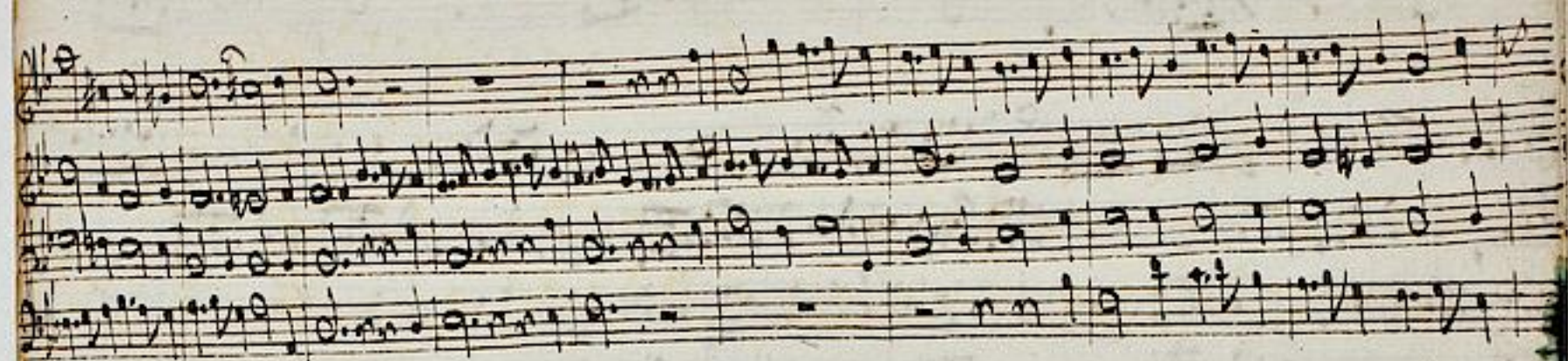
3360/31.  
1034

Mus. par Telemann.

fol. (3)

GROßHERZOGLICHE  
BIBLIOTHEK  
DARMSTADT







Handwritten musical score on a single page, consisting of three systems of three staves each. The notation is dense and includes various rhythmic values and clefs. A large bracket on the right side of the first system indicates a section or measure range.

Handwritten musical score, second system, consisting of three staves. The word "Distraction" is written in a decorative, cursive hand at the beginning of the first staff.

Handwritten musical score, third system, consisting of three staves. The notation continues with various rhythmic patterns and clefs.

Handwritten musical score, fourth system, consisting of three staves. The notation is consistent with the previous systems.

Handwritten musical score, fifth system, consisting of three staves. The notation includes various rhythmic values and clefs.

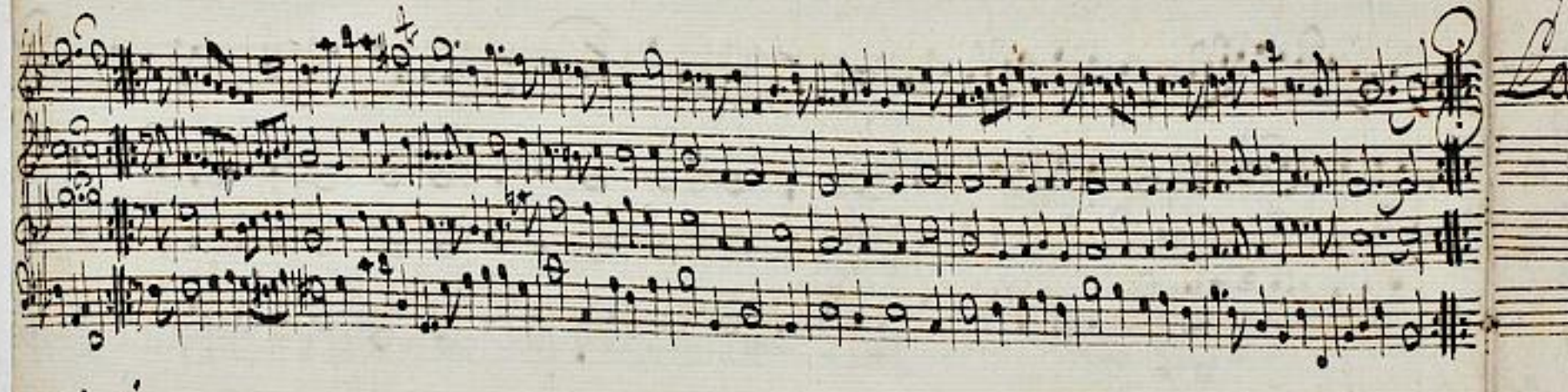
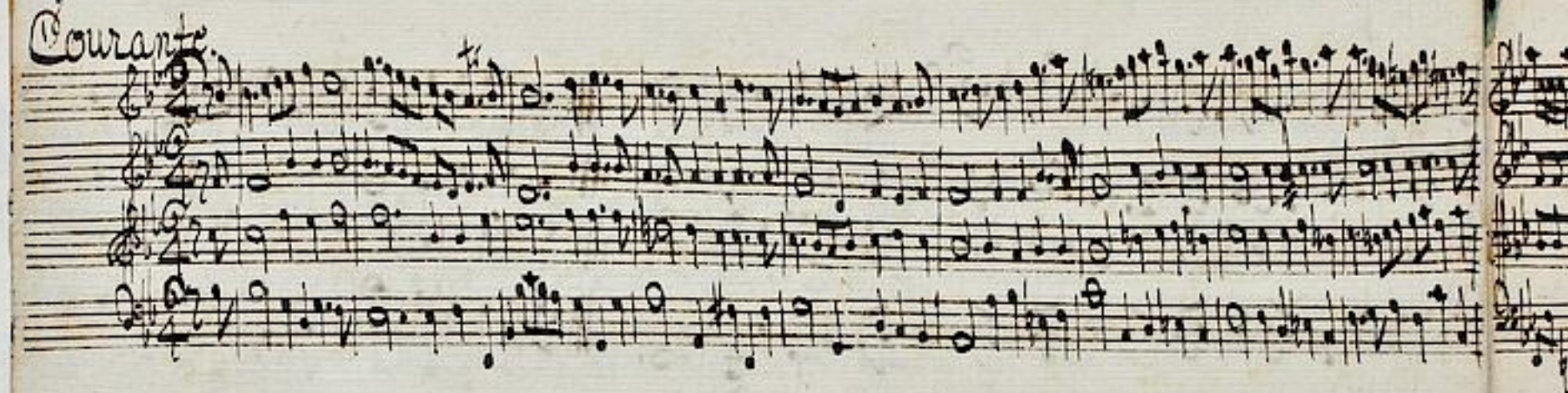
Handwritten musical score, sixth system, consisting of three staves. The word "Menuet. 1." is written at the beginning of the first staff, followed by "alternat:" and "avec le 2." indicating an alternative version or a second ending. The notation includes various rhythmic values and clefs.



*Allegro*



*Courante*



*La Primavera*





Handwritten musical notation on a single staff, featuring a complex rhythmic pattern with many sixteenth and thirty-second notes.

Handwritten musical notation on a single staff, showing a melodic line with various note values and rests.

Handwritten musical notation on a single staff, including a section with a treble clef and a key signature of one sharp.

*La Douce*  
Handwritten musical notation on a single staff, starting with the title "La Douce" and a 3/4 time signature.

Handwritten musical notation on a single staff, featuring a section with a treble clef and a key signature of one sharp.

Handwritten musical notation on a single staff, ending with a double bar line and a fermata.



*Le Conseil* *tres lentem:*

Handwritten musical score for 'Le Conseil' in G major, marked 'tres lentem:'. It consists of four staves: a vocal line and three instrumental staves. The music is in common time and features a slow, melodic vocal line with sustained notes and simple accompaniment.

Continuation of the musical score for 'Le Conseil', showing the vocal line and instrumental accompaniment. The notation includes various note values and rests, with some notes tied across measures.

Continuation of the musical score for 'Le Conseil', showing the vocal line and instrumental accompaniment. The piece concludes with a double bar line and repeat signs on the instrumental staves.

*Mercur*

Handwritten musical score for 'Mercur' in G major. It consists of four staves: a vocal line and three instrumental staves. The music is in common time and features a more active vocal line with frequent eighth and sixteenth notes.

Continuation of the musical score for 'Mercur', showing the vocal line and instrumental accompaniment. The notation includes various note values and rests, with some notes tied across measures.

Continuation of the musical score for 'Mercur', showing the vocal line and instrumental accompaniment. The piece concludes with a double bar line and repeat signs on the instrumental staves.