

Georg Philipp Telemann
(1681-1767)

Sonata e-moll

Solo XI in “Essercizii Musici” (1739)

Oboe e Basso continuo

Georg Philipp Telemann

Sonata e-moll

Solo XI in “Essercizii Musici” (1739)

OBOE

Largo

Musical staff 1, measures 1-3. Treble clef, key signature of one sharp (F#), common time signature (C). The music begins with a half note G4, followed by a quarter note A4, and a quarter note B4. The melody continues with a quarter note C5, a quarter note B4, and a quarter note A4. The piece concludes with a quarter rest, a quarter note G4, and a quarter note F#4.

Musical staff 2, measures 4-6. Treble clef, key signature of one sharp (F#), common time signature (C). The music continues with a quarter note E4, a quarter note D4, and a quarter note C4. The melody then moves to a quarter note B3, a quarter note A3, and a quarter note G3. The piece concludes with a quarter note F#3, a quarter note E3, and a quarter note D3.

Musical staff 3, measures 7-9. Treble clef, key signature of one sharp (F#), common time signature (C). The music continues with a quarter note C3, a quarter note B2, and a quarter note A2. The melody then moves to a quarter note G2, a quarter note F#2, and a quarter note E2. The piece concludes with a quarter note D2, a quarter note C2, and a quarter note B1.

Musical staff 4, measures 10-12. Treble clef, key signature of one sharp (F#), common time signature (C). The music continues with a quarter note A1, a quarter note G1, and a quarter note F#1. The melody then moves to a quarter note E1, a quarter note D1, and a quarter note C1. The piece concludes with a quarter note B0, a quarter note A0, and a quarter note G0.

Musical staff 5, measures 13-15. Treble clef, key signature of one sharp (F#), common time signature (C). The music continues with a quarter note F#0, a quarter note E0, and a quarter note D0. The melody then moves to a quarter note C0, a quarter note B0, and a quarter note A0. The piece concludes with a quarter note G0, a quarter note F#0, and a quarter note E0.

Musical staff 6, measures 16-18. Treble clef, key signature of one sharp (F#), common time signature (C). The music continues with a quarter note D0, a quarter note C0, and a quarter note B0. The melody then moves to a quarter note A0, a quarter note G0, and a quarter note F#0. The piece concludes with a quarter note E0, a quarter note D0, and a quarter note C0.

Musical staff 7, measures 19-21. Treble clef, key signature of one sharp (F#), common time signature (C). The music continues with a quarter note B0, a quarter note A0, and a quarter note G0. The melody then moves to a quarter note F#0, a quarter note E0, and a quarter note D0. The piece concludes with a quarter note C0, a quarter note B0, and a quarter note A0.

Allegro

Musical staff 8, measures 22-24. Treble clef, key signature of one sharp (F#), common time signature (C). The music begins with a quarter note G4, followed by a quarter note A4, and a quarter note B4. The melody continues with a quarter note C5, a quarter note B4, and a quarter note A4. The piece concludes with a quarter note G4, a quarter note F#4, and a quarter note E4.

Musical staff 9, measures 25-27. Treble clef, key signature of one sharp (F#), common time signature (C). The music continues with a quarter note D4, a quarter note C4, and a quarter note B3. The melody then moves to a quarter note A3, a quarter note G3, and a quarter note F#3. The piece concludes with a quarter note E3, a quarter note D3, and a quarter note C3.

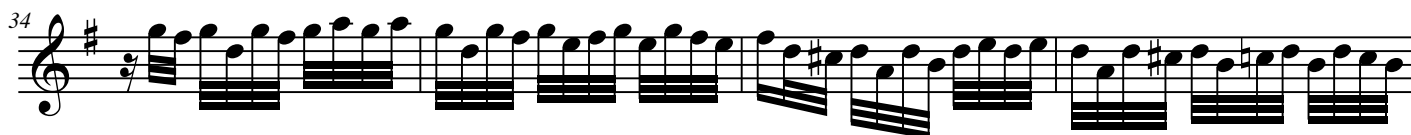
Musical staff 10, measures 28-30. Treble clef, key signature of one sharp (F#), common time signature (C). The music continues with a quarter note B2, a quarter note A2, and a quarter note G2. The melody then moves to a quarter note F#2, a quarter note E2, and a quarter note D2. The piece concludes with a quarter note C2, a quarter note B1, and a quarter note A1.



Grave



Vivace



Georg Philipp Telemann

Sonata e-moll

Solo XI in “Essercizii Musici” (1739)

BASSO CONTINUO

Largo

First staff of music for the Largo section, starting with a bass clef, a key signature of one sharp (F#), and a common time signature (C). The melody begins with a quarter rest, followed by a series of eighth and sixteenth notes.

Second staff of music, starting with a measure number '4' on the left. The melody continues with eighth and sixteenth notes.

Third staff of music, starting with a measure number '8' on the left. The melody continues with eighth and sixteenth notes.

Fourth staff of music, starting with a measure number '11' on the left. The melody continues with eighth and sixteenth notes.

Fifth staff of music, starting with a measure number '15' on the left. The melody continues with eighth and sixteenth notes.

Sixth staff of music, starting with a measure number '18' on the left. The melody continues with eighth and sixteenth notes.

Seventh staff of music, starting with a measure number '21' on the left. The melody continues with eighth and sixteenth notes, ending with a double bar line.

Allegro

First staff of music for the Allegro section, starting with a bass clef, a key signature of one sharp (F#), and a common time signature (C). The melody is more rhythmic, featuring quarter and eighth notes.

Second staff of music for the Allegro section, starting with a measure number '6' on the left. The melody continues with quarter and eighth notes.



Grave



Vivace

Musical score for bass clef, 3/8 time, key of D major. The piece is marked "Vivace". The score consists of 60 measures, divided into ten systems of six measures each. The notation includes eighth and sixteenth notes, rests, and accidentals (sharps and naturals). The key signature has one sharp (F#). The time signature is 3/8. The piece begins with a bass clef, a key signature of one sharp, and a 3/8 time signature. The first measure contains a quarter rest followed by a quarter note D4. The piece continues with a series of eighth and sixteenth notes, often beamed together in groups of four or six. There are several measures with rests, including a half-measure rest in measure 12 and a quarter rest in measure 26. The piece concludes with a final quarter note D4 in measure 60.

