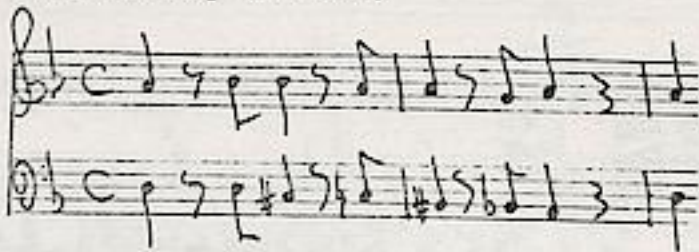


Telemann, Georg Philipp (1681-1767)

BRD DS Mus.ms 1033/53

Concerto a 4.2 Violin.Viol.e Cembale del Sign./Teleman./
[Kopftitel] (d-moll)



Largo C d-moll - Allegro
C d-moll - Andante C d-
moll - Presto 3 d-moll.

Ms.ca.1740 (Graupner). 35,5 x 21,5 cm.

partitur: 2 Bl.

Alte Sign.: N^{ro} 53. N^{ro} 307.

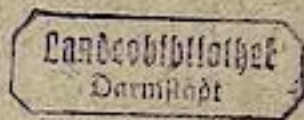
TWU 43 d 2

~~N^{ro} 50. 51. 52. 53. 54. 55. 56. 57. 58. 59. 60. 61.~~

N^{ro} 304.
305.
306.
307.
308.
309.
310.
311.
312.
313.
314.
315.

Pl. (19)

Mus 6053
1033



Largo, No 53, Concerto a 4. e Violin, Viol. e Cembalo del Sign. Telemann

Handwritten musical score for a four-part concerto. The score is written on ten systems of four staves each. It begins with the tempo marking 'Largo' and includes various dynamic markings such as 'pian.' and 'foll.'. The tempo changes to 'Allegro' in the middle section. The notation includes treble and bass clefs, time signatures, and detailed musical notation with notes, rests, and ornaments.

Landesbibliothek
Darmstadt

Handwritten musical notation on a five-line staff, featuring various note values and rests.

Handwritten musical notation on a five-line staff, featuring various note values and rests.

Handwritten musical notation on a five-line staff, featuring various note values and rests.

Handwritten musical notation on a five-line staff, featuring various note values and rests.

Handwritten musical notation on a five-line staff, featuring various note values and rests.

Andante

Handwritten musical notation on a five-line staff, featuring various note values and rests.

Handwritten musical notation on a five-line staff, featuring various note values and rests.

Prato

Handwritten musical notation on a five-line staff, featuring various note values and rests.

Prato

Handwritten musical notation on a five-line staff, featuring various note values and rests.

Handwritten musical notation on a five-line staff, featuring various note values and rests.

Handwritten musical notation on a five-line staff, featuring various note values and rests.

Handwritten musical notation on a five-line staff, featuring various note values and rests.

Handwritten musical notation on four staves, featuring various note values and clefs.

Handwritten musical notation on four staves, continuing the piece with complex rhythmic patterns.

Handwritten musical notation on four staves, including a section marked *rit.* and a large, ornate signature.

