

Sichtmaner No. II.  
18. Fach 18. Lage.

Conc. V. Viola e Basso.  
Del Sig. Melanite.





*Adagio*

*Violino Primo*

Handwritten musical notation for the first system, featuring a treble clef, a key signature of one flat, and a common time signature. The notation includes various note values, rests, and dynamic markings.

*Allegro*

Handwritten musical notation for the second system, continuing the piece with a faster tempo. It features a treble clef, a key signature of one flat, and a common time signature. The notation is more densely packed than the first system.

*piano*

*arco*

*More Volta*

Mus. 2392-Q-10

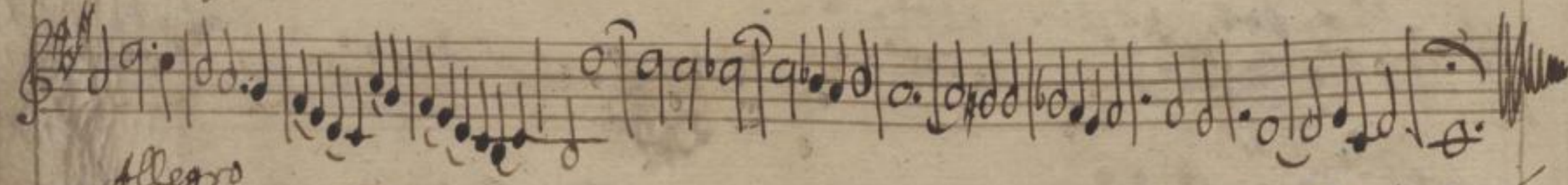
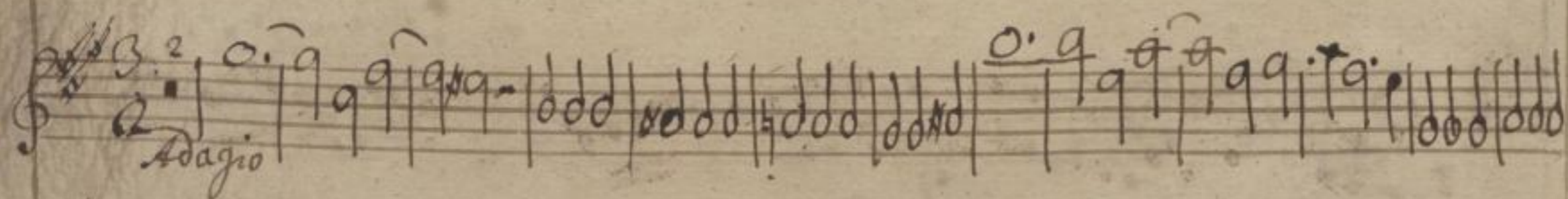
(1-4)

Sächs. Landesbibl.

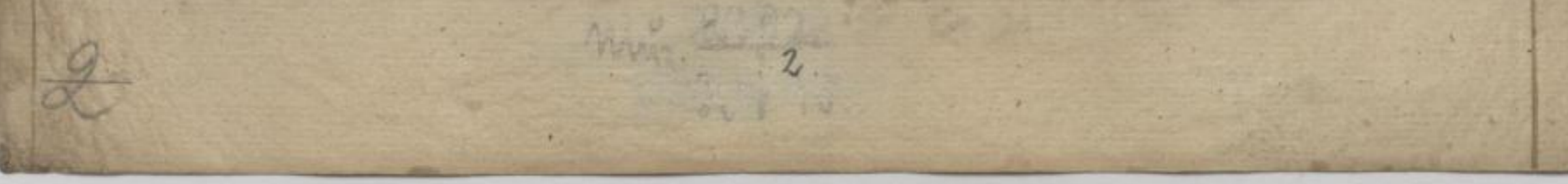
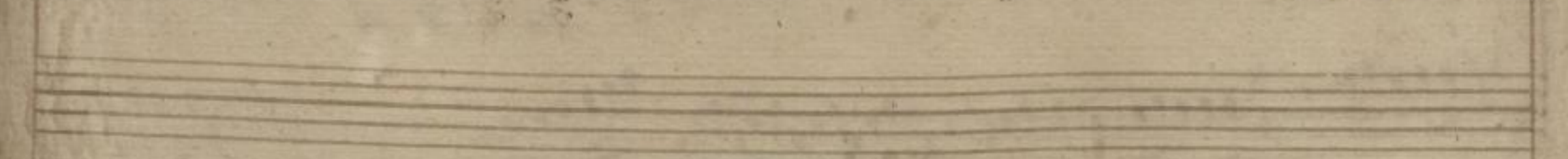
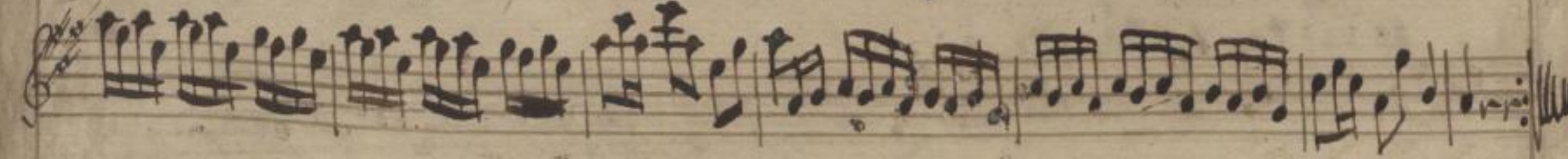

4



Adagio



Allegro



2

2



Violina Secondo

Adagio

*piano* Allegro

Volti subito

Mus. 2392 - Q - 10

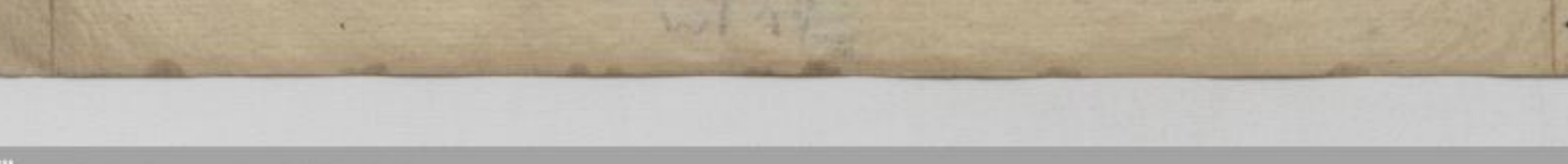
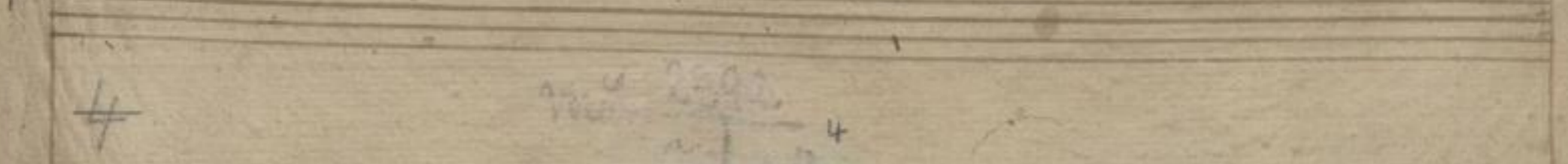
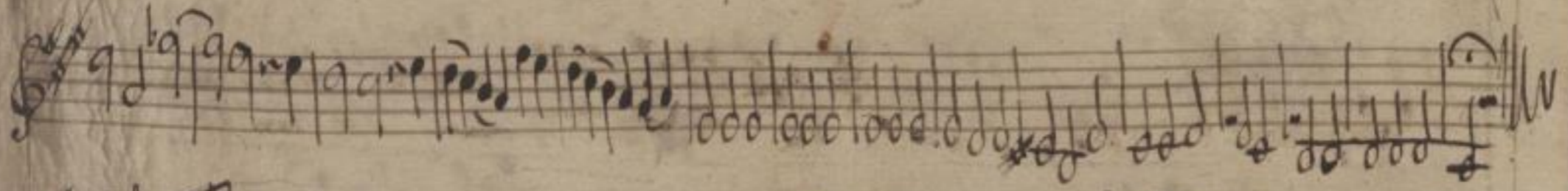
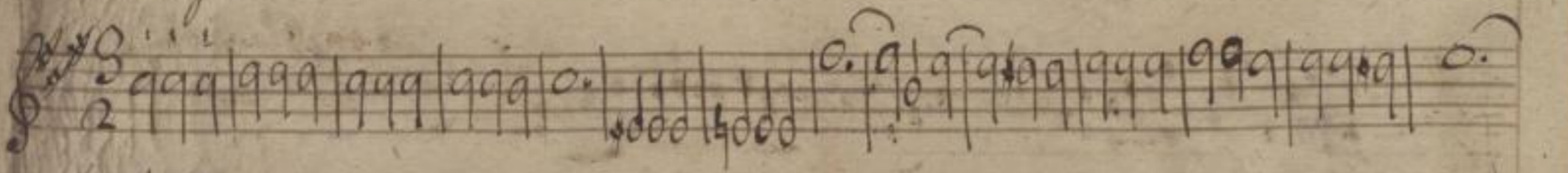
(Bach)

3  
Sächs.  
Landes-  
bibl.

2



Adagio



347034



Alto Viola

310,5

Adagio

Handwritten musical notation for the Adagio section, consisting of four staves of music. The notation includes various note values, rests, and dynamic markings such as 'piano' and 'e e'.

Allegro

Handwritten musical notation for the Allegro section, consisting of seven staves of music. The notation is more densely packed than the Adagio section, featuring many sixteenth and thirty-second notes.

Largo

Handwritten musical notation for the Largo section, consisting of two staves of music. The notation features large note values and a slower tempo.

Mus. 2392-Q-10

(Bach)

5  
Sächs. Landesbibl.



Allegro

6

6



Adagio

# Cembalo

2

Adagio

3

7

Mus. 2392-Q-10

(69644)





A page of handwritten musical notation on aged, yellowed paper. The page contains ten staves of music, each beginning with a treble clef and a 3/4 time signature. The notation is dense, featuring various note values, rests, and some complex rhythmic patterns. A notable feature is a large, dark, scribbled-out section on the third staff. The paper shows signs of age, including some staining and foxing.

8

Mus. 2392  
Q 120 8