

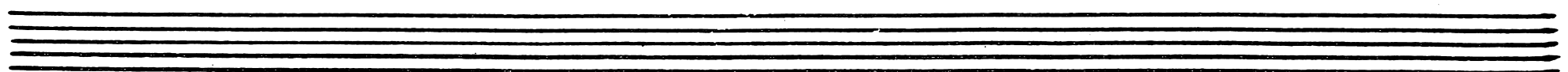
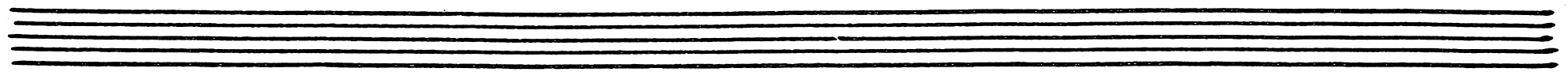
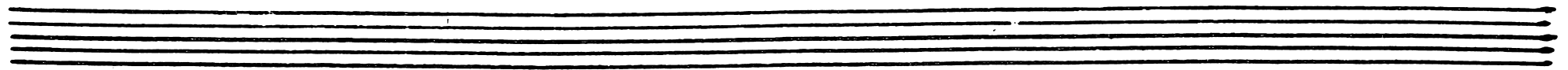
A handwritten musical score consisting of ten staves of music. The notation is dense and includes various musical symbols such as notes, rests, beams, and slurs. The score is written in a single system across ten staves. Key features include:

- Staff 3:** Contains the word "Solo" written above the staff.
- Staff 6:** Contains the word "4utti" written above the staff.
- Staff 8:** Contains the word "Solo" written above the staff.

The music appears to be a complex piece, possibly a concerto or a chamber work, given the density of the notation and the inclusion of performance directions like "Solo" and "4utti". The handwriting is clear and professional.

Handwritten musical score for a string ensemble, consisting of eight staves of music. The notation includes various rhythmic patterns, slurs, and dynamic markings such as "tutti" and "30:". The music is written in a single system across the staves.

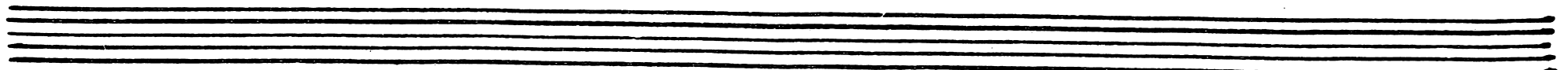
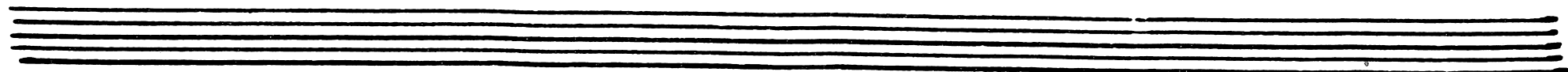
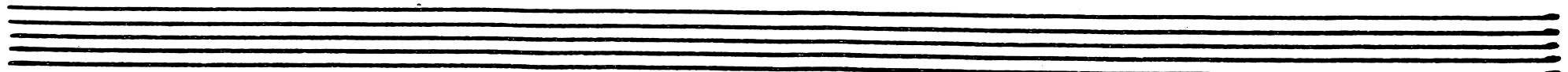
Two empty musical staves at the bottom of the page, with a signature "G. Paganini" written in the right-hand staff.

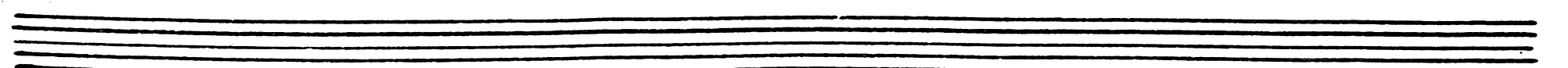
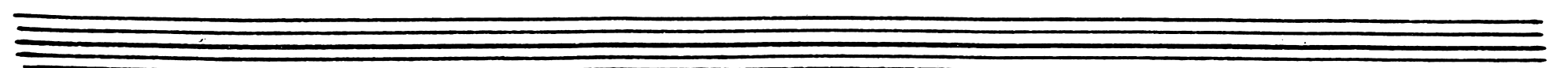
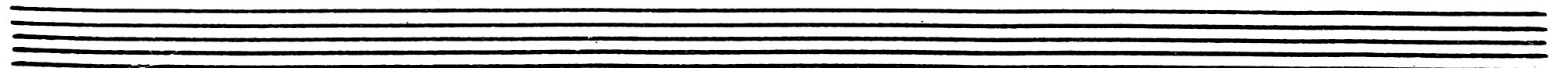
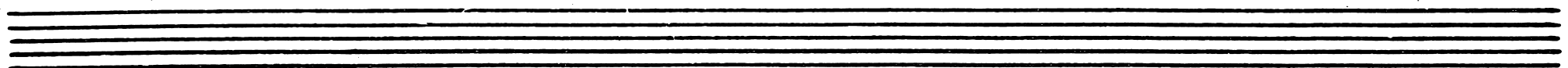
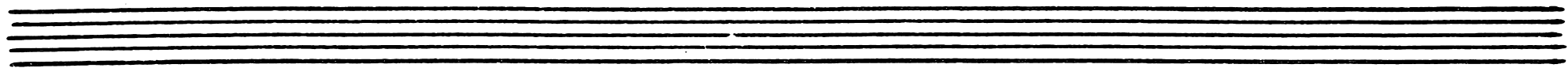
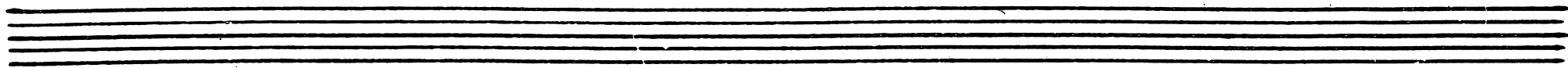


*Adagio*

Handwritten musical notation for the first system. It consists of two staves. The upper staff is in treble clef with a key signature of one flat (Bb) and a 3/4 time signature. It contains a melodic line with various note values, including eighth and sixteenth notes, and some beamed passages. The lower staff is in bass clef with the same key signature and time signature, containing a bass line with quarter and eighth notes.

Handwritten musical notation for the second system. It consists of two staves. The upper staff is in treble clef with a key signature of one flat (Bb) and a 3/4 time signature. It contains a melodic line with various note values, including eighth and sixteenth notes, and some beamed passages. The lower staff is in bass clef with the same key signature and time signature, containing a bass line with quarter and eighth notes.





A handwritten musical score consisting of ten staves of music. The notation is dense and includes various musical symbols such as notes, rests, beams, and slurs. The score is written in a single system across ten staves. The key signature is one sharp (F#), and the time signature is 2/4. The music is characterized by frequent sixteenth and thirty-second notes, often beamed together. There are several dynamic markings: "Solo" appears on the third staff, and "tutti" appears on the fifth staff. The handwriting is fluid and expressive, typical of a composer's draft. The paper shows some signs of age, with slight discoloration and a few small stains.

Handwritten musical score for a string quartet, measures 155-166. The score is written on ten staves, with the first two staves of each system containing two parts each. The music is in G major (one sharp) and 3/4 time. The first system (measures 155-160) features a *tutti* marking above the first staff and a *lolo* marking above the second staff. The second system (measures 161-166) features a *tutti* marking below the first staff. The score includes various musical notations such as eighth and sixteenth notes, beams, slurs, and dynamic markings. The piece concludes with a double bar line at the end of measure 166.

Empty musical staff consisting of five horizontal lines.

Empty musical staff consisting of five horizontal lines.

Empty musical staff consisting of five horizontal lines.