

Tartini, G.

[Lyonfoni, B.]

Sinfonia in B.4.
a 3. voci.

Violino 1^o ————— " 11.

Violino 2^o ————— " 11.

Basso. ————— " 11.

da Giuseppe Tartini.

♩: 4.

Sinfonia

a

Due Violini II. II.

Viola I.

e

Basso. IIII.

Nº 131.

Solnitz.

Od-R

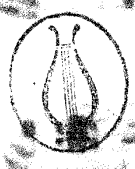
No. 11.

Tartini, G.
[Symphony, B.]

Violino Primo

B. 4.

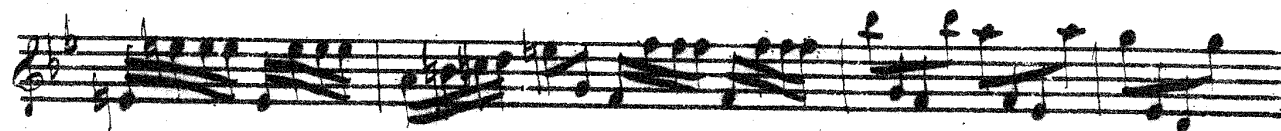
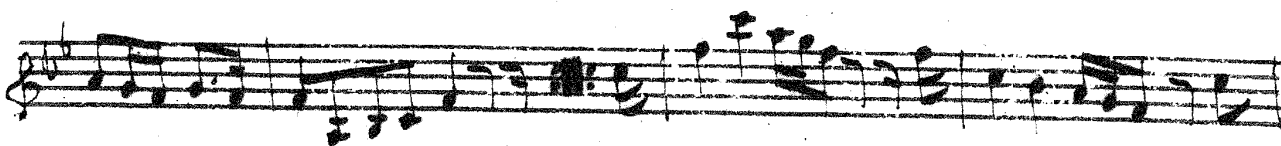
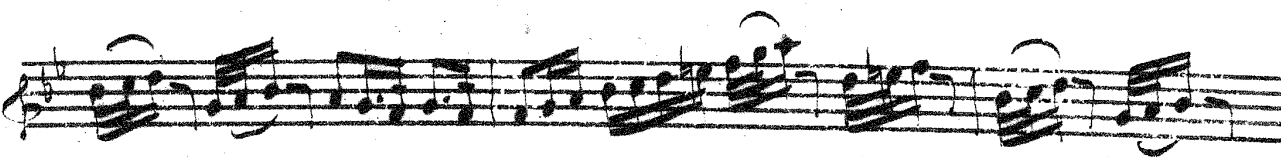
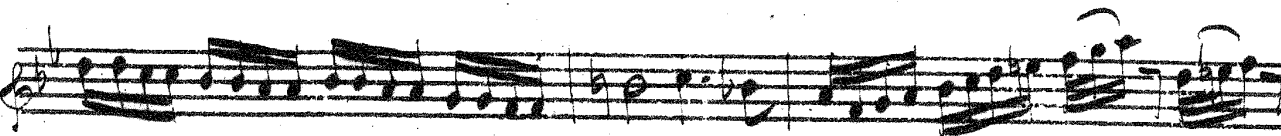
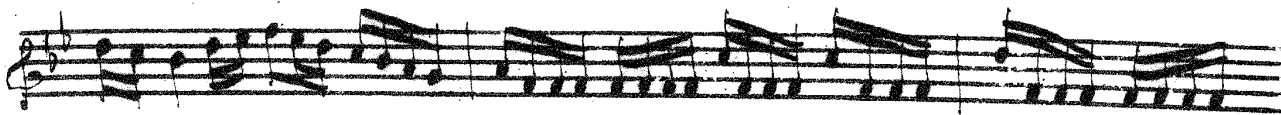
del Signor Tartini

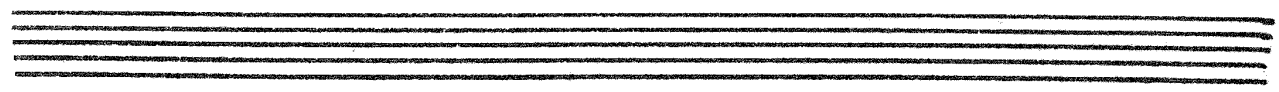
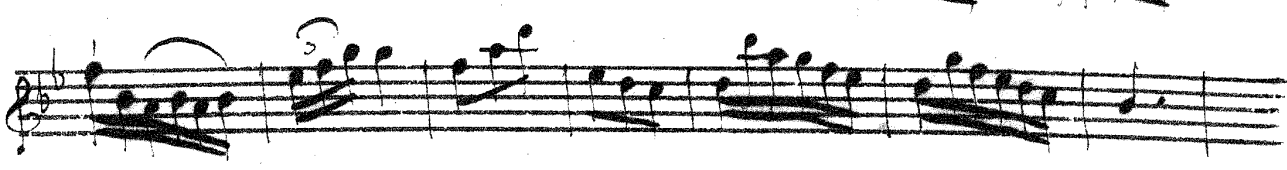
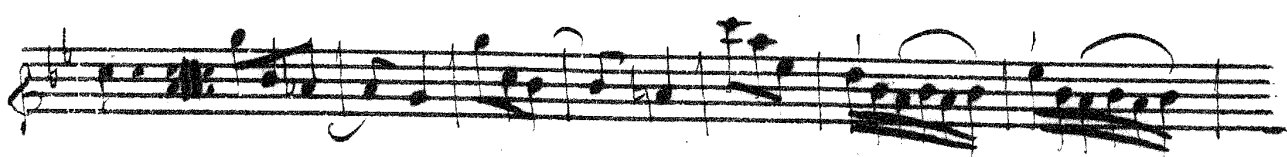
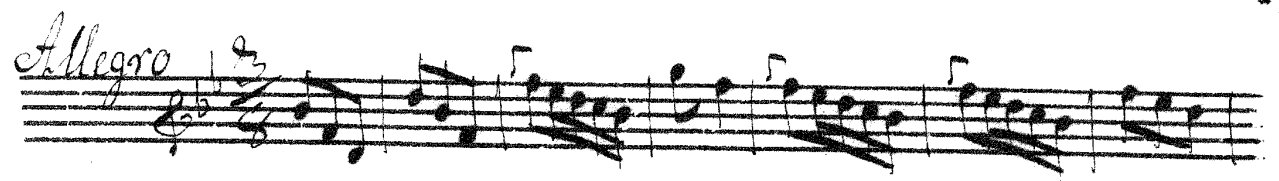
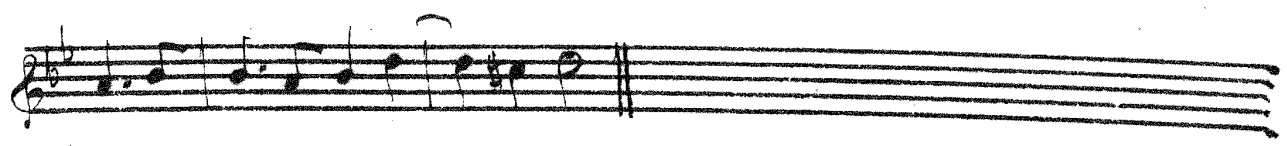
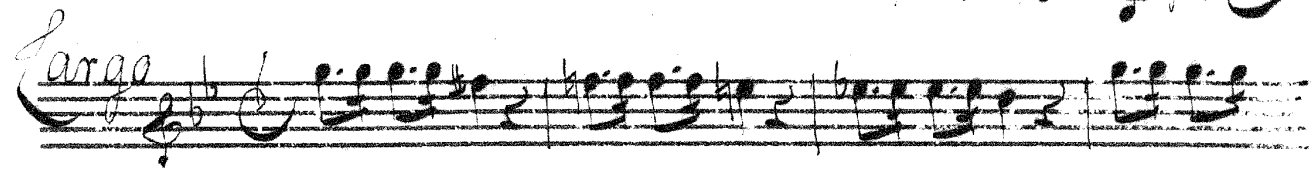
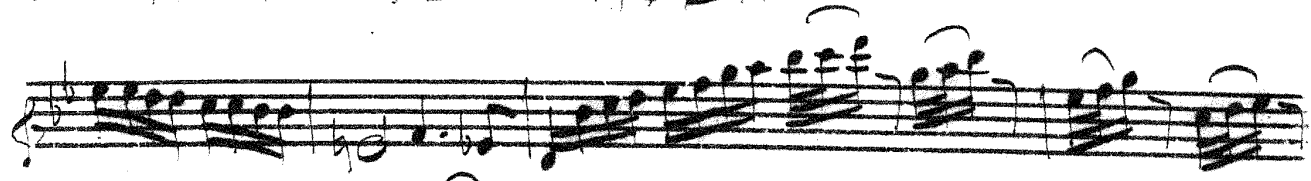


Sinfonia

Violino I^{mo}

Allegro





Handwritten musical notation on five staves, including notes, rests, and dynamic markings.

Tartini, g.

[Symfoni, B.]

Violino Secondo



Handwritten musical notation on ten staves, including notes, rests, and dynamic markings.

Sinfonia

Violino 2^{do}

Allegro

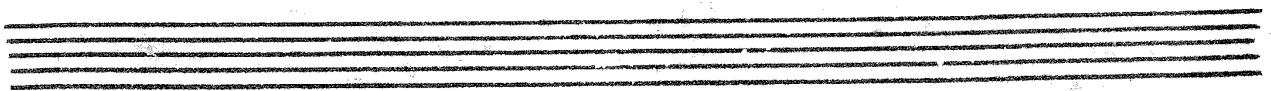
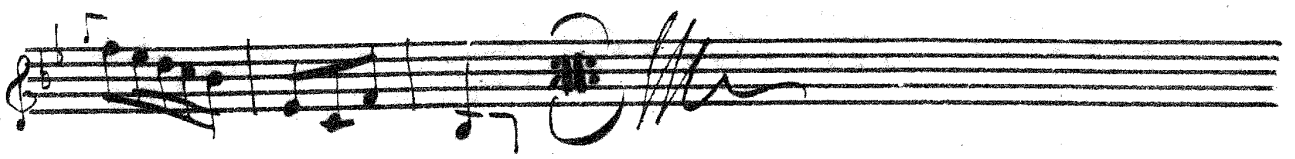
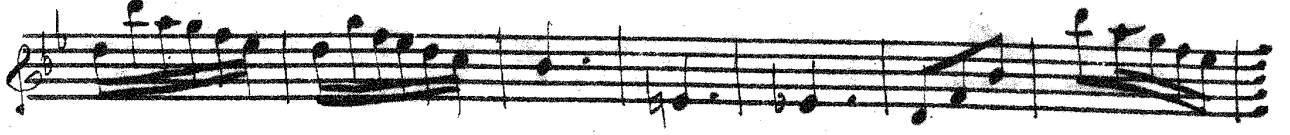
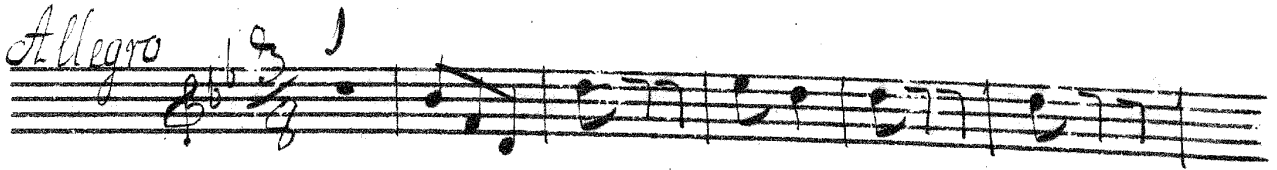
Handwritten musical score for Violino 2^{do}, Sinfonia, Allegro. The score consists of 12 staves of music in G major, 2/4 time. The notation includes various rhythmic values, slurs, and dynamic markings. The first staff begins with a treble clef, a key signature of one sharp (F#), and a 2/4 time signature. The tempo is marked 'Allegro'. The score includes dynamic markings such as 'pia.' (piano) and 'for.' (forte). The music features a mix of eighth and sixteenth notes, often beamed together, and includes some triplet markings. The piece concludes with a final cadence on the twelfth staff.



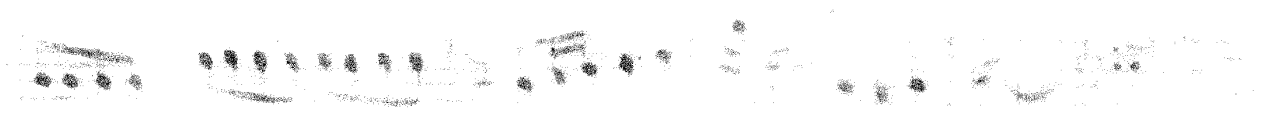
Largo



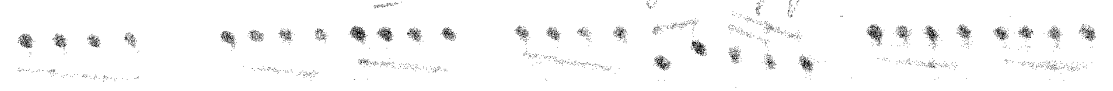
Allegro



Od-R



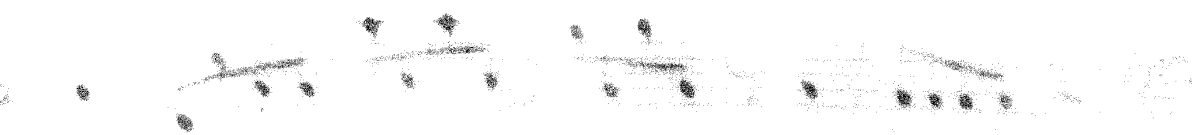
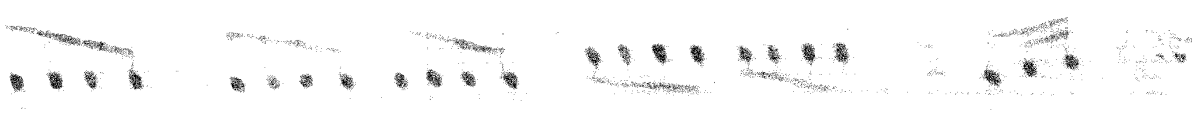
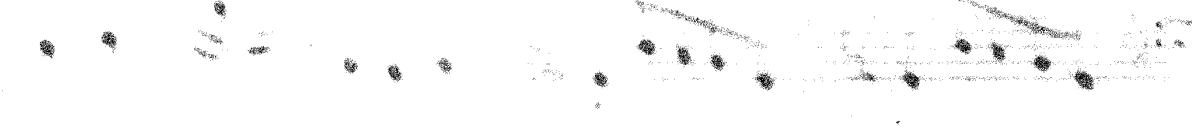
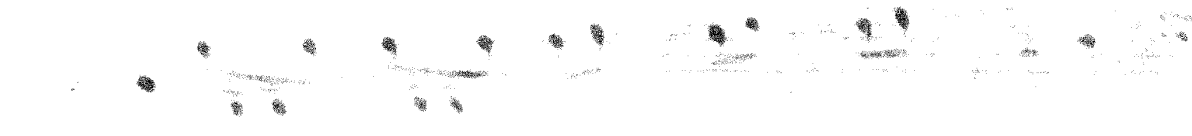
Tartini, Giuseppe



[Sinfonia, B.]



Basso



Allegro Sinfonia

Basfo

This image shows a handwritten musical score for a Bassoon (Basfo) part in a symphony (Sinfonia). The tempo is marked *Allegro*. The score is written on 11 staves, each with a treble clef and a key signature of one flat (B-flat). The music is characterized by a steady eighth-note rhythm, often in pairs, with various melodic lines and some dynamic markings like *ff* (fortissimo) and *f* (forte). The notation includes stems, beams, and note heads, with some slurs and accents. The paper shows signs of age and wear, particularly along the left edge.

