

Sonata del Sig. Schaffrath.

*Allegro*

Handwritten musical notation on a grand staff (treble and bass clefs). The music features a complex, flowing melody in the treble clef with many sixteenth and thirty-second notes. The bass clef provides a steady accompaniment with chords and single notes. The key signature has one flat (B-flat).

Handwritten musical notation on a grand staff. The treble clef continues the intricate melodic line with various ornaments and slurs. The bass clef accompaniment includes some chromatic movement and rests.

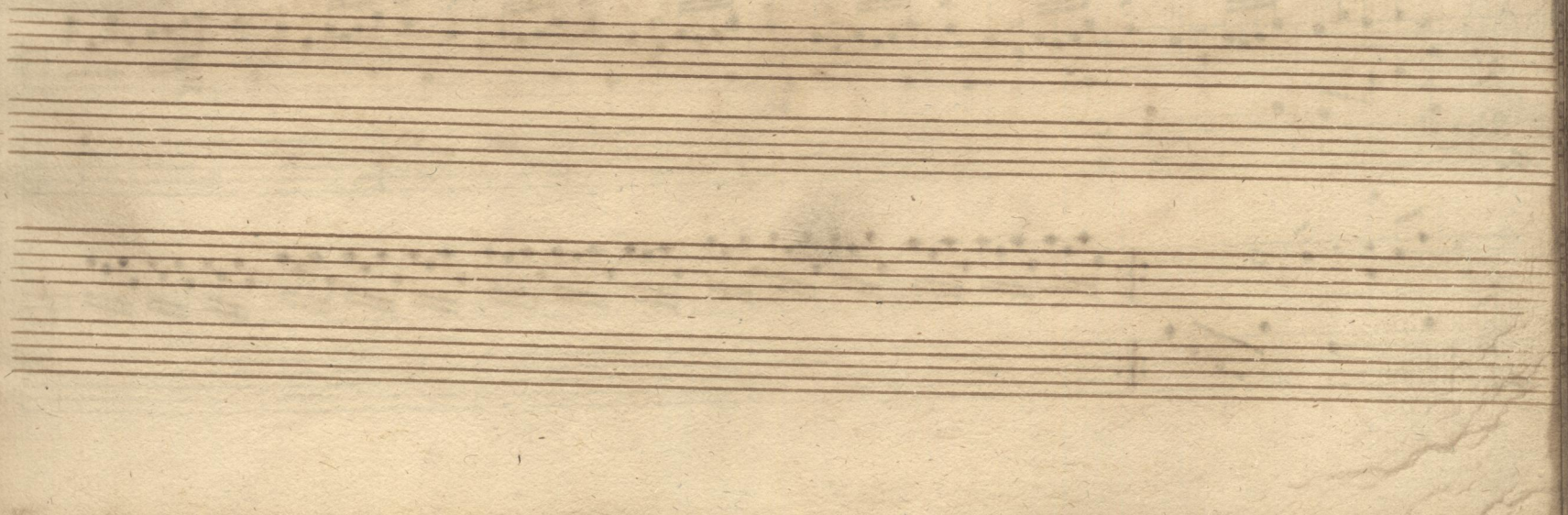
Handwritten musical notation on a grand staff. The treble clef features a series of descending sixteenth-note passages. The bass clef accompaniment consists of chords and single notes, some with accidentals.

Handwritten musical notation on a grand staff. The treble clef has a dense texture of sixteenth-note patterns. The bass clef accompaniment is more rhythmic, with some notes marked with accents.

Handwritten musical notation on a grand staff. The treble clef continues with rapid sixteenth-note passages. The bass clef accompaniment includes some chromatic lines and rests.

Handwritten musical notation on a grand staff. The treble clef has a few notes and rests. The bass clef accompaniment includes some chords and rests.

*Segue Adagio.*



*Adagio*

The Adagio section is written on three systems of staves. Each system consists of a treble clef staff and a bass clef staff. The music is in a 3/4 time signature and a key signature of two flats (B-flat and E-flat). The first system features a melodic line in the treble clef with eighth and sixteenth notes, and a supporting bass line. The second system continues the melodic development with some rests in the bass line. The third system concludes the section with a final cadence, marked with a double bar line.

*Vivace*

The Vivace section is written on five systems of staves. Each system consists of a treble clef staff and a bass clef staff. The music is in a 3/4 time signature and a key signature of two flats. The first system begins with a treble clef staff featuring a rapid sixteenth-note pattern, while the bass clef staff provides a steady accompaniment. The second system continues this texture with some melodic variation in the treble. The third system shows a change in the treble clef staff's texture, with more frequent rests. The fourth system features a return to a dense sixteenth-note texture in the treble. The fifth system concludes the section with a final cadence, marked with a double bar line.

A handwritten musical score on five systems of staves. Each system consists of a grand staff with a treble clef on the upper staff and a bass clef on the lower staff. The music is written in a single system, likely for a piano. The notation includes various note values, rests, and accidentals. The piece concludes with a double bar line and the word "Fine" written in cursive. The paper is aged and shows some staining.

*Fine*