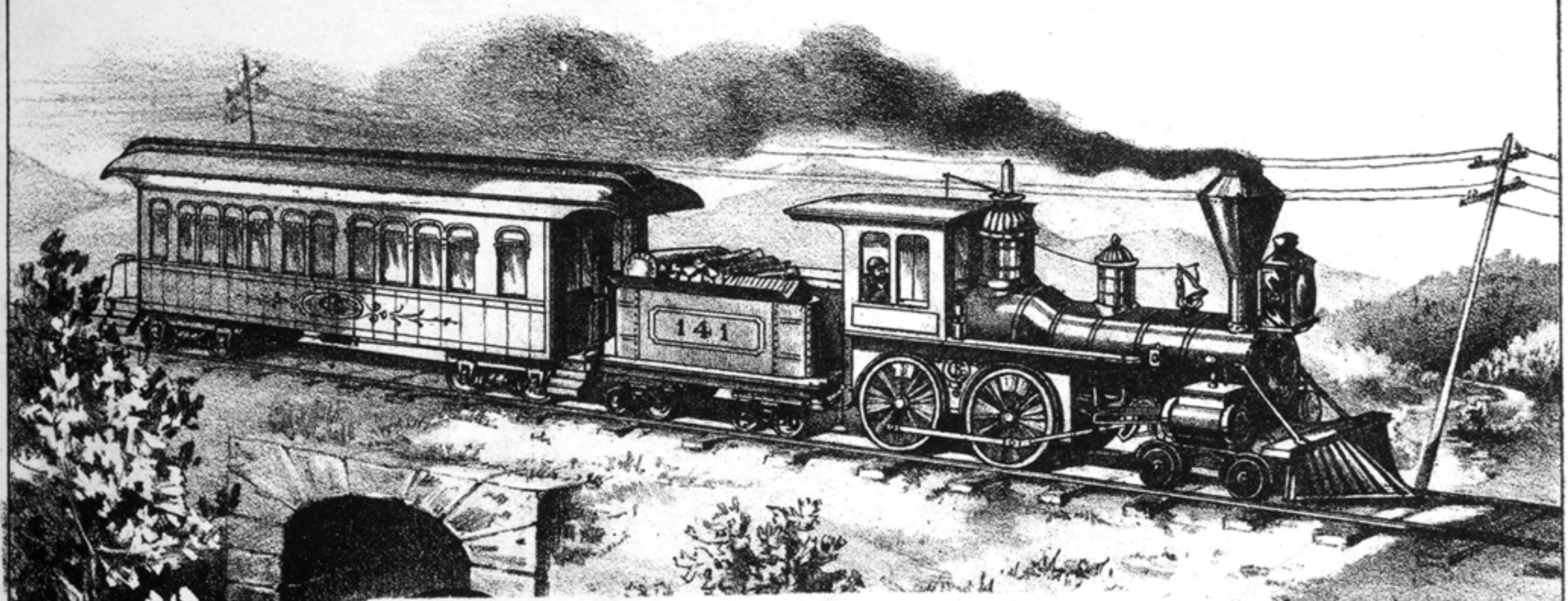


TO THE BROTHERHOOD OF ENGINEERS.

DOWN THE LINE

SONG FOR BASE VOICE.



WORDS BY

A. K. OWEN.

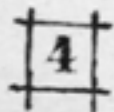
MUSIC BY

GEO. F. ROOT.

CINCINNATI.

Published by THE JOHN CHURCH CO. 74 W. Fourth St.

CHICAGO.
ROOT & SONS MUSIC CO.
200 WABASH AVE.



NEW YORK.
J. CHURCH & CO.
55 EAST 13th ST.

DOWN THE LINE.

(THE ENGINEER ON HIS TRAIN.)

SONG FOR BASE VOICE.

A. K. OWEN.
ALLEGRETTO.

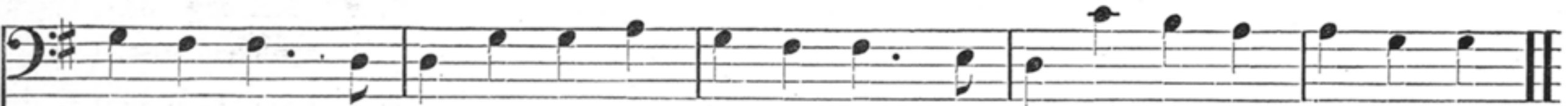
GEO. F. ROOT.

1. I feel my en - gine
2. I . pass and breathe an
3. How ma - ny friends I

rock and reel, O'er ribs of oak and bars of steel, Tho' death be near—a - head—be - low, I
earn - est prayer, "O Fa - ther keep them in thy care;" What fears I feel, may they not know, As
cause to meet, In blest com - mun - ion, sa - cred, sweet; How ma - ny friends I cause to part, With



may not heed, but on must go. Ah! she is dear al - most as life, I love her next the
o'er the ring - ing rails I go. Tho' storms may gath - er on the plain, And mad - ly dash a -
tear - ful eye and sorrowing heart. But with the lev - er firm in hand, Between such lives and



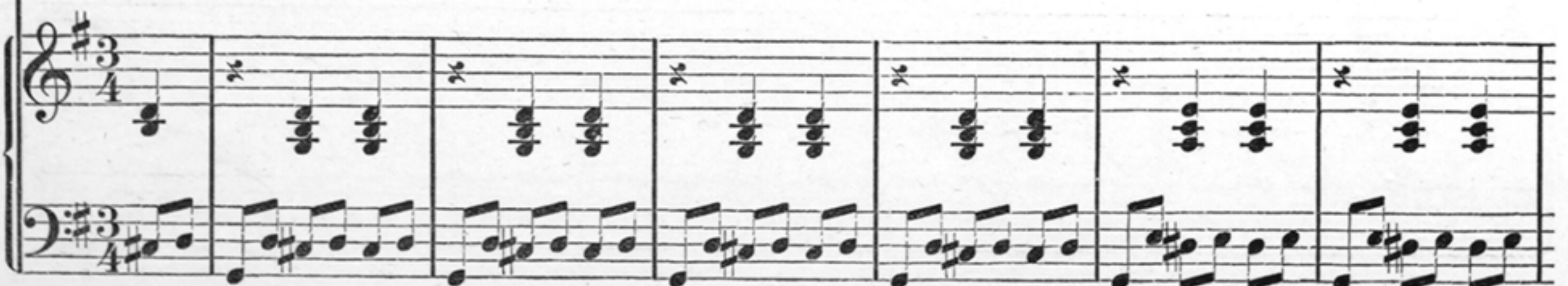
child and wife Whose fac - es at the win - dow pane, I pass each morning on the train.
gainst my train; Tho' tem - pests rage and wild winds blow, I may not heed but on must go.
death I stand; And may I, taught by love di - vine, If need be, for those lives give mine.



REFRAIN.



I rock and reel, rock and reel, O'er ribs of oak and



bars of steel, From friends and all my loved a - way, I thun - der

down . . the line . . . all day, I thun - - - der

down the line all day.

This chord only after last verse.

Go to prelude from here for 2d and 3d verses.