

P. L. JUNG'S CHORUSES FOR MEN'S VOICES.

	<i>net.</i>
*1. Love and Time. Op. 3 N ^o 1.	Edgar Thorn. 12 c
*2. The Rose and the Gardener. Op. 3 N ^o 2.	" " " 15 c
*3. Two Songs from the 13 th Century. N ^o 1.	Edward Mac Dowell. 6 c
*4. " " " N ^o 2.	" " " 10 c
*5. The Cossack.	S. Moniuszko. 6 c
*6. Hush, hush! Op. 52. N ^o 1.	Edward Mac Dowell. 6 c
*7. From the Sea. Op. 52. N ^o 2.	" " " 12 c
*8. The Crusaders. Op. 52. N ^o 3.	Edward Mac Dowell. 20 c
*9. Serenade.	A. Borodine. 10 c
*10. Spring.	N. Sokolow. 15 c
*11. The Brook and the Nightingale. Op. 43. N ^o 2.	Max Filke. 6 c
*12. A Love Song.	Geo. Ingraham. 10 c
*13. Spring Song. Op. 34.	Carl Beines. 6 c
*14. Folk Song.	Rimsky Korsakow. 6 c
*15. Bonnie Katrine. Op. 23, N ^o 2.	Franz von Holstein. 6 c
16. Bonnie Ann. Op. 53, N ^o 1.	Edward Mac Dowell. 10 c
17. The Collier Lassie. Op. 53, N ^o 2.	" " " 10 c
*18. From Siberia. Op. 6, N ^o 1.	N. Sokolow. 20 c
19. Midsummer Clouds. Op. 54, N ^o 2.	Edward Mac Dowell 6 c
20. A Ballad of Charles the Bold. Op. 54, N ^o 1.	" " " 15 c
*21. Under flowering branches. Op. 36, N ^o 2.	J. V. v. Wöss. 10 c
22. Oh! weep for those.	Maurice Arnold. 10 c
*23. The Witch. Op. 5.	Edgar Thorn. 12 c
*24. Die Kreuzfahrer. Op. 52 N ^o 2.	Edward Mac Dowell. 20 c

New York, P. L. JUNG, Publisher.

*1) First performance by Mendelssohn Glee Club, New York.

Folk Song.

Rimsky - Korsakow.

Andante.

I. II. Tenor.



Far, far a - way in — Pers - ian lands 'Neath pal - lid

I. Bass.



Far a - - way 'Neath

II. Bass.



Far, far a - way the



moon, — the night - in - gale — Pours out his heart, be - fore the



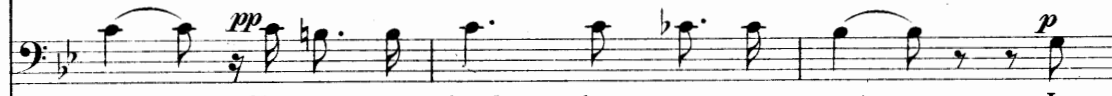
pal - lid moon, the night - in - gale Pours out his heart, be - fore the



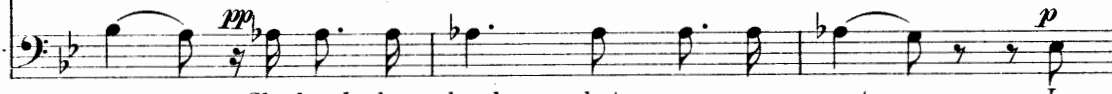
night - - in - - gale — Pours out his heart, be - fore the



rose — She bends her head — but — an - swers not — A - far in



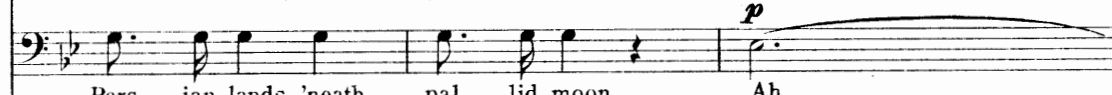
rose — She bends her head but an - swers not — In



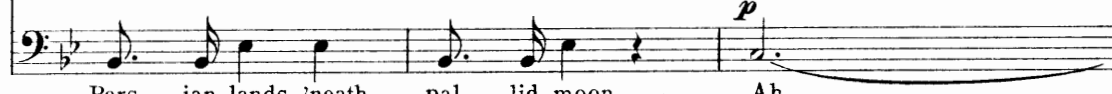
rose — She bends her head but an - swers not — In



Pers - ian lands, 'neath pal - lid moon The night - in - gale sings 'fore the



Pers - ian lands, 'neath pal - lid moon Ah



Pers - ian lands, 'neath pal - lid moon Ah

hold. *p* *mf*

rose. — And hark the lov - er's song, and hark the lov - er's song That

p

And hark the song, the lov - er's song —

p'

And hark the song, the lov - er's song —

espressivo. *p*

plead - ing, ech - oes through the night — And hark the song, — the

p

Hark — And hark the song, — the

p

Hark — And hark the song, — the

hold. *pp*

lov - er's song, — And yet the maid - en — an - swers not — And

lov - er's song, And yet the maid - en an - swers not — And

lov - er's song, And yet the maid - en an - swers not — And

ppp *hold.* *ritardando.* *pppp*

so the song, — the sad song dies, — And so the sad song dies a - way.

so the song, — the sad song dies, — And so the sad song dies a - way.

so the song, — the sad song dies, — And so the sad song dies a - way.

P. L. JUNG'S CHORUSES FOR FEMALE VOICES.

1. Dreamy Lake. (4 Parts) Op. 6 No. 1.	Henry K. Hadley.	net. 6 c
2. The Miller. . (4 Parts) Op. 6 No. 2.	" " "	15 c
3. A Snowflake. (4 Parts) Op. 6 No. 3.	" " "	6 c

New York, P. L. JUNG, Publisher