

Schraner No. II.  
40. Fach 6. Lage  
in C  
Vollst. Sig. Rebel

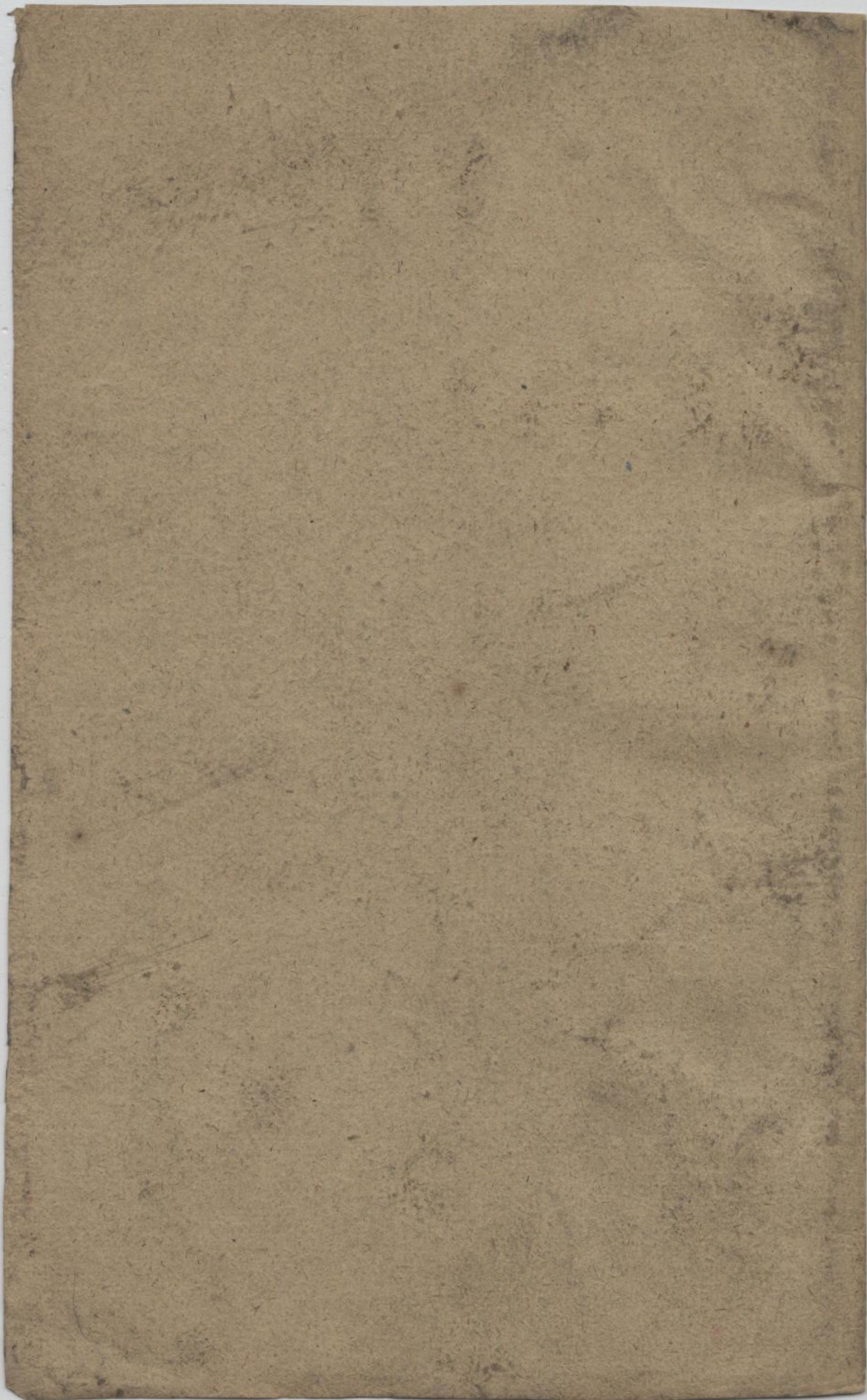


Musica	
2146	
n	2

1800  
1546

1002





Les Caracteres de la dance Par M<sup>r</sup>. Rebel.

piano Violini Hautb. et Flute.

Handwritten musical notation on a single staff, featuring various note values and rests.

Prelude.

Handwritten musical notation on a single staff, continuing the prelude.

Handwritten musical notation on a single staff, labeled 'Soprano' and 'piano'.

Handwritten musical notation on a single staff, continuing the vocal line.

Handwritten musical notation on a single staff, labeled 'piano'.

Handwritten musical notation on a single staff, labeled 'Allegretto' and 'Courante'.

Handwritten musical notation on a single staff, labeled 'et premier Violin'.

Handwritten musical notation on a single staff, labeled 'Courant. forte'.

Handwritten musical notation on a single staff, labeled 'forte'.

Handwritten musical notation on a single staff, labeled 'piano'.

Handwritten musical notation on a single staff, labeled 'piano'.

Handwritten musical notation on a single staff, labeled 'piano'.

Handwritten musical notation on a single staff, labeled 'piano'.

Handwritten musical notation on a single staff, labeled 'piano'.

Mus. 2146-N-2  
No 1546



2  
1

forte.

Musical staff with notes and trills (tr).

Bourée

Musical staff with notes.

forte.

Musical staff with notes.

Musical staff with notes and dynamics (p, f).

Bourée forte.

Musical staff with notes and trills (tr).

piano

for.

Musical staff with notes and dynamics (p, fu.).

piano

fu.

Musical staff with notes and dynamics (piano).

piano

Musical staff with notes and dynamics (piano, for.).

piano

for.

Musical staff with notes and dynamics (piano).

piano

Hautb.

Musical staff with notes and dynamics (piano).

Raccone

Hautb. 2da

Viol. 2da

Musical staff with notes and dynamics (piano).

piano

Musical staff with notes and dynamics (piano).

ut. sep.

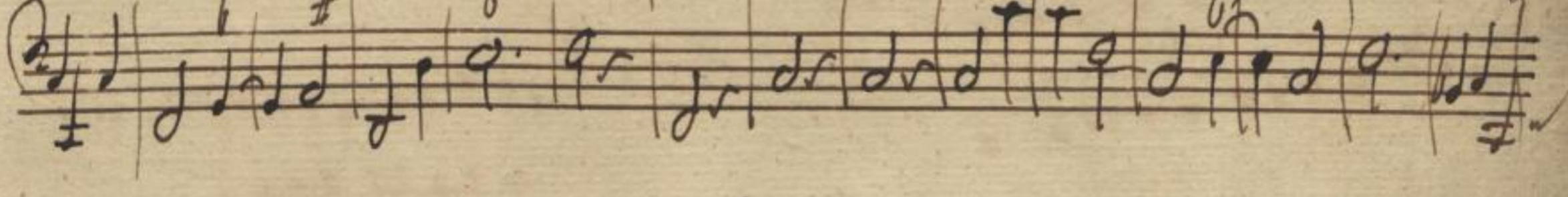
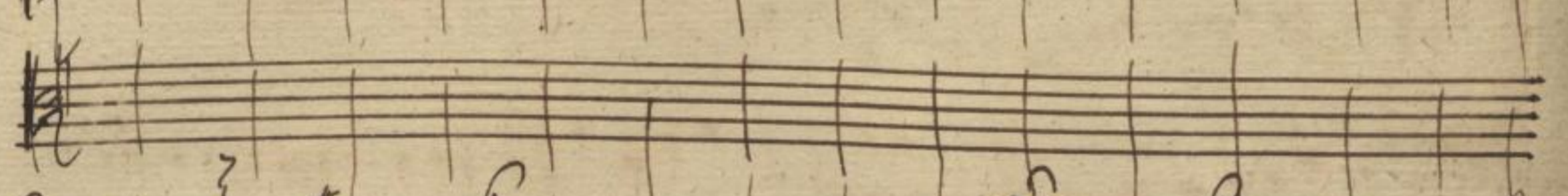
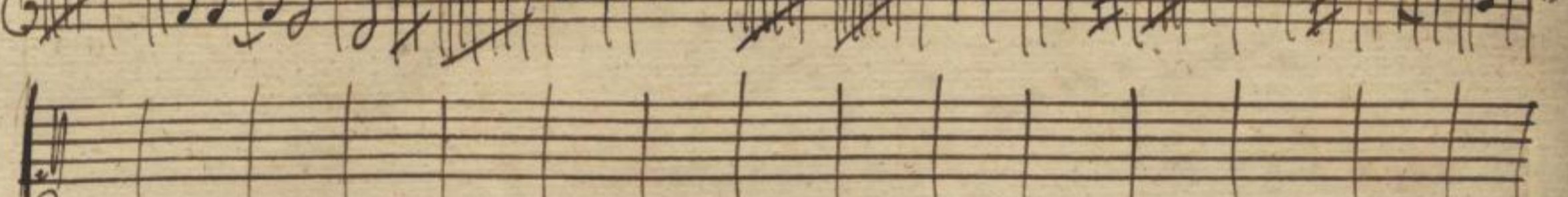
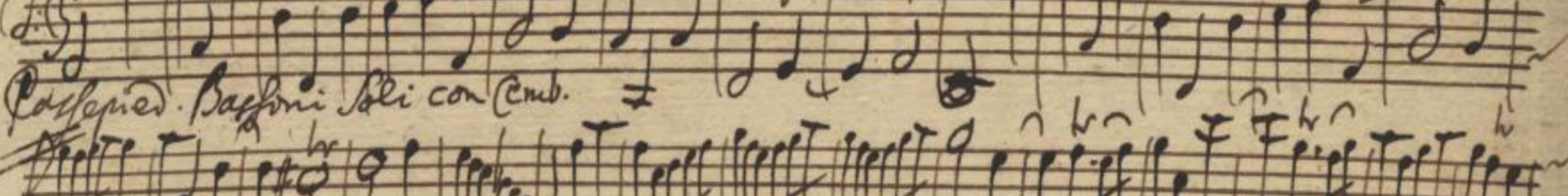
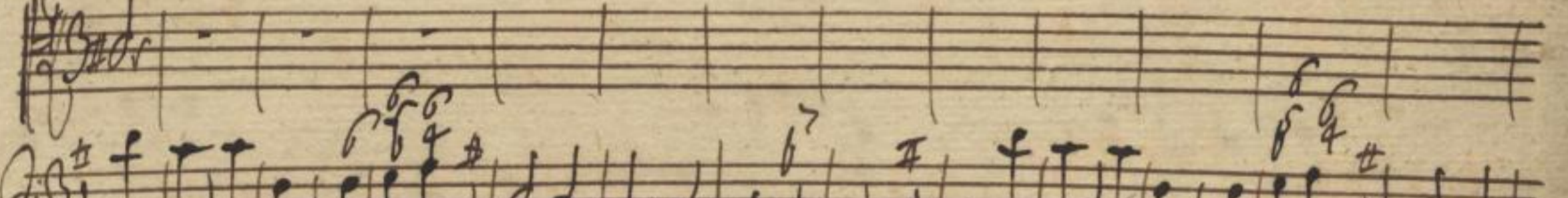
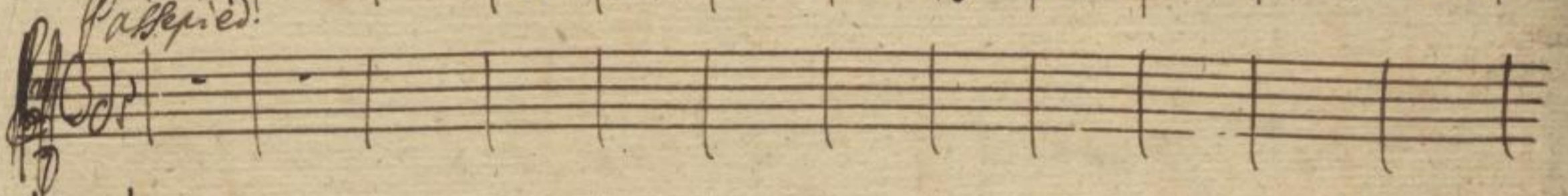
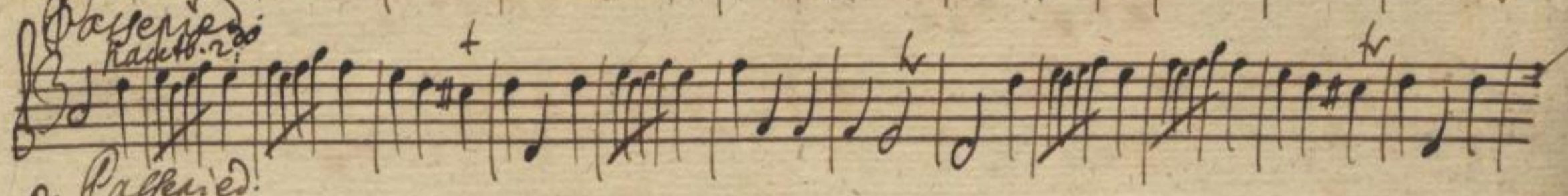
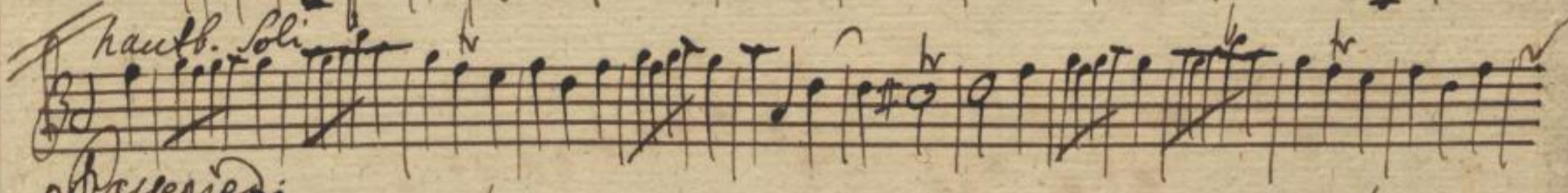
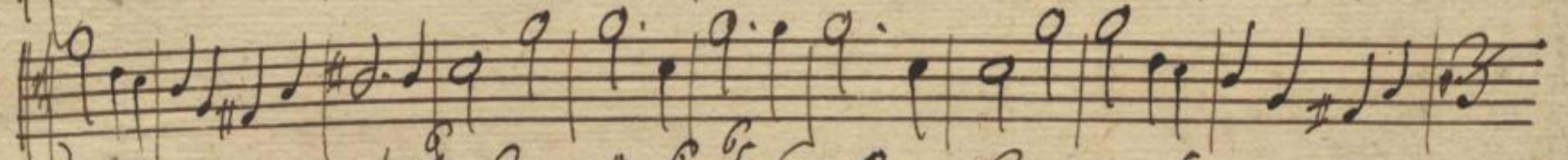
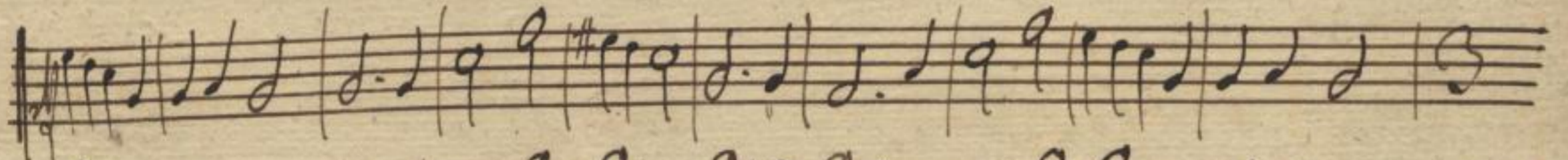
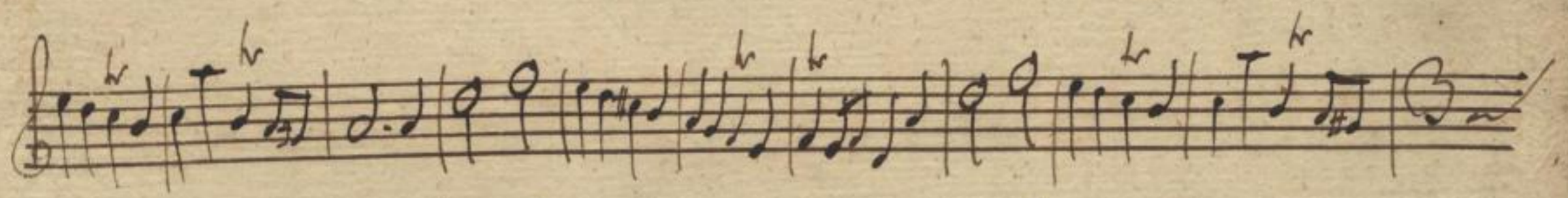
Musical staff with notes and dynamics (piano).

Raccone.



Handwritten musical score on aged paper, featuring multiple staves of music. The notation includes notes, rests, and dynamic markings such as *for.*, *forte.*, *piano*, and *for.*. The score is organized into systems, with some sections labeled *Rigaudon*. The paper shows signs of age, including discoloration and wear at the edges.





LA 1576

4 5



A page of handwritten musical notation on aged, yellowed paper. The page contains 12 staves of music, arranged in two systems of six staves each. The notation is dense and includes various musical symbols such as clefs, notes, rests, and dynamic markings. The word "Loure." is written in cursive below the eighth, ninth, and tenth staves. The paper shows signs of age, including some staining and uneven edges.

5

7

2 Hautbois. <sup>unisono</sup> *et sic*

*Musette. piano*

*Musette piano*

*piano*

*Musette*

*f*

*Hautb.*

This image shows a page of handwritten musical notation on aged, yellowed paper. The score consists of approximately 14 staves of music, written in a cursive hand. The notation includes various note values, rests, and dynamic markings. Several staves are labeled with the word "Sonate" written in a cursive hand. There are also some numerical annotations, such as "5 7" and "6 6", written above the notes. The paper shows signs of age, including some staining and irregular edges.

6  
9

A page of handwritten musical notation on aged, yellowed paper. The page contains approximately 14 staves of music. The notation is dense and includes various musical symbols such as notes, rests, accidentals (sharps and naturals), and dynamic markings (e.g., *f*, *p*, *z*). The handwriting is in dark ink and appears to be from the 18th or 19th century. The paper shows signs of wear, including creases and discoloration. At the bottom of the page, there are several empty staves.

Handwritten musical notation on three staves. The top staff contains a melodic line with various note values and rests. The middle and bottom staves contain dense, repetitive rhythmic patterns, possibly for a keyboard instrument. The notation is in dark ink on aged, yellowed paper.

9  
11

