

Schraner No. II.  
38. Fach 23. Lage.

No. 23. Sinfonia

Viol. Viola e Basso



Mus. 3005-N-5



1

Sächs.  
Landesbibl.





# Violino Primo

*Allegro*

*Dolce*

*forte*

*Dolce* *forte* *Dolce* *forte*

*Dolce*

*forte* *Dolce*

*forte*

## Volti Subito

Mus. 3005-N-5

(108 1540) (11-71)



1  
2

*Largo*  
*Tempo piano*

*Allegro*  
*as su.*

*piano*

*forte*

*Fine*

# Violino Secondo

*Allegro*

*dolce*

*forte*

*piano*

*forte*

*piano*

*forte*

*piano*

*forte*

*forte*

*Volti Subito*

Mus. 3005-N-5  
(M. # 1540)



2  
4

*Largo*  $\frac{3}{4}$  *sempre piano*

*Alllegro*  $\frac{3}{4}$  *allegro*

*piano* *forte*

*Fine*



# Violetta

*Allegro*  $\frac{2}{2}$   $\sharp$

*Largo*  $\frac{2}{2}$   $\flat$   $\frac{3}{4}$

*sempre piano*

*Volti Subito*

Sächs.  
Landes-  
Bibl.

3  
6

Mus. 3005-N-5  
(Nr 1540)

Allegro  
asolo

2# 3  
2 8

piano

forte

# Basfo.

*Allegro*  $\text{D}:\sharp$   $\text{C}$

*forte*

*dolce* *forte*

*piano*

*forte*

*piano* *forte* *piano*

*forte*

*Largo*  $\text{D}:\flat$   $\frac{3}{4}$

*sempre piano*

*Volti*

Co. 1540  
Mus. 3005-N-5

7  
10

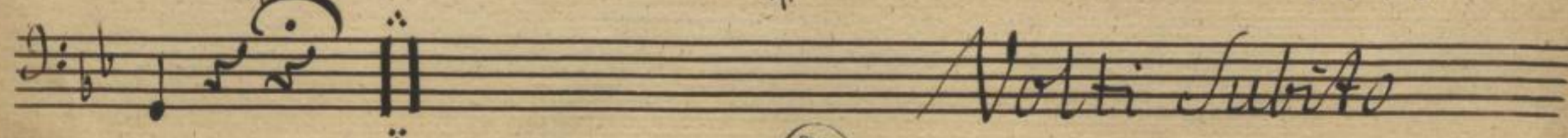
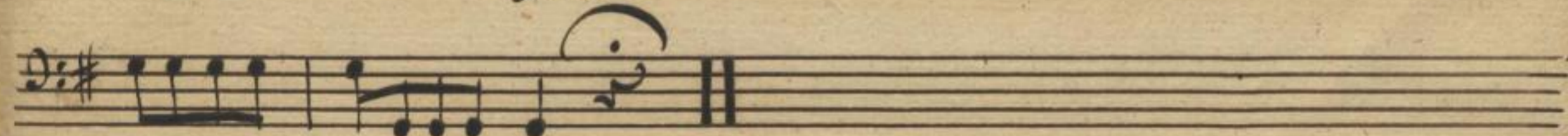
Sächs.  
Landes-  
bibl.

*Allegro*  
*aff.*

*piano*

*piano*

# Cembalo



Mus. 3005-N-5

(b. n. 1540)



5

8

*Allegro*  
*as/da.*

3  
8

*piano*

*forte*

9

# Basfeno.

*Allegro*  $\text{D}:\sharp$   $\text{C}$

*forte*

*dolce*  $\sharp$  *forte*

*pia.*

*forte*

*piano* *forte* *piano*

*forte*

*Largo*  $\text{D}:\flat$   $\frac{3}{4}$

*sempre piano*

*Volti Subito*

Mus. 3005-N-5  
(62 1540)

Sächs.  
Landes-  
Bibl.

4

12

Handwritten musical score on five staves. The first staff begins with the tempo marking *Allegro* and the dynamic marking *assai*. The key signature is one sharp (F#) and the time signature is 3/8. The notation includes various rhythmic values and accidentals. The fifth staff concludes with the dynamic marking *forte* and a double bar line. The sixth staff begins with the dynamic marking *piano* and contains a large scribbled-out section. The remaining staves are empty.



# Basfano.

*Allegro* 9:## C

*forte*

*Dolce* # *forte*

*piano*

*forte*

*piano*

*forte* *piano*

*forte*

*forte*

*Largo* 9:## 3/4 *sempre piano*

*sempre piano*

*sempre piano*

*sempre piano*

*sempre piano* *Volte Subito*

Mus. 3005-N-5  
(No 1540)

Sächs. Landesbibl.

14

*Allegro  
aslar.*

9: # 3/8

*piano*

*forte*

