

Allegro moderato.

Handwritten musical notation for the first system, featuring a treble clef, a key signature of two flats, and a 2/4 time signature. The music consists of a melody in the upper voice and a bass line in the lower voice, with various rhythmic patterns and dynamics.

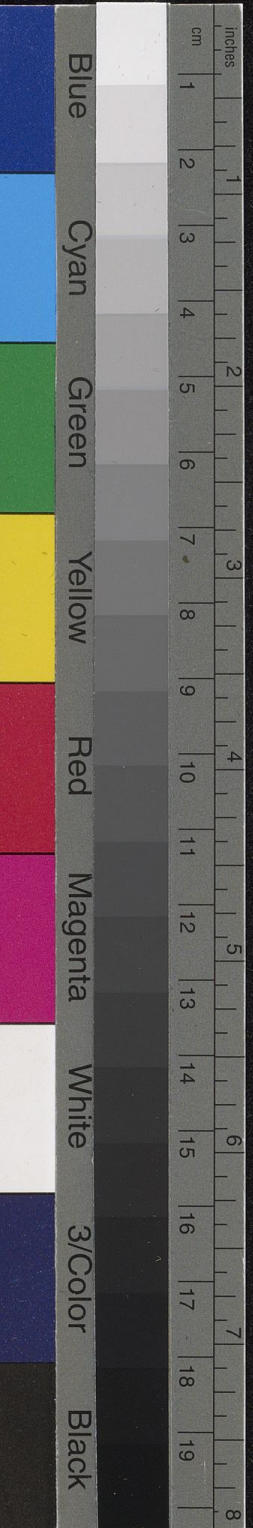
Handwritten musical notation for the second system, including a treble clef, a key signature of two flats, and a 2/4 time signature. It features a melody in the upper voice and a bass line in the lower voice, with "crescendo" markings and a "p" dynamic.

Handwritten musical notation for the third system, including a treble clef, a key signature of two flats, and a 2/4 time signature. It features a melody in the upper voice and a bass line in the lower voice, with "crescendo" markings.

Handwritten musical notation for the fourth system, including a treble clef, a key signature of two flats, and a 2/4 time signature. It features a melody in the upper voice and a bass line in the lower voice, with various rhythmic patterns.

Handwritten musical notation for the fifth system, including a treble clef, a key signature of two flats, and a 2/4 time signature. It features a melody in the upper voice and a bass line in the lower voice, with a "p" dynamic.

Empty musical staves at the bottom of the page.



Handwritten musical notation on a system of three staves. The top staff is in treble clef with a key signature of one flat and contains melodic lines with trills marked 'tr'. The middle staff is in treble clef with a key signature of one flat, featuring dense sixteenth-note passages. The bottom staff is in bass clef with a key signature of two flats, containing a bass line with chords and some triplets.

Handwritten musical notation on a system of three staves. The top staff is in treble clef with a key signature of one flat, showing melodic lines with trills. The middle staff is in treble clef with a key signature of one flat, containing dense sixteenth-note passages. The bottom staff is in bass clef with a key signature of two flats, featuring a bass line with chords and some triplets.

Handwritten musical notation on a system of three staves. The top staff is in treble clef with a key signature of one flat, containing melodic lines with trills. The middle staff is in treble clef with a key signature of one flat, featuring dense sixteenth-note passages. The bottom staff is in bass clef with a key signature of two flats, containing a bass line with chords and some triplets.

Handwritten musical notation on a system of three staves. The top staff is in treble clef with a key signature of one flat, showing melodic lines with trills. The middle staff is in treble clef with a key signature of one flat, containing dense sixteenth-note passages. The bottom staff is in bass clef with a key signature of two flats, featuring a bass line with chords and some triplets.

Handwritten musical notation on a system of three staves. The top staff is in treble clef with a key signature of one flat, containing melodic lines with trills. The middle staff is in treble clef with a key signature of one flat, featuring dense sixteenth-note passages. The bottom staff is in bass clef with a key signature of two flats, containing a bass line with chords and some triplets.

Empty musical staves at the bottom of the page.



Handwritten musical notation on a three-staff system. The top staff is in treble clef, the middle in alto clef, and the bottom in bass clef. The music features a melodic line in the upper staves and a more rhythmic accompaniment in the lower staff. A dynamic marking of *p.* (piano) is visible at the beginning of the first staff.

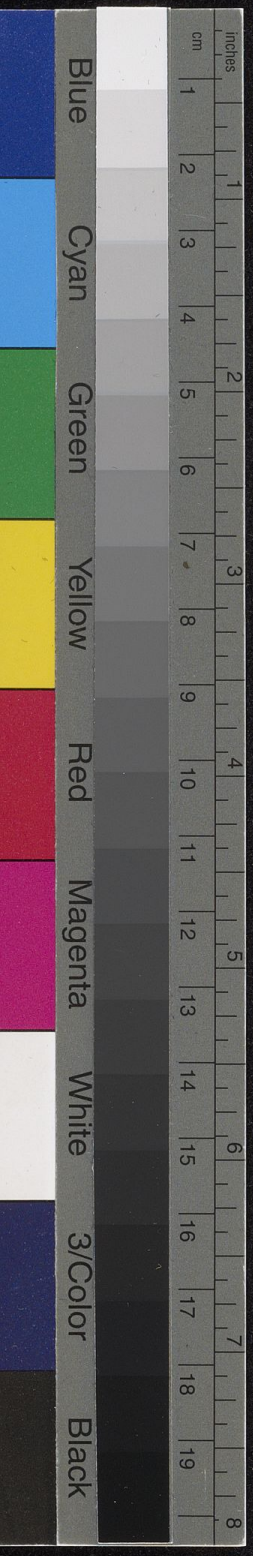
Handwritten musical notation on a three-staff system. The notation continues with various rhythmic patterns and melodic fragments. Dynamic markings include *crescen* and *crescendo* written in the right margin.

Handwritten musical notation on a three-staff system. This section includes several dynamic markings such as *tr.*, *cresc.*, and *f* (forte) scattered throughout the staves.

Handwritten musical notation on a three-staff system. The notation shows a continuation of the musical themes, with some complex rhythmic figures in the lower staff.

Handwritten musical notation on a three-staff system. The final system on the page shows a dense texture of notes, particularly in the lower staves, suggesting a climactic or concluding section.

Empty musical staves at the bottom of the page, indicating the end of the written music on this page.





Handwritten musical notation on a three-staff system. The top staff is in treble clef, the middle in alto clef, and the bottom in bass clef. The music features a complex melodic line in the upper staves and a more rhythmic accompaniment in the lower staff. Dynamic markings include *pp* and *p*. The notation is dense with many notes and rests.

Handwritten musical notation on a three-staff system. The notation continues from the previous system, showing intricate melodic patterns and rhythmic accompaniment. Dynamic markings include *pp* and *p*. The music is written in a complex, multi-measure style.

Handwritten musical notation on a three-staff system. The notation continues, featuring a mix of melodic and rhythmic elements. Dynamic markings include *p*. The music is written in a complex, multi-measure style.

Handwritten musical notation on a three-staff system. The notation continues, showing intricate melodic patterns and rhythmic accompaniment. Dynamic markings include *p*. The music is written in a complex, multi-measure style.

Handwritten musical notation on a three-staff system. The notation continues, featuring a mix of melodic and rhythmic elements. Dynamic markings include *p*. The music is written in a complex, multi-measure style.

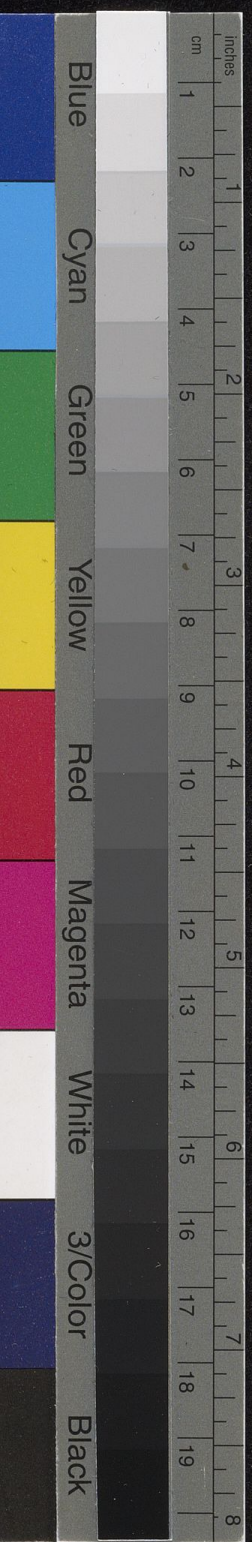
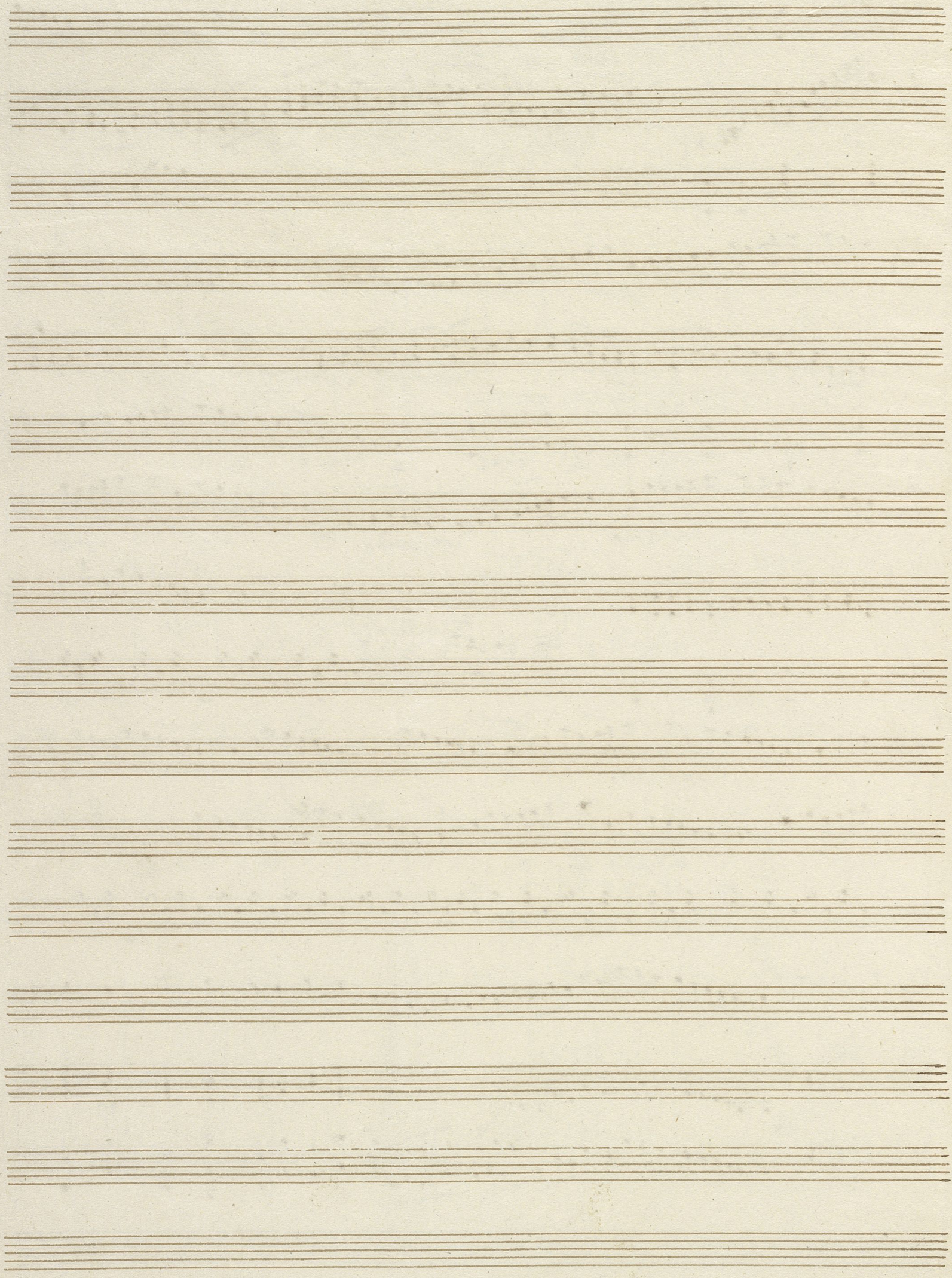
Empty musical staves at the bottom of the page, consisting of three blank staves.



Handwritten musical score on page 17, featuring multiple systems of staves with notes, rests, and dynamic markings such as "crescendo", "mf", and "p". The score includes various musical notations like clefs, time signatures, and articulation marks. A large, stylized flourish is visible at the bottom right of the page.

D. 17 April





This image shows a page of blank musical manuscript paper. The page is cream-colored and features 18 horizontal staves, each consisting of five parallel lines. The staves are arranged in a regular, repeating pattern across the page. There is no musical notation or other markings on the page.





