

Sonata 17/8
Adagio

d. n. y. G.

Clarinetto in b.

Pianoforte

crescendo. *accelerando* *accelerando* *crescendo* *p. f.*



Allegro moderato.



Handwritten musical notation on three staves. The top staff is in treble clef, the middle in alto clef, and the bottom in bass clef. The music features complex rhythmic patterns and dynamic markings such as "cresc" and ">".

Handwritten musical notation on three staves. The notation is dense with sixteenth and thirty-second notes. A dynamic marking "p" is visible on the bottom staff.

Handwritten musical notation on three staves. The music continues with intricate rhythmic figures and slurs.

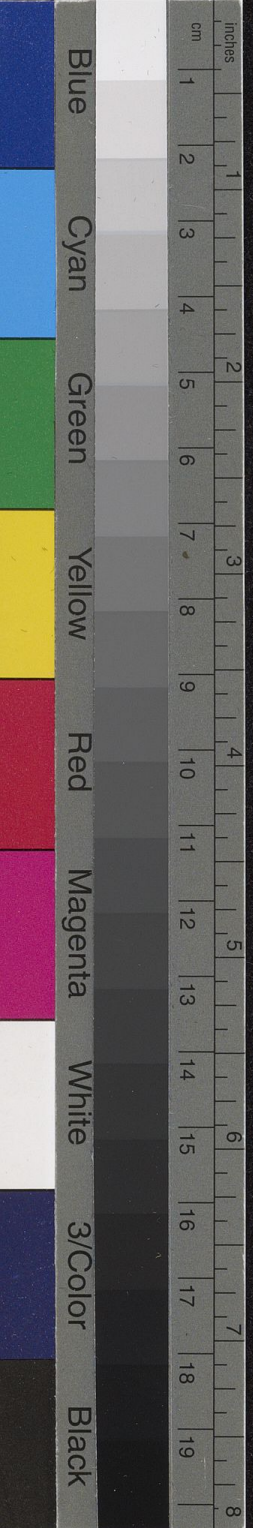
Handwritten musical notation on three staves. The notation shows a continuation of the complex rhythmic patterns.

Handwritten musical notation on three staves. The bottom staff begins with a dynamic marking "p".

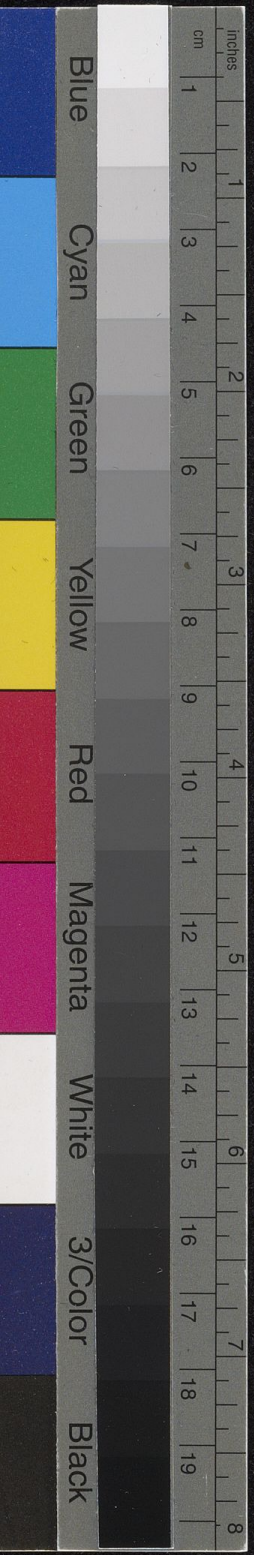


Handwritten musical score on aged paper, featuring multiple systems of staves. The notation includes treble and bass clefs, a key signature of two flats (B-flat and E-flat), and a 6/8 time signature. The score is marked with dynamic instructions such as *pp*, *tr*, *dim.*, *p*, *crescendo*, *crsf.*, and *diminuendo*. The music consists of several systems, each with two staves. The notation is dense, with many notes and rests. The paper shows signs of age, including some staining and discoloration.

I +



Handwritten musical score on aged paper, consisting of multiple systems of staves. The notation includes treble and bass clefs, various note values, rests, and dynamic markings such as *p*, *tempo i mo*, *mf*, *molto cresc.*, *arco*, and *dimp.*. The score is organized into systems, with some systems containing multiple staves. The handwriting is in dark ink, and the paper shows signs of age and wear.



This image shows a page of handwritten musical notation on aged, yellowed paper. The score is organized into four systems, each consisting of three staves. The notation includes treble and bass clefs, various note values (quarter, eighth, sixteenth notes), rests, and dynamic markings such as *pp* (pianissimo) and *f* (forte). The paper shows signs of age, including foxing and some staining. At the bottom of the page, there are several empty musical staves.



Handwritten musical notation on a five-line staff, featuring a treble clef and a key signature of two flats. The notation includes a series of eighth and sixteenth notes with stems, and some notes are marked with accents.

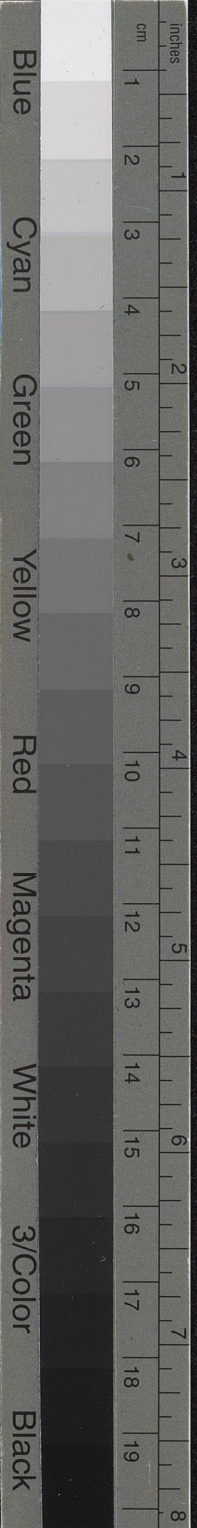
Handwritten musical notation on a five-line staff, featuring a treble clef and a key signature of two flats. The notation includes a series of eighth notes with stems, and some notes are marked with accents. A dynamic marking *dim. p* is present.

Handwritten musical notation on a five-line staff, featuring a treble clef and a key signature of two flats. The notation includes a series of eighth notes with stems, and some notes are marked with accents. Dynamic markings *p.*, *dim.*, and *ppp* are present.

Handwritten musical notation on a five-line staff, featuring a treble clef and a key signature of two flats. The notation includes a series of eighth notes with stems, and some notes are marked with accents. Dynamic markings *dim.* and *ppp* are present.

Handwritten musical notation on a five-line staff, featuring a treble clef and a key signature of two flats. The notation includes a series of eighth notes with stems, and some notes are marked with accents. Dynamic markings *p*, *cresc.*, and *f* are present. The word *accelerando* is written below the staff.

Handwritten musical notation on a five-line staff, featuring a treble clef and a key signature of two flats. The notation includes a series of eighth notes with stems, and some notes are marked with accents. Dynamic markings *f* and *ppp* are present. The word *Ped accelerando* is written below the staff.

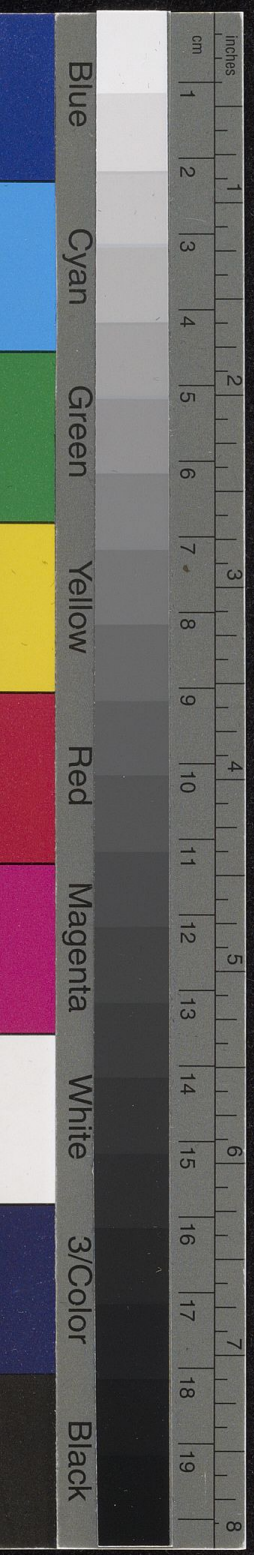


Andante.



Red

*il tempo ad libitum ma *semplice*



This image shows a page of handwritten musical notation on aged, yellowed paper. The page is numbered '11' in the top right corner. The music is arranged in several systems, each consisting of three staves: a top staff with a treble clef, a middle staff with a treble clef and a key signature of two flats (B-flat and E-flat), and a bottom staff with a bass clef and the same key signature. The notation includes various note values, rests, and dynamic markings such as 'dim' (diminuendo) and '*pp' (pianissimo). There are also some performance instructions like 'Ped' (pedal) and a large, sweeping line in the lower right system. The paper shows signs of age, including some staining and discoloration.

