

Sc. P. Fant. 58/184
Sig. *Marella*

QUARTO
PER
PIANOFORTE
DI
Giuseppe **MARTUCCI**
Op. 23

Prop. per tutti i paesi
44540 Fr. 4.

Dep. all'Estero - Ent. Sta. Hall.

RICORDI
MILANO - Napoli - LONDRA - Firenze - ROMA
23, Charles Street, Middlesex Hospital, W.

GIORNETTO DI MUSICA
PALERMO
VIA MACQUEDA N. 259.

émin
Op.
gra
mus
2me
N

irée
En

N°

14

1

1:

n C

une

rod

cie

min

rée:

le J

its

not

ert

os

od

rab

G

ng

an

H

So

Dé

p.

se

fill

ne,

S

4

n

o

o

o

o

o

o

o

o

o

o

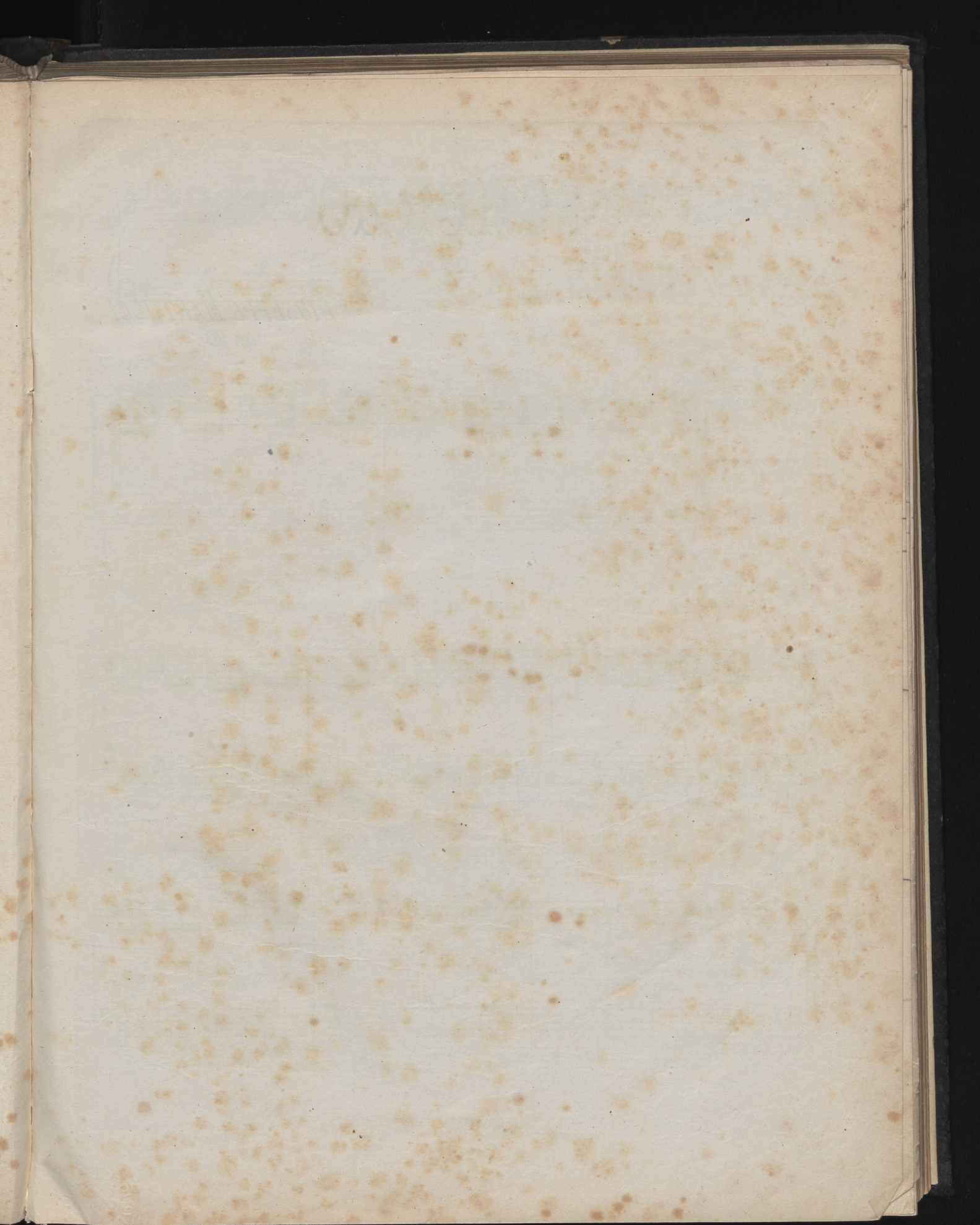
o

o

o

o

o



SCHERZO

GIUSEPPE MARTUCCI
Op. 23

PRESTO.

*La mano destra leggerissima
e la sinistra sempre staccato.*

diminuito di tono *allenta*

cresc. di tono *cresc. di tono*

pp

attenta precede di toni

diminuisce di toni³

Handwritten musical notation for the first system, consisting of a treble staff and a bass staff. The treble staff contains a series of chords, while the bass staff contains a melodic line with some rests.

attenta
diminuisce di toni

cresce di toni

attenta cresce di toni

Handwritten musical notation for the second system, including dynamic markings such as *cres.* and *p*. The notation continues with chords in the treble and a melodic line in the bass.

ripete la fase

cresce di toni

Handwritten musical notation for the third system, showing a continuation of the musical theme with chords and a melodic line.

cresce di toni

Handwritten musical notation for the fourth system, featuring a *cres.* marking. The notation continues with chords and a melodic line.

cresce di toni

rallentando

staccato

Handwritten musical notation for the fifth system, including dynamic markings such as *ff* and *p*. The notation concludes with chords and a melodic line.

staccato

8^a

8^a sotto

8^a sotto

8^a sotto

8^a sotto

ff

8^a sotto



émir
Op.
grai
mus
2me
N
irée
En
N°

H
1
I:
n C
tune
rod
cie
min
rée
le l
its
not

ort
los
d
era:
G
ni
an
H
So
Dé
p
se
fill
ne,
S
n
o

cresce & forte

8^a

ff

8^a

8^a sotto

3 4 12 15 3 1

1 2

3 1 2 1 4 1 4

forte

sempre

forte

ff

Moderato

8^a

ff

soluto

8^a sotto

System 1: Treble and bass clefs. Treble clef contains a melodic line with a fermata and a slur over a sequence of notes. Bass clef contains a bass line with a fermata and a slur over a sequence of notes. Handwritten annotations include "8^a sotto" in the bass clef, "h 10" above the treble clef, and "1 3 4 | 1 2 1 4" below the bass clef. The word "veloce" is written in the center.

System 2: Treble and bass clefs. Treble clef contains a melodic line with a fermata and a slur. Bass clef contains a bass line with a fermata and a slur. Handwritten annotations include "8^a sotto" in the bass clef, "h 10" above the treble clef, and "2 1 4 | 1 2 1 4" below the bass clef. The word "veloce" is written in the center.

System 3: Treble and bass clefs. Treble clef contains a melodic line with a fermata and a slur. Bass clef contains a bass line with a fermata and a slur. Handwritten annotations include "8^a sotto" in the bass clef, "h 8" above the treble clef, and "1 2 3 4" below the bass clef. There are faint handwritten notes in the right margin.

System 4: Treble and bass clefs. Treble clef contains a melodic line with a fermata and a slur. Bass clef contains a bass line with a fermata and a slur. Handwritten annotations include "8^a sotto" in the bass clef, "h 10" above the treble clef, and "1 2 1 2 3 4" below the bass clef. There are faint handwritten notes in the right margin.

émir
Op.
gru
mur
2me
N
irée
En
N°

H
L
L
n C
une
rod
cie
min
rée
de l
its
not

ert
los
od
era
G
éni
an
H
So
Dé
p-
se
fill
ne,
S
4
n
o

512413

Crise D'Amour

calando
deces.

p
pp

123
1343

émir
Op.
grat
mus
2me
N

irée
En
N°

ert
ros
od
tra
G
éni
an
H
So
Dé
p
se
fill
ae.

S
t
n
o

cres. sempre

f

ff *pp con sordine*

8

cres. *f* *ff*

8

512413

Handwritten annotations: 5 1 3 3

8^a sotto

This system contains the first two staves of music. The upper staff features a melodic line with a series of eighth notes and a triplet of eighth notes. The lower staff provides a harmonic accompaniment with chords and moving bass lines. A large slur encompasses the final measures of both staves.

Handwritten annotations: 3 h 3 h 8^a

8^a sopra

8^a sotto

ff e risoluto

This system contains the next two staves. The upper staff has a melodic line with a triplet of eighth notes and a series of eighth notes. The lower staff has a bass line with a triplet of eighth notes. A large slur covers the first part of the system. The instruction *ff e risoluto* is written in the right-hand margin.

This system contains the third and fourth staves. The upper staff has a melodic line with eighth notes and chords. The lower staff has a bass line with chords and eighth notes.

8^a

8^a

This system contains the fifth and sixth staves. The upper staff has a melodic line with eighth notes and chords. The lower staff has a bass line with chords and eighth notes. A large slur covers the first part of the system.

512413

émir
Op.
grai
mus
2me
N

irée
En

N°

t
t
l
l
l
n C
une
rod
cie
min
rée
le l
its
not

art
los
od
era
G
éni
an
H
So
Dé
p.
se
fill
ne,
S
t
n
e