



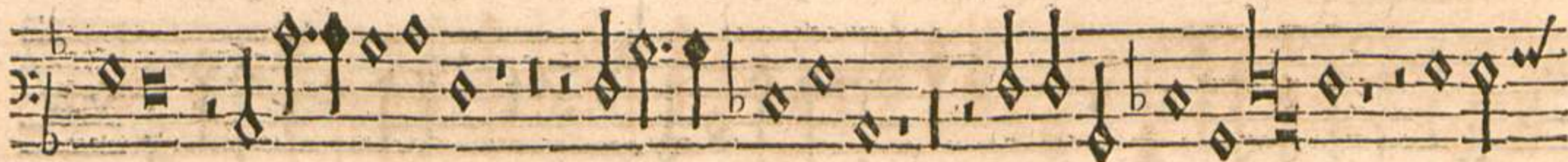
A s. Prima Pars.

XLII.

BASSVS.



Dite Casa reo ij Boiorum sanguine



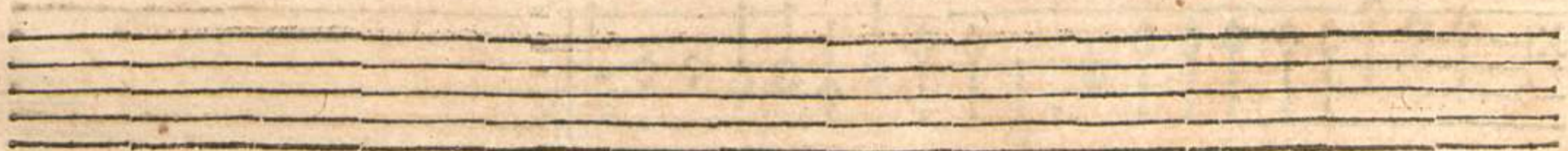
Princeps Bauariæ gentis ij spes colu menque domus hac æs



tate tibi quenquam pie tate secundum & uirtute parem & uirtute pa rem



non super esse puto ij non super esse pu to.



A s. Secunda Pars.

BASSVS.



First musical staff with bass clef and a common time signature. The melody consists of diamond-shaped notes with stems, typical of early printed music notation.

B scura sub nocte micans ut Cynthia uultus splendore exupea

Second musical staff, continuing the melody from the first staff.

rat astra minora suo non aliter Princeps Alberte ij excelsa

Third musical staff, continuing the melody.

lis auita ij uirtute illustres ij

Fourth musical staff, continuing the melody.

ac pie tate uiros. ij ij

Five empty musical staves at the bottom of the page.