

LADIES - POLKA VON KÉLER BÉLA. Op. 29.

TROMBA I in F.

Im mässigen Tempo.

Nº 1.

p *fz* *p* *f* *p* *fz* *p*

TRIO.

p *f* *p* *fz* *p* *fz* *p* *fz* *p* *fz*

FINALE.

p *fz* *p* *f* *p* *fz* *p* *fz* *p* *f* *stringendo.*

LADIES-POLKA VON KÉLER BÉLA Op. 29.

Im mässigen Tempo.

TROMBA II in F.

No 1.

Musical notation for the first section, consisting of a single staff. It begins with a treble clef and a 2/4 time signature. The first measure is marked with a piano (*p*) dynamic. The second measure is marked with a fortissimo (*ff*) dynamic. The piece includes first and second endings, indicated by the numbers 1 and 2 above the notes. The notation includes various rhythmic values such as eighth and sixteenth notes, and rests.

TRIO.

Musical notation for the Trio section, consisting of a single staff. It begins with a treble clef and a 2/4 time signature. The first measure is marked with a piano (*p*) dynamic. The piece includes first and second endings, indicated by the numbers 1 and 2 above the notes. The notation includes various rhythmic values such as eighth and sixteenth notes, and rests. Dynamics range from piano (*p*) to fortissimo (*ff*).

FINALE

Musical notation for the Finale section, consisting of a single staff. It begins with a treble clef and a 2/4 time signature. The first measure is marked with a piano (*p*) dynamic. The piece includes first and second endings, indicated by the numbers 1 and 2 above the notes. The notation includes various rhythmic values such as eighth and sixteenth notes, and rests. Dynamics range from piano (*p*) to fortissimo (*ff*).

stringendo.

Musical notation for the stringendo section, consisting of a single staff. It begins with a treble clef and a 2/4 time signature. The first measure is marked with a forte (*f*) dynamic. The notation includes various rhythmic values such as eighth and sixteenth notes, and rests.

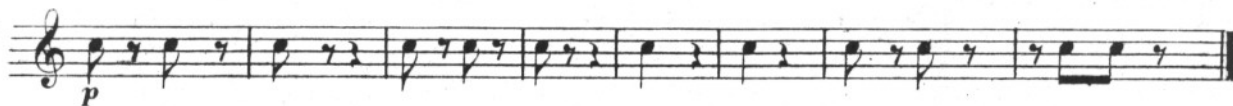
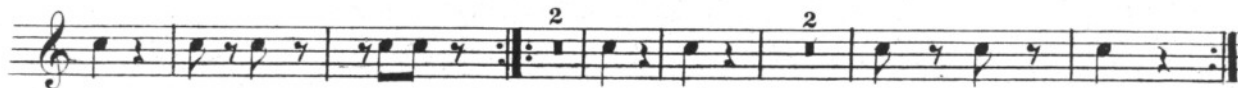
LADIES POLKA VON KÉLER BÉLA. Op. 29.

1

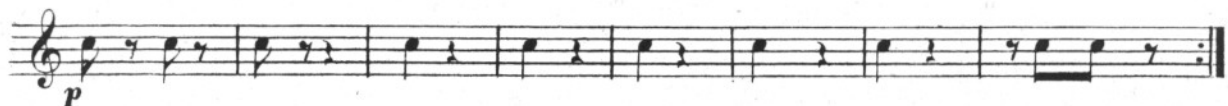
TRIANGEL.

Im mässigen Tempo.

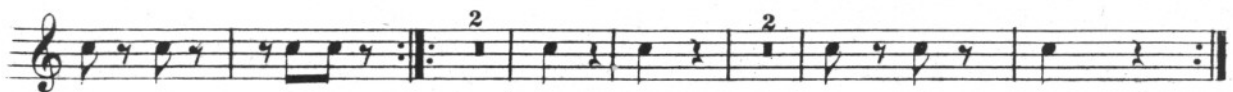
Nº 1.



TRIO.



FINALE.



LADIES - POLKA VON KÉLER BÉLA. Op. 29.

GRAN CASSA.

Im mässigen Tempo.

Nº 1.

1 8 2

fz *f*

1 1 2 8

TRIO.

8 1 2 8

f

FINALE.

1 8 1 2 8

fz *f*

1 1 2 8

1 1 2 8

ff

LADIES - POLKA VON KÉLER BÉLA OP.29.

TAMBOUR MILITAIR

Im mässigen Tempo .

Nº 1. 

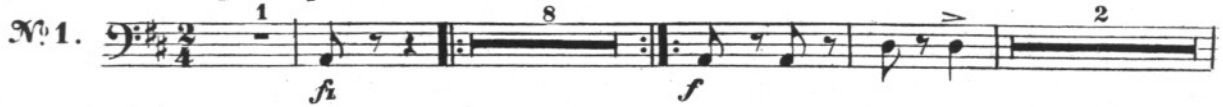
TRIO. 

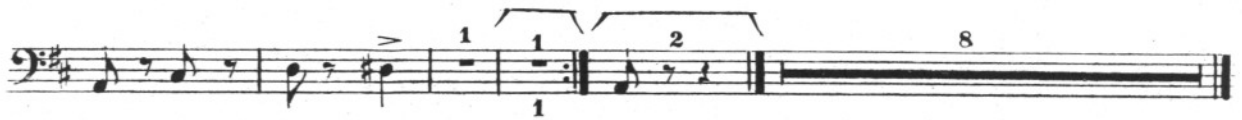
FINALE. 

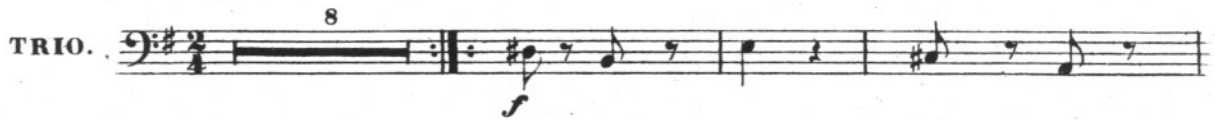
LADIES POLKA VON KÉLER BÉLA OP. 29.

TUBA.

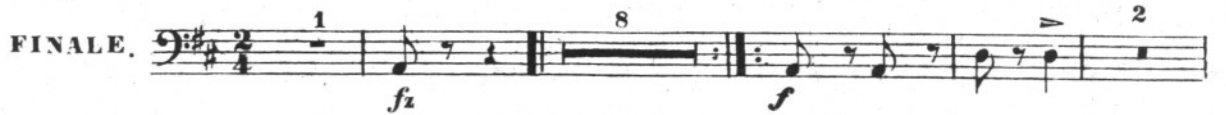
Im mässigen Tempo.

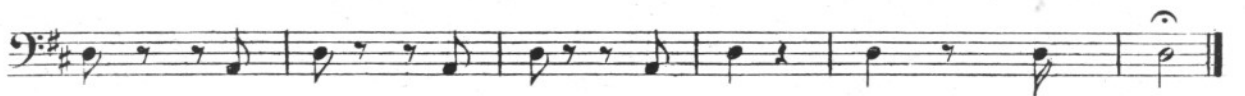
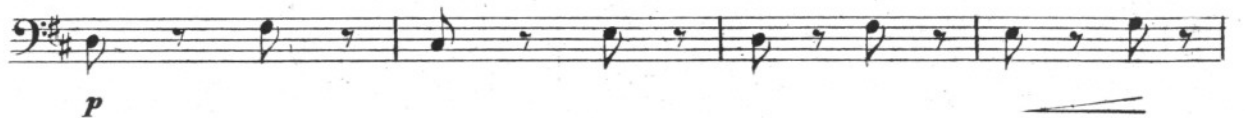
N^o 1. 



TRIO. 



FINALE. 



LADIES - POLKA VON KÉLER BÉLA. OP. 29.

1

TROMBONE.

Im mässigen Tempo.

N^o 1.

p *fz* *p* *f* *p* *fz* *p*

TRIO.

p *f* *p* *fz* *fz* *fz* *fz* *p*

FINALE.

p *fz* *p* *f* *p* *ff* stringendo.

LADIES-POLKA VON KÉLER BÉLA Op. 29.

CORNO III in F.

Im mässigen Tempo.

Nº 1.

p *fz* *p*

f *p* *fz* *p*

f *p* *fz* *p*

TRIO.

p

f *p*

fz *fz* *fz* *fz*

FINALE.

p *fz* *p*

f *p* *f*

p *fz* *p*

p

stringendo

f

LADIES - POLKA VON KÉLER BÉLA. Op. 29.

1

VIOLINO I.

Im mässigen Tempo.

Nº 1.

TRIO.

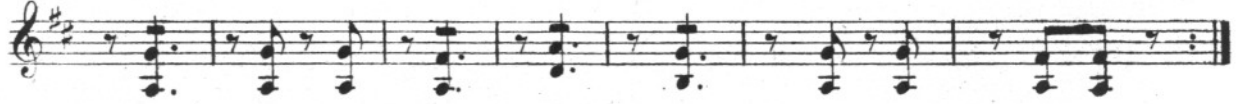
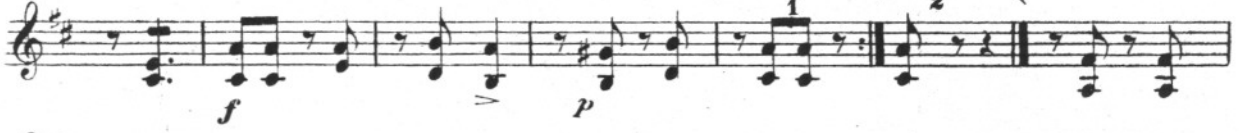
FINALE.

LADIES - POLKA VON KÉLER BÉLA Op.29.

VIOLINO II.

Im mässigen Tempo.

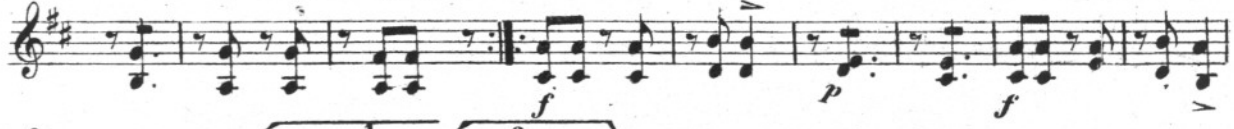
N^o 1. 



TRIO. 



FINALE. 



LADIES POLKA VON KÉLER BÉLA OP29.

VIOLA.

Im mässigen Tempo.

N^o 1.

First section of the piece, consisting of four staves. The first staff is a single line with a treble clef, a key signature of one sharp (F#), and a time signature of 2/4. It contains a melodic line with dynamics *p*, *fz*, and *p*. The second, third, and fourth staves are grand staves (treble and bass clefs) with a key signature of one sharp and a time signature of 2/4. They contain accompaniment with dynamics *f* and *p*. The third staff includes first and second endings marked with '1' and '2'.

TRIO.

Trio section, consisting of three staves. The first staff is a single line with a treble clef, a key signature of one sharp, and a time signature of 2/4. It contains a melodic line with dynamics *p* and *f*. The second and third staves are grand staves with a key signature of one sharp and a time signature of 2/4. They contain accompaniment with dynamics *f* and *p*.

FINALE.

Finale section, consisting of five staves. The first staff is a single line with a treble clef, a key signature of one sharp, and a time signature of 2/4. It contains a melodic line with dynamics *p* and *fz*. The second, third, fourth, and fifth staves are grand staves with a key signature of one sharp and a time signature of 2/4. They contain accompaniment with dynamics *p*, *f*, and *ff*. The fifth staff includes first and second endings marked with '1' and '2'. The section concludes with the instruction *stringendo.* and a double bar line.

LADIES POLKA VON KÉLER BÉLA Op.29.

VIOLONCELLO.

Im mässigen Tempo.

Nr. 1. *p* *pizz.* *arco.* *f* *pizz.*

TRIO. *p* *arco.* *f* *pizz.*

fi *fi* *fi* *fi* *fi*

FINALE. *p* *pizz.* *f* *arco.* *pizz.* *arco.*

1 *2* *pizz.* *arco.* *cres.* *stringendo.* *f*

LADIES - POLKA VON KÉLER BÉLA. Op. 29.

BASSO.

Im mässigen Tempo.

Nº 1.

p *f* *p* *f* *p*

TRIO.

p *p* *p*

FINALE.

p *f* *p* *f* *f* stringendo.

LADIES-POLKA VON KÉLER BÉLA Op.29.

FLAUTO

Im mässigen Tempo

N.º 1. 

TRIO. 

FINALE. 

LADIES - POLKA VON KÉLER BÉLA. OP. 29.

1

Im mässigen Tempo.

PICCOLO.

N^o 1.

p < *fz* *p*

f *p* *f*

p

TRIO.

p

f

f

FINALE.

p < *fz* *p* *f*

p *f* *p*

p

f stringendo.

LADIES POLKA VON KÉLER BÉLA OP. 29.

1

Im mässigen Tempo.

CLARINETTO I in C.

Nº 1.

TRIO.

FINALE.

stringendo

ff

LADIES - POLKA VON KÉLER BÉLA. OP. 29.

CLARINETTO II in C.

Im mässigen Tempo.

Nº 1.

First staff of the first section, marked piano (p). The key signature is one sharp (F#) and the time signature is 2/4. The staff contains a melodic line with a repeat sign and a first ending bracket.

Second staff of the first section, marked forte (f). The staff continues the melodic line with a first ending bracket.

Third staff of the first section, marked piano (p). The staff continues the melodic line with a second ending bracket.

TRIO.

First staff of the Trio section, marked piano (p). The key signature changes to natural (C) and the time signature is 2/4. The staff contains a melodic line with a repeat sign and a first ending bracket.

Second staff of the Trio section, marked forte (f). The staff continues the melodic line with a piano (p) dynamic marking.

Third staff of the Trio section. The staff continues the melodic line.

FINALE.

First staff of the Finale section, marked piano (p). The key signature is one sharp (F#) and the time signature is 2/4. The staff contains a melodic line with a repeat sign and a first ending bracket.

Second staff of the Finale section, marked forte (f). The staff continues the melodic line with a first ending bracket.

Third staff of the Finale section, marked piano (p). The staff continues the melodic line with a second ending bracket.

Fourth staff of the Finale section, marked piano (p). The staff continues the melodic line.

Fifth staff of the Finale section, marked forte (f) and stringendo. The staff continues the melodic line.

LADIES - POLKA VON KÉLER BÉLA. OP. 29.


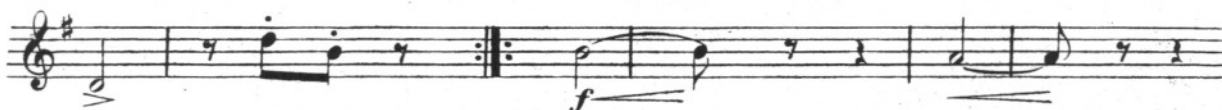
OBOE.

Im mässigen Tempo.

Nº 1. 



TRIO. 



FINALE. 



LADIES - POLKA VON KÉLER BÉLA. Op. 29.

FAGOTTO.

Im mässigen Tempo.

N^o 1. 

TRIO. 

FINALE. 

LADIES-POLKA VON KÉLER BÉLA OP. 29.

1

Im mässigen Tempo.

CLARINETTO I in C.

Nº 1.

TRIO.

FINALE.

stringendo

ff

LADIES - POLKA VON KÉLER BÉLA. Op. 29.

CORNO I in F.

Im mässigen Tempo.

Nº 1.

p *f* *p* *f* *p*

TRIO.

p *f* *p* *fz* *fz*

FINALE.

p *f* *p* *f* *p* *f* *p* *f* *p* *f* *stringendo.*

