

**GRAND DUO**

**BRILLANT**

*pour deux Violons*

composé

par

**J. W. KALLIWODA.**

OP. 234.

Pr. 3 Mk. 50 Pf.

*Propriété de l'Éditeur*

**LEIPZIG, J. RIETER-BIEDERMANN.**

*Ent. Stat. Hall.*

Violino I.

# Grand Duo brillant.

Allegro brillante.

J.W. Kalliwoda. Op. 234.

Violino I.

The musical score for Violino I consists of ten staves of music. The first staff begins with a treble clef, a key signature of two sharps (F# and C#), and a 2/4 time signature. It features a melodic line with several trills (tr) and a dynamic marking of *p*. The second staff is marked *brillante* and *f*, showing a more rhythmic and technically demanding passage. The third and fourth staves continue the melodic and rhythmic development. The fifth staff includes the dynamic marking *f* and *p*. The sixth staff has the dynamic marking *cre*. The seventh staff includes the dynamic marking *f* and the words *scen* and *do*. The eighth staff features a long, sweeping melodic line with a dynamic marking of *f*. The ninth staff has a dynamic marking of *f*. The tenth staff concludes the page with a melodic line.

Violino I.

This page of a musical score for Violino I contains ten staves of music. The notation includes various dynamics such as *pp*, *p*, *f*, *ff*, and *mf*, as well as performance instructions like *cre*, *scen*, and *sul G*. The music features complex rhythmic patterns, including triplets and sixteenth-note runs, and is characterized by frequent use of slurs and accents. The key signature is D major, and the time signature is 4/4. The score concludes with a first ending bracket and a fermata over the final measure.

Violino I.

*dolce*

*p*

*f*

*p*

*f*

*cre - scen - do*

*ff*

*p*

*ff*

*sempreff*

The musical score for Violino I consists of ten staves of music. The first staff begins with the tempo marking *dolce*. The second staff has a dynamic marking of *p*. The third staff has a dynamic marking of *p*. The fourth staff has a dynamic marking of *f*. The fifth staff has a dynamic marking of *f* and includes the lyrics *cre - scen - do*. The sixth staff has a dynamic marking of *ff*. The seventh staff has a dynamic marking of *p*. The eighth staff has a dynamic marking of *ff*. The ninth staff has a dynamic marking of *sempreff*. The tenth staff continues the musical notation.

Violino I.

Adagio non tanto.

*con molto espressione.*

*p* *pp* *f* *pp* *sf* *p* *ritard.* *f* *ritard.* *p* *ritard.*

Violino I.

*p* *f* *p* *f*  
*p* *ff* *con tutta la forza.*  
*pp* *p* *f* *ritard.* *dinain.* *pp*

The musical score for Violino I consists of ten staves of music. The first staff begins with a piano (*p*) dynamic, followed by a forte (*f*) dynamic, and then returns to piano (*p*). The second staff starts with forte (*f*), then piano (*p*), and continues with a series of sixteenth-note patterns. The third staff is marked forte (*f*). The fourth staff begins with piano (*p*), then moves to fortissimo (*ff*) with the instruction "con tutta la forza." and features a triplet of sixteenth notes. The fifth staff continues with sixteenth-note patterns. The sixth staff has a forte (*f*) dynamic. The seventh staff is marked piano-piano (*pp*). The eighth staff starts with piano-piano (*pp*), then piano (*p*), and then forte (*f*). The ninth staff begins with piano-piano (*pp*), followed by a ritardando (*ritard.*) section, then a diminuendo (*dinain.*) section, and ends with piano-piano (*pp*).

Scherzo.  
Allegro assai.

Violino I.

*ff*  
*p*  
*f*  
*p*  
*f*  
*ff*  
*p*  
*f*

Trio.

*dolce*  
*f*  
*p*  
*f*

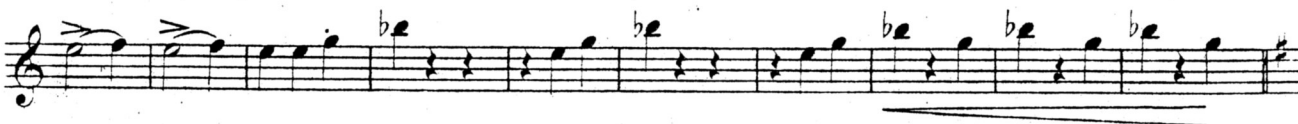
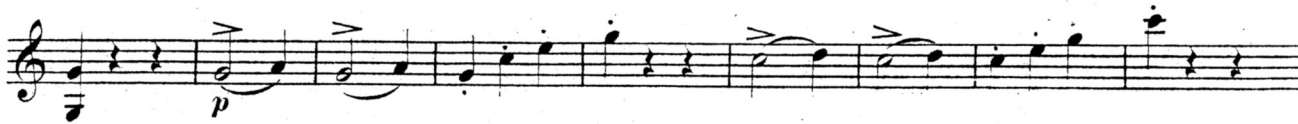
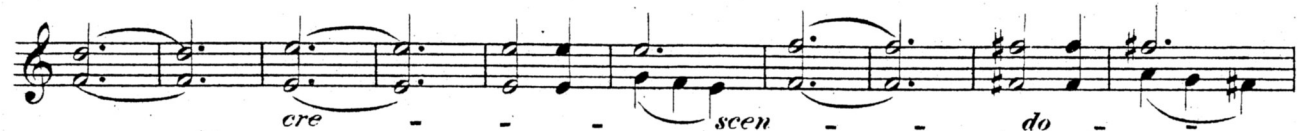
1. 2.

cre - - - scen - - -

1. *do* - - *ff*



Violino I.



Violino I.

The image displays a musical score for Violino I, consisting of ten staves of music. The score is written in treble clef with a key signature of one sharp (F#) and a common time signature (C). The music features a variety of dynamic markings and articulations. The first staff begins with a fortissimo (ff) dynamic and includes accents. The second staff has a piano (p) dynamic followed by a fortissimo (f) dynamic and a first ending bracket. The third staff contains a long, flowing melodic line. The fourth staff starts with a piano (p) dynamic and includes a first ending bracket. The fifth staff begins with a fortissimo (f) dynamic. The sixth staff features a fortissimo (ff) dynamic towards the end. The seventh staff includes accents and a fortissimo (ff) dynamic. The eighth staff has piano (p) and fortissimo (f) dynamics. The ninth staff includes accents. The tenth staff concludes with a fortissimo (ff) dynamic. The notation includes slurs, accents, and various rhythmic values.

Violino I.

Vivace.

The musical score for Violino I consists of ten staves of music. The key signature is three sharps (F#, C#, G#) and the time signature is 2/4. The piece begins with a *Vivace* tempo. The first staff starts with a forte (*f*) dynamic and features a series of sixteenth-note runs. The second staff includes a piano (*p*) dynamic and a trill (*tr*) on the final note of the first measure. The third staff marks a change in tempo with *ritard. a Tempo.* and includes a forte (*f*) dynamic. The fourth staff continues with a forte (*f*) dynamic. The fifth staff features a fortissimo (*ff*) dynamic. The sixth staff includes a mezzo-forte (*mf*) dynamic. The seventh staff features a forte (*f*) dynamic. The eighth staff includes a piano (*p*) dynamic. The ninth staff features a forte (*f*) dynamic. The tenth staff concludes with a piano (*p*) dynamic.

Violino I.

This page of a musical score for Violino I consists of ten staves of music. The key signature is three sharps (F#, C#, G#) and the time signature is 3/4. The music features a variety of rhythmic patterns, including sixteenth-note runs, eighth-note passages, and quarter-note chords. Dynamics are indicated by *f*, *p*, and *ff*. Performance instructions include *ritard.* and *a Tempo.* The score concludes with a final cadence on the tenth staff.

Violino I.

*ritard.* a Tempo.

*f*

*mf*

*p* *f*

*p*

*ff*

*tr* *tr* *tr*

*ritard.* a Tempo.

*sempre ff*