

A Dirge for Two Veterans
for Male Voices, Brass and Drums.

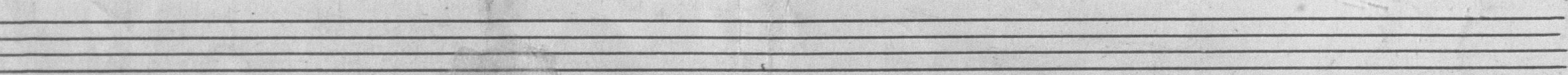
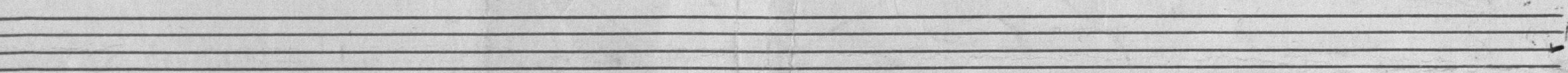
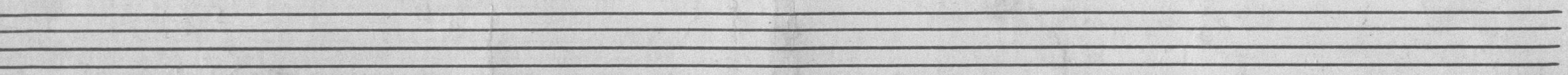
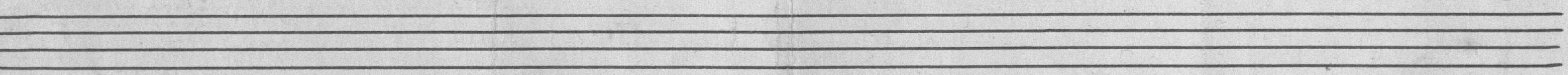
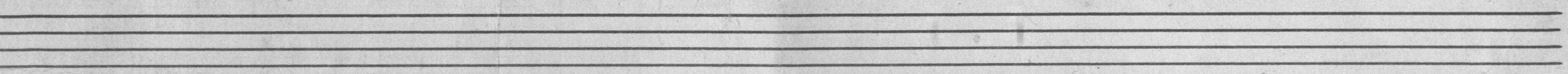
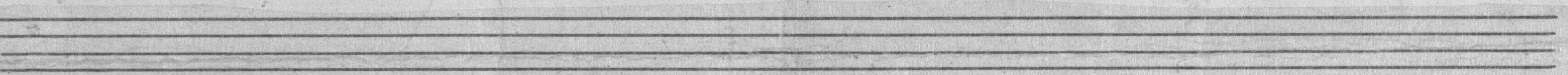
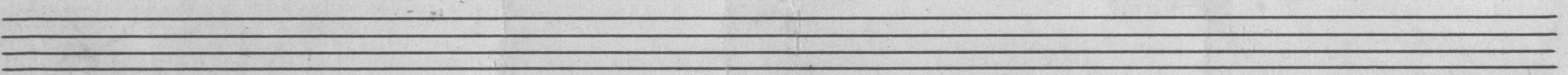
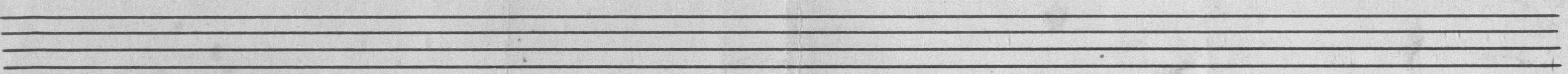
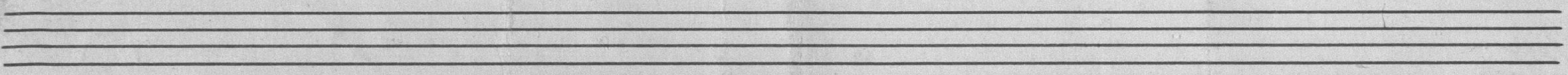
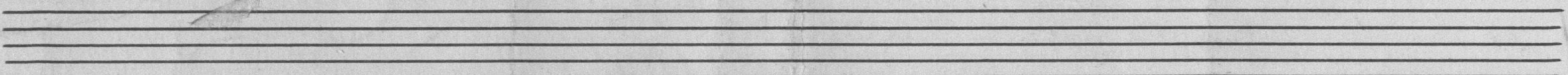
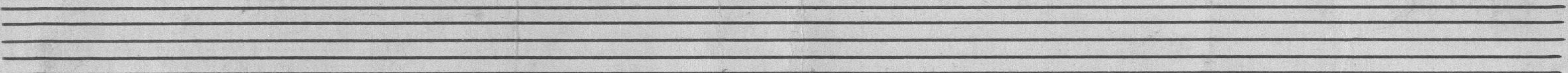
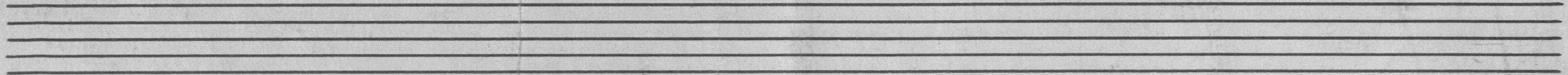
Words by Walt Whitman

Music by Gustav von Holst

(C. R. 5051+2)

Three cornets in B^b, two bombardons, side drum and ^{bass} big drum are required. If preferred a trombone may be substituted for one bombardon or (in a concert room) cellos and string basses may be used instead of the two bombardons. In either case a few notes towards the end must be omitted by trombone or cellos where the part goes below their compass.

PHILADELPHIA
E.D.



Transposed into C. One tone higher

C minor
Bb minor
Andante Mesto

Tenors

Baritone

The last sunbeam lightly falls from the finished Sabbath On the pavement here,

Piano

Andante Mesto

Small notes
B minor
A minor

and there beyond it is looking Down a new-made double grave

p
Ab minor
F# major

Lo, the moon ascending Up from the east the silvery round moon Beau-

p
Ab minor
F# major

PHILHARMONIC
 E.D.

In engraving put this passage in Ab minor not G# major
 (Enharmonic change)

In engraving put small notes of the notes here to show the enharmonic change

C# minor
B minor

Dim

- tiful over the house-tops, ghostly, phantom moon, Immense and si

F
Eb major

- lent moon.

large notes

3rd trumpet

large notes
Bombardons.

1st and 2nd trumpets

2

C
Bb

p

And I hear the sound of coming full-eyed

I see a sad procession

bugles All the channels of the city streets they're flooding us with

voices and with tears I hear the great drums pounding and the

Side Drum p

Big Drum p

cresc. poco a poco

cresc. poco a poco

cresc. poco a poco

Fine
Et mmo

And ev'ry blow of the great con-

small drums steady whirling

And ev'ry blow of the

And ev'ry blow of the great con-

This system contains the first two staves of music. The top staff is a vocal line with lyrics. The second staff is a piano accompaniment line. The music is in a key with two flats and a 3/4 time signature. The lyrics are: "And ev'ry blow of the great con-".

-vil - sine drums

great convulsive drums strikes me through and through

-vil - sine drums

This system contains the next two staves of music. The top staff is a vocal line with lyrics. The second staff is a piano accompaniment line. The lyrics are: "great convulsive drums strikes me through and through".

For the son is brought with the father (In the

Dim

Dim

pp 3/4

This system contains the final two staves of music. The top staff is a vocal line with lyrics. The second staff is a piano accompaniment line. The lyrics are: "For the son is brought with the father (In the". The system ends with a dynamic marking of "pp" and a time signature change to "3/4".

foremost ranks of the fierce assault they fell, Two veterans son and

mf

mf

father dropt to-gether And the double grave a-waits them.)

pp

pp

4 3rd Trumpet

Now nearer blow the bugles And the drums strike more con-

cres poco a poco

cresc. poco a poco

cres.

- outline And the daylight over the pavement quite has fed - ed,

cres.

cres

cres

DE

And the strong dead march en-
And the strong dead march en-
And the strong dead march en-
And the strong dead march en-

f

F Eb ff

- wraps me

ff

ff

ff

ff strong dead march you please me O moon immense with your

Dim

This system contains the first two systems of a handwritten musical score. The top system features a vocal line in treble clef and a piano accompaniment in bass clef. The vocal line begins with a fortissimo (*ff*) dynamic and includes the lyrics "strong dead march you please me O moon immense with your". The piano accompaniment consists of chords and some melodic fragments. The system concludes with a *Dim* (diminuendo) marking.

mp *G B A b*

silvery face you soothe me O my soldiers

mp

This system contains the third and fourth systems of the score. The vocal line continues with the lyrics "silvery face you soothe me O my soldiers". The piano accompaniment includes a triplet of eighth notes in the right hand and a triplet of eighth notes in the left hand. Dynamics include *mp* (mezzo-piano) and *pp* (pianissimo). The system ends with a *Dim* marking.

Dim

twin. O my veterans passing to burial What I have, I

pp

Dim

pp

pp

(one player only)

This system contains the fifth and sixth systems of the score. The vocal line concludes with the lyrics "twin. O my veterans passing to burial What I have, I". The piano accompaniment features a triplet of eighth notes in the right hand and a triplet of eighth notes in the left hand. Dynamics include *pp* (pianissimo) and *Dim* (diminuendo). The system ends with a *pp* marking and the instruction "(one player only)".

C
Bb

also give you. The moon gives you light And the

p

small notes

This system contains the first two lines of the handwritten musical score. The top line is a vocal line in treble clef with lyrics 'also give you. The moon gives you light And the'. The bottom line is a piano accompaniment in bass clef. A dynamic marking '*p*' is written above the vocal line. A handwritten note 'small notes' is written in a box above the piano accompaniment.

trumpets and the drums give you music And my heart

B minor
A minor

A minor (C)
G minor (Bb)

2

This system contains the second two lines of the handwritten musical score. The top line is a vocal line in treble clef with lyrics 'trumpets and the drums give you music And my heart'. The bottom line is a piano accompaniment in bass clef. There are handwritten notes for 'B minor', 'A minor', 'A minor (C)', and 'G minor (Bb)'. A measure rest '2' is written in the piano part.

my soldiers, my veterans, My heart gives you

This system contains the final two lines of the handwritten musical score. The top line is a vocal line in treble clef with lyrics 'my soldiers, my veterans, My heart gives you'. The bottom line is a piano accompaniment in bass clef. The system ends with a double bar line and some scribbles.

love.

Handwritten musical score for the first system. It consists of four staves. The top two staves are vocal lines, with the word "love." written under the first staff. The bottom two staves are piano accompaniment. The music is in a key with two flats (B-flat and E-flat) and a common time signature. The piano part includes dynamic markings such as *pp* and *ppp*, and a bracketed instruction "[large notes]" above the first few measures. The notation includes various note values, rests, and articulation marks.

Ionic Solfa Edition price.

Handwritten musical score for the second system. It consists of four staves. Each staff contains a single note, likely representing a scale or a specific interval. The notes are placed on the lines of the staves. The system is titled "Ionic Solfa Edition price." in cursive. There is a handwritten "4/8" time signature and a "2" below the first staff.

Four empty musical staves, each consisting of five lines, arranged vertically. They are currently blank.