

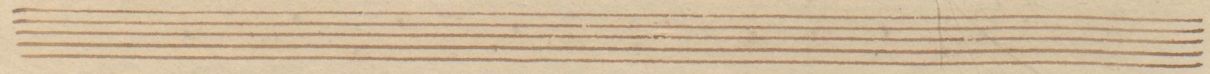
und die zu versetzen — — am Pflanz — und die

die für immer und für immer — —

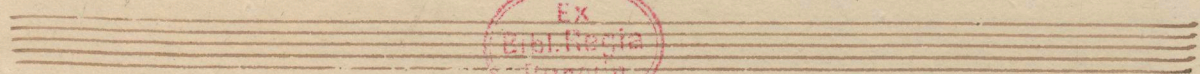
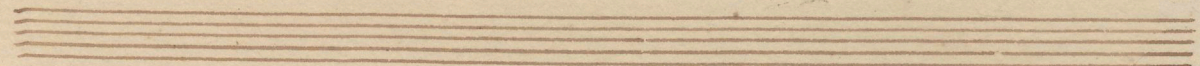
Baden den 13^{ten} August 37.

Moderato. Etüde für Pianoforte.

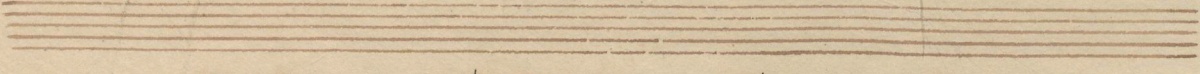
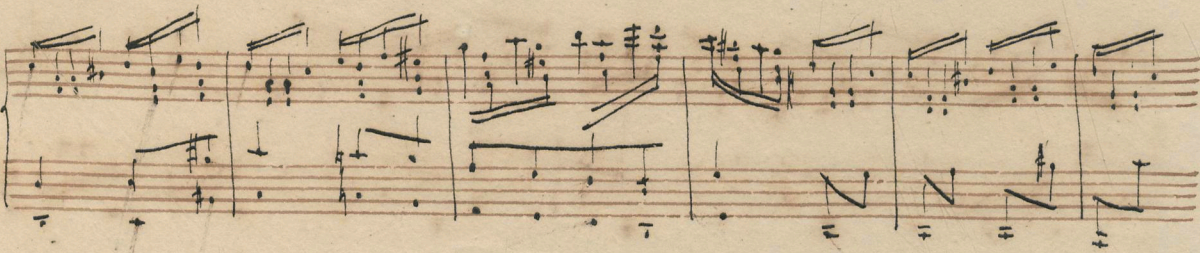
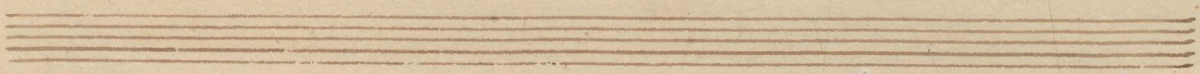
5



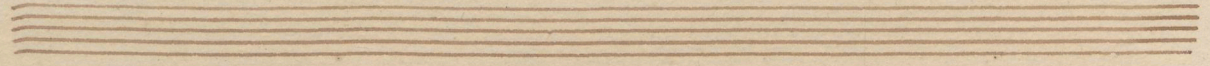
15



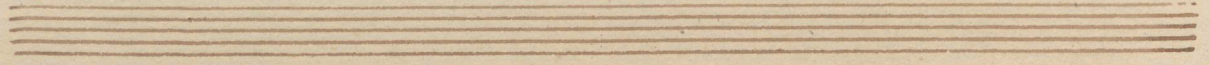
EX
BIBLIOTHECA
MUSICA



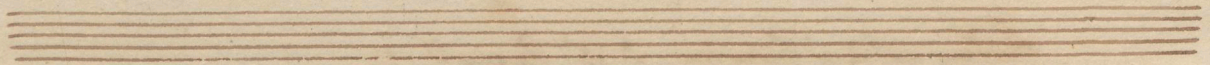
Handwritten musical notation on a two-staff system. The upper staff contains a series of chords and melodic fragments, while the lower staff features a more rhythmic line with slurs and accents.



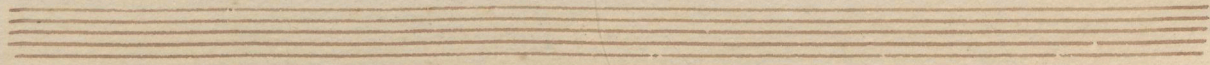
Handwritten musical notation on a two-staff system. The upper staff shows complex chordal structures, and the lower staff has a melodic line with various ornaments and slurs.



Handwritten musical notation on a two-staff system. The upper staff features a melodic line with many slurs and accents, and the lower staff has a rhythmic accompaniment with slurs.



Handwritten musical notation on a two-staff system. The upper staff has a melodic line with slurs, and the lower staff contains a complex chordal accompaniment with many slurs.



Handwritten musical notation on a two-staff system. The upper staff shows a melodic line with slurs and accents, and the lower staff has a complex chordal accompaniment with many slurs.

Handwritten musical notation on a grand staff. The first system consists of two staves with complex rhythmic patterns, including triplets and sixteenth notes. The second system also consists of two staves, with the lower staff containing rests and some melodic fragments.

Handwritten musical notation on a grand staff. The first system consists of two staves with rhythmic patterns, including eighth and sixteenth notes. The second system consists of two staves with a more melodic line in the upper staff and a bass line in the lower staff.

Handwritten musical notation on a grand staff. The first system consists of two staves with rhythmic patterns, including eighth and sixteenth notes. The second system consists of two staves with a melodic line in the upper staff and a bass line in the lower staff, ending with a large fermata.

Endau nächst dem Badersee, d. 28. August. 97.

Adante.

Handwritten musical notation on a grand staff. The first system consists of two staves with a melodic line in the upper staff and a bass line in the lower staff. The second system consists of two staves with a melodic line in the upper staff and a bass line in the lower staff.

Handwritten musical notation on a grand staff. The first system consists of two staves with a melodic line in the upper staff and a bass line in the lower staff. The second system consists of two staves with a melodic line in the upper staff and a bass line in the lower staff.