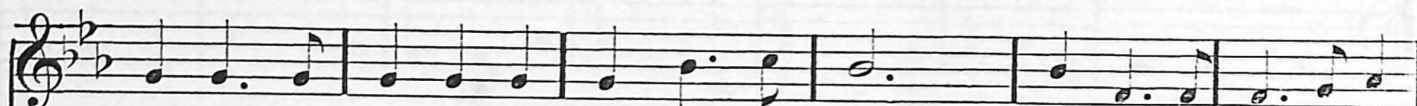


THE "WOLF AT THE DOOR."

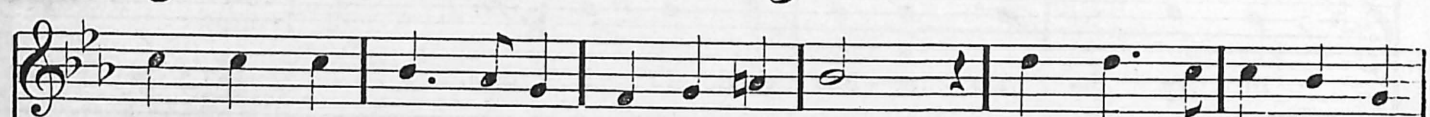
WILL S. HAYS.



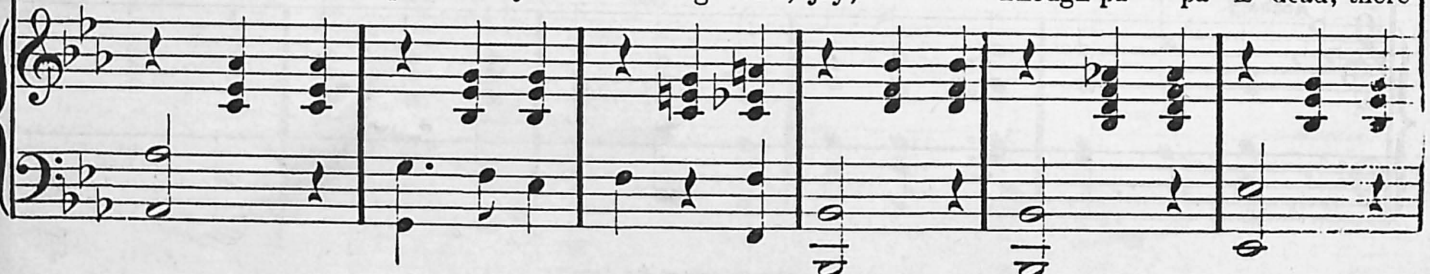
1. "Mam-ma, look out at the beau-ti-ful snow, Hark! how the mer-ci-less
 2. "Mam-ma, don't weep: see me kneel at your feet, I know you are cold, and
 3. "Mam-ma! God bless you! cheer up all you can, Some day I may be a



- 1 cold winds blow, See how the streets are all man-tled in white,.....
 2 we've nothing to eat, I'm wea-ry and foot-sore, I've gone out and tried,
 3 good honest man, But while I am noth-ing, As yet, but a boy,.....



- 1 What are you think-ing of, pa-pa, to-night? Why are you weeping so
 2 So hard to beg something, but I've been denied, Oh! why do you tremble, you've
 3 Please let me speak to your break-ing heart, joy, Though pa-pa is dead, there



si - lent and sad? I know pa - pa's gone, but can't I make you glad? Come kiss me
noth - ing to fear, The fires gone out, and 'tis ve - ry cold here, Put your head
is one left us still, Friends may for - sake us, but God nev - er will, Come let's go to

mam - ma, and don't weep no more," Hush! lis - ten my child, there's a wolf at the door.
on my lap, you can sleep on the floor," No! child, there's no sleep, there's a wolf at the door.
"Keep," and their trouble's were o'er, And the ver - dict was "dead," found a wolf at the door.

CHORUS.

Soprano.

Pi - ty the fath - er - less child, ere it dies, Pi - ty the

Alto.

Pi - ty the fath - er - less child, ere it dies, Pi - ty the

Tenor.

Pi - ty the fath - er - less child, ere it dies, Pi - ty the

Bass.

Pi - ty the fath - er - less child, ere it dies, Pi - ty the

Accomp.

wid - ow with tears in her eyes; Go help the home - less, the
wid - ow with tears in her eyes; Go help the home - less, the
wid - ow with tears in her eyes; Go help the home - less, the

This block contains the first system of a musical score. It features three vocal staves (soprano, alto, and tenor) and a piano accompaniment consisting of a grand staff (treble and bass clefs). The lyrics are repeated on each vocal staff. The music is in a key with two flats (B-flat and E-flat) and a common time signature. The piano part provides a harmonic foundation with chords and moving lines in both hands.

friend - less, and poor, Do all you can, — drive the wolf from the door.
friend - less, and poor, Do all you can, — drive the wolf from the door.
friend - less, and poor, Do all you can, — drive the wolf from the door.

This block contains the second system of the musical score. It continues with the same three vocal staves and piano accompaniment. The lyrics are repeated for each voice part. The piano accompaniment continues with similar harmonic support, featuring chords and melodic fragments. The system concludes with a double bar line.