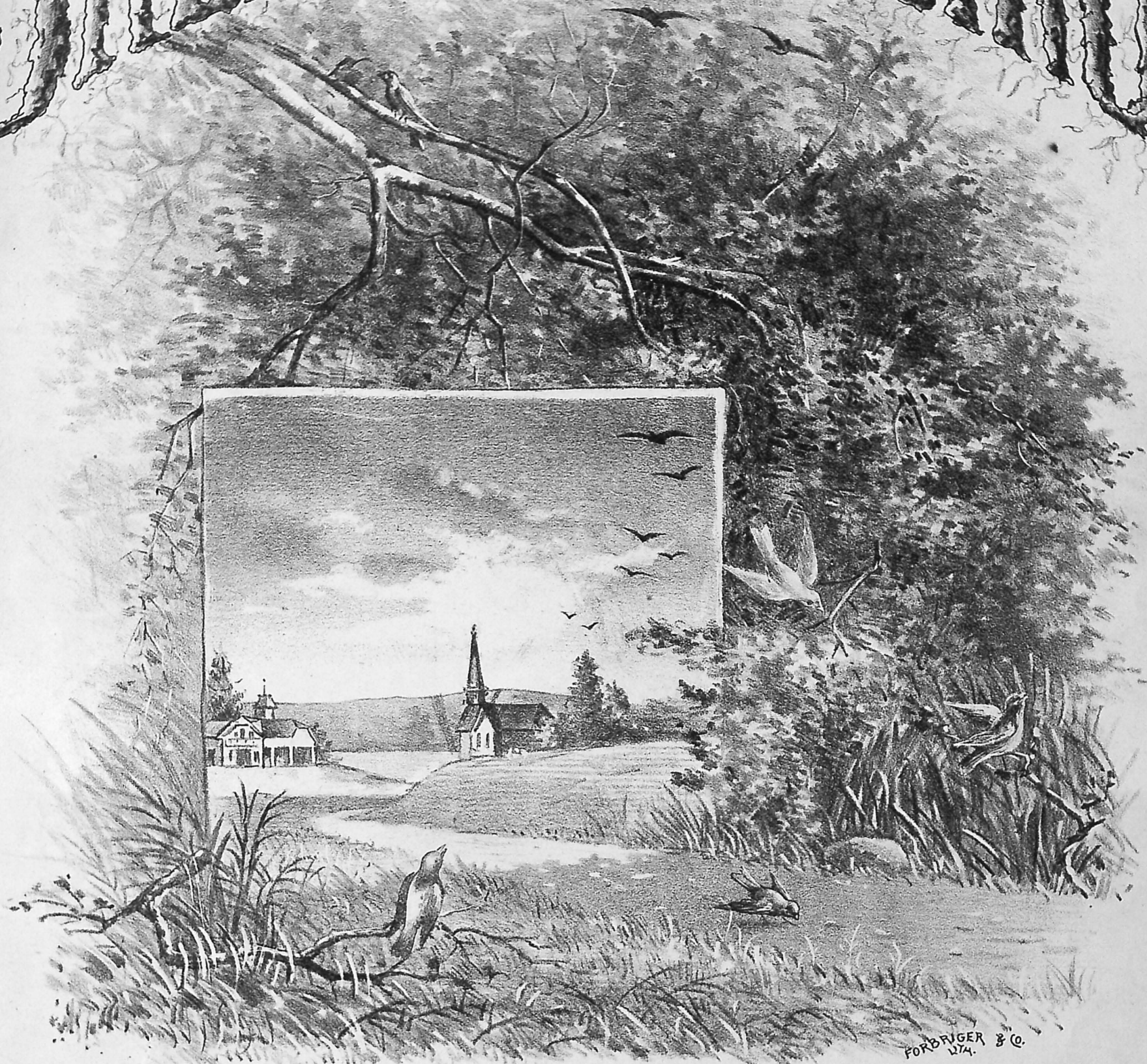


SPRING BIRDS SINGING



FORBRIER & CO.
174.

BEAUTIFUL SONG & CHORUS
COMPOSED BY

WILL S. HAYS. (4)



CINCINNATI
GEO. D. NEWHALL CO.
50 WEST 4TH ST.

Copyrighted 1884 by The Geo. D. Newhall Co.

SWEET BIRDS SINGING.

By WILL. S. HAYS.

Moderato.

The piano introduction consists of two systems of music. The first system is in 2/4 time, marked *Moderato*. The right hand features a melodic line with eighth notes and quarter notes, while the left hand provides a harmonic accompaniment with chords and single notes. Dynamics include *f* and *Ped.* (pedal). The second system continues the accompaniment with triplets in the right hand and chords in the left hand, marked *ff* and *Ped.*.

The first system of the vocal part includes the lyrics: "I hear the sweet birds sing - ing, In the twi - light in the grove, And the The cab - in is a log one, And the chim - ney's built of clay, It is I have gone, that road in child - hood, To the school with book and slate, And in". Below the vocal line is a flute part labeled "FLUTE" and a piano accompaniment. The piano accompaniment consists of chords in the right hand and single notes in the left hand.

The second system of the vocal part includes the lyrics: "clo - ver blos - soms trem - ble, 'Neath the dew - drops from a - bove; I can shel - ter'd in the shad - ows, Of the pine trees night and day; No com - ing home at eve - ning, Drove the cows up to the gate; Where I". Below the vocal line is a piano accompaniment consisting of chords in the right hand and single notes in the left hand.

cresc. *f*

hear the wa - ter rip - pling, Down the val - ley to the mill, As I
gild - ed hall or pal - ace, In my heart its place can fill, And I'm
found my moth - er wait - ing, As I whis - led tunes so shrill, When she'd

walk and watch my shad - ow, Down the old road 'round the hill.
hap - py when I'm walk - ing, Down the old road 'round the hill.
milk them, then I'd turn them, Down the old road 'round the hill.

Refrain. *rit.* *tempo.*

My old home in the cab - in, Is dear to mem' - ry still, I will

love it till I'm bur - ied, Near the old road 'round the hill.

CHORUS.

Duett

SOP.

ALTO.

TEN.

BASS. *I Solo.*

PIANO.

Repeat pp

Repeat pp