

TO MISS BELLE R. ANDREWS.  
Titersville Penn.

# OUR WINTER PLAY.



*W.S. Hayes*

SONG & CHORUS.

WRITTEN & COMPOSED BY

## WILL. S. HAYES.

Published by **J. L. PETERS.** New York.

T. A. BOYLE  
SAINT LOUIS.

DOBMEYER & CODY.  
CINCINNATI.

M. GRAY.  
SAN FRANCISCO.

JOHN FARRIS.  
HARTFORD.

T. GOGGAN & BRO'  
GALVESTON.

*Entered according to Act of Congress in the year 1872 by J. L. Peters in the Office of the Librarian of Congress at Washington.*

JOHN H. BUFFORD'S LITH 490 WASHN ST. BOSTON

# Peters' Selected Catalogue of New and Popular Music.

EVERY PIECE RECOMMENDED.

## Songs of the Third Grade.

A selected list of our best Songs and Ballads. In making this selection, we have been compelled to leave out many popular Songs on account of the limited size of this Catalogue. Those that are mentioned are good, and we have no hesitation in recommending them.

- Mary's waiting at the Window.* 3. E<sub>7</sub>. E<sub>7</sub> to F. Hays. 40
- Meet me again to-morrow, Bessie.* 3. B<sub>7</sub>. F. to F. Bar. and Chorus in Barcarolle style. Persley. 35
- Meet me beneath the Willow.* 3. C. G. to E. Serenade. Danks. 30
- Meet me Nannie, Blue-eyed Nannie.* 3. E<sub>7</sub>. E<sub>7</sub> to F. Mez. Sop. or Bar. and Chorus. Tucker. 30
- Memories of the Heart.* 3. D. E. to E. (or G.) Soprano. Crofts. 35
- \*Moon (The) is out to-night, Love.* 3. E<sub>7</sub>. E<sub>7</sub> to E<sub>7</sub>. Bar. or Base, with Chorus. Hays. 40
- Mother, sit me by the Window.* 3. F. E. to F. Mez. Soprano, with Chorus. Linwood. 30
- \*Mother's (The) Prayer.* 3. G. D. to D. Alto or Base. Small compass. (Plain copy, 40 cents.) Thomas. 50
- Mother, watch the little Feet.* 3. E. D<sub>7</sub> to E. Mez. Sop. or Bar. Webster. 35
- My Father's growing old.* 3. B<sub>7</sub>. F. to F. One octave. Mez. Soprano or Mez. Tenor and Chorus. Hays. 35
- My Mother's Wedding-Ring.* 3. E<sub>7</sub>. E<sub>7</sub> to F. Bar. and Chorus. Tucker. 35
- \*My Southern sunny Home.* 3. E<sub>7</sub>. D. to F. Mez. Sop. or Bar. and Cho. (Plain copy, 35 cents.) Hays. 50
- My poor Heart is sad with its Dreaming.* 3. E<sub>7</sub>. D. to F. Mez. Sop. or Baritone. Bishop. 35
- My Sister in Heaven.* 3. G. B. to E. Alto or Baritone. Gorham. 30
- \*My Trundle-Bed; or, Recollections of my Childhood.* 3. A. E. to E. Middle Voice. Baker. 40
- Near the Banks of that lone River.* 3. A. E. to E. Mez. Sop. or Bar. Take none but Peters' edition. 30
- \*Neath the old Elm-Tree.* 3. A. E. to E. Webster. 35
- Never look Sud.* 3. A. E. to F<sub>7</sub>. Mez. Sop. or Baritone. Shattuck. 30
- Night (The) my Father died.* 3. E<sub>7</sub>. B<sub>7</sub> to E<sub>7</sub>. Alto, Bar. or Base and Quartet. Hays. 35
- \*Nobody's Darling.* 3. B. E. to F. Mez. Sop. or Baritone and Chorus. Hays. 40
- No Home to shelter her poor little Head.* 3. D. D. to F<sub>7</sub>. Mez. Sop. or Mez. Ten. and Chorus. Stanley. 30
- No Name.* 3. E<sub>7</sub>. E<sub>7</sub> to E<sub>7</sub> and Chorus. Hays. 35
- \*Oh! no, not Sud.* 3. F. E. to E. Mez. Sop. or Baritone. Bishop. 30
- Oh! thou hast seen the Lily fair.* 3. D. D. to E. Mez. Sop. or Bar. Merz. 30
- Oh! why should we be parted?* 3. G. E. to F<sub>7</sub>. Mez. Sop. or Bar. Danks. 30
- Old (The) Musician and his Harp.* 3. A<sub>7</sub>. E<sub>7</sub> to F. Baritone Song and Chorus. Higgins. 30
- Old Uncle Ben, the Colored Refugee.* 3. A<sub>7</sub>. E<sub>7</sub> to F. Mez. Sop. or Baritone, with Chorus. Hays. 35
- Only a Baby small.* 3. F. D. to F. Mez. Soprano or Baritone, with Chorus. Donniker. 35
- \*Only a little Flower.* 3. A<sub>7</sub>. B<sub>7</sub> to F. Bar. Bishop. 40
- O Nora! come, say that you love me.* 3. G. D. to E. Baritone Song, with Chorus. Rhodes. 30
- Over the River, my Darling.* 3. B<sub>7</sub>. F. to F. Mez. Tenor. Persley. 35
- Paddy McGill.* 3. F. C. to D. Bar. or Base. Kimmell. 35
- Parting at the Gate.* 3. A. D<sub>7</sub> to E. Mez. Sop. or Baritone. Russell. 35
- Poor little Nell.* 3. E<sub>7</sub>. E<sub>7</sub> to E<sub>7</sub> and Cho. Rhodes. 30
- Rain on the Roof.* 3. E<sub>7</sub>. F. to E<sub>7</sub> and Cho. Clark. 35
- Robins have come again.* 3. B<sub>7</sub>. D. to F. Waltz. Song for Middle Voice. Wultz. 30
- Rose of the World.* 3. G. D. to E. Bar. Eaton. 30
- Rose of the Desert.* 3. A. E. to E. For Middle Voice. Words by Thomas Moore. Schoeller. 30
- Rowan Tree.* Scotch Song. 3. D. D. to D. Mez. Sop. or Baritone. Peters. 35

- Sally Ann.* 2. F. F. to C. For Middle Voice. Kellogg. 30
- Seeing Mallie Home.* 3. B<sub>7</sub>. F. to F. Mezzo Tenor. Millard. 30
- \*Send the little Ones happy to Bed.* 3. B<sub>7</sub>. F. to E<sub>7</sub>. Mez. Sop. Alto, or Bar., with Chorus. Persley. 40
- Separation.* 3. A. E. to E. Baritone. Maeder. 30
- \*Shamus O'Brien.* 3. F. C. to F. Mez. Sop. and Cho. Answer to Nora O'Neil. (Plain copy, 40 cents.) Picture Copy. Hays. 50
- She dwelleth now in Heaven.* 3. D. to E. Baritone. Thomas. 30
- She waits by the River for me.* 3. A. E. to F<sub>7</sub>. Cole. 35
- Silken Bands.* 3. G. D. to D. Middle Voice. Peters. 40
- Sing to me, Dearest.* 3. C. E. to G. Soprano or Tenor. Pratt. 30
- Sleeping, I dreamed a happy Dream.* 3. C. E. to E. Mez. Soprano. Clair. 30
- Sleep sweetly, Love, and well.* 3. F. C. to F. Waud. 30
- Smile to-day, and frown to-morrow.* 3. A. E. to E. Middle Voice. Danks. 35
- Soaring high and sinking low; or, The Gulf-Weed.* 3. A. C. to E<sub>7</sub>. Alto or Baritone. Baldwin. 30
- Somebody loves me dearly.* 3. A<sub>7</sub>. E<sub>7</sub> to F. Mez. Sop. and Chorus. Persley. 35
- Speak a kind Word, or say nothing at all.* 3. C. Low G. to C. Alto or Base. Donniker. 35
- Speak kindly to thy Wife.* 3. C. C. to F. Mez. Sop. Alto, or Baritone. Juch. 30

- Tapping at the Window.* 3. D. D. to G. Humorous Song for Mez. Soprano. Dressler. 40
- \*Then and there.* 3. E<sub>7</sub>. E<sub>7</sub> to E<sub>7</sub>. Mez. Sop. Alto, or Baritone, with Chorus. Hays. 40
- There are lonely Hearts to cherish.* 3. C. C. to E. Mez. Sop. or Baritone, with Chorus. Mortimer. 40
- There is Joy in the Heart when the Loved One is nigh.* 3. D. D. to G. Mez. Sep. or Ten. Slack. 35
- There's Magic in a Kiss.* 3. C. E. to G. Song and Dance. Written by Bobby Newcomb. Donniker. 30
- There's nothing like a Good and Tender Wife.* 3. B<sub>7</sub>. D. to F. Mez. Sop. or Bar. With Cho. Linwood. 30
- They have laid her to rest 'neath the Willow.* 3. E<sub>7</sub>. E<sub>7</sub> to E<sub>7</sub>. Mez. Sop. Alto, or Baritone and Chorus. Shattuck. 30
- Thine Image dwells within my Heart.* 3. G. D. to E. Middle Voice. Wendel. 40
- Those dark Eyes.* 3. F. B. to F. Bar. Bishop. 35
- Thou art ever in my Dreams, little Darling.* 3. B<sub>7</sub>. F. to E<sub>7</sub>. Baritone and Chorus. Fuller. 40
- Thy gentle Eyes.* 3. A. E. to F<sub>7</sub>. Mez. Soprano or Baritone and Chorus. Tucker. 30
- Thy Smile my Heart could always cheer; or, My Parent dear.* 3. B<sub>7</sub>. D. to F. Wallace. 30
- 'Tis but an Hour since first we met.* 3. E. D<sub>7</sub> to E. Mez. Soprano or Baritone. Cumming. 40
- 'Tis sad to part from one so dear.* 3. G. D. to E. Mez. Sop. Alto, or Bar. and Chorus. Templeton. 30
- 'Tis the first Rose of Summer.* 3. E<sub>7</sub>. C. to E<sub>7</sub>. Mez. Soprano or Baritone. Kimmell. 30
- Truly Yours!* 3. B<sub>7</sub>. F. to F. and Chorus. Hays. 40
- Two on Earth, and two in Heaven.* 3. G. D. to E. Mez. Sop. or Baritone. Webster. 35
- Underneath the Violets.* 3. A<sub>7</sub>. E<sub>7</sub> to E<sub>7</sub>, and Chorus. Pratt. 35
- Under the beautiful Blossoms.* 3. C. C. to E. Mez. Sop. or Bar. Tucker. 30
- Voice of my Heart.* 3. D<sub>7</sub>. E<sub>7</sub> to G<sub>7</sub>. Mez. Sop. or Mez. Tenor. Mortimer. 35
- Wait for me, Love!* 3. F. C. to F. Mez. Sop. or Baritone. Bishop. 35
- Waiting at the Stile.* 3. B<sub>7</sub>. F. to F. Mez. Sop. and Chorus. Cox. 3
- \*Waiting in the Twilight.* 3. G. C<sub>7</sub> to A. (or G. ad lib.) Mezzo Soprano. Thomas. 40
- Wanderer's (The) Lament.* 3. C. E. to F. Baritone Song. With Chorus. Ross. 35
- We laid her down to rest.* 3. G. D. to E. Rauch. 50
- We'll not forget you, Mother.* 3. G. G. to F<sub>7</sub>. Middle Voice, with Chorus. Belgroce. 40
- We shall miss thee, Nannie, Darling.* 3. A. D. to F<sub>7</sub>. Mez. Sop. or Baritone, with Chorus. Pratt. 30
- We stood b-side the Window.* 3. D. C<sub>7</sub> to E. Alto or Baritone. Peters. 35
- What will I do when my Mother is dead?* 3. F. C. to F. Mez. Sop. or Bar., with Chorus. Hays. 35
- When I went Home with Belle.* 3. B. D. to G. Mez. Tenor, with Chorus. Hays. 35
- \*When the Dewdrops on the Rose.* 3. C. E. to G. Soprano or Tenor. Operti. 40
- When the Leaves are turning Brown.* 3. E. to E. Ross. 40
- Whisperings of Love.* 3. E<sub>7</sub>. D. to G. Mez. Sop. or Tenor. Kinkel. 30
- Why do the Roses wither?* 3. D. A. to D. (or F<sub>7</sub>) Alto, Bar. or Base, with Chorus. Howard. 30
- Why should Lovers ever part?* 3. B<sub>7</sub>. D. to F. Mez. Sop. or Baritone. Birdseye. 30
- \*Widow McGee.* 3. B<sub>7</sub>. F. to E<sub>7</sub>. Bar. and Cho. Hays. 40
- Wife, Children, and Friends.* 3. A. Minor. D. to E. For Baritone. With Chorus. Peters. 30
- Woman's Eye.* 3. G. D. to G. Scotch Song. Merz. 35
- \*You could not help but love her.* 3. G. E. to F<sub>7</sub>. Mez. Sop. Tenor, or Baritone. Dressler. 30
- You bid me tell you why, Jennie.* Answer to "Won't you tell me why, Robin?" 3. E<sub>7</sub>. E<sub>7</sub> to E<sub>7</sub>. Muse. 30
- Yes, we think of thee at Home.* 3. G. D. to E. Answer to "Do they Think of Me?" Bailey. 30
- Yes, we'll write you a Letter from Home.* 3. A<sub>7</sub>. E<sub>7</sub> to E<sub>7</sub>. Mez. Sop. or Bar. and Chorus. Tucker. 35
- You'll think of me, Friends, when I'm gone.* 3. G. D. to E. Mez. Sop. Alto, or Bar. with Chorus. Fuller. 30

DON'T DELAY! NOW IS THE TIME

TO SUBSCRIBE FOR

Peters' Musical Monthly.

Send 30 cents for our latest Number, and see how much good music can be bought for such a small sum. Don't wonder if the Magazine is still published, but order a copy and you will get it by next mail. Remember! every number contains four or five Songs and three or four Instrumental Pieces, besides Duets, Quartets, and Four-Hand Pieces.

Price, 30 cents Each; \$3 per Year.

Six Back Numbers sent, Postpaid, for \$1.

- Sunshine on the Sea.* 3. C. C. to F. Mez. Soprano. Tucker. 30
- Sweet Carrie Bell.* 3. D. D. to E. Mez. Sop. Squire. 35
- Sweet Dreams of thee.* 3. C. E. to F. Mortimer. 30
- Sweet Face at the Window.* 3. G. D. to D. Alto, Bar. or Base, with Chorus. Danks. 35
- Sweet (The) Face I saw in my Dreams.* 3. F. C. to F. Baritone. Juch. 30
- Sweet little Nell.* 3. F. C. to D. and Chorus. Mez. Sop. or Bar. Kimmell. 30
- Sweet Melanee.* 3. A. D<sub>7</sub> to E. with Chorus. Danks. 35
- Sweet Mother, pray for me.* 3. A. E. to F<sub>7</sub>. Mez. Sop. or Mez. Tenor. Millard. 30
- Sweet Robin.* 3. F. C. to E. Mezzo Soprano or Baritone. Kimmell. 35
- Sweet were my Dreams of thee.* 3. E<sub>7</sub>. E<sub>7</sub> to F. Baritone. Webster. 40

## Temperance Songs.

- Don't sell my Father Rum.* 3. F. C. to E. Mez. Sop. or Alto. Dressler. 30
- Drinking Gin.* 3. F. C. to C. Bar. or Base. and Chorus. Heath. 30
- If you've a Father's Love for your Child.* 3. A<sub>7</sub>. E<sub>7</sub> to D<sub>7</sub>. For Middle Voice, with Chorus. Martin. 30
- Living Waters.* 3. A<sub>7</sub>. E<sub>7</sub> to E<sub>7</sub>. With Chorus. Middle Voice. Clark. 35
- \*Papa, stay Home. I'm Motherless now.* 3. Song and Chorus for Middle Voice. Hays. 40
- Stay at Home with me to-night, Tom.* 2. F. F. to F. Mez. Sop. and Chorus. Tucker. 30
- We can not give thee up.* 3. F. C. to D. Bar. and Chorus. Clark. 35
- We won't leave the Farm.* 3. F. F. to F. Bar. and Chorus. Persley. 35

Pieces Marked \* have Picture Titles. 1, Easy, to 7, Very Difficult. Black Letters, the Key. The other Letters, the Compass

Address all Orders to J. L. PETERS, Music Publisher, 599 Broadway, New-York.

To Belle R. Andrews, Titusville, Pa.

# OUR LITTLE PET.

SONG and CHORUS.

By WILL S. HAYS.

*Moderato.*

Piano introduction in 4/4 time, key of B-flat major. The music consists of a series of chords and melodic lines in both the treble and bass staves.

1. I've a lit - tle household an - gel, Scarce - ly old e - nough to walk, Oh, 'twould

Musical notation for the first line of the song, including vocal line and piano accompaniment.

fill your heart with pleas - ure If you'd hear her try to talk; She has

Musical notation for the second line of the song, including vocal line and piano accompaniment.

eyes just like her moth - er's, They are bright and black as jet, And she

Musical notation for the third line of the song, including vocal line and piano accompaniment.

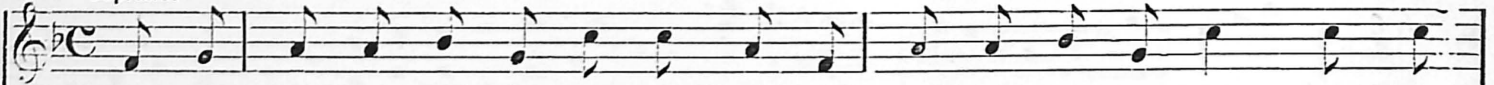
smiles so arch and cun - ning, When we call her "lit - tle Pet."

CHORUS.

Musical notation for the chorus of the song, including vocal line and piano accompaniment.

## CHORUS.

Soprano.

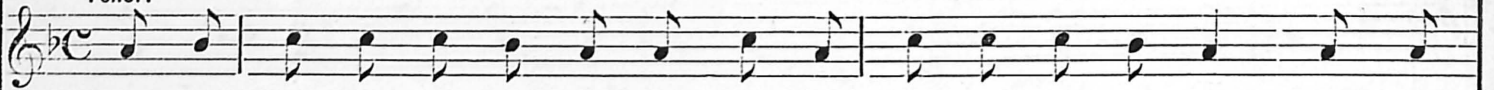


She's the sweet - est lit - tle dar - ling That your eyes have ev - er met, She's the

Alto.



Tenor.

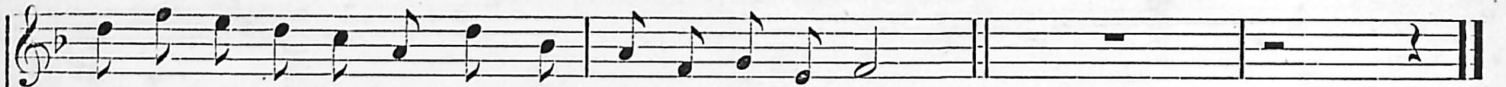
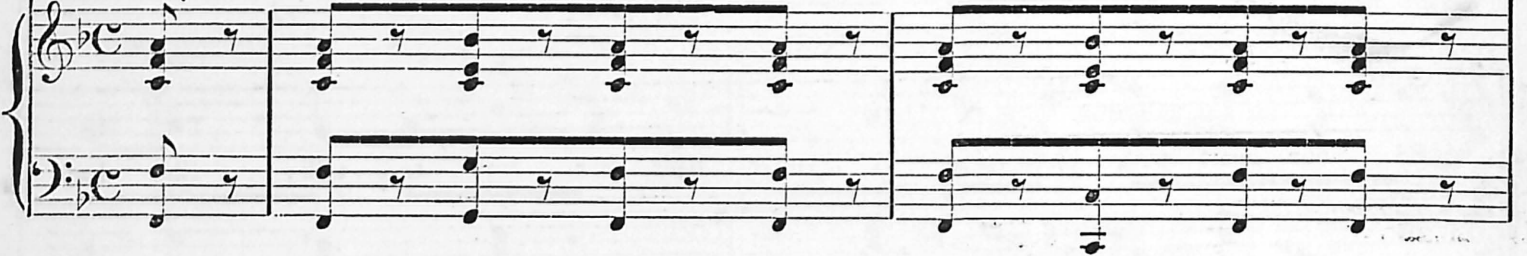


She's the sweet - est lit - tle dar - ling That your eyes have ev - er met, She's the

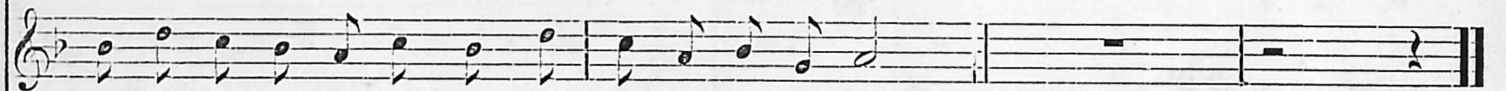
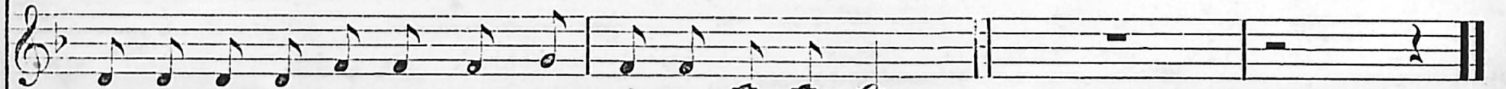
Bass.



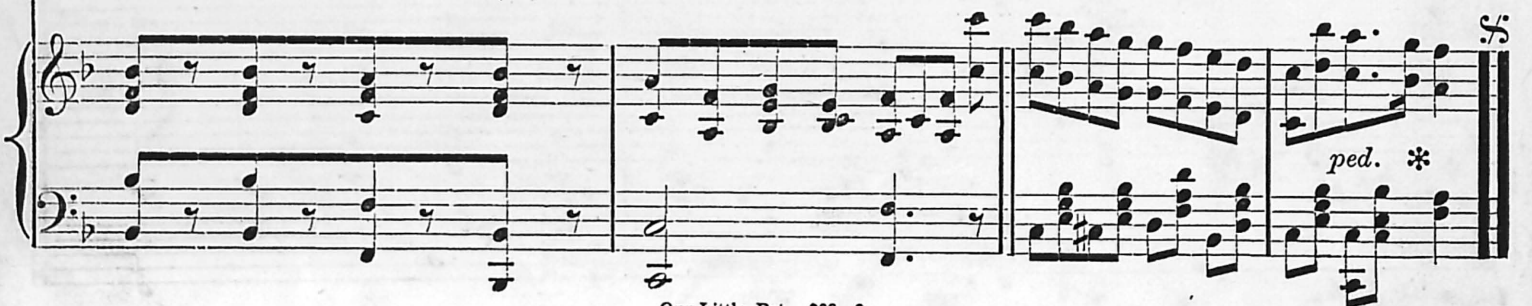
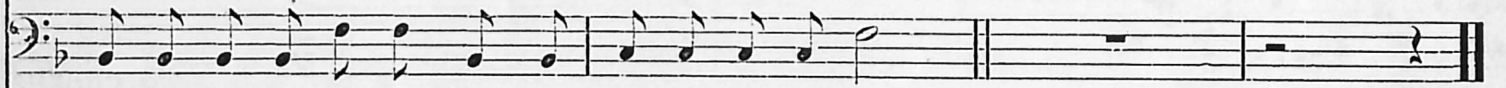
Accomp.



i - dol of her Mother, And her Father's lit - tle pet.



i - dol of her Mother, And her Father's lit - tle pet.



2. I have sat for hours watch- ing, When she'd play up - on the floor, And I've  
 3. She's the sun - light of our be - ing, She's the joy of all our days! And she

2 asked my - self the ques - tion, "Could a mor - tal wish for more?" Oh! I've  
 3 charms our hearts with glad - ness By her sweet and win - ning ways! When I

2 nev - er known a sor - row, Am a stran - ger to re - gret, For my  
 3 see her play - ing near me, When I hear her gen - tle mirth,— Oh, I

CHORUS.

2 wife and I are hap - py With our dar - ling lit - tle pet.  
 3 think she is an an - gel, Who has wan - der'd down to earth.