

GOOD BYE, OLD HOME.

By WILL S. HAYS.

Andantino.

Piano accompaniment for the first system, featuring a treble and bass clef with a 3/4 time signature. The music includes a 'Ped.' (pedal) marking and asterisks indicating specific notes.

Piano accompaniment for the second system, continuing the melody and accompaniment with 'Ped.' markings and asterisks.

Vocal line for the first system, marked with a 'S' (Soprano) and a 'C' (Clef) symbol.

1. Good bye, old home; Sad is my heart, To
 2. Good bye, old home; Out on life's sea, Mine
 3. Good bye, old home; Tears fill mine eyes,

Piano accompaniment for the third system, continuing the instrumental part.

Vocal line for the second system, continuing the melody.

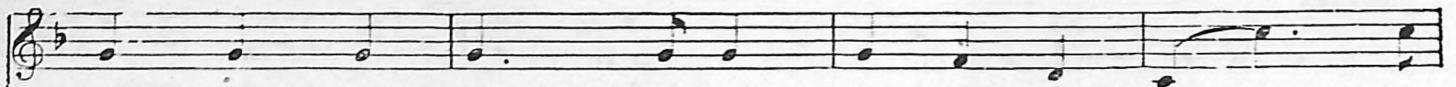
think that for - ev - er, to night we must part,
 eyes will grow dim..... with tears shed for thee,
 Soon will be sev - ered af - fec - tion - ate ties.

Piano accompaniment for the fourth system, concluding the piece.

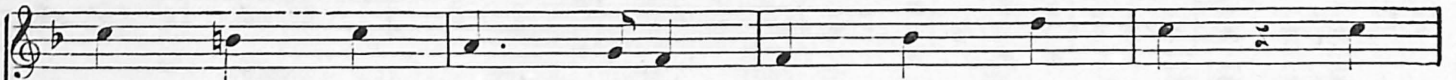
Weep - - ing I leave thee, my heart is in pain, I
 think of the joys of child - hood now o'er. And
 Bound by the love of the friends I loved true, Who

feel that I nev - er shall see thee a - gain.
 weep when I think they will come nev - er more. I'll
 sleep in their graves, who in child - hood I knew. I've

Scenes of my boy - hood for ev - er a - dieu,
 miss the sweet sound of the mur - mur - ing breeze As it
 no one to love me, I've no one to cheer, For



Oft will my mem - - o - ry wan - der to you.....
 plays with the leaf of the tow - er - ing trees..... For
 all that I love in this world I leave here.....



And to the loved ones where - ev - er I roam, But
 I will be wan - der - ing o - ver life's foam,
 Hop - ing when - ev - er life's jour - ney is o'er I'll



O! I must leave thee, Good bye! Old Home.
 Far, from the scenes of my once hap - py home.
 find me a home on the ech - o - less shore.



CHORUS

SOPRANO

Home of my heart, home, sweet home, O! how I love thee where - ev - er I roam,

ALTO.

Home of my heart, home, sweet home, O! how I love thee where - ev - er I roam,

TENOR

Home of my heart, home, sweet home, O! how I love thee where - ev - er I roam,

BASS

Home of my heart, home, sweet home, O! how I love thee where - ev - er I roam,

But we must part for the hour is nigh, When weeping I'll mur - mur Old Home, Good-bye.

But we must part for the hour is nigh, When weeping I'll mur - mur Old Home, Good-bye.

But we must part for the hour is nigh, When weeping I'll mur - mur Old Home, Good-bye.

But we must part for the hour is nigh, When weeping I'll mur - mur Old Home, Good-bye.

Ped. * Ped. * Ped. * Ped. D.S.