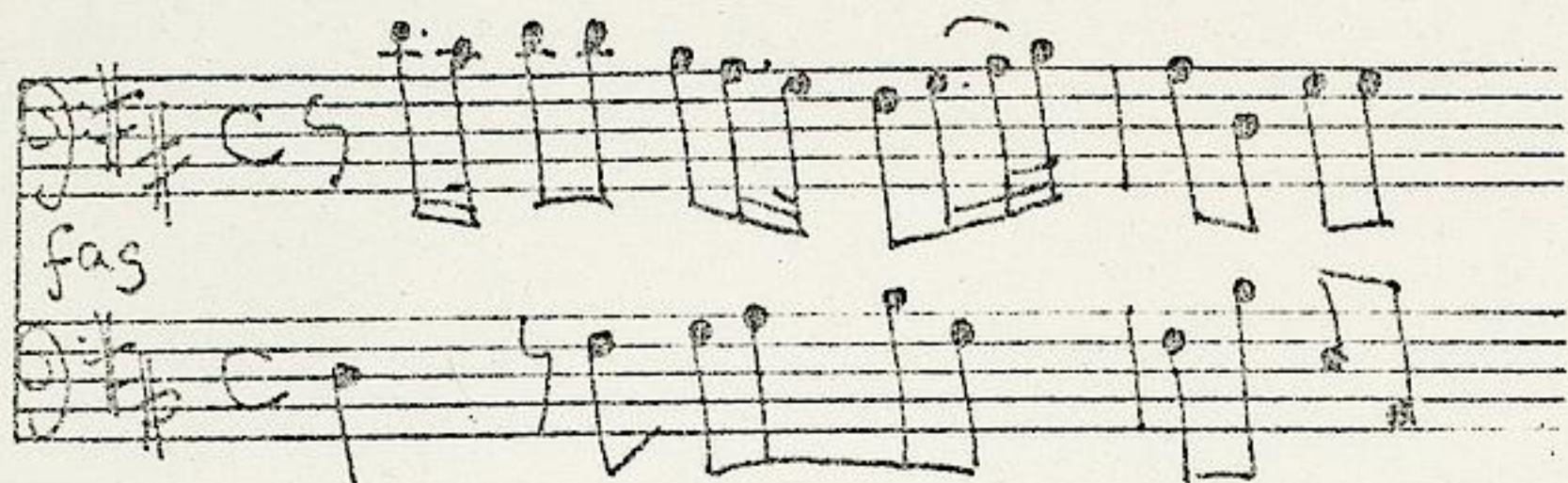


Fasch, Johann Friedrich (1688-1758)

BRD DS Mus.ms 297/2

Sonata. Del Sign: Fasch. / [Stimmbez.:] Flute Travers: / Violino. /  
Bassone / Cembalo. / (D-dur) [Kopftitel]



Largo C D-dur - Allegro  
2/4 D-dur - Largo 3/4  
h-moll - Allegro 3/8  
D-dur.

Ms. ca. 1740.

34 x 20,5 cm.

partitur: 2 Bl.

Alte Sign.: Stempel: L mit Krone. 3867.

Schreiber: J.S. Endler oder Grünwald.

Die Stimmen vgl. Mus.ms 298/2. Die autographe Partitur vgl.  
Mus. 297/4.



# Sonata.

Del Sign: Fasch.

*Fute Traverso.* *Largo.*

*Violino.*

*Bassone.*

*Cembalo.*

*Largo*

*Largo*

*Largo*

*Allegro.*

This image shows a page of handwritten musical notation on aged, yellowed paper. The score is organized into several systems, each consisting of multiple staves. The notation includes various musical symbols such as notes, rests, and clefs. On the right side of the page, there are three distinct dynamic markings: *Largo*, *Allegro*, and another *Allegro*. The handwriting is in a historical style, and the paper shows signs of age, including some staining and discoloration.



Handwritten musical notation on three staves, featuring complex rhythmic patterns and various note values.

*Adagio*

Handwritten musical notation for the "Adagio" section, starting with a treble clef and a 3/4 time signature.

Handwritten musical notation on three staves, continuing the piece with various rhythmic motifs.

Handwritten musical notation on three staves, showing a section with more complex rhythmic structures.

Großherzoglich  
Hessische  
Hofbibliothek

*Allegro*

Handwritten musical notation for the "Allegro" section, starting with a treble clef and a 3/4 time signature.

Handwritten musical notation on three staves, concluding the piece with various rhythmic patterns.

This image shows a page of handwritten musical notation on aged, yellowed paper. The notation is organized into five systems, each consisting of three staves. The top staff of each system is written in a treble clef, while the two lower staves are in bass clefs. The handwriting is in a historical style, likely from the 18th or 19th century. The music features various note values, including minims, crotchets, and quavers, along with rests and dynamic markings. A large, decorative flourish is present at the end of the first system. The paper shows signs of age, with some staining and wear.

Großherzoglich  
Hessische  
Hofbibliothek