

Schranex No: II.  
9. Fach 15. Lage.

ccviii Oboi, Viola,  
e Basso. 4. St.  
del Sig. Fasch.



Musica	
2423	
a	5



~~Cx 285~~

URFILM 14/1977 № 175

## Sächsische Landesbibliothek in Dresden

Handschrift Nr. Mss. 2423  
Q15

Die Benutzung dieser Handschrift ist nur unter der Bedingung gestattet, daß der Entleiher der hiesigen Bibliothek ein Stück seiner auf die Handschrift bezüglichen Veröffentlichung geschenkweise überläßt, sofern die Bibliotheksverwaltung nicht ausdrücklich auf die Überlassung verzichtet. Zum Durchzeichnen oder zur Herstellung von Lichtbildern ist besondere Erlaubnis einzuholen.

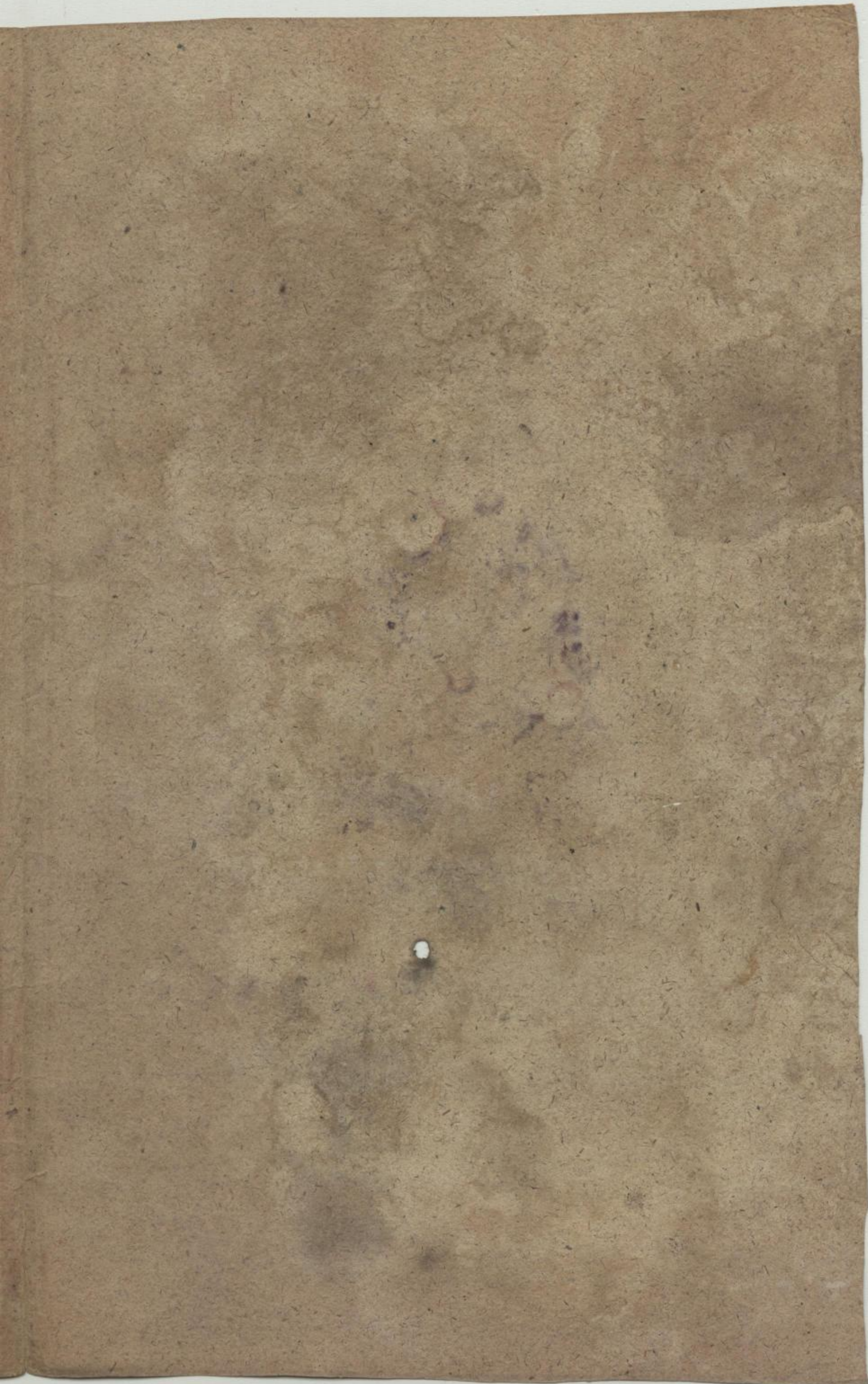
Belehrende Auskünfte oder Hinweise auf Veröffentlichungen über diese Handschrift, die der Bibliothek noch unbekannt sind, werden dankbar entgegengenommen.

Dieser Band wurde 1997 durch Bestrahlung sterilisiert. Verfärbungen stellen keine Gefahr dar.

### Benutzer der Handschrift seit 1950

Datum	Name, Stand und Wohnung des Benutzers	Ort der Benutzung	Art der Benutzung (nur eingesehen?, ganz od. teilw. abgeschrieben?, ganz od. teilw. verglichen?)	Zweck der Benutzung (Ist Veröffentlichung beabsichtigt und in welcher Form?)
-------	---------------------------------------	-------------------	--	--







Sonata

Oboe Primo.

*Largo*  $\text{C}$

*piano* *forte*

*piano* *forte*

*pia.* *forte*

*Allegro*  $\frac{2}{4}$

*pia.* *forte*

*pia.* *forte* *piano.*

*forte*

Mus. 2423-Q-5

Sächs.  
Landes-  
Bibl.

2

4

Handwritten musical score on aged paper, featuring 14 staves of music. The notation includes various note values, rests, and dynamic markings such as *forte*, *piano*, and *pia:*. The music is written in a single system across the staves.

3  
2

*Largo* 4.

*Allegro* 8.

A page of handwritten musical notation on aged, yellowed paper. The score consists of ten staves of music. The notation is dense, featuring many sixteenth and thirty-second notes, often beamed together in groups. There are several accidentals (flats) throughout the piece. The handwriting is in dark ink. The first staff begins with a treble clef and a key signature of one flat. The music continues across the staves with various rhythmic patterns and phrasing. The final staff of music ends with a double bar line and a diagonal scribble.

*piano*

*forte*

*Handwritten scribbles and markings at the bottom left of the page.*

*Handwritten numbers 5 and 4, possibly indicating measures or page numbers.*



# Sonata Oboe-Secondo.

*Largo*

2 piano forte

*Allegro*

7. piano forte piano forte piano

Mus. 2423-Q-5

Sächs. Landesbibl.

6

5

7.

*plac.* *forte*

*plac.* *forte*

*plac.* *forte*

*V. S. V. S.*

7 6

*Largo*  $\frac{3}{4}$

Handwritten musical score for a piece marked *Largo* in 3/4 time. The score consists of seven staves of music. The first staff begins with a treble clef, a key signature of one flat (B-flat), and a 3/4 time signature. The music is written in a cursive hand and features a variety of note values, including quarter, eighth, and sixteenth notes, as well as rests and accidentals. The piece concludes with a double bar line on the seventh staff.

*Allegro*  $\frac{3}{4}$

Handwritten musical score for a piece marked *Allegro* in 3/4 time. The score consists of six staves of music. The first staff begins with a treble clef, a key signature of one flat (B-flat), and a 3/4 time signature. The music is written in a cursive hand and features a variety of note values, including quarter, eighth, and sixteenth notes, as well as rests and accidentals. The piece concludes with a double bar line on the sixth staff. The word *pia.* is written below the fourth staff, and the word *forte* is written below the fifth staff.



Handwritten musical score on aged paper, consisting of 12 staves of music. The notation includes various note values, rests, and dynamic markings. The paper shows signs of age, including foxing and staining.

*piano*      *forte*

*Ex 245*

*\$*

9

8

# Sonata Bassone

*Largo*

*pia.* *forte*

*pia.* *for:*

*pia.* *forte*

*Allegro*

*pia.*

*for:*

*piano* *forte* *pia.*

Handwritten musical score on aged paper, featuring ten staves of music. The notation includes various note values, rests, and dynamic markings such as "forte", "piano", and "3.". The music is written in a single system across the staves.

*Volpi*

19

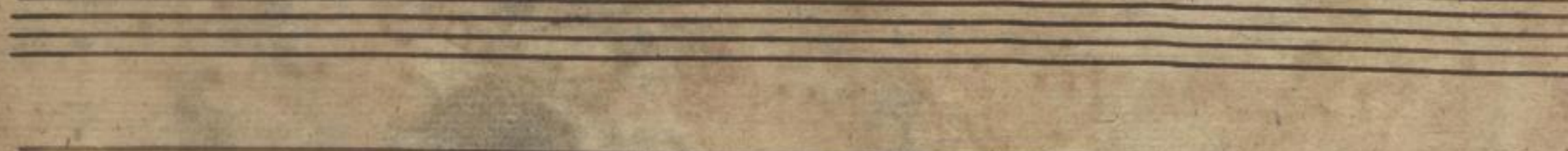
70

Largo

Handwritten musical score for the Largo section, consisting of ten staves of music. The notation includes treble clefs, a key signature of one sharp (F#), and a 3/4 time signature. The music features a variety of note values, including quarter, eighth, and sixteenth notes, as well as rests and dynamic markings.

Allegro

Handwritten musical score for the Allegro section, consisting of five staves of music. The notation includes treble clefs, a key signature of one sharp (F#), and a 3/4 time signature. The music is characterized by a faster tempo and includes dynamic markings such as *piano* and *forte*.



*Handwritten scribble or signature*

3

13

12



Sonata Cembalo.

*Largo*  $\text{C} \text{ } \flat \text{ } \flat$

The image shows a handwritten musical score for a Cembalo Sonata. It consists of two movements. The first movement, 'Largo', is in a common time signature (C) and a key signature of two flats (B-flat major or D-flat minor). It is written on five staves, with the first two staves being the treble and bass clefs, and the remaining three staves being the right and left hands. The second movement, 'Allegro', is in a 2/4 time signature and the same key signature. It is also written on five staves, with the first two staves being the treble and bass clefs, and the remaining three staves being the right and left hands. The score includes various musical notations such as notes, rests, and dynamic markings like 'piano' and 'forte'. There are also some handwritten annotations and numbers in the margins.

*Allegro*  $\text{C} \text{ } \flat \text{ } \flat$   $\frac{2}{4}$

*piano* *forte*

*pia:* *for:*

Sächs.  
Landes-  
Bibl.

114

73

Mus. 2423-0-5

*Largo*

15  
74

Allegro  $\text{3/4}$

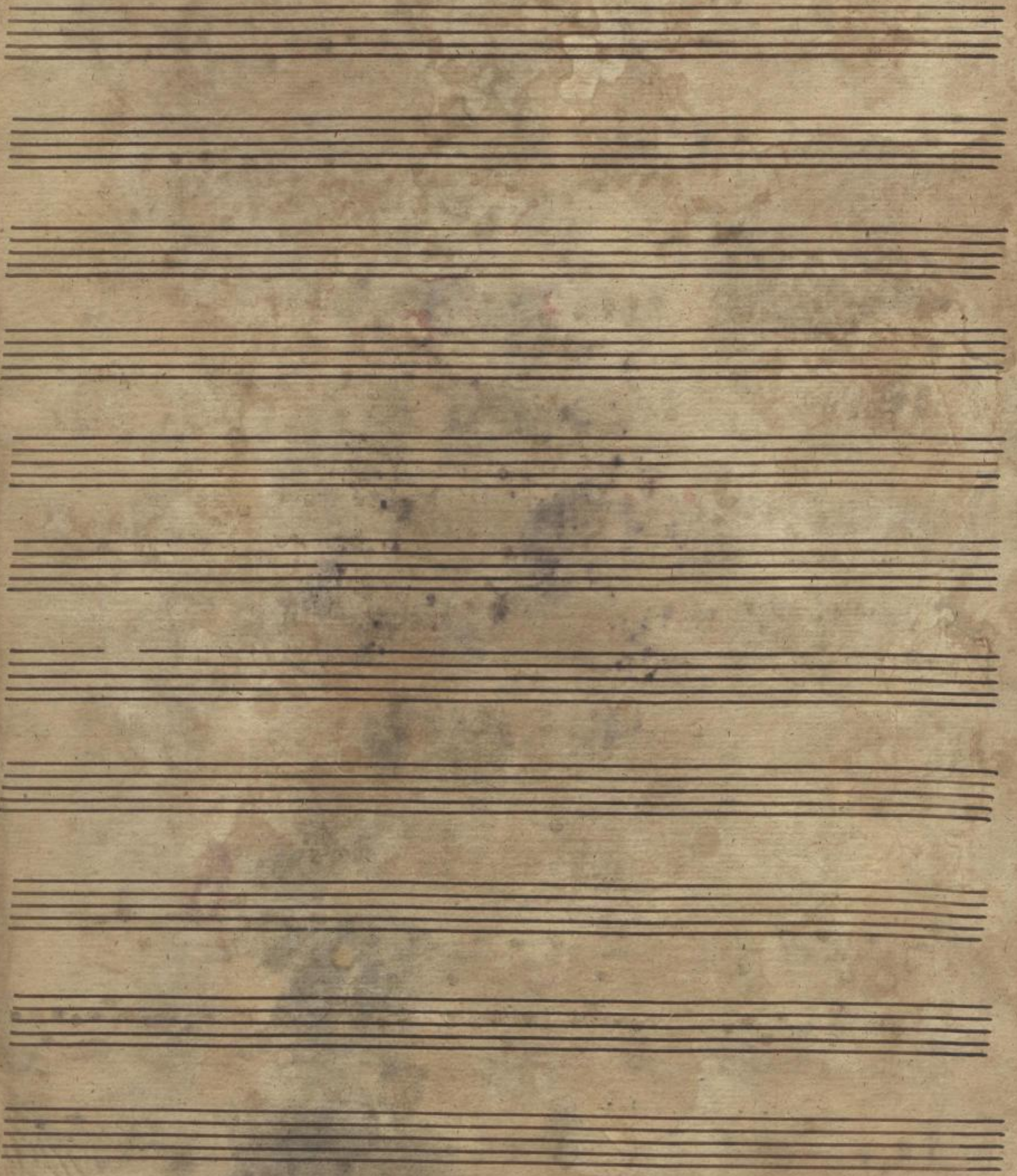
*piano*

*forte*

2.

*piano*

*forte*



Co. 285

*[Signature]* 17

16