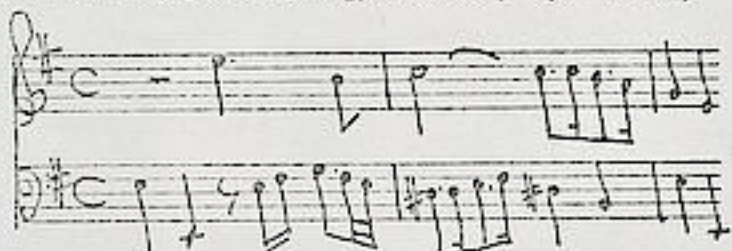


Fasch, Johann Friedrich (1688-1758)

BRD DS Mus.ms.1184/11

Ouverture/<sup>e</sup>/2 Flaut.Trav /2 Hautb:/2 Violin/Viola/Fagott/e/  
Cembalo./[Incipit]/Fasch / (e-moll)



[ohne Satzbez.] C/3/4 -  
Air 3/4 - Bourée C - Air  
C - Gavotte C - Menuet  
1,2 3/4.

Ms ca.1742/43 (Graupner). 35 x 22 cm. WZ: DS 18.

9 St.: vl 1,2, vla, cembalo (unbez.), fl 1,2, ob 1,2, fag.  
je 2 Bl.

3337

1184<sup>11</sup>

# Overture

a

2 Flaut. Fav.

2 Flaut. b.

2 Violini -

Viola

Fagotto

fol. 1-18.

M.

e

Cembalo.



Fasch

1184/11

Overture.

Flaut: Grav: 1mo.

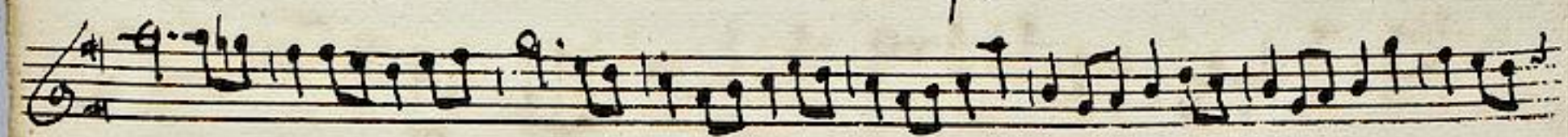


Handwritten musical score on 15 staves. The notation includes treble clefs, a key signature of one sharp (F#), and a 3/4 time signature. The music features a variety of rhythmic patterns, including eighth and sixteenth notes, and rests. Some notes are marked with a 't' above them. The score concludes with a double bar line and the word 'Fine' written in a decorative script.

*Power*

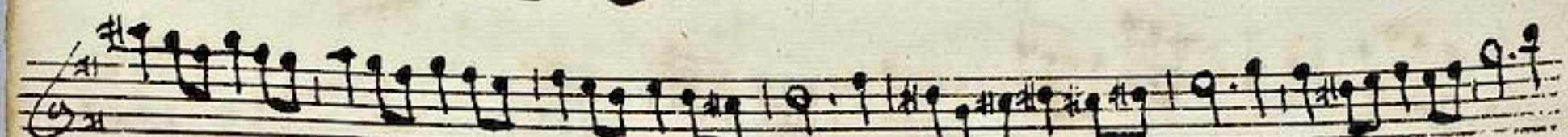



*Douree* 

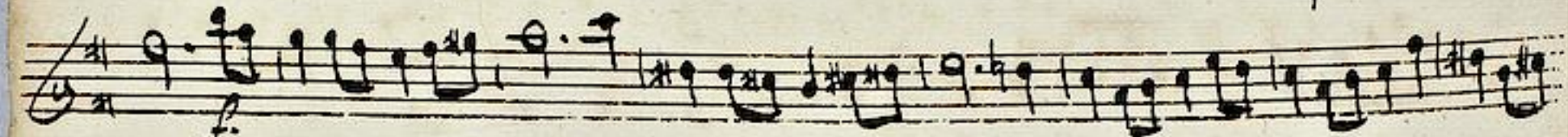




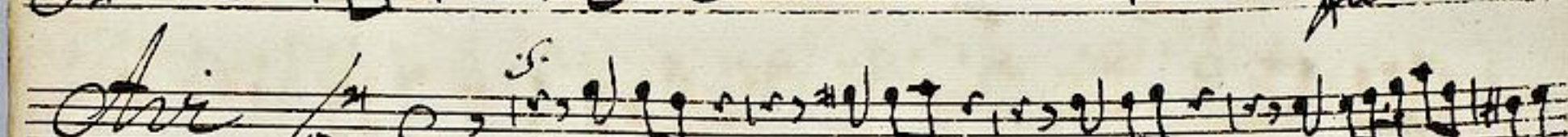


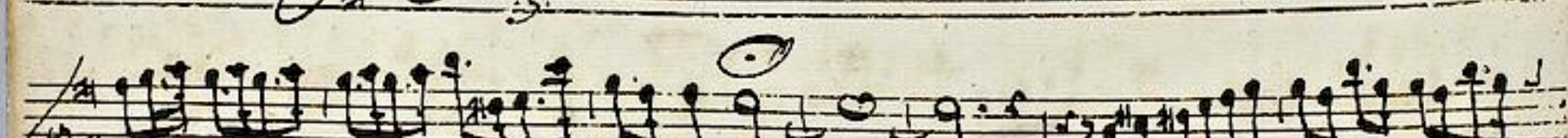






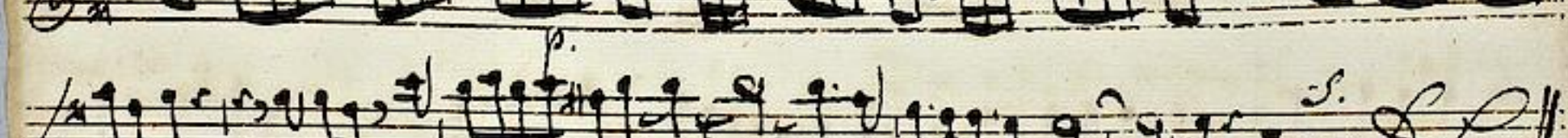


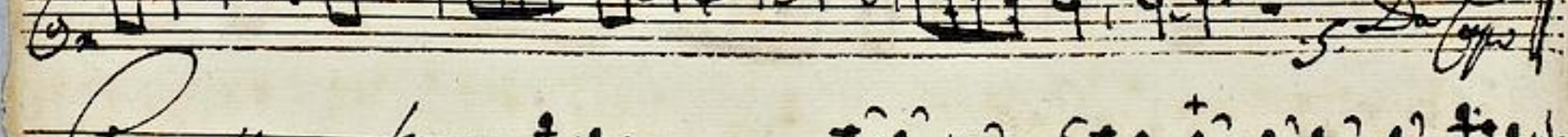
*Ari* 









*Gavotte* 



Handwritten musical score on the first system, consisting of two staves. The notation includes treble clefs, a key signature of one sharp (F#), and a 2/4 time signature. The music features a series of eighth and sixteenth notes with various accidentals. A dynamic marking 'p.' is present in the first staff.

*Menuet* *Alternat.*

Handwritten musical score for the first minuet, consisting of two staves. The notation includes treble clefs, a key signature of one sharp (F#), and a 3/4 time signature. The music features a series of eighth and sixteenth notes with various accidentals. A dynamic marking 'p.' is present in the first staff.

*Menuet*

Handwritten musical score for the second minuet, consisting of two staves. The notation includes treble clefs, a key signature of one sharp (F#), and a 3/4 time signature. The music features a series of eighth and sixteenth notes with various accidentals. A dynamic marking 'p.' is present in the first staff. The piece concludes with a double bar line and a decorative flourish.



Ouverture.

Flaut. Fav. 2do.

A handwritten musical score for flute, consisting of 15 staves of music. The notation is in a single system, with each staff containing a line of music. The key signature is one sharp (F#), and the time signature is common time (C). The music features a variety of rhythmic patterns, including eighth and sixteenth notes, and rests. There are several trills marked with a 't' above the notes. The paper is aged and shows some staining.

Handwritten musical score on ten staves. The notation includes treble clefs, a key signature of one sharp (F#), and a 3/4 time signature. The music features various note values, rests, and dynamic markings such as 't' and 'p.'. The piece concludes with the handwritten text "Da Capo" followed by a double bar line.

*Power*





*Bourée*

*p.* *f.* *p.* *f.* *p.* *f.*

*Aria*

*Larg.*

*p.* *f.* *p.* *f.*

*Finis*

*Da Capo*

*Furto*

*pp.* *f.*

Handwritten musical notation on five staves. The notation includes various note values, rests, and dynamic markings such as *p.* and *f.* The music is written in a single system across the five staves.

*Menuet* *allaternat.*

Handwritten musical notation on four staves, continuing the piece. The notation includes various rhythmic patterns and dynamics.

*Menuet* 2.

Handwritten musical notation on three staves, concluding the piece. The notation includes a double bar line and a scribbled-out section at the end of the final staff.

Ouverture.

Hautbois I<sup>mo</sup>.

A handwritten musical score for the Overture, Hautbois I part. The score consists of 15 staves of music, each with a treble clef and a key signature of one sharp (F#). The notation includes various rhythmic values, accidentals, and dynamic markings such as *mf*, *p*, and *pp*. The music is written in a cursive, historical style. The paper shows signs of age, including some staining and foxing.

A handwritten musical score on aged paper, consisting of 14 staves. The notation is in a single system with a treble clef and a key signature of one sharp (F#). The piece is titled "Arie" and "Da Capo". The score includes various musical notations such as notes, rests, accidentals, and dynamic markings like "p." (piano) and "f." (forte). There are also some markings that look like "t" or "tr" above notes, possibly indicating trills or tremolos. The piece concludes with a double bar line and the words "Da Capo" written in a decorative script.

*Bourée*

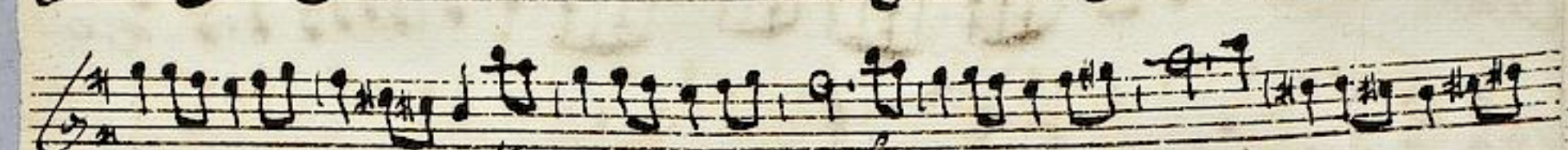
*Bourée* 

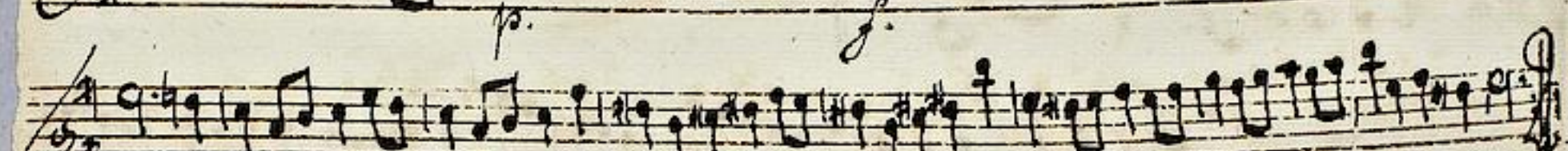


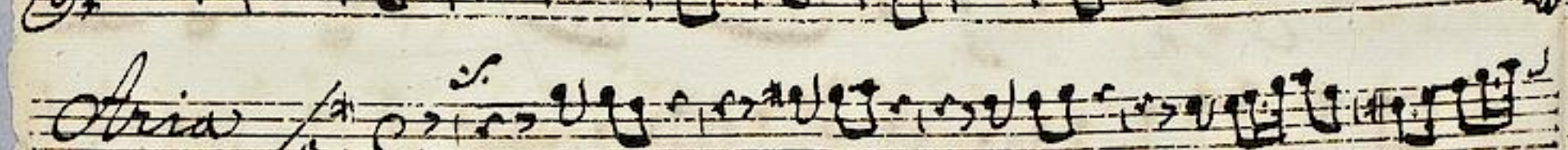








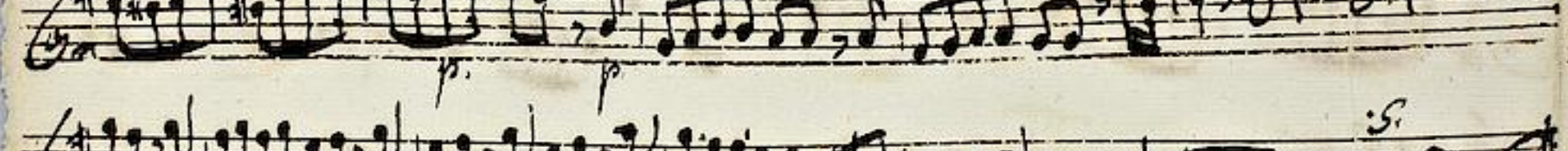


*Aria* 

*Largo*  



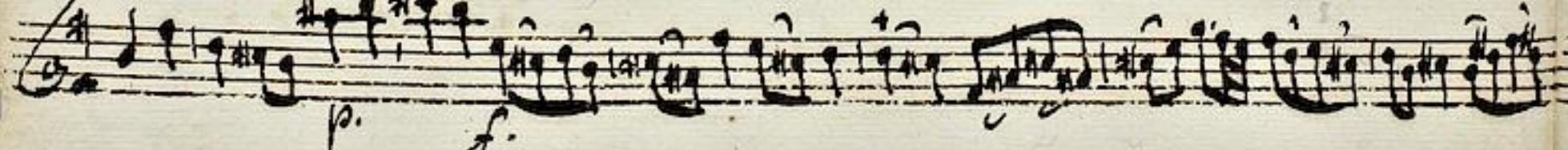




*Gavotte* 







Handwritten musical notation on five staves. The notation includes various note values, rests, and dynamic markings such as *p.* and *f.* The music is written in a single system across the staves.

Musical staff with the word *Menutt* written in a cursive hand. Below the word, there are some markings and the word *alternat.* written in a smaller hand.

Handwritten musical notation on five staves, continuing the piece. The notation features complex rhythmic patterns and melodic lines.

Musical staff with the word *Menutt* written in a cursive hand. Below the word, there are some markings and the number *2.* written in a smaller hand.

Handwritten musical notation on five staves, concluding the piece. The notation includes a double bar line and a decorative flourish consisting of several parallel diagonal lines.

Ouverture.

Hautbois 2<sup>e</sup>.

This image shows a page of handwritten musical notation for the Overture, specifically for the second oboe (Hautbois 2<sup>e</sup>). The score is written on 15 staves. The notation includes various rhythmic values, accidentals, and dynamic markings such as *p.* (piano). The paper is aged and shows some staining. The key signature is one sharp (F#), and the time signature is common time (C). The music features a mix of eighth and sixteenth notes, often beamed together, and some rests. There are also some larger notes and slurs throughout the piece.

Handwritten musical score on ten staves. The notation includes treble clefs, a key signature of one sharp (F#), and a 3/4 time signature. The music features various note values, rests, and dynamic markings such as 'p.' (piano). The score concludes with a double bar line and a fermata-like flourish.

*Source*





*Bourée*

*p. f.*

*p. f.*

*p.*

*p.*

*Andria*  
*Largo*

*p. p. f.*

*p. f.*

*p.*

*p. pp. f.*

*Da Capo*

*Favotte*

*p. f.*

*p. f.*

Handwritten musical notation on two staves. The top staff is in treble clef with a key signature of one sharp (F#) and a 3/4 time signature. It contains a melodic line with various dynamics including *f.* and *p.* The bottom staff is in bass clef with a 3/4 time signature, containing a bass line. The piece concludes with a double bar line and a repeat sign.

*Minuet*  
1. *Da alternat.*

Handwritten musical notation on two staves. The top staff is in treble clef with a key signature of one sharp (F#) and a 3/4 time signature. The bottom staff is in bass clef with a 3/4 time signature. The notation includes a treble line and a bass line.

Handwritten musical notation on a single treble clef staff with a key signature of one sharp (F#) and a 3/4 time signature. It features a melodic line with various note values and rests.

Handwritten musical notation on a single bass clef staff with a key signature of one sharp (F#) and a 3/4 time signature. It features a bass line with various note values and rests.

Handwritten musical notation on a single treble clef staff with a key signature of one sharp (F#) and a 3/4 time signature. It features a melodic line with various note values and rests.

Handwritten musical notation on a single bass clef staff with a key signature of one sharp (F#) and a 3/4 time signature. It features a bass line with various note values and rests.

Handwritten musical notation on a single treble clef staff with a key signature of one sharp (F#) and a 3/4 time signature. It features a melodic line with various note values and rests.

*Minuet*  
2.

Handwritten musical notation on two staves. The top staff is in treble clef with a key signature of one sharp (F#) and a 3/4 time signature. The bottom staff is in bass clef with a 3/4 time signature. The notation includes a treble line and a bass line.

Handwritten musical notation on a single treble clef staff with a key signature of one sharp (F#) and a 3/4 time signature. It features a melodic line with various note values and rests.

Handwritten musical notation on a single bass clef staff with a key signature of one sharp (F#) and a 3/4 time signature. It features a bass line with various note values and rests.

Handwritten musical notation on a single treble clef staff with a key signature of one sharp (F#) and a 3/4 time signature. It features a melodic line with various note values and rests.

Handwritten musical notation on a single bass clef staff with a key signature of one sharp (F#) and a 3/4 time signature. It features a bass line with various note values and rests.

Handwritten musical notation on a single treble clef staff with a key signature of one sharp (F#) and a 3/4 time signature. It features a melodic line with various note values and rests.

Handwritten musical notation on a single bass clef staff with a key signature of one sharp (F#) and a 3/4 time signature. It features a bass line with various note values and rests.

Handwritten musical notation on a single treble clef staff with a key signature of one sharp (F#) and a 3/4 time signature. It features a melodic line with various note values and rests.

Handwritten musical notation on a single bass clef staff with a key signature of one sharp (F#) and a 3/4 time signature. It features a bass line with various note values and rests.

Ouverture.

Violino Iuo.

Handwritten musical score for Violino Iuo. The page contains 15 staves of music in G major, 2/4 time. The notation includes various rhythmic values, accidentals, and performance markings such as 't' (trill) and 'p' (piano). The score concludes with a double bar line and the number '20' in the right margin.

*Arie*

*p.* *f.* *pp.* *f. Cap.*

*Source*

*Bourée*

*p.* *f.*

*p.* *f.*

*f.*

*p.*

*Aria*

*Largo.*

*p.* *f.*

*p.* *p.*

*f.* *Da Capo*

*Gavotte*

*p.*

Handwritten musical notation on five staves. The notation includes various note values, rests, and dynamic markings such as *p.* and *f.*. The paper shows signs of age and wear.

*Meneret*

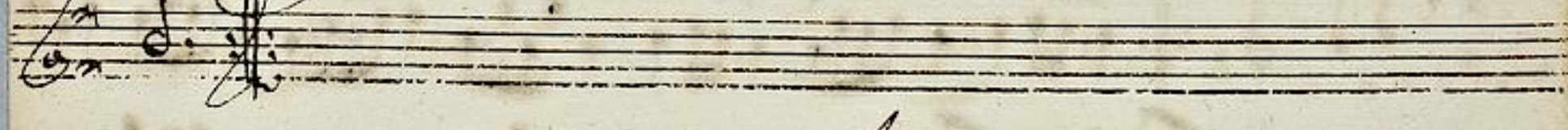
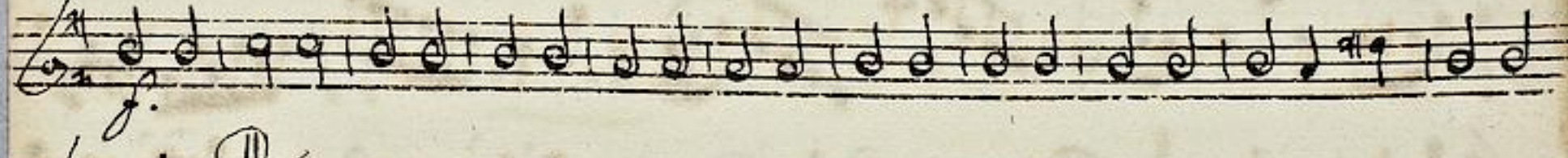
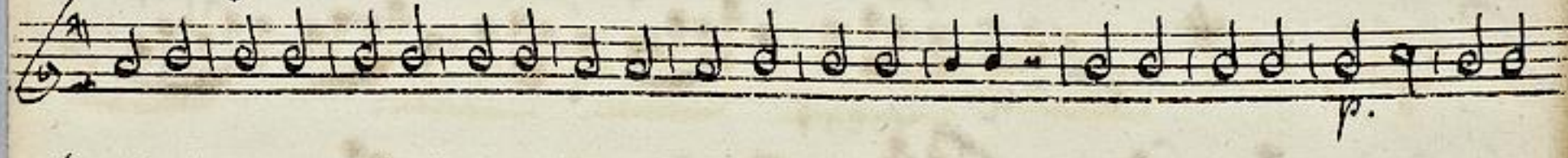
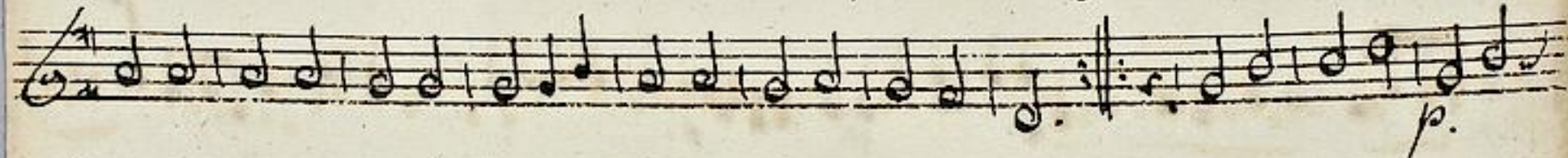
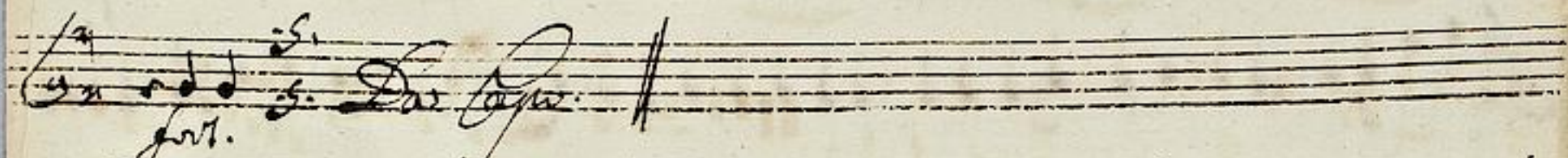
Handwritten musical notation on five staves. The word *Meneret* is written above the first staff, and *alternat.* is written below it. The notation continues with various musical symbols.

Handwritten musical notation on five staves, concluding with a double bar line and a large scribble. The word *Meneret* is written above the second staff, and *buert* is written below it.

Ouverture

Violino 2do.

Handwritten musical score for Violino 2do, titled "Ouverture". The score consists of 14 staves of music in G major, 2/4 time. It features various rhythmic patterns, including eighth and sixteenth notes, and rests. Trill ornaments (t) are marked above several notes. A dynamic marking "p." (piano) is present in the lower right section of the score.





*Air* *Largo*

*Favotte*

*Menuet*

Handwritten musical notation on three staves. The first two staves contain a melodic line with various note values and rests. The third staff begins with a dynamic marking 'p.' and continues with the melody. It concludes with the handwritten text 'Admet' and 'Favet.' followed by a double bar line and a scribbled-out section.

A series of ten empty musical staves on the page, with some faint handwritten notes visible on the left edge of the page.

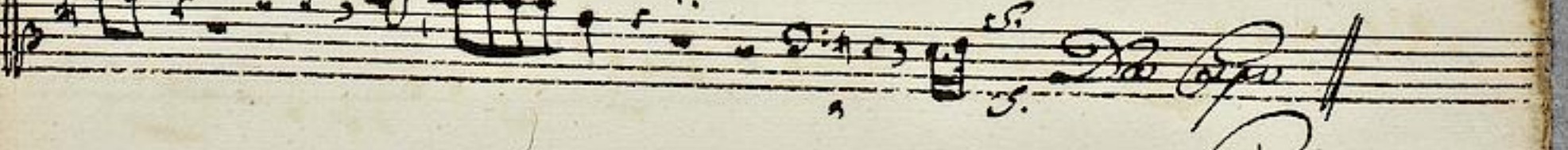
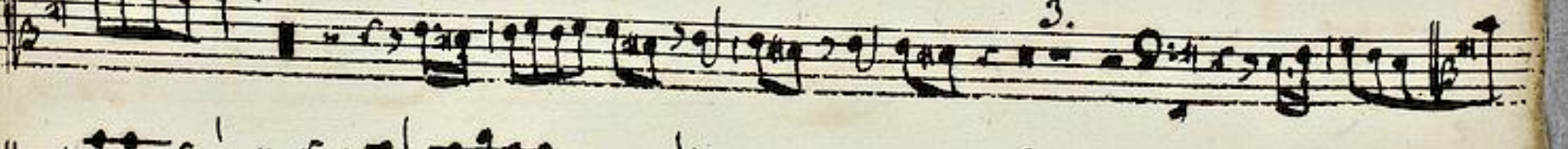
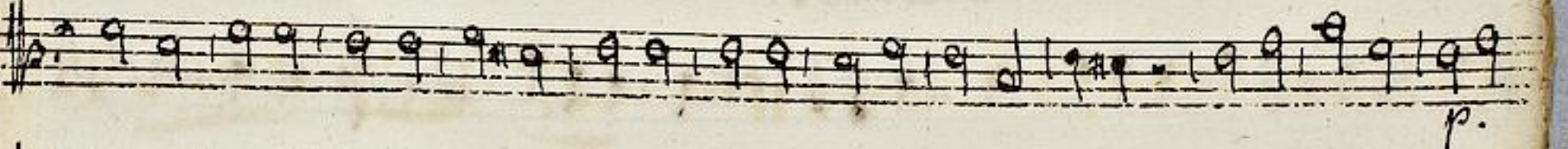
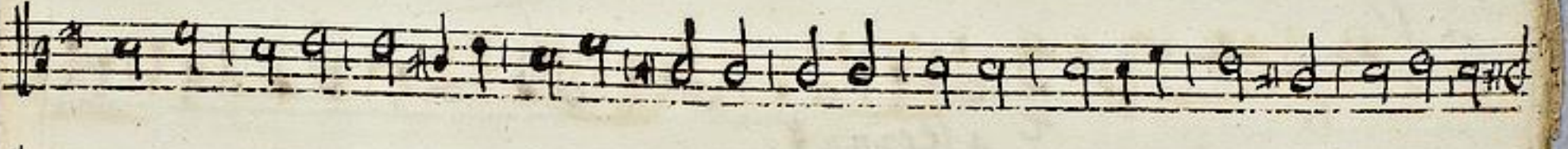
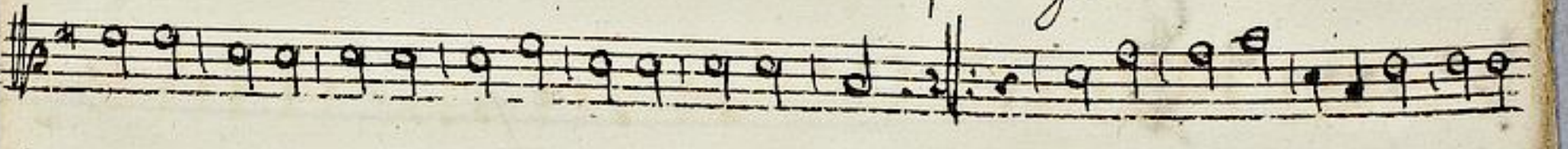
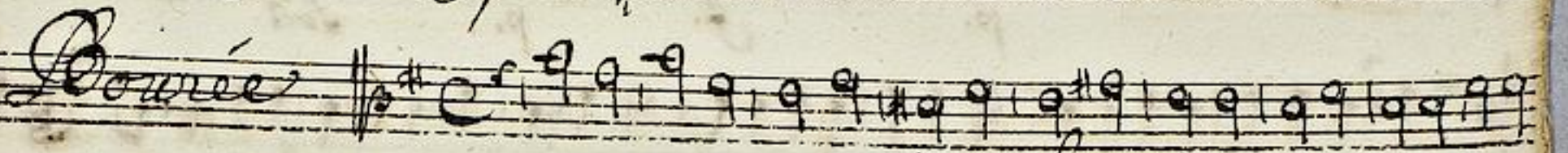
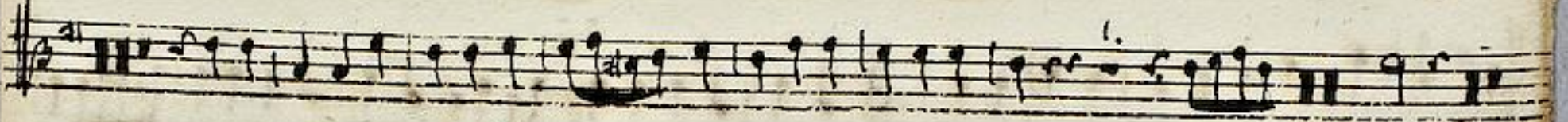


Ouverture.

Viola.

Handwritten musical score for Viola, titled "Ouverture." The score consists of 15 staves of music in G major (one sharp) and 2/4 time. The notation includes various note values, rests, and dynamic markings such as "p" and "f". The paper is aged and shows some staining.





*Gavotte*

Gavotte

Handwritten musical score for Gavotte, consisting of seven staves of music in G major and common time. The notation includes various note values, rests, and dynamic markings.

*p.* *f.* *p.* *fort.*

Mennet

Handwritten musical score for Mennet, consisting of six staves of music in G major and 3/4 time. The notation includes various note values, rests, and a final double bar line with a flourish.

*alternat.*

Mennet  
Gavotte

Overture.

Daslon

A handwritten musical score for an Overture by Daslon, consisting of 15 staves of music. The notation is in a single system, likely for a string ensemble or orchestra. The music is written in a key with one sharp (F#) and a common time signature (C). The score includes various musical notations such as notes, rests, and dynamic markings. Key markings include *p.* (piano), *f.* (forte), and *tutti*. There are also markings for *sol.* (solo) on the 8th and 11th staves. The paper is aged and shows some staining.



*Aria*

*Quarta*

*Aria*

*Aria*

Handwritten musical score for the *Aria* section, consisting of six staves. The notation includes treble clefs, a key signature of one sharp (F#), and a common time signature (C). The first staff begins with a dynamic marking of *f.* and a tempo marking of *Larg.* with a '3' below it. The second staff has a *sol.* marking. The third staff has a *tutti* marking. The fourth staff has a *sol.* marking. The fifth staff has a *tutti* marking. The sixth staff has a *sol.* marking.

*In Cap.*

Handwritten musical score for the *Favotte* section, consisting of six staves. The notation includes treble clefs, a key signature of one sharp (F#), and a common time signature (C). The first staff begins with a *tutti* marking. The second staff has a *p.* marking. The third staff has a *f.* marking. The fourth staff has a *p.* marking. The fifth staff has a *p.* marking. The sixth staff has a *f.* marking.

*Menuet*

Handwritten musical score for the *Menuet* section, consisting of three staves. The notation includes treble clefs, a key signature of one sharp (F#), and a common time signature (C). The first staff begins with a *1.* marking and a tempo marking of *♩ alternat.*



Handwritten musical score on ten staves. The notation includes various note values, rests, and clefs. The word "Menuet" is written in a cursive hand on the fourth staff, with a "2." below it. There are some scribbles and corrections on the staves.

Empty musical staves on the bottom half of the page, showing the five-line structure without any notation.

Overture.

Cembalo.

A handwritten musical score for a cembalo (harpsichord) titled "Overture." The score is written on 15 staves of five-line music paper. The notation includes various rhythmic values, accidentals, and dynamic markings. The first staff begins with a treble clef, a key signature of one sharp (F#), and a common time signature (C). The music is characterized by intricate patterns, including sixteenth-note runs and complex chordal textures. The final staff concludes with the instruction "a tempo" written below the notes. The paper shows signs of age, with some staining and wear at the edges.



Handwritten musical notation on a single staff, featuring a treble clef, a key signature of one sharp (F#), and a common time signature (C). The notation includes various rhythmic values and accidentals.

Handwritten musical notation on a single staff, featuring a treble clef, a key signature of one sharp (F#), and a common time signature (C). The notation includes various rhythmic values and accidentals.

Handwritten musical notation on a single staff, featuring a treble clef, a key signature of one sharp (F#), and a common time signature (C). The word "Air" is written in cursive above the staff.

Handwritten musical notation on a single staff, featuring a treble clef, a key signature of one sharp (F#), and a common time signature (C). The notation includes various rhythmic values and accidentals.

Handwritten musical notation on a single staff, featuring a treble clef, a key signature of one sharp (F#), and a common time signature (C). The notation includes various rhythmic values and accidentals.

Handwritten musical notation on a single staff, featuring a treble clef, a key signature of one sharp (F#), and a common time signature (C). The word "Bourée" is written in cursive above the staff.

Handwritten musical notation on a single staff, featuring a treble clef, a key signature of one sharp (F#), and a common time signature (C). The notation includes various rhythmic values and accidentals.

Handwritten musical notation on a single staff, featuring a treble clef, a key signature of one sharp (F#), and a common time signature (C). The notation includes various rhythmic values and accidentals.

Handwritten musical notation on a single staff, featuring a treble clef, a key signature of one sharp (F#), and a common time signature (C). The notation includes various rhythmic values and accidentals.

Handwritten musical notation on a single staff, featuring a treble clef, a key signature of one sharp (F#), and a common time signature (C). The notation includes various rhythmic values and accidentals.

Handwritten musical notation on a single staff, featuring a treble clef, a key signature of one sharp (F#), and a common time signature (C). The notation includes various rhythmic values and accidentals.

Handwritten musical notation on a single staff, featuring a treble clef, a key signature of one sharp (F#), and a common time signature (C). The word "Aria" is written in cursive above the staff.

Handwritten musical notation on a single staff, featuring a treble clef, a key signature of one sharp (F#), and a common time signature (C). The notation includes various rhythmic values and accidentals.

Handwritten musical notation on a single staff, featuring a treble clef, a key signature of one sharp (F#), and a common time signature (C). The notation includes various rhythmic values and accidentals.

Handwritten musical notation on a single staff, featuring a treble clef, a key signature of one sharp (F#), and a common time signature (C). The notation includes various rhythmic values and accidentals.

*Favotte*

Favotte

Handwritten musical score for 'Favotte' in C major, 3/4 time. The score consists of six staves. The first staff begins with a treble clef, a key signature of one sharp (F#), and a common time signature (C). The music is written in a single melodic line. Dynamic markings include *p.* (piano) and *f.* (forte). The piece concludes with a double bar line and a decorative flourish.

Menuet

2. Alternat.

Handwritten musical score for 'Menuet' in C major, 3/4 time. The score consists of six staves. The first staff begins with a treble clef, a key signature of one sharp (F#), and a common time signature (C). The music is written in a single melodic line. The second staff has the annotation '2. Alternat.' written below it. The piece concludes with a double bar line, the word 'Menuet' written above the staff, and 'facit' written below the staff, followed by a decorative flourish.