

Cela sans plus

Josquin des Prez

[Cantus]

Tenor

Contra

2
30

System 1 (measures 30-35): Treble clef, bass clef, and a third staff. Measure 30 starts with a treble clef and a key signature of one flat. The music features a melodic line in the treble and a bass line in the bass clef. A double bar line with repeat dots appears at the end of measure 35.

36

System 2 (measures 36-40): Treble clef, bass clef, and a third staff. Measure 36 starts with a treble clef and a key signature of one flat. The music continues with melodic and bass lines. A double bar line with repeat dots appears at the end of measure 40.

41

System 3 (measures 41-45): Treble clef, bass clef, and a third staff. Measure 41 starts with a treble clef and a key signature of one flat. The music continues with melodic and bass lines. A double bar line with repeat dots appears at the end of measure 45.

46

System 4 (measures 46-50): Treble clef, bass clef, and a third staff. Measure 46 starts with a treble clef and a key signature of one flat. The music continues with melodic and bass lines. A double bar line with repeat dots appears at the end of measure 50.

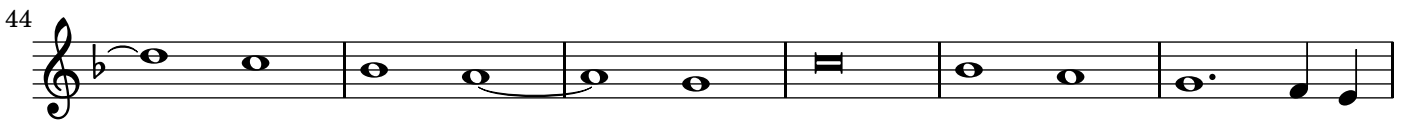
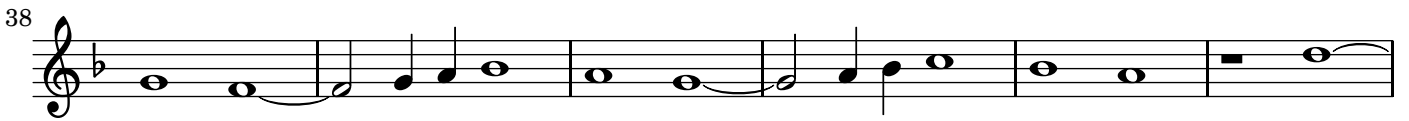
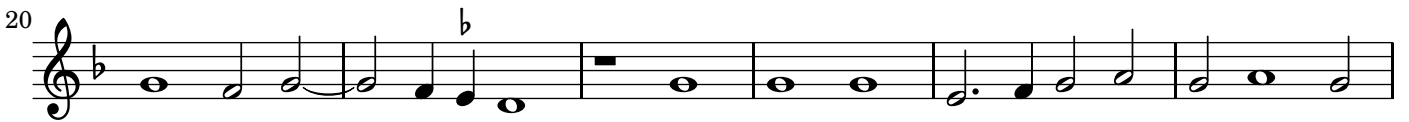
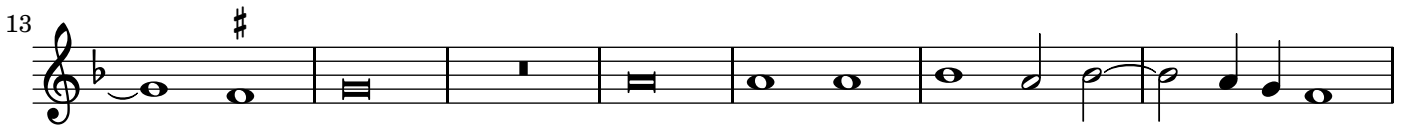
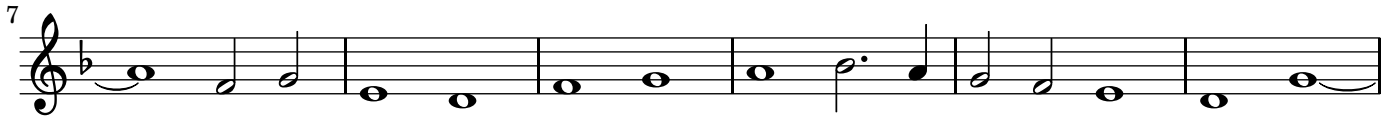
51

System 5 (measures 51-55): Treble clef, bass clef, and a third staff. Measure 51 starts with a treble clef and a key signature of one flat. The music continues with melodic and bass lines. A double bar line with repeat dots appears at the end of measure 55.

Cela sans plus

1 Cantus

Josquin des Prez



Cela sans plus

2 Tenor

Josquin des Prez

2

8

14

21

26

32

41

50

The image displays a musical score for the tenor part of 'Cela sans plus' by Josquin des Prez. The score is written in bass clef with a key signature of one flat (B-flat) and a common time signature (C). It consists of eight staves of music, each beginning with a measure number: 2, 8, 14, 21, 26, 32, 41, and 50. The notation includes various note values (quarter, eighth, and sixteenth notes), rests, and accidentals. A fermata is present over the final note of the eighth staff. The score concludes with a double bar line at the end of the final staff.

Cela sans plus

2 Tenor

Josquin des Prez

Musical score for the Tenor part of 'Cela sans plus' by Josquin des Prez. The score is written in G major (one sharp) and 4/4 time. It consists of nine staves of music, with measure numbers 2, 8, 14, 21, 26, 32, 41, and 50 indicated at the beginning of each staff. The notation includes various note values (quarter, eighth, and sixteenth notes), rests, and accidentals (sharps and flats). A fermata is present over the final measure of the piece.

Cela sans plus

3 Contra

Josquin des Prez

4

10

17

22

28

35

40

45

50

Cela sans plus

3 Contra

Josquin des Prez

4

10

17

22

28

35

40

45

50