

Tomaso Albinoni (1671-1750)
Oboe Concerto in C Major (Opus 7, No. 12)
For Solo Oboe, Strings and Basso continuo

Oboe solo arrangement

Arranged by Don Werdick
www.oboemn.com/ensemble
www.oboemn.com



Oboe

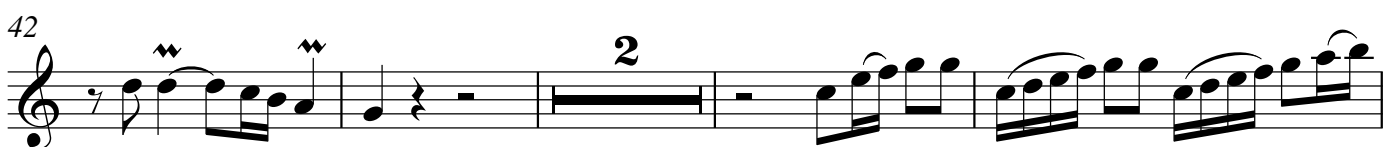
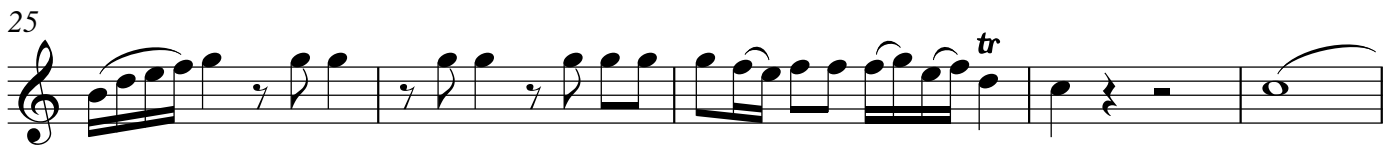
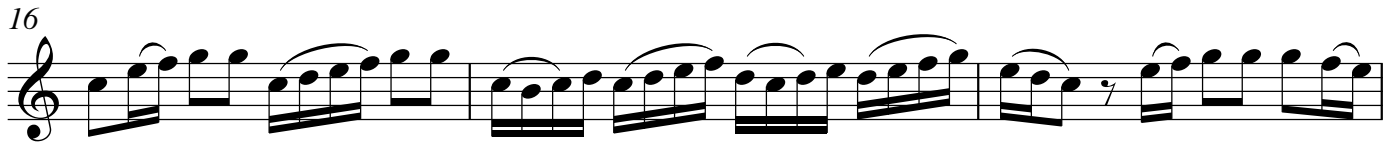
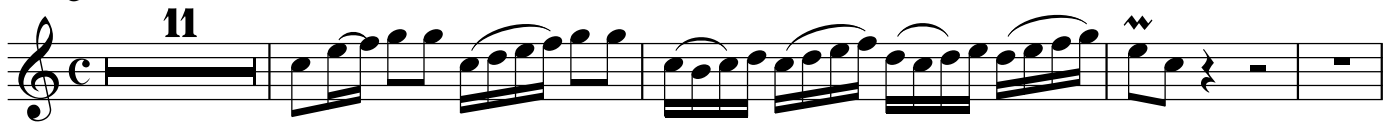
Oboe Concerto in C Major Opus 7, No. 12

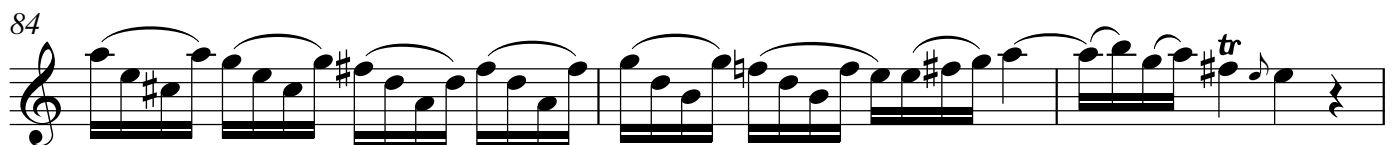
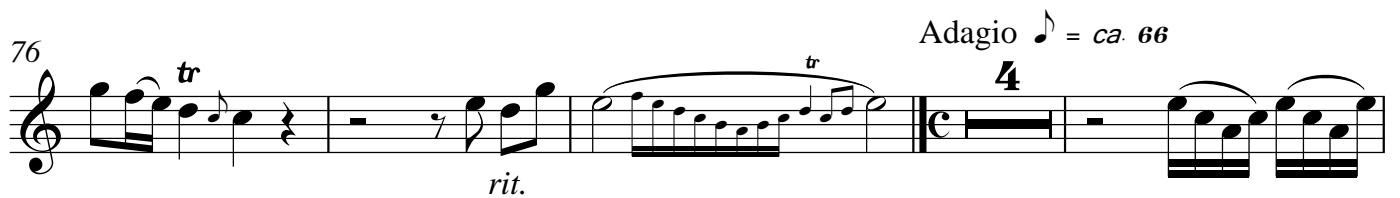
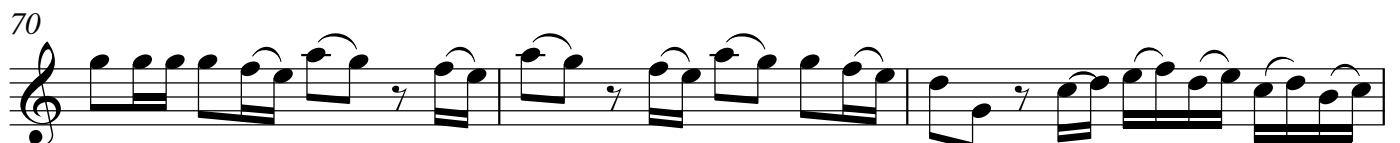
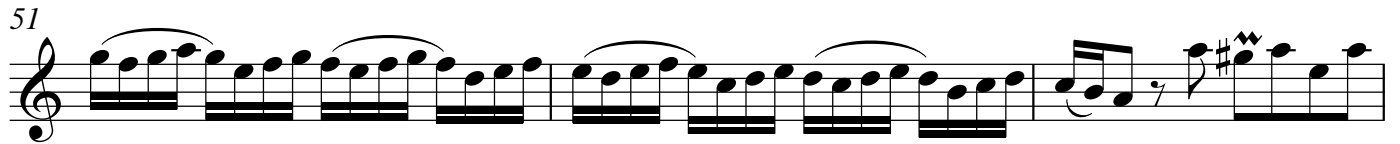
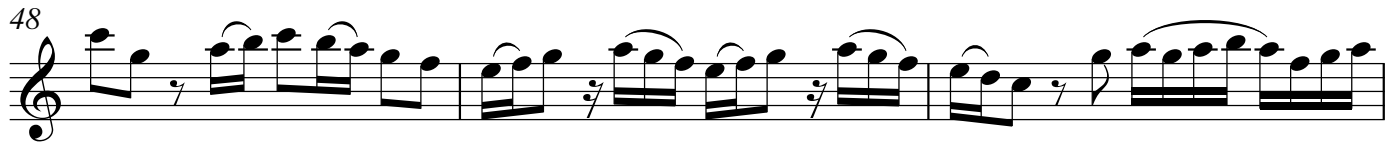
for Oboe Solo, Strings and Basso continuo

Tomaso Albinoni (1671-1750)

Arr. Don Werdick (1946 -)

Allegro ♩ = ca. 88





90

93

96 *tr* , Allegro ♩ = ca. 72

104 **12**

125

133

143 **7**

156

165

172 *tr* **6**

